



2024 PROJECT REPORT

By: Antonio Rodriguez, PE, LGPP & Melisa Montemayor, LGPP

**WC-CL RMA General Engineering Consultant (GEC) Deputy Program Manager and Program Manager
December 23, 2024**

Background

The Webb County City of Laredo Regional Mobility Authority (WC-CL RMA) was formally petitioned jointly by Webb County and the City of Laredo to the Texas Transportation Commission for its formation on April 15, 2013 (City of Laredo) and August 18, 2013 (Webb County). The Texas Transportation Commission approved the creation of the WC-CL RMA on February 27, 2014.

The WC-CL RMA is unique in Texas as it is the only RMA that was jointly formed by both a City and a County. The WC-CL RMA Board of Directors consists of nine (9) members. Four members of the Board of Directors are jointly selected by City Council Districts 1 and 2, Districts 3 and 4, District 5 and 6 and Districts 7 and 8. Four members of the Board of Directors are individually selected by members of Commissioners Court from each of the four precincts. The ninth member is the Chair of the Board of Directors who is directly appointed by the Governor of the State of Texas. Each Director serves as a volunteer and is not compensated for any of his or her time spent in service on the Board of Directors. Furthermore, no Director can have any financial interest that would benefit from the actions of the WC-CL RMA.

Since its formation, the WC-CL RMA Board was entrusted to organize the agency which entailed hiring consultants, developing policy, holding meetings, and filing regulatory annual and periodic reports, including the annual audit. In the last five years the WC-CL RMA has become involved in roadway construction projects throughout the community along with roadway studies and reports. The progress of those projects and future projects will be described later in this report.

The single revenue source for the WC-CL RMA is from the \$10 fee per vehicle registered in Webb County which was approved by the 83rd Texas Legislature to fund long-term transportation projects of a regional mobility authority. With these monies, the WC-CL RMA has been able to perform its role in developing solutions for helping to advance mobility priorities for Webb County and the City of Laredo. It should be noted that, at this time, the WC-CL RMA does not have any paid employees or facilities from which to conduct its business; however, it does have operating expenses. It is anticipated that a Project Coordinator position will be filled as a paid employee of the WC-CL RMA in the coming years. TxDOT and other entities such as IBC Bank have provided their facilities and resources for WC-CL RMA Board meetings.



According to the financial summary reported to the Board of Directors at the November 2024 meeting, the WC-CL RMA has an asset balance of \$13,458,913.76. The WC-CL RMA also has been granted \$8.89 million of Category 12 – Strategic Partnership funds from TxDOT that is dedicated specifically for the construction of roadway projects.

The members of the Board of Directors are the following:

1. Chairman of the Board of Directors – Mr. Jed A. Brown
2. County Precinct No. 1 Director – Mr. Tony Arce, Jr.
3. County Precinct No. 2 Director – Mr. Oscar O. Lopez, Treasurer
4. County Precinct No. 3 Director – Mr. David Garcia
5. County Precinct No. 4 Director – Ms. Diana Palacios
6. City District 1 & 2 Director – Mr. Jose Murillo
7. City District 3 & 4 Director – Mr. Alfonso Mendiola
8. City District 5 & 6 Director – Mr. Douglas B. Howland, Vice Chair
9. City District 7 & 8 Director – Mr. Arturo Dominguez, Secretary



2024 Members of the Board: Top row, (L-R): Oscar Lopez, Diana Palacios, Doug Howland, Alfonso Mendiola, and David Garcia; Bottom row, (L-R): Jose Murillo, Arturo Dominguez, Jed Brown, and Tony Arce.



WC-CL RMA Projects:

- I. **Primary Project - Vallecillo Road, from FM 1472 to the IH-35 Southbound Frontage Road (February 2015 to Present)** - The development phase of the project is well underway. The complexities of the partnership are finalized and as the project sponsor the RMA has formalized contractual relationships with various entities:
 - a. Executed funding agreement with the Killam Company on March 4, 2024
 - b. Amend its Interlocal Agreement with the City of Laredo. In turn, the City of Laredo is developing the ROW agreement with the Killam Company.
 - i. Amendment is to define roles and responsibilities for construction of the project. The RMA will be advertising and constructing the project, thereby will require access to the City of Laredo ROW to commence the work. The Amendment is currently under development.
 - c. Executed Advanced Funding Agreement (AFA) with TxDOT Laredo District on 4/14/2023
 - i. Amend the AFA from TxDOT to account for the updated project funding and revise the use of federal funding for preliminary engineering in addition to construction. The amendment to the AFA was approved on 10/18/2024. The Federal Project Authorization and Agreement (FPAA) from the Laredo District is forthcoming; this will allow the RMA to commence reimbursement requests for the schematic, environmental and PS&E development of the project.

The City of Laredo has informed the RMA that they would not proceed with advanced ROW acquisition for the project; thus, requiring environmental clearance completion prior to finalizing the ROW donation from the Killam Company. The RMA supports the City's decision and will not mobilize utilities to relocate their facilities into the new ROW until the ROW is in possession by the City of Laredo.

- Once environmental clearance is complete, the City of Laredo will proceed with ROW acquisition in coordination with the Killam Company. This process is estimated to be complete by the Fall of 2025.
- Upon completion, the new ROW will need to be cleared for the relocation of the existing utilities at the intersections of IH 35 and FM 1472 to the new ROW limits. ROW clearing and grubbing is estimated to last approximately 3 months.
- Standard utility construction relocation duration is nominally 12 months. Construction for utility relocation is estimated to commence in early 2026 with completion estimated by late 2026.
- Upon completion of utility relocation, the RMA will submit the request for the State Letter of Authority (SLOA) and FPAA to begin the bid advertisement process. The anticipated duration between the request for the SLOA and receipt of the request is 3 months. Bid advertisement and letting is anticipated for the Spring of 2027.
- The 60% PS&E submittal to the TxDOT Laredo District is anticipated for January 2025.



- The 100% PS&E submittal to the TxDOT Laredo District is anticipated for May 2025.
- Construction is anticipated to commence in the Summer of 2027 with completion anticipated for late 2028.

Background/History of the Project:

The Laredo MPO Policy Committee requested that the RMA develop this new location roadway in early 2015, to assist in alleviating congestion on FM 1472. Improvements will consist of the installation of a 5-lane roadway with curb, sidewalk, and utilities for a total length of 2.85 miles. The project limits begin at the eastside of the intersection FM 1472 and Muller Memorial Blvd. and will extend approximately 2.85 miles to the East and terminate at the southbound frontage road of IH 35. WC-CL RMA passed **Resolution 20-16** to participate in the development of the project on August 28, 2020.

The implementation of this project will provide an alternate route for traffic from the World Trade Bridge area to IH 35 which will improve congestion along the currently, highly congested FM 1472. The implementation of this project will also provide a direct egress route for those living in the La Bota Ranch Subdivision and others in residential areas north of Muller Memorial Blvd. This roadway and infrastructure complementing its connection to IH 35 also opens prime property for industrial development and leads to possible future developments east of IH 35.

As the lead agency on the project and to develop an understanding of the cost and scope of it, the WC-CL RMA conducted preliminary environmental studies, as well as the development of a preliminary geometric schematic of the project. The WC-CL RMA also implemented and completed both traffic and geotechnical studies in 2020. The **total project cost** (including the value of the donated ROW which is roughly \$10 million) for the implementation of Vallecillo Road is **\$50,655,522.00**. The current **total construction cost** of the project, without utilities, is **\$33,804,300.44**.

The WC-CL RMA investigated multiple avenues to generate capital for the implementation of the project through local, state, and federal sources and was successful in attaining full project funding. Project partnership with dedicated financial and right of way resources have advanced to a critical point, with investment from the WC-CL RMA through Category 12 funds and Vehicle Registration Fees, City of Laredo, Killam Company including the donation of land, Category 7 funds through the LWCAMPO and a federal appropriations earmark made possible by Congressman Henry Cuellar through the U.S. Department of Housing and Urban Development Community Project Funding program for a total amount of \$54,331,252.00 dedicated to the road project.



Project Cost and Funding Breakdown 2024		
Project Components		Cost
Engineering (WC-CL RMA) (Schematic, Environmental, PS&E & CEI)		\$5,258,432
Right-of-Way (Killam Company)		\$10,000,000
Construction		\$33,804,300
Utilities		\$3,643,331
Total Project Cost		\$52,706,063
Public/Private Partnership Project		Funding
Webb County-City of Laredo Regional Mobility Authority	15.1%	\$8,182,693
*City of Laredo (Construction and Utility)	15.9%	\$8,643,331
**Killam Company (including Right-of-Way)	30.7%	\$16,692,636
***Category 10 Federal Community Project Funds	5.5%	\$3,000,000
***Category 7 LWCAMPO Project Funds	32.8%	\$17,812,592
****Vallecillo Funding Partnership	100%	\$54,331,252

- *Funds includes \$5M dollar commitment to road construction and estimated water/sewer utility cost.
- ** ROW is expected to be clean without any structures, easements, or liens in the donation.
- *** Funding requires Local Match (20% for Category 10 and 8.2% for Category 7 funds).
- **** Partnership funding includes \$2,060,633 Local Match of Category 7 & Category 10 Funding.

These commitments have been codified via an Inter-Local Agreement between the WC-CL RMA and the City of Laredo, executed on September 18, 2020 (**Resolution 20-17**). It has also been codified via a Memorandum of Understanding between the WC-CL RMA and the Killam Company, executed on October 2, 2020 (**Resolution 20-18**).

The private-public team approached members of the Texas Transportation Commission to request the remaining balance in the funding gap which equated to 42.6% of the total project cost in financial assistance from TxDOT to finalize the funding plan for the project and ultimately take over Vallecillo Road and as on-system State roadway. During these efforts, United States (US) Congressman Henry Cuellar committed \$3,000,000 to the project which reduced the request to the State of Texas. With support from US Congressman Cuellar, State Senator Judith Zaffirini, State Representative Richard Raymond, State Representative Tracy King, and former Laredo Mayor Pete Saenz, Chairman Brown led a series of delegations to Austin, TX. The first meeting with Transportation Commissioner Alvin New took place on June 22, 2022. A follow up meeting with TxDOT Executive Director Marc Williams occurred in early August 2022. In both in-person meetings

Project Report

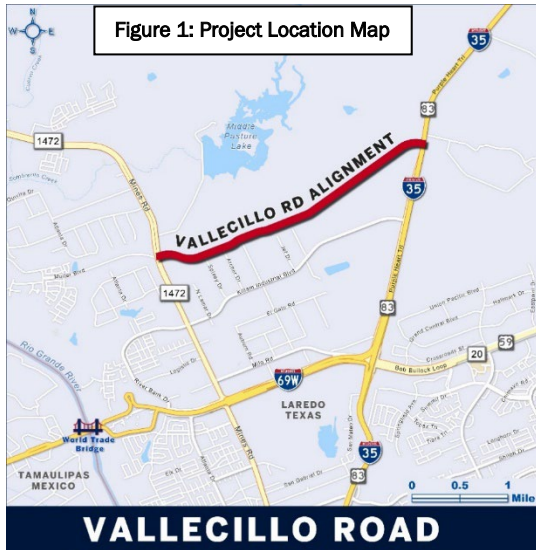
Webb County - City of Laredo
Regional Mobility Authority

2024

www.webblaredorma.org



TxDOT was presented details of the project along with a request for assistance to resolve the funding gap in the 2022 Unified Transportation Plan (UTP).



Initially, funding for the project was not included in the draft UTP, but after extensive meetings and negotiations, Vallecillo made the final UTP with a local commitment to construct the roadway and a TxDOT leadership and Transportation Commission commitment to construct a future overpass that would cross the IH 35 Corridor to allow for the continuation of Vallecillo Road to the East to ultimately reach US 59. With this commitment, the Laredo, and Webb County Metropolitan Planning Organization (MPO) passed a resolution to advance \$16,500,000 in Category 7 funds to the project which effectively resolved the funding gap. The LWCAMPO later appropriated an additional \$1,312,592 million dollars in Category 7 funding to provide for the construction and made the appropriate revisions to the 2020-2045 MTP.

Moving forward, as the project sponsor, the WC-CL RMA executed an Advanced Funding Agreement with TxDOT for the use of the Category 7 funds from the MPO and the use of part of the \$8.89 million of Category 12 – Strategic Partnership funds.



II. Vallecillo Overpass (ongoing) – While the WC-CL RMA will not be managing the development of the Overpass design, the RMA stands ready to provide information from the Vallecillo Road Project to TxDOT so that the two projects’ connections are well coordinated. TxDOT Laredo District indicated that they will be developing the design of this project. The WC-CL RMA received the *.dgn files and traffic data from TxDOT to incorporate into the Vallecillo Road traffic studies, and the WC-CL RMA has prepared a construction estimate for the proposed Overpass. \$16 million has been provided by the MPO via Category 2 funds towards the cost of the overpass. The image below indicates the *Interchange at Vallecillo Road – Laredo* project has been included in the proposed 2025 UTP slated for adoption in August 2025. Local stakeholder meetings are on-going and include the WC-CL RMA, State Representative Richard Raymond Peña, Rolando Ortiz (Killam Company) hosted by the TxDOT Laredo District and their staff District Engineer Epi Gonzalez, TP&D Director Roberto Rodriguez, and PM Ana Duncan to coordinate and receive updates on the progress of the schematic design for the project.

WEBB COUNTY										
2	IH 35	Replace Bridge at Uniroyal Drive - Laredo 0018-05-089	0.47 MI S of Uniroyal Interchange	3.22 MI N of Uniroyal Interchange	FY 2025-2028	\$254,133,312	Funding Adjustment	No	Cat. 4 Urban \$37,000,000 Cat. 12 Strategic Priority \$217,133,312 TOTAL \$254,133,312 Cat. 4U added \$37.0M and Cat. 12 increased \$116.2M	1
3a	IH 35	Widen Freeway - Laredo (North) 0018-05-094	2.68 MI N of Uniroyal Int (MM 16.0)	1.2 MI N of US 83 Int (MM 19.787)	FY 2025-2028	\$270,752,005	Funding Adjustment	No	Cat. 4 Rural \$232,285,932 Cat. 12 Strategic Priority \$38,466,073 TOTAL \$270,752,005 Cat. 4R increased \$65.0M	1
3b	US 83	Widen Non-Freeway - Webb County 0037-10-041	Los Botines Lane	US 83 / IH 35 Underpass	FY 2025-2028	\$37,282,139	Funding Adjustment	No	Cat. 4 Rural \$11,672,944 Cat. 12 Strategic Priority \$25,609,195 TOTAL \$37,282,139 Cat. 4R added \$11.7M	2
4	IH 35	Interchange at US 59 - Laredo 0018-06-185	0.50 MI East of IH 35	0.50 MI North of US 59	FY 2025-2028	\$113,505,334	Funding Adjustment	No	Cat. 11 Border \$20,000,000 Cat. 12 Strategic Priority \$93,505,334 TOTAL \$113,505,334 Cat. 12 increased \$52.0M	1
5	IH 35	Interchange at Vallecillo Road - Laredo 0018-06-218	0.50 MI North of Vallecillo Road	0.50 MI South of Vallecillo Road	FY 2029-2034	\$72,800,000	New Authorization	No	Cat. 2 Metro/Urban Corridor \$16,000,000 --Remaining funding TBD-- \$56,800,000 TOTAL \$72,800,000	1
6	US 83	Widen Non-Freeway - Laredo 0037-10-040	1 MI North of SH 255	Los Botines Lane	FY 2025-2028	\$50,400,000	No Funding Change	No	Cat. 4 Rural \$50,400,000 TOTAL \$50,400,000	1
7a	US 59	Upgrade to Freeway - Laredo Airport 0086-14-077	0.50 MI South of E Corridor Road (Airport)	0.50 MI North of E Corridor Road (Airport)	FY 2025-2028	\$37,329,691	Funding Adjustment	No	Cat. 2 Metro/Urban Corridor \$9,999 Cat. 12 Strategic Priority \$37,319,692 TOTAL \$37,329,691 Cat. 12 increased \$13.7M	1

Excerpt of proposed projects in the 2025 UTP listing for Webb County, specifically Vallecillo Road Interchange at IH 35

Project Report

Webb County - City of Laredo
Regional Mobility Authority

2024

www.webblaredorma.org



III. FHWA Safe Streets and Roads for All (SS4A) Vision Zero Webb Laredo Safety Action Plan

Development (August 2023 to Present) – In partnership with the LWCAMPO and the City of Laredo, the WC-CL RMA developed a \$2M grant application to develop a safety action plan to prevent roadway deaths and serious injuries. The total cost for the development of the grant application was \$25,318. The cost of the application was equally shared between the City of Laredo and the WC-CL RMA with each partner committing to pay \$12,659 to cover the cost of the application. The WC-CL RMA committed to developing, sponsoring, and submitting the grant application on July 20, 2022 (**Resolution 22-19**).

On January 30, 2023, the WC-CL RMA was informed by US Congressman Henry Cuellar’s Office that the grant was approved for \$1.6M in federal funds, with a \$400,000 local match requirement, for a total of \$2M. A formal announcement by Congressman Cuellar was held at City Hall on February 21, 2023. The WC-CL RMA submitted the draft Grant Agreement to the Federal Highway Administration (FHWA), and it was executed on August 3, 2023. The WC-CL RMA and the City of Laredo executed an Interlocal Agreement for the sharing of the local funding match for the grant on September 7, 2023.



The intent of the grant is to establish a comprehensive safety action plan with the goal of developing a holistic, well-defined strategy to prevent roadway fatalities and serious injuries within Webb County, Texas. The Safety Action Plan will expand upon previous plans, new research, and public input to develop a plan that:

- Promotes safety
- Employs low-cost, high-impact strategies that can improve safety
- Ensures equitable investment in an underserved community
- Incorporates evidence-based safety countermeasures into projects and strategies; and
- Aligns with United States Department of Transportation’s (USDOT) mission and priorities.

Work on the Safety Action Plan began in September 2023. The RMA Board, along with Laredo City Council and the Laredo Webb County Area MPO Policy Board adopted a pledge to reach zero fatalities and serious injuries on Laredo and Webb County roadways by 2040 in February and March of 2024 as part of this effort. A Public Interactive Information Session and Stakeholder Workshop, with multiple public agency staff, stakeholders, and members of the LWCAMPO Active Transportation Committee were held in April 2024. The project team has been present at several other public engagement events put on by others and has been working to build a list of Safety enhancements to be made



throughout the community and a list of actions to be taken toward that official goal to reach Zero fatalities and serious injuries by 2040.

The Safety Action Plan development timeline is on track with the first complete draft anticipated for December 2024. The plan will consist of digital and hard copy deliverable products including:

- A. Digital Data Dashboard residing within Vision Zero Webb Laredo Website
- B. Executive Summary
- C. Safety Action Plan Overview
- D. Safety Action Tables
- E. Capital Project Corridor Profiles
- F. Funding Overview
- G. Setting Benchmarks and Measuring Progress
- H. Report appendices featuring:
 - i. Plan and Policy Review Report
 - ii. Laredo/Webb County Systemic Safety Analysis
 - iii. Equity Priority Analysis
 - iv. Capital Plan
 - v. Safety Action List
 - vi. Financial Analysis
 - vii. Public and Stakeholder Engagement Report

The Safety Action Plan will outline 10 Priority Corridors, each with a series of safety improvements recommended, along with various Actions, Policies, and areas of additional study. These added studies could include but are not limited to a Bike Network Plan, Complete Streets Policy, and Safe Routes to School Program, for example. Capital Projects associated with the 10 Priority Corridors will have planning-level cost estimates associated with them and potential funding sources for each.

These project reports were assembled through the efforts of the following project consultant team:

- LJA Engineering
- Toole Design Group
- Cambridge Systematics
- Able City
- Liquid Studio Group



Upon final submittal of the Safety Action Plan to the RMA it is expected that other partner agencies will move forward with institutional adoption in February and March 2025.

Once the Safety Action Plan has been completed and adopted by the City of Laredo and Laredo Webb County Area MPO, they will each respectively be eligible for FHWA Safe Streets and Roads for All Implementation Grant Funds. Grant applications for the next round of these funds are expected to be out in Spring of 2025. As the Capital Plan continues to materialize, the specific projects to be included in the Grant Application will be identified along with a total Federal funding request, that will require a 20% Local Match. Working through the project consultant team, the RMA will prepare the grant application in line with the grant requirements and the Safety Action Plan. This will be done on behalf of and in partnership with the Grant Applicant who will be providing the local match and building the projects.



Vision Zero Webb Laredo Kickoff Media Event in downtown Laredo, February 29, 2024



Mayoral Proclamation at Laredo City Hall: October as Walktober, Pedestrian Safety Month, October 28, 2024

Project Report

Webb County - City of Laredo
Regional Mobility Authority

2024

www.webblaredorma.org



IV. North Laredo Area Transportation Reinvestment Zone (TRZ) Study (August 2023 to Present) – The City of Laredo City Council has asked the WC-CL RMA to work in partnership to perform a TRZ Study in the North Laredo Area. The actual limits and the possible alignment of the TRZ have not been established and is still under discussion with the City of Laredo. The WC-CL RMA board approved **Resolution 23-09** on August 1, 2023, to negotiate and enter into an interlocal agreement (ILA) with the City of Laredo and has committed to funding up to 50% of the study cost. The City of Laredo and the WC-CL RMA are developing an Interlocal Agreement to codify the share of the funding cost for the development of the Study. The RMA recommitted its support in funding on the project February 14, 2024, at the February Board Meeting. On November 6, 2024, the WC-CL RMA Board of Directors passed a resolution to sign the ILA between the City and the WC-CL RMA for this project. It is anticipated that the RMA and City of Laredo will soon enter into an Interlocal Agreement to move forward the North Laredo TRZ Study.

V. Cuatro Vientos / Loop 20 Transportation Reinvestment Zone (TRZ) Study (Completed) & Implementation (Ongoing) – Regarding the Loop 20 South, also known as the Cuatro Vientos TRZ, the City would like to commence the process of implementing it with support from the WC-CL RMA. On November 6, 2024, the WC-CL RMA Board of Directors passed a resolution to sign the ILA for the creation of the Cuatro Vientos /Loop 20 TRZ between the City and the WC-CL RMA.

Background/ History:

In 2018, the WC-CL RMA commissioned its GEC to perform a TRZ Study for the advancement of Loop 20 South from US 59 to US 83 to upgrade the existing rural divided facility to a controlled access freeway facility with a direct connection to the future Port of Entry, International Bridge 5. The study was conducted in partnership with the GEC’s consultant team, TXP.

The 2018 study was a follow-up to City Council action taken on 9/18/2017. City Council requested that the WC-CL RMA perform a 2-mile wide TRZ study along Loop 20 South that would extend from US 59 to the Rio Grande. The study focused on the performance of a possible 2-mile wide TRZ. The Study was completed in the Summer of 2018 and presented to the Laredo and Webb County MPO. Upon final concurrence by the City of Laredo, the WC-CL RMA will work with the City of Laredo to develop a defined zone for Loop 20 South from US 59 to proposed International Bridge 4/5. The next steps for the study were the following:

- Refine the TRZ boundary to exclude existing developed properties in the north and northwestern portion of the study area.
- Consider extending the TRZ boundary east along State Highway 359 to take advantage of pending projects that would access and utilize Loop 20 improvements.
- Collaborate with landowners on annexation within the study area to capture the increment from new development prior to construction beginning.



- Recalculate the TRZ increment value based on the above and move forward with implementation

The WC-CL RMA was approached by the City of Laredo in late 2021 to partner and update the TRZ study for the Cuatro Vientos corridor from Hwy 59 south to the proposed bridge 4/5 location. To respond to the request, the WC-CL RMA hosted a TRZ workshop on December 17, 2021, with attendance from Mayor Pete Saenz, Laredo, and Webb County Area MPO Executive Director Juan Mendive and the City of Laredo Economic Development Director Teclo Garcia to strategize the update of the 2018 Loop 20 South TRZ Study and determine next steps. In May 2022, the WC-CL RMA commenced work on the update of the 2018 TRZ Study for Cuatro Vientos from US 59 to the proposed International Bridge 4/5. The 2022 Study was a joint venture with the City of Laredo.

The 2022 Study accounted for the following changes that occurred from the 2018 Study:

- Due to 2022 State Legislation, Counties are now able to enact TRZs.
- Tax rates have declined as property values have increased
- Home prices in Study Area have increased substantially
 - 2017 = \$125,000
 - 2022 = \$200,000
- New master planned developments along Loop 20 will continue to increase traffic.
- The increase in interest rates could dampen demand over the subsequent years; thus, impacting the revenue projection.

The Study projects a revenue forecast that ranges from \$131.8 million and \$354.7 million in nominal incremental tax revenue assuming a 50 percent allocation to the TRZ.

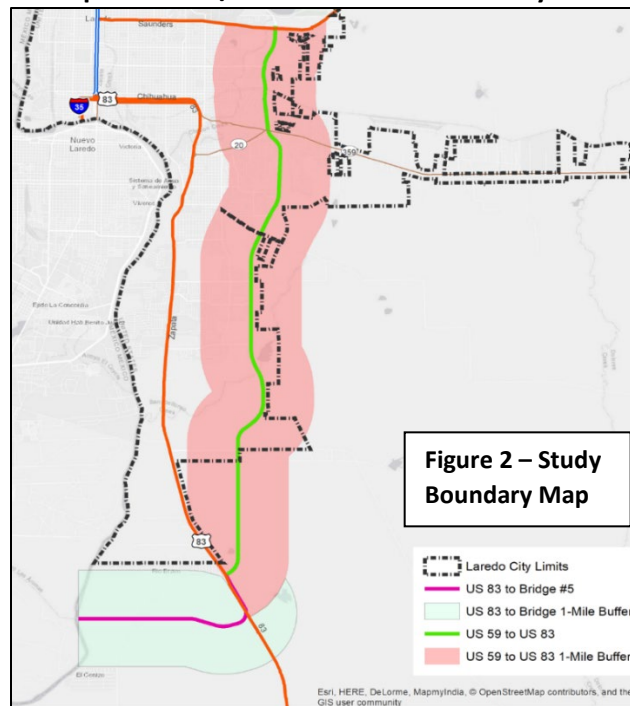
The updated Study was completed on 10/31/22. The WC-CL RMA provided a presentation of the study to the City of Laredo on 11/7/2022. Upon final concurrence by the City of Laredo, the WC-CL RMA will work to assist them to develop a defined zone for Loop 20 South from US 59 to proposed International Bridge 4/5. The next steps for the 2022 study are the following:

- Refine the TRZ boundary to exclude existing developed properties in the north and northwestern portion of the study area.
- Collaborate with landowners on annexation within the study area to capture the increment from new development prior to construction beginning.
- Recalculate the TRZ increment value based on the above and move forward with implementation



Utilizing the data from the 2022 study, the WC-CL RMA hosted two Transportation Reinvestment Zone workshops together with local elected officials, including Mayor Dr. Treviño, Mayor Pro Tempore, Council Member Vanessa Perez, and Council Member Alyssa Cigarroa; Gilbert Gonzalez; Dr. Tyler King; and Melissa Cigarroa. The members of the RMA board collaborated with its team of consultants, specifically economist, Travis James of TXP and Brian O'Reilly of Locke Lord. Data shown informs decisions for the present and impacts the future of funding for transportation projects in Laredo, Webb County, Texas. between the two workshops, one in July and another in August 2023, staff from the City of Laredo Economic Development, Fire, City Managers, Traffic, Planning, Bridge, Airport, Budget, and the Laredo-Webb County Area Metropolitan Planning Committee were present during the workshops. Additionally, members of the WC-CL RMA innovative financing committee, Robert Morris, and partner organizations from the private sector, including representatives from Crane Engineering and Killam Development, attended. The City of Laredo officials stated that they would be considering implementation and are looking to the next steps in the process. The Webb County-City of Laredo RMA will continue collaborating with City staff and officials to assist and have pledged funding to initiate the possible study for north Laredo.

Loop 20 South / Cuatro Vientos TRZ Study Area



Project Report

Webb County - City of Laredo
Regional Mobility Authority

2024

www.webblaredorma.org



VI. Springfield Phase IV (2022 - present)– Similar to Springfield Phase III, the WC-CL RMA passed **Resolution 22-37** to approve \$1M in construction funding for the City of Laredo to realize additional phases of the Springfield Avenue Corridor project. Phase IV of the project from Hospitality Drive to Bob Bullock Loop is the most recent portion that will move into design phase. The sponsorship and implementation are subject to the negotiation of an Interlocal Agreement (ILA) between the City and the RMA. The RMA submitted a draft ILA to the City on 4/9/2024. The RMA originally intended to utilize the Category 12 Strategic Partnership dollars for the funding of the project. The RMA has decided to utilize Vehicle Registration Fees as the source of the construction funding and executed the ILA on 9/9/2024. RMA GEC staff meet regularly with City of Laredo Engineer to move this project forward.

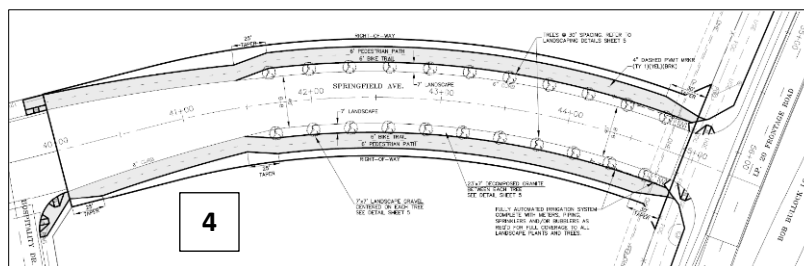
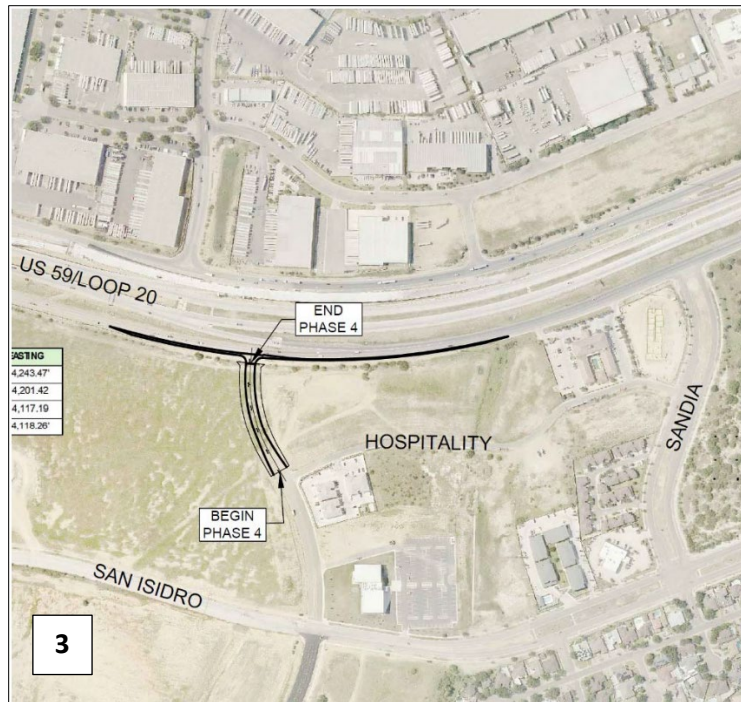


Figure 3 & 4 –Springfield Phase IV Project Map & Design Concept

Project Report

Webb County - City of Laredo
Regional Mobility Authority

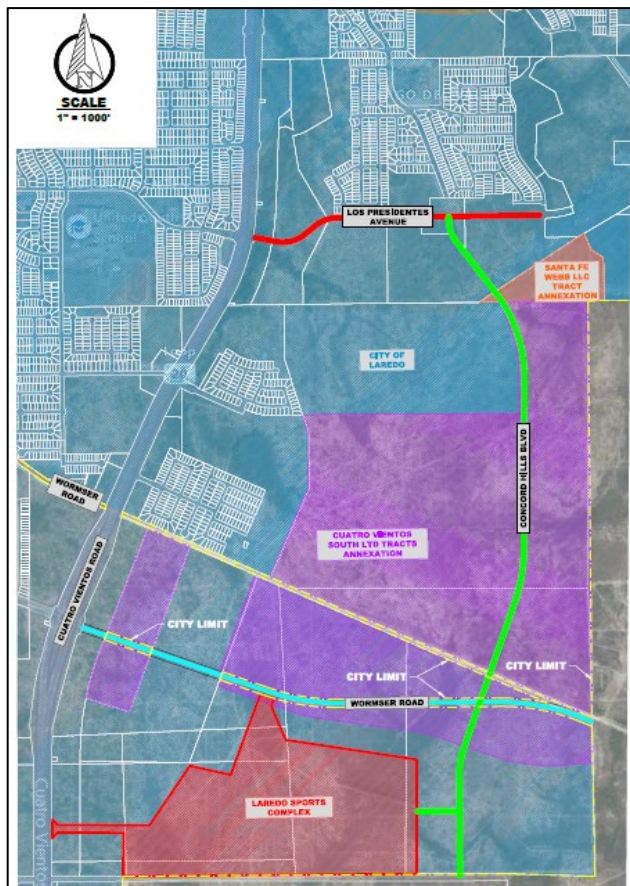
2024

www.webblaredorma.org



VII. Concord Hills Extension from Los Presidentes to Wormser Road/ Lomas Del Sur (Future Project) –

Similar to Springfield Phase III, the WC-CL RMA as committed \$1 million to the development of a new location 1.3 mile, 2-lane minor arterial roadway extension from Los Presidentes to Wormser Road/ Lomas Del Sur within a nominal ROW width of 90' in partnership with the City of Laredo. The project will provide a parallel route to Cuatro Vientos and provide additional access to the new Laredo Sports Complex and the Municipal Water Park. The sponsorship and implementation are subject to the negotiation of an Interlocal Agreement (ILA) between the City and the RMA. The RMA is working with the City and the property owners for the donation of the ROW and the finalization of the construction cost estimate for the project. The RMA recommitted its support in funding on the project February 14, 2024, at the February Board Meeting. On November 6, 2024, the WC-CL RMA Board of Directors passed a resolution to sign the ILA between the City and the WC-CL RMA for this project.



The project enjoys a history of support from the RMA. They passed a resolution to support the development of the project on March 25, 2022 (**Resolution 22-13**). The WC-CL RMA will contribute \$1.0M to this project as indicated by resolution in 2022 (**Resolution 22-35**).

Figure 5 – Location Map

Highlighted in green to the left, the planned extension of Concord Hills will add much needed connectivity to the south Laredo area.



VIII. Killam Industrial Blvd and FM 1472 Turn Lane Additions (Completed) – The WC-CL RMA developed plans, specifications and estimate for the implementation of proposed right turn lanes on FM 1472 northbound approaching Killam Industrial Blvd. and on Killam Industrial Blvd. westbound approaching FM 1472. Construction of the project let in November 2020 and is being constructed by the TxDOT-Laredo District as part of a larger TxDOT project called FM 1472 from Big Bend to Killam Industrial Blvd. As part of the project development, the WC-CL RMA developed plans, specifications and estimate for the relocation of a 12-inch water line (**Resolution 20-04**). The WC-CL RMA also entered into an Advanced Funding Agreement with TxDOT for construction of the project and inclusion in the larger FM 1472 project (**Resolution 20-07** and **Resolution 20-08**).

Total cost of the Killam Industrial Blvd. and FM 1472 project was \$2,121,568.80. A breakdown of the funding of the project is below:

- WC-CL RMA = \$861,408.05
- City of Laredo = \$1,161,158.75
- TxDOT-Laredo District = \$99,002.00

Work on FM 1472 from Big Bend to Killam Industrial Blvd. project began construction in **December 2021**. As of the fall 2024, it is complete.



Killam Industrial Blvd. Turn Lanes
Figure 6 – Location Map



IX. Webb County Fairgrounds (Life Downs) Master Plan Traffic Study (Completed) – WC-CL RMA passed a resolution (**Resolution 20-14**) to support Webb County in developing a traffic study to forecast the traffic impacts of the proposed improvements from the recently developed master plan and provide recommendations of traffic operation improvements for the surrounding roadway facilities to mitigate the increase in traffic. The support for the study was increased monetarily on **November 16, 2021 (Resolution 21-13)**. The WC-CL RMA provided **\$69,000 in funding** for the traffic study and performed the study with their consultants. The County revised the master plan for the Fair Grounds in January/ February 2022. The traffic study was completed in February 2023 and submitted to Webb County. The WC-CL RMA is awaiting a request from the County to provide an overview of the Study.

Webb County Fairgrounds Traffic Study

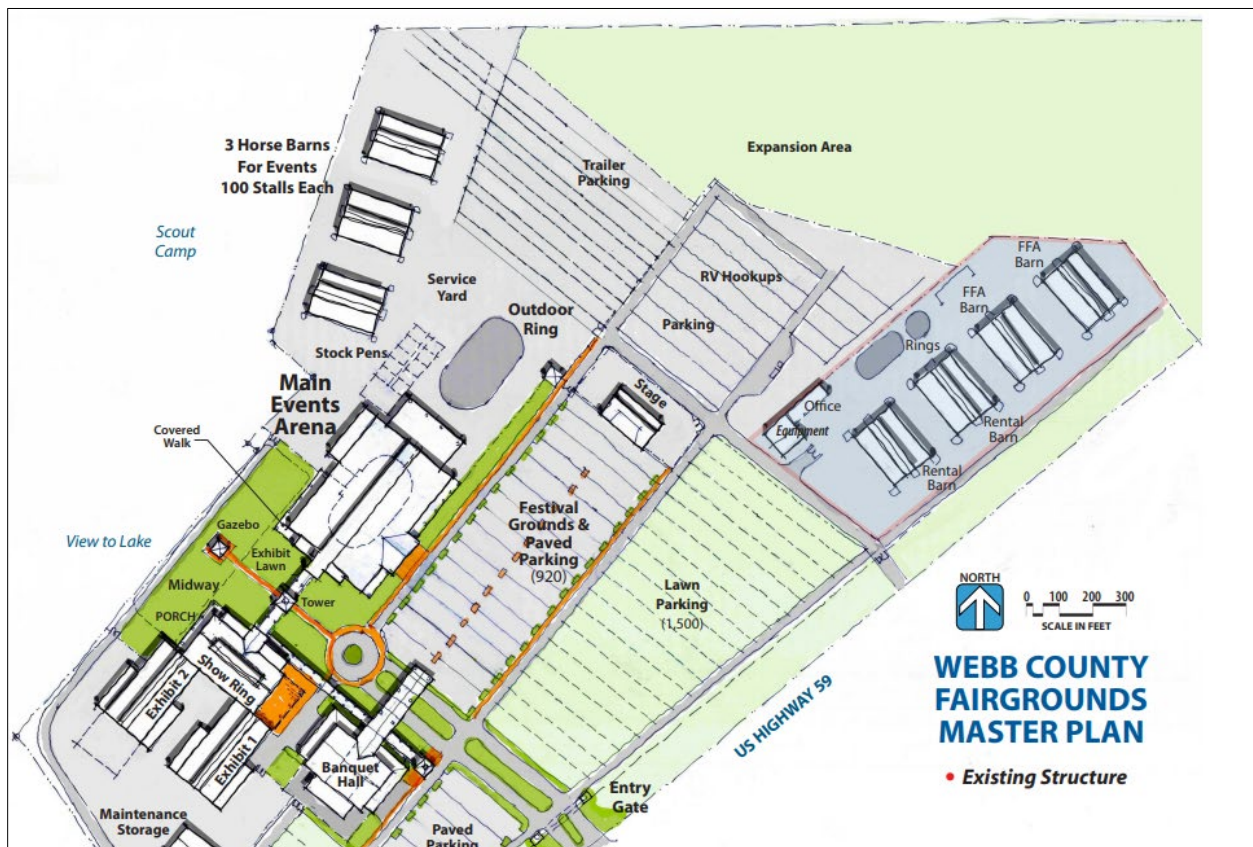


Figure 7 – Location Map

Project Report

Webb County - City of Laredo
Regional Mobility Authority

2024

www.webblaredorma.org



- X. **River Road from Aquero Blvd. to FM 1472 Implementation Study (Completed)** – The WC-CL RMA commenced an alignment study for a new location roadway called River Road from Aquero Blvd. to FM 1472. This is a follow-up action item to the North Laredo Webb County Transportation Planning Study which is the **Master Plan for the North Area of the community**. The study area limits spanned from North of IH 69-W to SH 255 and is bounded by the Rio Grande to the West and IH 35 to the East and provided a list of projects to implement from 2021 to 2040 that would improve mobility in that entire region. The River Road Corridor project was one of the identified projects and this alignment study is part of the project development time frame that was described in the North Laredo Webb County Transportation Planning Study. River Road is a new location roadway in north Laredo and will ultimately serve as a relief route for passenger vehicle traffic by-passing FM 1472 from approximately IH 69W to FM 3338.

The alignment study developed a final alignment of River Road and determined the traffic benefits for the surrounding area. The study investigated two (2) possible alignment routes and a No-Build option. It entailed the following components:

- Alignment will be developed with stakeholder (Private Landowners, City of Laredo, Webb County, LPD, LFD, UISD, CBP, etc.) input via workshops and public meetings
- Environmental Constraints Mapping and Analysis to identify areas of concern to avoid in the alignment (archaeological, biological, cultural, waters of the US, etc.).
- Traffic Analysis to determine the benefits of the movement of traffic to the surrounding roadways such as FM 1472, Killam Industrial Blvd., Riverbank Road, etc.

The cost of the study is \$250,000 and was jointly funded by the WC-CL RMA Vehicle Registration Fees and Laredo and Webb County MPO FHWA planning monies. The total duration of study was 10 months. Work on the study commenced in July 2022 and was completed in May 2023. The next steps for the project would consist of the following activities:

- Acceptance of Locally Preferred Alternative by WC-CL RMA Board, LWCAMPO Policy Committee and Laredo City Council by resolution
- Coordination between WC-CL RMA, City of Laredo, property owners and developers with interest in River Road
- Formalized partnerships among all participating parties
- Programming of funding for Schematic and Environmental
- Project scoping and initiation of Environmental
- Completion of Schematic including environmental mitigations
- Public comment on Environmental findings



- Completion of Environmental allowing for property acquisition
- Identification of all funding for PS&E and Construction

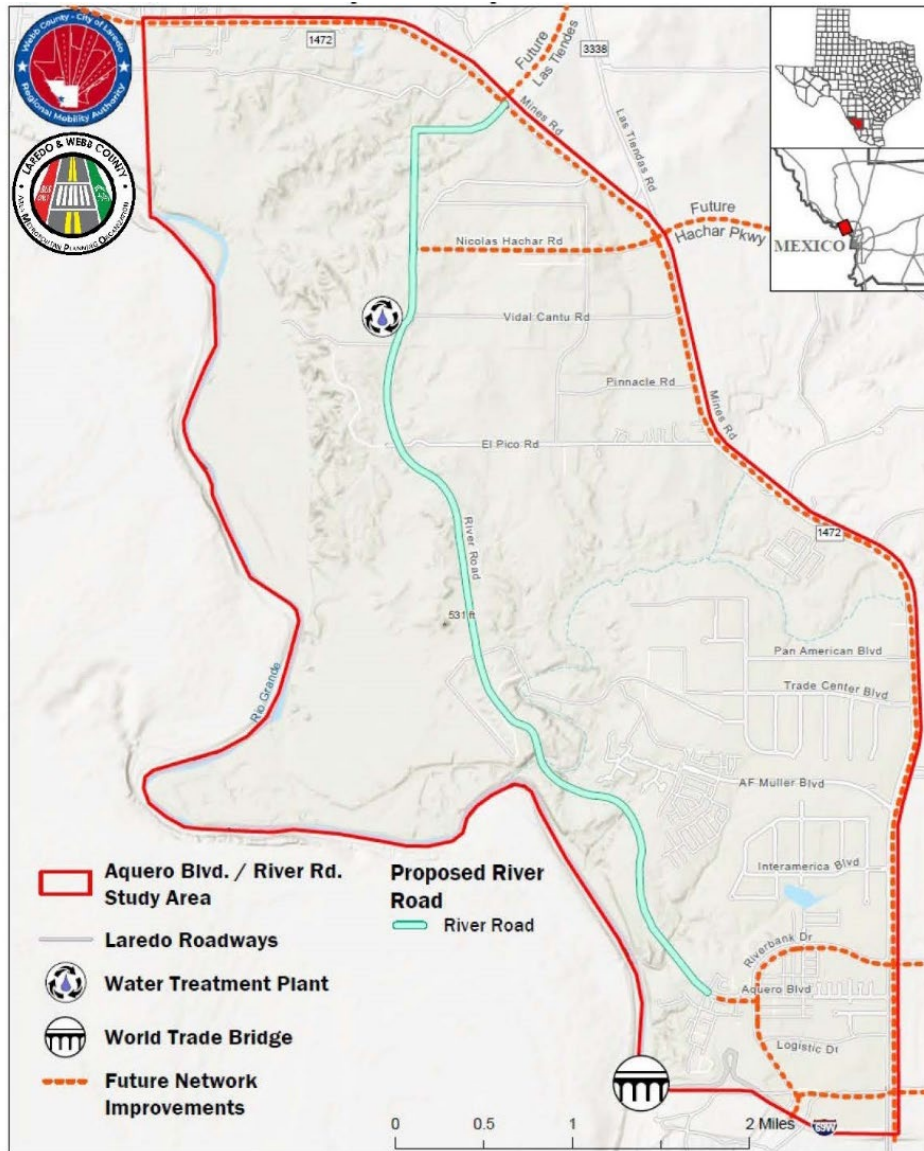


Figure 8 – Location Map

Project Report

Webb County - City of Laredo
Regional Mobility Authority

2024

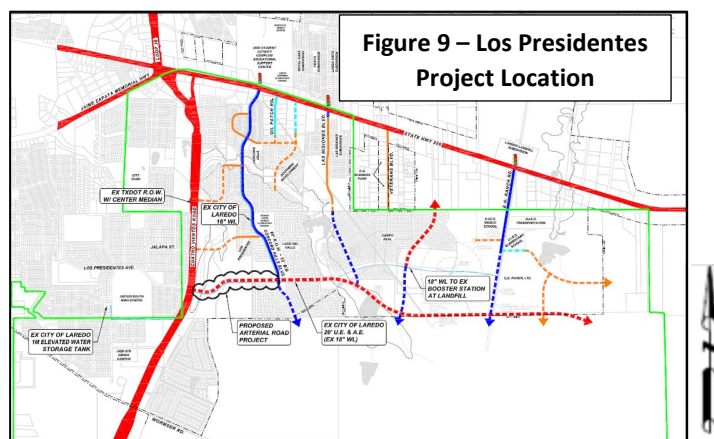
www.webblaredorma.org



XI. Los Presidentes Phase 1 and Phase 2A from Loop 20 South (Cuatro Vientos) to Brownwood Street (Completed) – WC-CL RMA developed plans, specifications and estimate for the implementation of a new location Modified Major Arterial that extends East from the intersection of Los Presidentes and Loop 20 South (Cuatro Vientos) for a length of 0.85 miles to the intersection of Los Presidentes and Brownwood Street in 2020. Construction of the project let in November 2020 and began construction in 2021, overseen by the City of Laredo. The project also includes an acceleration and deceleration lane on Loop 20 South (Cuatro Vientos) that was let for construction by TxDOT-Laredo District in October 2021. Originally, the City portion of the project extended from Cuatro Vientos to Concord Hills, known as Phase 1. The WC-CL RMA implemented additional project development efforts to extend the limits of the project from Concord Hills to Brownwood Street as part of the overall construction advertisement (**Resolution 20-13, Resolution 20-20, Resolution 20-21, and Resolution 20-22**), known as Phase 2A. The construction contract for Los Presidentes was awarded in January 2021 to MTZ Construction. The current contract amount was \$5,251,710.84 and began construction in March 2021. The TxDOT portion of the project was awarded in October 2021 to Anderson Columbia for \$877,029.58 and commenced construction in **Early 2022**. The project opened to traffic on Wednesday, February 1, 2023, marking an important milestone for this organization being the first major transportation infrastructure investment attaining completion since the WC- CL RMA was established in 2014.

A breakdown of the funding of obligation of the projects is as follows:

- | | |
|--|----------------|
| 1. WC-CL RMA = | \$2,064,550.00 |
| 2. City of Laredo = | \$3,218,110.00 |
| 3. Webb County Drainage District No. 1 = | \$924,700.00 |
| 4. TxDOT = | \$877,029.58 |



Project Report

Webb County - City of Laredo
Regional Mobility Authority

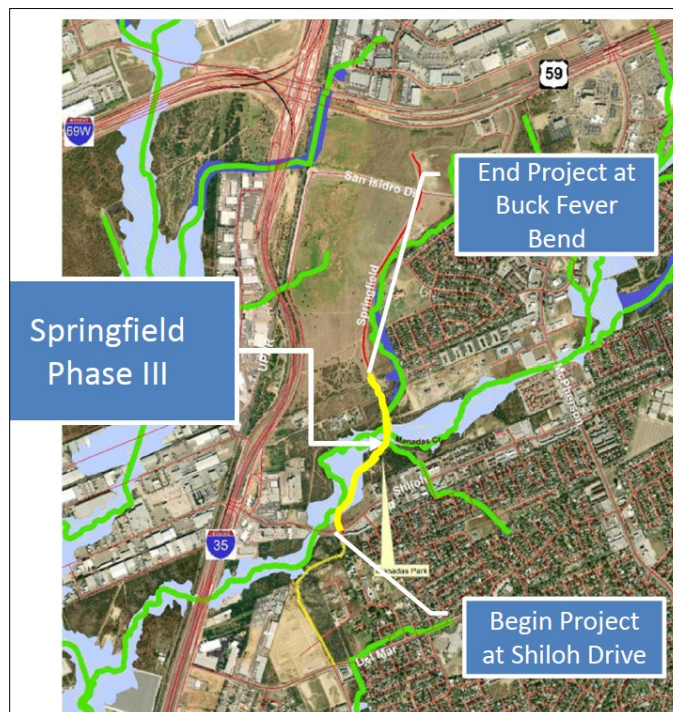
2024

www.webblaredorma.org



XII. Springfield Road Extension Project (Phase III) (Completed) – WC-CL RMA passed a resolution (**Resolution 20-12**) to provide financial support to the City of Laredo in the development and implementation of extending and inter-connecting Springfield Road in north Laredo from Del Mar to US 59 in July 2020. The WC-CL RMA approved a resolution (**Resolution 21-11**) to execute an Inter-Local Agreement with the City of Laredo to provide up to **\$2,000,000** for the construction of the project. The City of Laredo designed the project and led the development of the project. The project included a 3,170 linear foot extension with five (5) lanes of nine (9)-inch concrete pavement. Other important project items include the installation of a traffic signal at the intersection of Shiloh and Springfield, pavement markings, landscaping, and a 12-foot-wide sidewalk for cyclists and pedestrians to share on both sides of the road. The subsurface infrastructure includes storm drainage structures and a water distribution system. The project was advertised for construction in July 2021. It was awarded to AZAR Services, LLC for a contract amount of **\$4,206,702.55**. The WC-CL RMA funded **47.5% of the construction contract amount**. NTP for construction was provided in December 2021. The project was opened to traffic on August 2, 2023.

Figure 10- Springfield Road Phase III Extension



Project Report

Webb County - City of Laredo
Regional Mobility Authority

2024

www.webblaredorma.org



XIII. North Laredo Webb County Transportation Planning Study (Completed) - The RMA completed a long-term transportation study for mobility improvements in North Webb County from Loop 20 to Camino Columbia along FM 1472 to remove the current and future congestion on FM 1472 in 2020. The WC-CL RMA took action to develop the Study on May 07, 2018 (**Resolution 18-10**). The Study provided a clear assessment of mobility conditions in North Laredo and to provide a roadmap for growing the transportation network that can meet increasing mobility demands into the future. The goals of the study were to:

- Identify feasible projects that will help relieve congestion impacts in North Laredo
- Promote safety for all uses of the transportation network.
- Coordinate implementation and planning efforts comprehensively with International Bridge, Port-of-Entry logistics and the Freight Network.
- Coordinate private land development and public investments in mobility infrastructure
- Promote efficient movement of goods while reducing impacts of freight operations on neighborhoods and sensitive land.
- Improve overall transportation network connectivity and resiliency in North Laredo.

The study process included public input in the form of stakeholder meetings and public meetings, planning, and engineering to define and evaluate transportation solutions for the development of an ultimate implementation plan that will have a list of project priorities for the community to program and execute over the next 20 years. Total estimated cost of the Study was \$634,421. Funding for the study consisted of both federal and local vehicle registration fees monies. Eighty percent of the study was funded by the Coordinated Border Infrastructure (CBI) money which is federal money that is supervised by the Texas Department of Transportation (TxDOT). The remaining twenty percent was funded by the Webb County Vehicle Registration Fees which is supervised by the WC-CL RMA. Below was a breakdown of the funding for the study:

- | | |
|--|--------------|
| 1. TxDOT = | \$507,538.80 |
| 2. WC-CL RMA = | \$126,884.20 |
| Final Study Cost at Completion = \$608,429.57 | |



Upon its completion, the study was forwarded to the Laredo MPO Executive Director and staff, the TxDOT-Laredo District, the City of Laredo City Engineer, the Webb County Engineer, the Honorable Mayor Pete Saenz, the Honorable Council Member George Altgelt, the Honorable Judge Tano Tijerina, the Honorable Commissioner Cindy Liendo, the Honorable State Representative Richard Raymond, the Honorable State Representative Tracey King, the Honorable State Senator Judith Zaffirini and the Honorable Congressman Henry Cuellar.

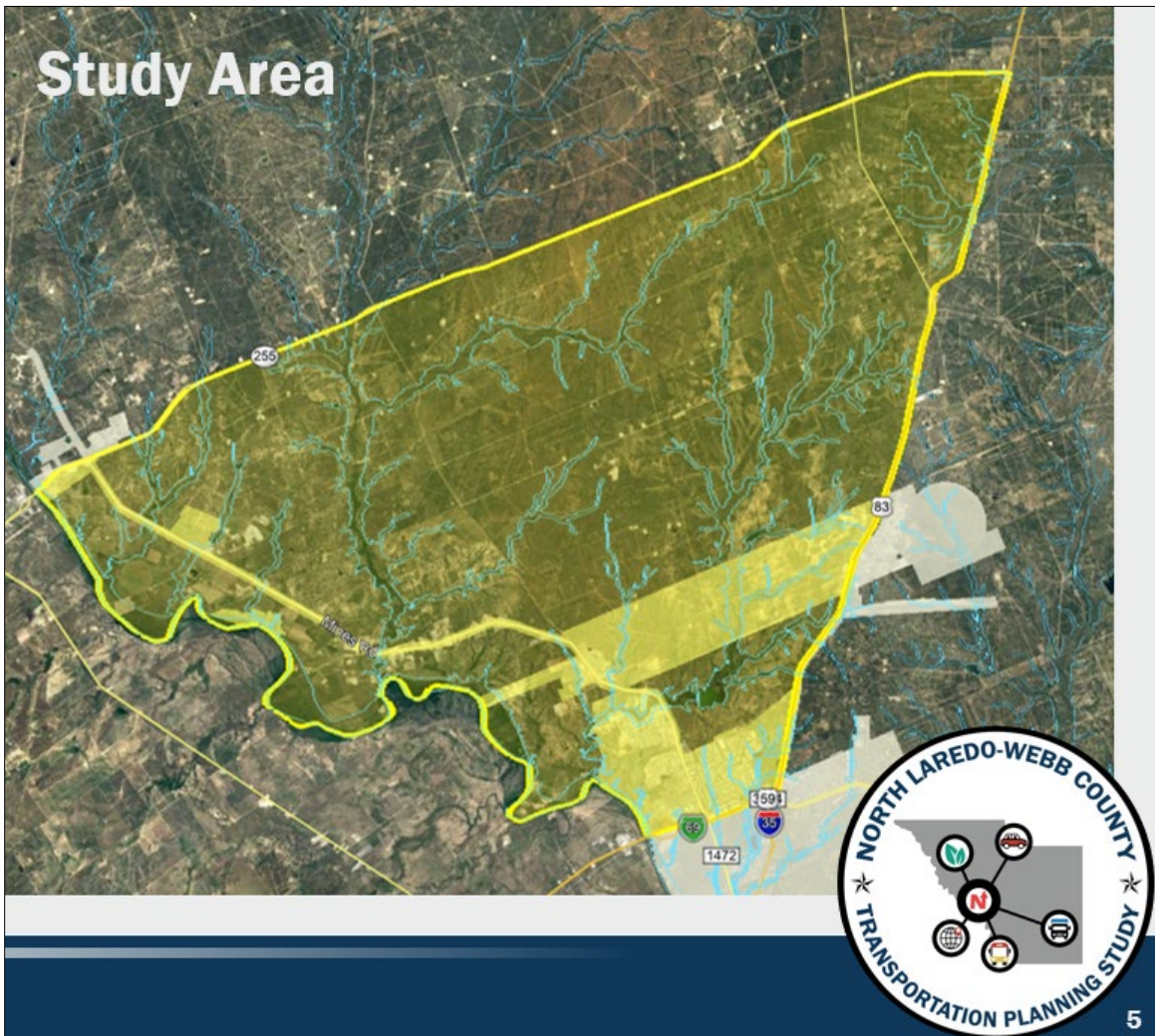


Figure 11 – Study Area

Project Report

Webb County - City of Laredo
Regional Mobility Authority

2024

www.webblaredorma.org



XIV. IH 69 W Improvements (Upgrade US 59 to Interstate Standards from International Blvd. to Business 59, to Duval County Line and ultimately to Houston, TX.) - Although the IH 69 project is not one sponsored by the RMA, it merits attention and is closely followed due to its great impact on transportation and mobility for Laredo and Webb County. The corridor is a designated major truck route that provides connectivity between the World Trade Bridge, US 83, and the future I-69W Corridor to Corpus Christi, as well as rail and freight handling facilities on the north and east sides of Laredo. For these reasons, IH 69W is a priority to the WC-CL RMA, the City of Laredo, Webb County, the Laredo & Webb County Area MPO, and the TxDOT-Laredo District. The WC-CL RMA invested time and monies for the advancement of the development of the Corridor to meet interstate standards from 2015 to 2017. These efforts included developing a financial plan to improve the Corridor via Design Build with Finance. Ultimately, the City of Laredo, Webb County, TxDOT-Laredo District and Laredo & Webb County Area MPO advanced the project via a Design-Bid Build approach by programming Category 2, 10 and 12 funding for construction letting in 2021, 2022 and 2023. The TxDOT-Laredo District has contracted multiple consultants for the development of plans, specifications and estimates for the full ultimate corridor improvements (main lanes and frontage roads).

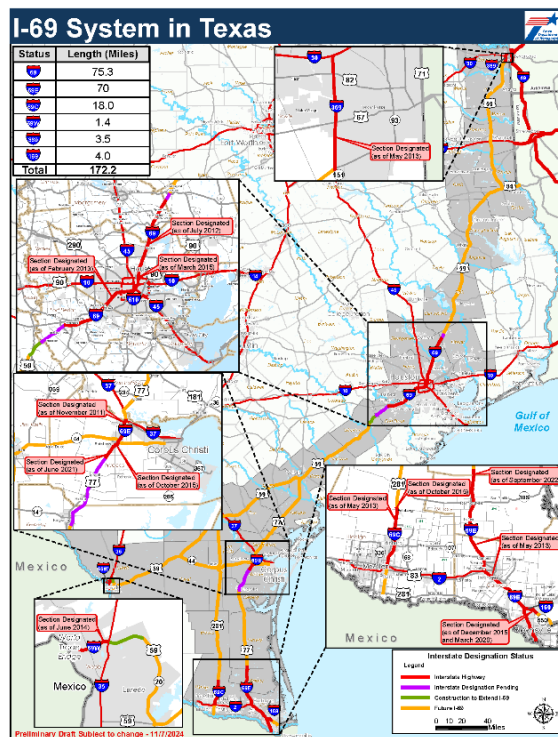


Figure 12 – I-69 Designation Location Map

Project Report

Webb County - City of Laredo
Regional Mobility Authority

2024

www.webblaredorma.org



XV. Previous Transportation Reinvestment Zone Studies (TRZ) – The WC-CL RMA has performed the following TRZ efforts to date:

- In its efforts to advance the Vallecillo Road Project and the Loop 20 Project, the WC-CL RMA commissioned its GEC to perform TRZ Feasibility Studies for the advancement of Vallecillo Road.
- The WC-CL RMA commissioned its GEC to perform a Countywide TRZ Study for the advancement of all road projects in the Webb County area.

XVI. Previous Grant Application Efforts – In addition to the INFRA Grant Application services that the WC-CL RMA provided to the City of Laredo and TxDOT, the WC-CL RMA invested monies to develop and submit applications for other federal grants such as:

- A FASTLANE Grant Application in 2016 for the development of the overpass at Jacaman Road and Loop 20. A highly competitive grant where communities across the United States of America were competing for a share \$500 Million, the USDOT received over \$9.8 Billion in applications. It should be noted that no community nor the DOT in the State of Texas received a grant award. Subsequently, the WC-CL RMA provided support with their GEC and pledged to provide funding support as part of the community local match for the second round of FASTLANE Applications, as well the INFRA Applications.
- FASTLANE/ INFRA Grant Program
- TIGER Grant Program in 2017 and the BUILD Grant Program in 2018
- Continue to assist with FHWA/SS4A grant program application

XVII. WC-CL RMA Plans for 2025 and Beyond (Including, but not limited to the following)

A. Vallecillo Road

1. Vallecillo overpass at Vallecillo Rd and IH35
2. Vallecillo Direct connectors/ Overpass with dedicated right turn lanes
 - North bound FM 1472 to East bound Vallecillo
 - South bound/ Overpass with dedicated left turn lanes from FM1472 to East Bound Vallecillo
3. Vallecillo Loop from IH 35 to SH59 - Possible expressway/ freeway section (main lanes and frontage roads)

B. Loop 20 (Cuatro Vientos)

1. Southern Extension from Mangana Hein Road to US 83
2. Overpasses at main intersecting roadways along Cuatro Vientos (Lomas del Sur, Sierra Vista, Cielito Lindo)



3. Extend Loop 20 (Cuatro Vientos) South of US 83 to intersect with the Future Outer Loop and Ultimately the International Bridge 4/5.
- C. FM 1472 (Mines Road)
 1. Mines Road – Consideration for Business IH-35
 2. FM 3338 Improvements and connections to FM 1472 and SH255
 3. Extension of Mines Road to Eagle Pass
- D. Proposed application to the LWCAMPO Carbon Reduction Program for the construction of a shared use path along Riverbank Drive in northwest Laredo
- E. International Bridge 4-5 – monitor on-going dialog between Webb County, developer, and City of Laredo for development and operations of this Bridge.
- F. IH-35 at Mile Marker 13 (Unitec Overpass and area Roadways)
- G. Hachar Road
 1. Hachar Rd. Direct connectors: North bound FM 1472 to East bound Hachar Rd, South bound FM1472 to East Bound Hachar
- H. Outer Loop - Construction of the Outer Loop, from US 83 in southern Webb County to Camino Colombia north of Laredo with priority emphasis on the segment from Hwy 59 to Hwy 359.
- I. Rail Improvements
 1. New International Rail line aligned crossing Bridge 4/5 and aligned with Outer Loop (East Rail By-Pass)
 2. Improvements to existing at grade crossings and potential future route for hyperloop/express rail for passenger/light freight
- J. Ports to Plains
 1. Improvements (widening) to Hwy 83 to Eagle Pass & Del Rio and to I27
 2. Connectors/interchanges at SH255 and Hwy 83
- K. Ports to Ports (IH 69 to the Ports of Corpus Christi and Houston)
- L. Bridge Operations
 1. Increase use of automation and dynamic scanning to increase freight movement
 2. Best practices at ports should be shared with others
- L. Technology
 1. Lanes dedicated to autonomous vehicles
 2. Integration of 5G network (or newer) with autonomous vehicles and traffic signalization



Conclusion

In summary, RMAs have historically been utilized by communities in different ways. Due to the broad range of power of RMAs, they have been used as a vehicle for the development of toll roads, to pool the tax bases of multiple pre-dominantly low moderate-income Counties to apply for a State Infrastructure Bank Loan, to develop multi-modal solutions for communities, etc. Here in Laredo, the WC-CL RMA can utilize its funding sources to perform studies to help develop new funding opportunities for transportation, and team with its partner agencies to advance priority roadway projects that improve mobility. In that area, the WC-CL RMA works to develop local roadway projects and make them shovel ready for future funding from the state and federal sources. In recent years, the WC-CL RMA has also functioned as a bridge in project delivery between Webb County, the City of Laredo, TxDOT, Laredo and Webb County Area MPO, etc. How it is utilized is determined by the WC-CL RMA Board of Directors with advisement from the local leaders of our community.