



## **2025 PROJECT REPORT**

**By: Antonio Rodriguez, PE, LGPP & Melisa Montemayor, LGPP**

**WC-CL RMA General Engineering Consultant (GEC) Deputy Program Manager and Program Manager**

**December 22, 2025**

### **Background:**

The Webb County City of Laredo Regional Mobility Authority (WC-CL RMA) was formally petitioned jointly by Webb County and the City of Laredo to the Texas Transportation Commission for its formation on April 15, 2013 (City of Laredo) and August 18, 2013 (Webb County). The Texas Transportation Commission approved the creation of the WC-CL RMA on February 27, 2014.

The WC-CL RMA is unique in Texas as it is the only RMA that was jointly formed by both a city and a county. The WC-CL RMA Board of Directors consists of nine (9) members. Four members of the Board of Directors are jointly selected by City Council Districts 1 and 2, Districts 3 and 4, District 5 and 6 and Districts 7 and 8. Four members of the Board of Directors are individually selected by members of Commissioners Court from each of the four precincts. The ninth member is the Chair of the Board of Directors who is directly appointed by the Governor of the State of Texas. Each Director serves as a volunteer and is not compensated for any of his or her time spent in service on the Board of Directors. Furthermore, no Director can have any financial interest that would benefit from the actions of the WC-CL RMA.

Since its formation, the WC-CL RMA Board was entrusted to organize the agency which entailed hiring consultants, developing policy, holding meetings, and filing regulatory annual and periodic reports, including the annual audit. In the last five years the WC-CL RMA has become involved in roadway construction projects throughout the community along with roadway studies and reports. The progress of those projects and future projects will be described later in this report.

The single revenue source for the WC-CL RMA is from the \$10 fee per vehicle registered in Webb County which was approved by the 83<sup>rd</sup> Texas Legislature to fund long-term transportation projects of a regional mobility authority. With these monies, the WC-CL RMA has been able to perform its role in developing solutions for helping to advance mobility priorities for Webb County and the City of Laredo. It should be noted that, at this time, the WC-CL RMA does not have any paid employees or facilities from which to conduct its business; however, it does have operating expenses. It is anticipated that a Project Coordinator position will be filled as a paid employee of the WC-CL RMA in the coming years. TxDOT and other entities such as IBC Bank and LJA Engineering have provided their facilities and resources for WC-CL RMA Board meetings.

Webb County- City of Laredo Regional Mobility Authority ●●●  
Project Report 2025



According to the financial summary reported to the Board of Directors at the October 2025 meeting, the WC-CL RMA has an asset balance of **14,002,747.14**. The WC-CL RMA also has been granted \$8.89 million of Category 12 – Strategic Partnership funds from TxDOT that is dedicated specifically for the construction of roadway projects and is currently being utilized to advance the Vallecillo Road Project, City of Laredo Colombia Solidarity International Bridge Expansion Project and the Webb County Mangana Hein Road Project.

The members of the Board of Directors are the following:

1. State of Texas Chair of the Board Director– Mr. Jed A. Brown
2. County Precinct No. 1 Director – Mr. Tony Arce, Jr.
3. County Precinct No. 2 Director – Mr. Oscar O. Lopez, Treasurer
4. County Precinct No. 3 Director – Mr. David Garcia
5. County Precinct No. 4 Director – Mrs. Diana Palacios
6. City District 1 & 2 Director – Mr. Jose Murillo
7. City District 3 & 4 Director – Mr. Alfonso Mendiola
8. City District 5 & 6 Director – Mr. Douglas B. Howland, Vice Chair
9. City District 7 & 8 Director – Mr. Arturo Dominguez, Secretary



---

*2025 Members of the Board: Top row, (L-R): Oscar Lopez, Diana Palacios, Doug Howland, Alfonso Mendiola, and David Garcia; Bottom row, (L-R): Jose Murillo, Arturo Dominguez, Jed Brown, and Tony Arce.*

---



### WC-CL RMA Projects:

- I. **Vallecillo Road, from FM 1472 to the IH-35 Southbound Frontage Road (February 2015 to Present)** - The development phase of the project is well underway. The complexities of the partnership are finalized and as the project sponsor the RMA has formalized contractual relationships with various entities:
  - a. Executed funding agreement with the Killam Company on March 4, 2024.
  - b. Amend its Interlocal Agreement with the City of Laredo. In turn, the City of Laredo is developing the ROW agreement with the Killam Company.
    - i. Amendment is to define roles and responsibilities for construction of the project. The RMA will be advertising and constructing the project, thereby will require access to the City of Laredo ROW to commence the work. The RMA approved execution of the amendment to the ILA to account for these updates on 11/6/2024.
  - c. Executed Advanced Funding Agreement (AFA) with TxDOT Laredo District on April 14, 2023.
    - i. The AFA Amendment from TxDOT to account for the updated funding for the project was approved on Oct. 18, 2024.
    - ii. The WC-CL RMA received the Federal Project Authorization and Agreement (FPAA) from the Laredo District to commence reimbursement requests for the schematic, environmental and PS&E development of the project on Dec. 19, 2024.
    - iii. The RMA will develop Amendment No. 2 for the project with TxDOT to update the project budget.
  - d. On April 2, 2025, the RMA met with HUD to begin the coordination and reporting for the Congressional Earmark funds that will be utilized for construction on the project. Now that the project is environmentally cleared by FHWA, the RMA will submit the environmental documents and FONSI for review and concurrence by HUD.

#### Completion milestones:

- Environmental studies are complete. The RMA submitted the environmental documents to TxDOT LRD in late August 2025. **TxDOT advised of NEPA clearance on Oct. 2, 2025.**
- Utility coordination is on-going with all utility providers along the route. The proposed utility test holes have been submitted to TxDOT in September 2025. The RMA is awaiting approval. ROW clearing and grubbing is estimated to last approximately 3 months.
- CRANE engineering completed the preparation of the new revised draft ROW parcel plats and strip map. This reflects the additional ROW required due to TxDOT's overpass project. These were submitted to TxDOT LRD and the City of Laredo for their review in October 2025. Once final approval is received from TxDOT, the RMA will issue final certified surveys and legal descriptions of the proposed ROW. Final documents were submitted to the City of Laredo in November 2025 to aid in their ROW acquisition process. Construction for utility relocation is estimated to commence in Summer 2026 with completion by late 2027.



- Upon completion of utility relocation, the RMA will submit the request for the State Letter of Authority (SLOA) and FPAA to begin the bid advertisement process. The anticipated duration between the request for the SLOA and receipt of the request is 3 months. Bid advertisement and letting is anticipated for late 2027.
- TxDOT LRD informed the RMA that a Raised Median Whitepaper was required for the project; a draft was completed this year with final submittal anticipated by the end of December 2025.
- The 60% PS&E submittal to the TxDOT Laredo District is anticipated for January 2025.
- The 100% PS&E submittal to the TxDOT Laredo District is anticipated for May 2025.
- Construction is anticipated to commence in the Spring of 2028 with completion anticipated for Summer of 2029.

#### **Background/History of the Project:**

The Laredo MPO Policy Committee requested that the RMA develop this new location roadway in early 2015, to assist in alleviating congestion on FM 1472. The project limits begin at the east side of the intersection FM 1472 and Muller Memorial Blvd. and will extend approximately 2.85 miles to the East and terminate at the southbound frontage road of IH 35. WC-CL RMA passed Resolution 20-16 to participate in the development of the project on August 28, 2020.

The implementation of this project will provide an alternate route for traffic from the World Trade Bridge area to IH 35, which will improve congestion along the currently, highly congested FM 1472. The implementation of this project will also provide a direct egress route for those living in the La Bota Ranch Subdivision and others in residential areas north of Muller Memorial Blvd. This roadway and infrastructure complementing its connection to IH 35 also opens prime property for industrial development and leads to possible future developments east of IH 35.

As the lead agency on the project and to develop an understanding of the cost and scope of it, the WC-CL RMA conducted preliminary environmental studies, as well as the development of a preliminary geometric schematic of the project. The WC-CL RMA also implemented and completed both traffic and geotechnical studies in 2020. At the time, the total project cost (including the value of the donated ROW which is roughly \$10 million) for the implementation of Vallecillo Road is \$50,655,522.00. The current total construction cost of the project, without utilities, is **\$31,271,178.**

The WC-CL RMA investigated multiple avenues to generate capital for the implementation of the project through local, state, and federal sources and was successful in attaining full project funding. Project partnership with dedicated financial and right of way resources have advanced to a critical point, with investment from the WC-CL RMA through Category 12 funds and Vehicle Registration Fees, City of Laredo, Killam Company including the donation of land, Category 7 funds through the LWCAMPO and a federal appropriations earmark made possible by Congressman Henry Cuellar



through the U.S. Department of Housing and Urban Development Community Project Funding program for a total amount of \$55,331,252.00 dedicated to the road project.

<b>Project Cost and Funding Breakdown 2024</b>		
<b>Project Components</b>		<b>Cost</b>
Engineering (WC-CL RMA) (Schematic, Environmental, PS&E & CEI)		\$9,182,693
Right-of-Way (Killam Company)		\$10,000,000
Construction		\$31,271,178
Utilities		\$3,643,331
<b>Total Project Cost</b>		<b>\$54,097,202</b>
<b>Public/Private Partnership Project</b>		<b>Funding</b>
Webb County-City of Laredo Regional Mobility Authority	16.6%	\$9,182,693
*City of Laredo (Construction and Utility)	15.6%	\$8,643,331
**Killam Company (including Right-of-Way)	30.2%	\$16,692,636
***Category 10 Federal Community Project Funds	5.4%	\$3,000,000
***Category 7 LWCAMPO Project Funds	32.2%	\$17,812,592
<b>****Vallecillo Funding Partnership</b>	<b>100%</b>	<b>\$55,331,252</b>

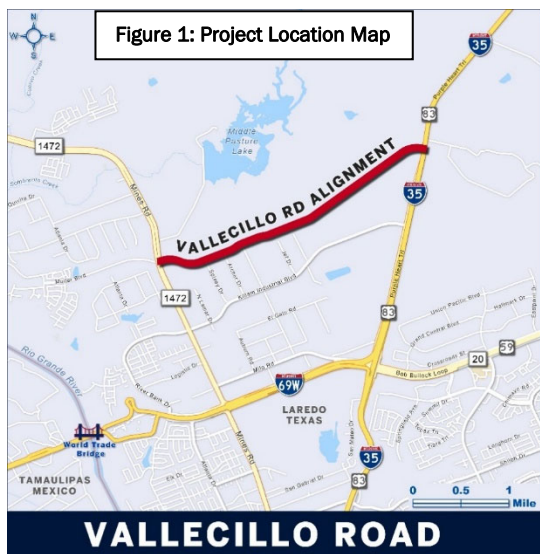
- \*Funds include \$5M dollar commitment to road construction and estimated water/sewer utility cost.
- \*\* ROW is expected to be clean without any structures, easements, or liens in the donation.
- \*\*\* Funding requires Local Match (20% for Category 10 and 5.8% for Category 7 funds).
- \*\*\*\* Partnership funding includes \$1,633,133 Local Match of Category 7 & Category 10 Funding.

These commitments have been codified via an Inter-Local Agreement between the WC-CL RMA and the City of Laredo, executed on September 18, 2020 (**Resolution 20-17**). It has also been codified via a Memorandum of Understanding between the WC-CL RMA and the Killam Company, executed on October 2, 2020 (**Resolution 20-18**).

The private-public team approached members of the Texas Transportation Commission to request the remaining balance in the funding gap, approximately 42% of the total project cost, to finalize the funding plan for the project and ultimately take over Vallecillo Road and as on-system State roadway. During these efforts, United States (US) Congressman Henry Cuellar committed \$3,000,000 to the project which reduced the request to the State of Texas. With support from US Congressman Cuellar, State Senator Judith Zaffirini, State Representative Richard Raymond, State Representative Tracy King, and former Laredo Mayor Pete Saenz, Chairman Brown led a series of delegations to Austin, TX. The first meeting with Transportation Commissioner Alvin New took place on June 22, 2022. A follow up meeting with TxDOT Executive Director Marc Williams occurred in



early August 2022. In both in-person meetings TxDOT was presented details of the project along with a request for assistance to resolve the funding gap in the 2022 Unified Transportation Plan (UTP).



Initially, funding for the project was not included in the draft UTP, but after extensive meetings and negotiations, Vallecillo made the final UTP with a local commitment to construct the roadway and a TxDOT leadership and Transportation Commission commitment to construct a future overpass that would cross the IH 35 Corridor to allow for the continuation of Vallecillo Road to the East to ultimately reach US 59. With this commitment, the Laredo, and Webb County Metropolitan Planning Organization (MPO) passed a resolution to advance \$16,500,000 in Category 7 funds to the project which effectively resolved the funding gap. The LWCAMPO later appropriated an additional \$1,312,592 million dollars in Category 7 funding to provide for the construction and made the appropriate revisions to the 2020-2045 MTP.

Moving forward, as the project sponsor, the RMA executed an Advanced Funding Agreement with TxDOT for the use of the Category 7 funds from the MPO and the use of part of the \$8.89 million of Category 12 – Strategic Partnership funds.



**II. Vallecillo Overpass (ongoing)** – This project is being led by the TxDOT Laredo District Office (LRD). It has an estimated construction cost of \$163M and is programmed for an FY 2030 – 2039 estimated range of letting per the 2026 UTP. To date, the project is not fully funded for construction. The MPO has allocated \$16M of Category 2 funds to the construction of the project; thus, the project still has a \$147M funding gap. The image below indicates the *Interchange at Vallecillo Road – Laredo* project has been included in the UTP but does not reflect the most recent estimated construction cost updated a few months ago. Local stakeholder meetings are on-going and include the RMA, State Representative Richard Raymond Peña, Rolando Ortiz (Killam Company) hosted by the TxDOT Laredo District and their staff District Engineer Epi Gonzalez, TP&D Director Roberto Rodriguez, and PM Ana Duncan to coordinate and receive updates on the progress of the schematic design for the project. The last stakeholder meeting included Texas Transportation Commissioner Alex Meade.

5	I-35	Direct Connectors 3, 4, and 6 at I-35/US 59 - Laredo 0018-06-185	0.187 Mi South of I-35/ US 59 Interchange	0.205 Mi North of I-35/ US 59 Interchange	FY 2026-2029	\$93,505,334	No Funding Change	No	Cat. 12 Strategic Priority .....\$93,505,334 TOTAL .....\$93,505,334
6	I-35	Interchange at Vallecillo Road - Laredo 0018-06-218	0.50 Mi North of Vallecillo Road	0.50 Mi South of Vallecillo Road	FY 2030-2035	\$130,000,000	No Funding Change	No	Cat. 2 Metro/Urban Corridor .....\$16,000,000 Remaining funding TBD .....\$114,000,000 TOTAL .....\$130,000,000
7	US 83	Widen Non-Freeway US 83 - Laredo 0037-10-040	1 Mi North of SH 255	Los Botines Lane	FY 2026-2029	\$50,400,000	No Funding Change	No	Cat. 4 Rural .....\$50,400,000 TOTAL .....\$50,400,000

**III. FHWA Safe Streets and Roads for All (SS4A) Vision Zero Webb Laredo Safety Action Plan Development (August 2023 to Present)** – In April 2025, the RMA, with support from the U.S.

Department of Transportation and the City of Laredo, announced the completion of the Vision Zero Webb Laredo Comprehensive Safety Action Plan. The Plan is now available at the [www.visionzerowebblaredo.com](http://www.visionzerowebblaredo.com) website for digital download, along with various technical appendices. Since adopting the Comprehensive Safety Action Plan, the RMA submitted a Safe Streets and Roads for All (SS4A) implementation grant application for \$24,901,970 (80% federal: \$19,921,576; 20% local: \$4,980,394) on June 25, 2025, including roadway safety improvements on 12 different TxDOT and City of Laredo roadways across the community. In July, LJA and Toole Design, with Laredo ISD, completed a Safe Routes to School pilot study at six campuses including meetings, interviews, field reviews, a walk audit, and recommendations. The RMA supported the City of Laredo in moving forward with a Laredo Webb County Area Metropolitan Planning Organization (LWCAMPO) TA Set-Aside application for the implementation of recommended quick-build improvements around each campus tied to that pilot study. Concurrently, the team worked with United ISD on more detailed planning and design activities for school-bus shelters outside the Laredo City Limits in Colonias just east of Laredo.



The RMA has been working on the grant close out steps which include submitting a final reimbursement invoice to FHWA and compilation of final reports. FHWA staff have been responsive to inquiries, despite the government shutdown, and the RMA is expected to meet the grant compliance terms and conditions.



**Background:**

In 2023 the WC-CL RMA successfully secured funds from the U.S. Department of Transportation’s Safe Streets and Roads for All grant program for the development of a safety action Plan aimed at preventing roadway fatalities and serious injuries in Webb County and Laredo. Through local matching funds from the WC-CL RMA and the City of Laredo, the Vision Zero Webb Laredo Comprehensive Safety Action Plan was made possible, and now, in 2025, the Plan is complete and up for adoption by local governmental agencies. This includes its recent adoption by the RMA board, on Wednesday, March 26, 2025, and by the Webb County & Laredo Area MPO Policy Committee on April 16, 2025, and the City of Laredo City Council on April 21, 2025.

Vision Zero is a comprehensive approach to road safety that aims to eliminate all traffic fatalities and severe injuries while ensuring safe, healthy, and equitable mobility for all. The Plan is a strategy that emphasizes the shared responsibility of various stakeholders, including government agencies, transportation Planners, law enforcement, community organizations, and individuals, in creating safer streets and promoting sustainable transportation options.

This Plan is a major step in reducing crashes that result in death or serious injury for our region.

- In 2022, 119 people were killed or seriously injured on streets in Webb County
- Between 2018 and 2022, there have been 43,826 crashes.
- Since 2020 crash numbers continue to increase

The Vision Zero Webb Laredo Comprehensive Safety Action Plan is aimed at providing solutions to reduce and eliminate crashes that cause serious injuries and deaths using the Safe Systems Approach.

The Comprehensive Safety Action Plan consists of two main components, actions and capital improvements, followed by a financing guide.

- **Action Plan:** Contains a series of policies and agency efforts that are designed to be specific, measurable, actionable, and timebound.
- **Capital Plan:** Contains systemic countermeasure recommendations for prevalent types of crashes within the region as well as infrastructure Plans for 16 high-priority project locations associated with areas of elevated crash risk, as identified through the High Injury Network (HIN) and systemic safety analysis performed in support of this Plan.
- **Financial Resources:** Provides a list of financial resources for the future implementation of the infrastructure Plans.

Assembly of the Plan was initiated through the data collection from City of Laredo departments, federal resources, TxDOT, Webb County, State agencies, and school districts. To capture public feedback in the Plan, a community wide survey was launched, and several targeted outreach methods were employed to collect survey responses, a Safe Streets and Roads for All interactive session was held to gather feedback from the public. Other community events and tabling efforts



were held to promote public awareness of the Plan. Public feedback was used to inform the prioritization of project locations.

Two stakeholder committees were formed: the Vision Zero Working Group and the Safe Transportation Advisory Council. Committee members assisted in evaluating the Actions component of the Comprehensive Safety Action Plan, as well as provided input at each step of the Plan's development.

The Vision Zero Webb Laredo Comprehensive Safety Action Plan encompasses all efforts made to develop the Plan, alliances made, feedback heard; and ultimately, provides a guide for local governmental agencies to reach our Goal to Zero deaths and serious injuries on local roadways. Now that the Plan is complete, it is available for any jurisdiction in the Webb County region for adoption. The formal adoption then qualifies that entity for [Safe Streets and Roads for All](#) Implementation funds.



---

*Vision Zero Webb Laredo Kickoff Media Event in downtown Laredo, February 29, 2024*

---



---

*Mayoral Proclamation at Laredo City Hall: October as Walktober, Pedestrian Safety Month, October 28, 2024*

---



**IV. North Laredo Area Transportation Reinvestment Zone (TRZ) Study (August 2023 to Present)** – The North Laredo TRZ Study Interlocal Agreement (ILA) is fully executed and in effect as of February 19, 2025. The WC-CL RMA is working with the City of Laredo on the next steps, including the definition of the study area.

**Background:** The City of Laredo City Council has asked the WC-CL RMA to work in partnership to perform a TRZ Study in the North Laredo Area. The WC-CL RMA board approved **Resolution 23-09** on August 1, 2023, to negotiate and enter into an interlocal agreement (ILA) with the City of Laredo and committed to funding up to 50% of the study cost. The City of Laredo and the RMA began developing an Interlocal Agreement to codify the share of the funding. The RMA recommitted its support in funding the project on February 14, 2024, during a Board Meeting. On November 6, 2024, the RMA Board of Directors passed a resolution to sign the ILA for this project.

**V. Cuatro Vientos / Loop 20 Transportation Reinvestment Zone (TRZ) Study (Completed) & Implementation (Ongoing)** – The City would like to commence the process of implementing the TRZ with support from the RMA. The Cuatro Vientos TRZ ILA was executed as of March 19, 2025. An implementation kick-off meeting was held on June 12, 2025. On June 24, 2025, the RMA project team individually met with staff from various City of Laredo departments including Planning and Zoning, Engineering, Traffic, Economic Development, Finance, Budget and the Tax Departments to explain the implementation process and describe the roles of each department in the process. The project is anticipated to be complete in the Spring of 2026.

**Background/ History:**

In 2018, the RMA commissioned its GEC to perform a TRZ Study for the advancement of Loop 20 South from US 59 to US 83 to upgrade the existing rural divided facility to a controlled access freeway facility with a direct connection to the future Port of Entry, International Bridge 5. The study was conducted in partnership with GEC’s consultant team, TXP.

The 2018 study was a follow-up to City Council action taken on 9/18/2017. City Council requested that the WC-CL RMA perform a 2-mile wide TRZ study along Loop 20 South that would extend from US 59 to the Rio Grande. The study focused on the performance of a possible 2-mile wide TRZ. The Study was completed in the Summer of 2018 and presented to the Laredo and Webb County MPO. Upon final concurrence by the City of Laredo, the WC-CL RMA will work with the City of Laredo to develop a defined zone for Loop 20 South from US 59 to proposed International Bridge 4/5. The next steps for the study were the following:

- Refine the TRZ boundary to exclude existing developed properties in the north and northwestern portion of the study area.
- Consider extending the TRZ boundary east along State Highway 359 to take advantage of pending projects that would access and utilize Loop 20 improvements.



- Collaborate with landowners on annexation within the study area to capture the increment from new development prior to beginning construction.
- Recalculate the TRZ increment value based on the above and move forward with implementation.

The WC-CL RMA was approached by the City of Laredo in late 2021 to partner and update the TRZ study for the Cuatro Vientos corridor from Hwy 59 south to the proposed bridge 4/5 location. To respond to the request, the WC-CL RMA hosted a TRZ workshop on December 17, 2021, with attendance from then Mayor Pete Saenz, Laredo, and Webb County Area MPO Executive Director Juan Mendive and then City of Laredo Economic Development Director Teclo Garcia to strategize the update of the 2018 Loop 20 South TRZ Study and determine next steps. In May 2022, the WC-CL RMA commenced work on the update of the 2018 TRZ Study for Cuatro Vientos from US 59 to the proposed International Bridge 4/5. The 2022 Study was a joint venture with the City of Laredo.

The 2022 Study accounted for the following changes that occurred from the 2018 Study:

- Due to 2022 State Legislation, Counties are now able to enact TRZs.
- Tax rates have declined as property values have increased.
- Home prices in Study Area have increased substantially.
- 2017 = \$125,000
- 2022 = \$200,000
- New master planned developments along Loop 20 will continue to increase traffic.
- The increase in interest rates could dampen demand over the subsequent years; thus, impacting the revenue projection.

The Study projects a revenue forecast that ranges from \$131.8 million and \$354.7 million in nominal incremental tax revenue assuming a 50 percent allocation to the TRZ.

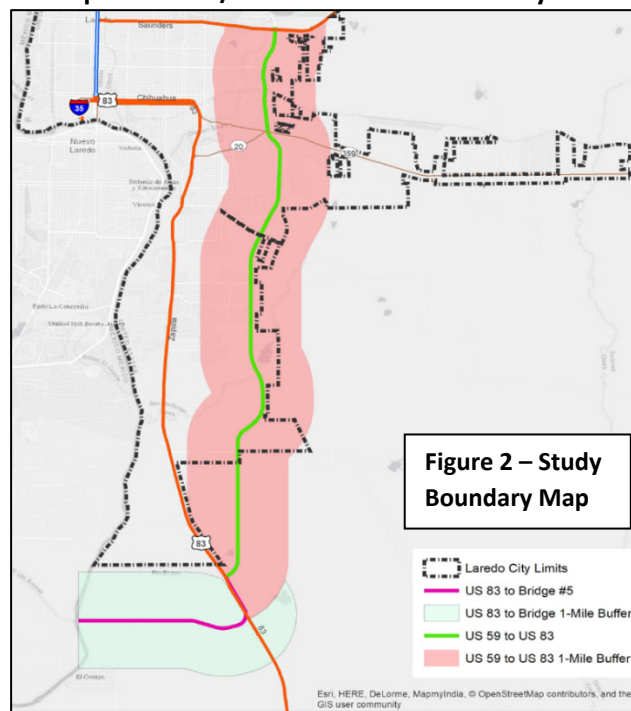
The updated Study was completed on 10/31/22. The WC-CL RMA provided a presentation of the study to the City of Laredo on 11/7/2022. Upon final concurrence by the City of Laredo, the WC-CL RMA will work to assist them to develop a defined zone for Loop 20 South from US 59 to proposed International Bridge 4/5. The next steps for the 2022 study are the following:

- Refine the TRZ boundary to exclude existing developed properties in the north and northwestern portion of the study area.
- Collaborate with landowners on annexation within the study area to capture the increment from new development prior to beginning construction.
- Recalculate the TRZ increment value based on the above and move forward with implementation.



Utilizing the data from the 2022 study, the WC-CL RMA hosted two Transportation Reinvestment Zone workshops together with local elected officials, including Mayor Dr. Treviño, Mayor Pro Tempore, Council Member Vanessa Perez, and Council Member Alyssa Cigarroa; Gilbert Gonzalez; Dr. Tyler King; and Melissa Cigarroa. The members of the RMA board collaborated with its team of consultants, specifically economist, Travis James of TXP and Brian O’Reilly of Locke Lord. Data shown informs decisions for the present and impacts the future of funding for transportation projects in Laredo, Webb County, Texas. between the two workshops, one in July and another in August 2023, staff from the City of Laredo Economic Development, Fire, City Managers, Traffic, Planning, Bridge, Airport, Budget, and the Laredo-Webb County Area Metropolitan Planning Committee were present during the workshops. Additionally, members of the WC-CL RMA innovative financing committee, Robert Morris, and partner organizations from the private sector, including representatives from Crane Engineering and Killam Development, attended.

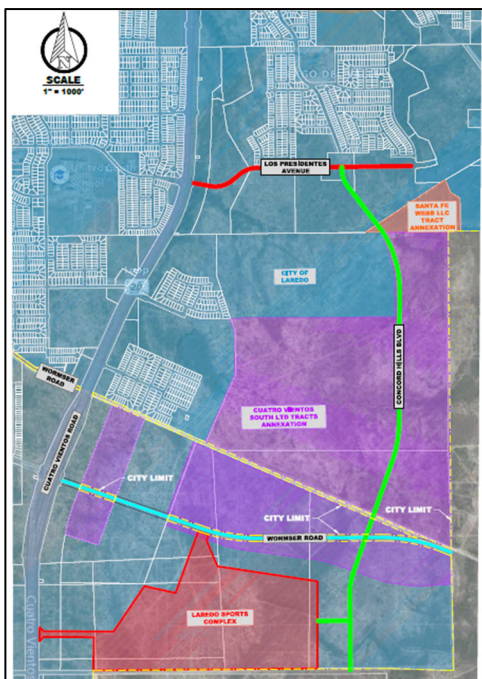
**Loop 20 South / Cuatro Vientos TRZ Study Area**





**VI. Concord Hills Extension from Los Presidentes to Wormser Road/ Lomas Del Sur (Future Project) –**

Similar to Springfield Phase III, the WC-CL RMA as committed \$1 million to the development of a new location 1.3 mile, 2-lane minor arterial roadway extension from Los Presidentes to Wormser Road/ Lomas Del Sur within a nominal ROW width of 90’ in partnership with the City of Laredo. The project will provide a parallel route to Cuatro Vientos and provide additional access to the new Laredo Sports Complex and the Municipal Water Park. The project will provide a parallel route to Cuatro Vientos and provide additional access to the new Laredo Sports Complex and the Municipal Water Park. The ROW acquisition is ongoing. The draft parcel plats have been submitted to the City and the City is moving forward with the landowner coordination for acquisition. The City is coordinating a meeting with the property owners to advance the donation agreement. The design is greater than 90% complete. The RMA recommitted its support in funding the project February 14, 2024, at the February Board Meeting. On November 6, 2024, the WC-CL RMA Board of Directors passed a resolution to sign the ILA between the City and the WC-CL RMA for this project.



The project enjoys a history of support from the RMA. They passed a resolution to support the development of the project on March 25, 2022 (**Resolution 22-13**).

The project is being developed through cooperation with various agencies and stakeholders. The design of the project is being donated by one of the major stakeholders, Cuatro Vientos South, LTD. The ROW for the project is largely being donated by Cuatro Vientos South, LTD as well as several other landowners. Construction of the project is being funded by the following:

- Webb County City of Laredo RMA                   \$1,000,000
- City of Laredo -   \$3,895,000
- Webb County Drainage District No. 1 -         \$325,000
- Total Construction Budget =                     \$5,220,000

**Figure 5 – Location Map**  
Highlighted in green to the left, the planned extension of Concord Hills will add much needed connectivity to the south Laredo area.



**VII. Springfield Phase IV (–Completed)**– All in the span of four months, the project came to life. A groundbreaking ceremony was celebrated on March 24, 2025, and by July it was opened to traffic. Project partners gathered on site to cut a ribbon and celebrate a crucial connector between north and central Laredo. The project exemplifies effective cooperation between the City of Laredo staff with acquiring right-of-way and design; the RMA funding construction and testing, and TxDOT facilitating timely progress and connection to the IH 35 frontage road, footing the bill for access to the West Bound Frontage Road at Loop 20.

Similar to Springfield Phase III, the WC-CL RMA passed **Resolution 22-37** to approve \$1M in construction funding for the City of Laredo to realize additional phases of the Springfield Avenue Corridor project. Phase IV of the project from Hospitality Drive to Bob Bullock Loop is the most recent portion of the project to move forward. The RMA originally intended to utilize the Category 12 Strategic Partnership dollars for the funding of the project. The RMA has decided to utilize Vehicle Registration Fees as the source of the construction funding and executed the ILA on Sept. 9, 2024. RMA GEC staff met regularly with City of Laredo Engineer to track the progress of this project.



Project partners break ground.  
on Springfield PH. IV in March 2025



**VIII. Killam Industrial Blvd and FM 1472 Turn Lane Additions (Completed)** – The WC-CL RMA developed plans, specifications and estimate for the implementation of proposed right turn lanes on FM 1472 northbound approaching Killam Industrial Blvd. and on Killam Industrial Blvd.



westbound approaching FM 1472. Construction of the project let in November 2020 and is being constructed by the TxDOT-Laredo District as part of a larger TxDOT project called FM 1472 from Big Bend to Killam Industrial Blvd. As part of the project development, the WC-CL RMA developed plans, specifications and estimate for the relocation of a 12-inch water line (**Resolution 20-04**). The WC-CL RMA also entered into an Advanced Funding Agreement with TxDOT for construction of the project and inclusion in the larger FM 1472 project (**Resolution 20-07** and **Resolution 20-08**).

Total cost of the Killam Industrial Blvd. and FM 1472 project was \$2,121,568.80. A breakdown of the funding of the project is below:

- WC-CL RMA = \$861,408.05
- City of Laredo = \$1,161,158.75
- TxDOT-Laredo District = \$99,002.00

Work on FM 1472 from Big Bend to Killam Industrial Blvd. project began construction in **December 2021**. As of the fall 2024, it is complete.



Killam Industrial Blvd. Turn Lanes  
Figure 6 – Location Map



**IX. Webb County Fairgrounds (Life Downs) Master Plan Traffic Study (Completed)** – WC-CL RMA passed a resolution (**Resolution 20-14**) to support Webb County in developing a traffic study to forecast the traffic impacts of the proposed improvements from the recently developed master plan and provide recommendations of traffic operation improvements for the surrounding roadway facilities to mitigate the increase in traffic. The support for the study was increased monetarily on **November 16, 2021 (Resolution 21-13)**. The WC-CL RMA provided **\$69,000 in funding** for the traffic study and performed the study with their consultants. The County revised the master plan for the Fair Grounds in January/ February 2022. The traffic study was completed in February 2023 and submitted to Webb County. The WC-CL RMA is awaiting a request from the County to provide an overview of the Study.

### Webb County Fairgrounds Traffic Study

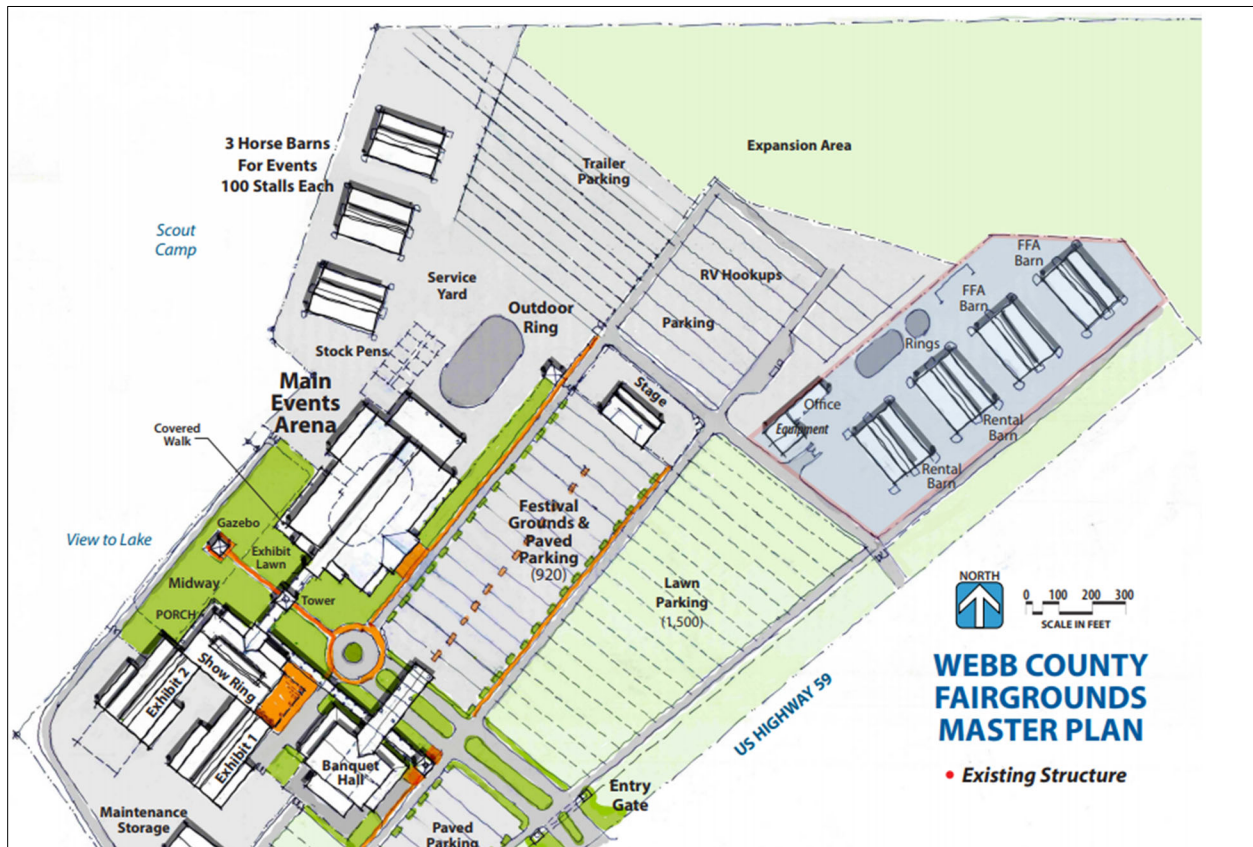


Figure 7 – Location Map



- X. **River Road from Aquero Blvd. to FM 1472 Implementation Study (Completed)** – The WC-CL RMA commenced an alignment study for a new location roadway called River Road from Aquero Blvd. to FM 1472. This is a follow-up action item to the North Laredo Webb County Transportation Planning Study which is the **Master Plan for the North Area of the community**. The study area limits span from North of IH 69-W to SH 255 and is bounded by the Rio Grande to the West and IH 35 to the East and provided a list of projects to implement from 2021 to 2040 that would improve mobility in that entire region. The River Road Corridor project was one of the identified projects and this alignment study is part of the project development time frame that was described in the North Laredo Webb County Transportation Planning Study. River Road is a new location roadway in north Laredo and will serve as a relief route for passenger vehicle traffic bypassing FM 1472 from IH 69W to FM 3338.

The alignment study developed a final alignment of River Road and determined the traffic benefits for the surrounding area. The study investigated two (2) possible alignment routes and a No-Build option. It entailed the following components:

- Alignment will be developed with stakeholder (Private Landowners, City of Laredo, Webb County, LPD, LFD, UISD, CBP, etc.) input via workshops and public meetings.
- Environmental Constraints Mapping and Analysis to identify areas of concern to avoid in the alignment (archaeological, biological, cultural, waters of the US, etc.).
- Traffic Analysis to determine the benefits of the movement of traffic to the surrounding roadways such as FM 1472, Killam Industrial Blvd., Riverbank Road, etc.

The cost of the study is \$250,000 and was jointly funded by the WC-CL RMA Vehicle Registration Fees and Laredo and Webb County MPO FHWA planning monies. The total duration of study was 10 months. Work on the study commenced in July 2022 and was completed in May 2023. The next steps for the project would consist of the following activities:

- Acceptance of Locally Preferred Alternative by WC-CL RMA Board, LWCAMPO Policy Committee and Laredo City Council by resolution
- Coordination between WC-CL RMA, City of Laredo, property owners, and developers with interest in River Road
- Formalized partnerships among all participating parties
- Programming of funding for Schematic and Environmental
- Project scoping and Environmental
- Completion of Schematic including environmental mitigations
- Public comment on Environmental findings
- Completion of Environmental allowing for property acquisition
- Identification of all funding for PS&E and Construction

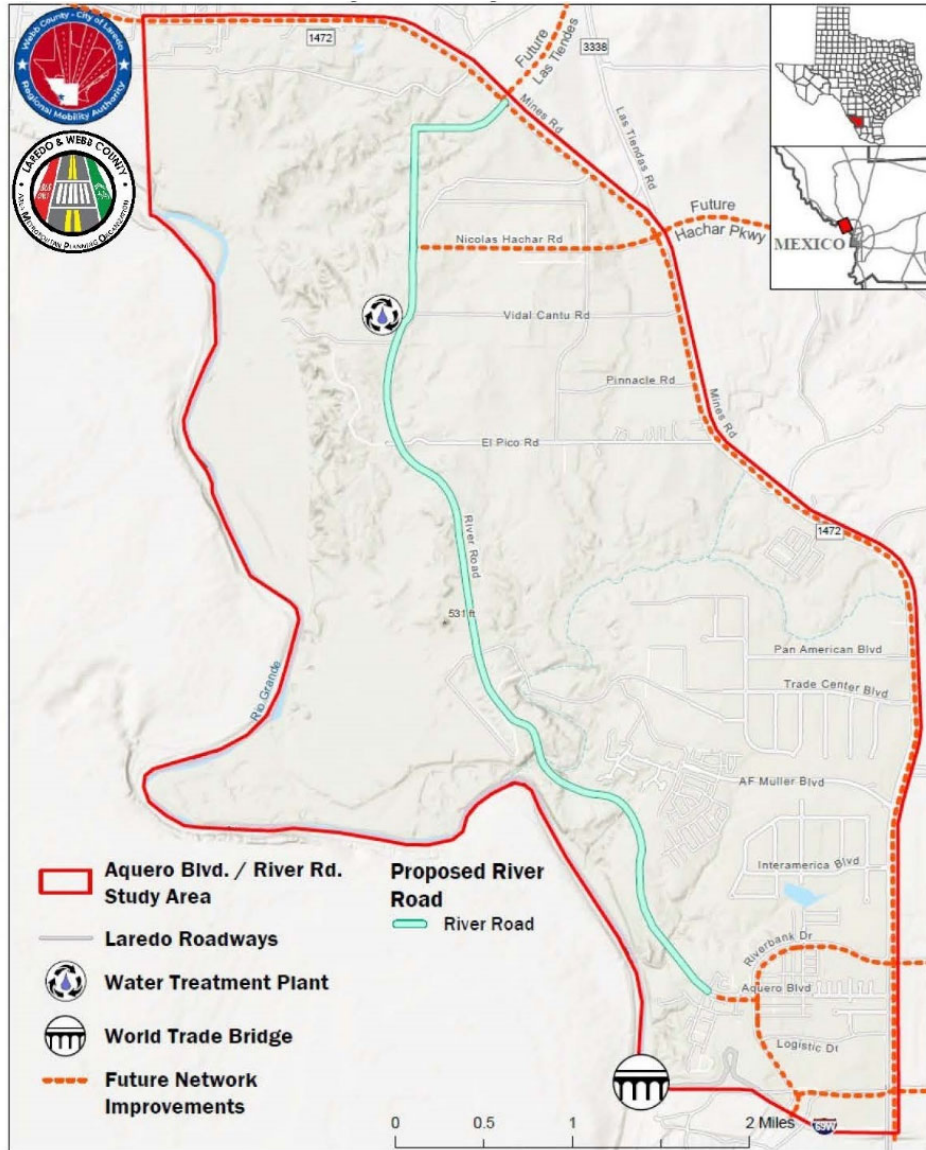


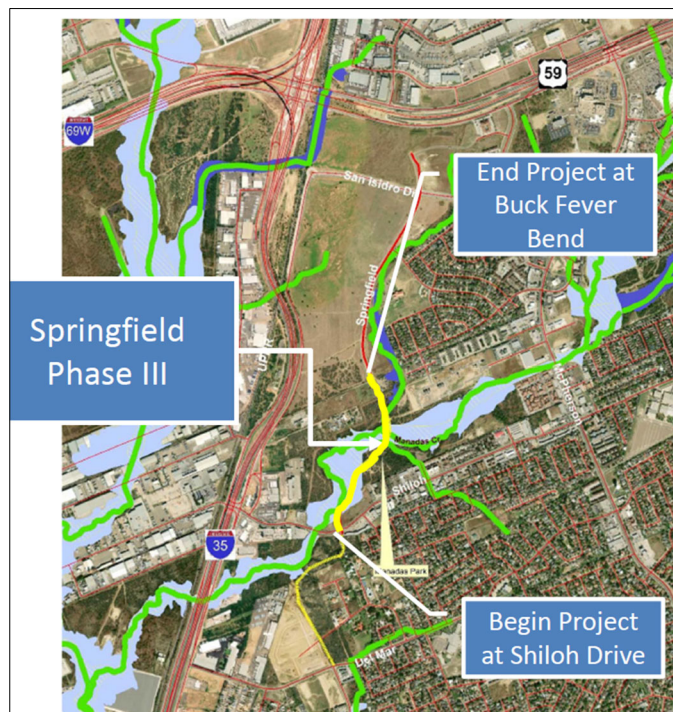
Figure 8 – Location Map





**XII. Springfield Road Extension Project (Phase III) (Completed)** – WC-CL RMA passed a resolution (**Resolution 20-12**) to provide financial support to the City of Laredo in the development and implementation of extending and inter-connecting Springfield Road in north Laredo from Del Mar to US 59 in July 2020. The WC-CL RMA approved a resolution (**Resolution 21-11**) to execute an Inter-Local Agreement with the City of Laredo to provide up to **\$2,000,000** for the construction of the project. The City of Laredo designed the project and led the development of the project. The project included a 3,170 linear foot extension with five (5) lanes of nine (9)-inch concrete pavement. Other important project items include the installation of a traffic signal at the intersection of Shiloh and Springfield, pavement markings, landscaping, and a 12-foot-wide sidewalk for cyclists and pedestrians to share on both sides of the road. The subsurface infrastructure includes storm drainage structures and a water distribution system. The project was advertised for construction in July 2021. It was awarded to AZAR Services, LLC for a contract amount of **\$4,206,702.55**. The WC-CL RMA funded **47.5% of the construction contract amount**. NTP for construction was provided in December 2021. The project was opened to traffic on August 2, 2023.

**Figure 10- Springfield Road Phase III Extension**





**XIII. North Laredo Webb County Transportation Planning Study (Completed)** - The RMA completed a long-term transportation study for mobility improvements in North Webb County from Loop 20 to Camino Columbia along FM 1472 to remove the current and future congestion on FM 1472 in 2020. The WC-CL RMA took action to develop the Study on May 07, 2018 (**Resolution 18-10**). The Study provided a clear assessment of mobility conditions in North Laredo and to provide a roadmap for growing the transportation network that can meet increasing mobility demands into the future. The goals of the study were to:

- Identify feasible projects that will help relieve congestion impacts in North Laredo
- Promote safety for all uses of the transportation network.
- Coordinate implementation and planning efforts comprehensively with International Bridge, Port-of-Entry logistics and the Freight Network.
- Coordinate private land development and public investments in mobility infrastructure.
- Promote efficient movement of goods while reducing impacts of freight operations on neighborhoods and sensitive land.
- Improve overall transportation network connectivity and resiliency in North Laredo.

The study process included public input in the form of stakeholder meetings and public meetings, planning, and engineering to define and evaluate transportation solutions for the development of an ultimate implementation plan that will have a list of project priorities for the community to program and execute over the next 20 years. Total estimated cost of the Study was \$634,421. Funding for the study consisted of both federal and local vehicle registration fees monies. Eighty percent of the study was funded by the Coordinated Border Infrastructure (CBI) money which is federal money that is supervised by the Texas Department of Transportation (TxDOT). The remaining twenty percent was funded by the Webb County Vehicle Registration Fees which is supervised by the WC-CL RMA. Below was a breakdown of the funding for the study:

1. TxDOT = \$507,538.80
  2. WC-CL RMA = \$126,884.20
- Final Study Cost at Completion = \$608,429.57**



Upon its completion, the study was forwarded to the Laredo MPO Executive Director and staff, the TxDOT-Laredo District, the City of Laredo City Engineer, the Webb County Engineer, the Honorable Mayor Pete Saenz, the Honorable Council Member George Altgelt, the Honorable Judge Tano Tijerina, the Honorable Commissioner Cindy Liendo, the Honorable State Representative Richard Raymond, the Honorable State Representative Tracey King, the Honorable State Senator Judith Zaffirini and the Honorable Congressman Henry Cuellar.

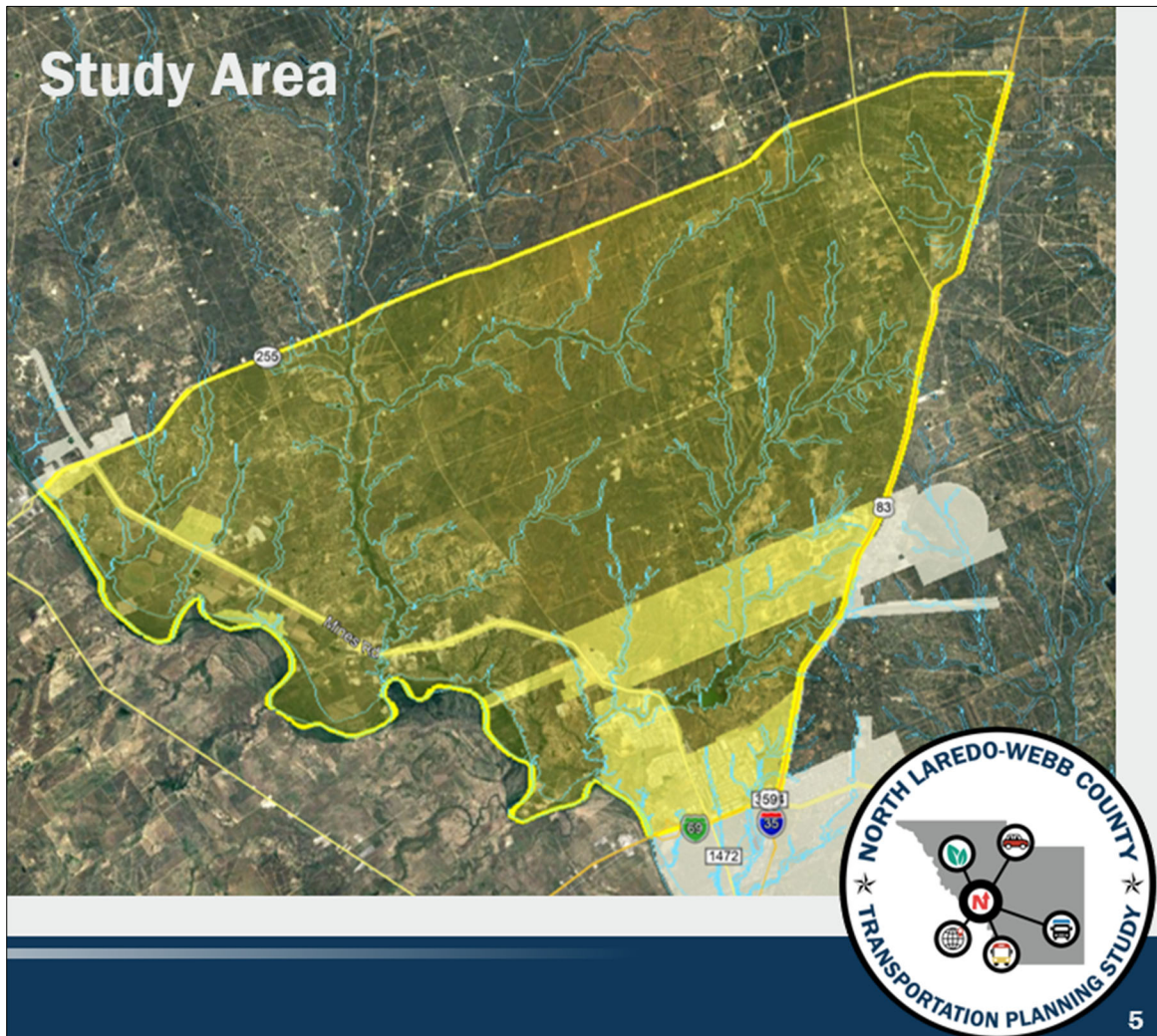


Figure 11 – Study Area



**XIV. WC-CL RMA Plans for 2026 and Beyond (Including, but not limited to the following)**

- A. Vallecillo Road
  - 1. Vallecillo overpass at Vallecillo Rd and IH35
  - 2. Vallecillo Direct Connectors/ Overpass with dedicated right turn lanes
    - North bound FM 1472 to East bound Vallecillo
    - South bound/ Overpass with dedicated left turn lanes from FM1472 to East Bound Vallecillo
  - 3. Vallecillo Loop from IH 35 to SH59 - Possible expressway/ freeway section (main lanes and frontage roads)
- B. Loop 20 (Cuatro Vientos)
  - 1. Southern Extension from Mangana Hein Road to US 83
  - 2. Overpasses at main intersecting roadways along Cuatro Vientos (Lomas del Sur, Sierra Vista, Cielito Lindo)
  - 3. Extend Loop 20 (Cuatro Vientos) South of US 83 to intersect with the Future Outer Loop and the International Bridge 4/5.
- C. FM 1472 (Mines Road)
  - 1. Mines Road – Consideration for Business IH-35
  - 2. FM 3338 Improvements and connections to FM 1472 and SH255
  - 3. Extension of Mines Road to Eagle Pass
- D. Proposed application to the LWCAMPO Carbon Reduction Program for the construction of a shared use path along Riverbank Drive in northwest Laredo.
- E. International Bridge 4-5 – monitor on-going dialog between Webb County, developer, and City of Laredo for development and operations of this Bridge.
- F. IH-35 at Mile Marker 13 (Unitec Overpass and area Roadways)
- G. Hachar Road
  - 1. Hachar Rd. Direct connectors: North bound FM 1472 to East Bound Hachar Rd., South bound FM1472 to East Bound Hachar
- H. Outer Loop - Construction of the Outer Loop, from US 83 in southern Webb County to Camino Colombia north of Laredo with priority emphasis on the segment from Hwy 59 to Hwy 359.
- I. Rail Improvements
  - 1. New International Rail line aligned crossing Bridge 4/5 and aligned with Outer Loop (East Rail By-Pass)
  - 2. Improvements to existing at grade crossings and potential future route for hyperloop/express rail for passenger/light freight.



- J. Ports to Plains
  1. Improvements (widening) to Hwy 83 to Eagle Pass & Del Rio and to I27
  2. Connectors/interchanges at SH255 and Hwy 83
  3. Ports to Ports (IH 69 to the Ports of Corpus Christi and Houston)
- K. Bridge Operations
  1. Increase use of automation and dynamic scanning to increase freight movement.
  2. Best practices at ports should be shared with others.
- L. Technology
  1. Lanes dedicated to autonomous vehicles
  2. Integration of 5G network (or newer) with autonomous vehicles and traffic signalization
- M. LECHE Road Project
  1. Monitor LECHE's planned roadway project for progress and possible future contribution.

### **Conclusion**

In summary, RMAs have historically been utilized by communities in diverse ways. Due to the broad range of power of RMAs, they have been used as a vehicle for the development of toll roads, to pool the tax bases of multiple pre-dominantly low-to moderate-income Counties to apply for a State Infrastructure Bank Loan, to develop multi-modal solutions for communities, etc. Here in Laredo, the WC-CL RMA can utilize its funding sources to perform studies to help develop new funding opportunities for transportation, and team with its partner agencies to advance priority roadway projects that improve mobility. In that area, the WC-CL RMA works to develop local roadway projects and make them shovel ready for future funding from the state and federal sources. In recent years, the WC-CL RMA has also functioned as a bridge in project delivery between Webb County, the City of Laredo, TxDOT, Laredo and Webb County Area MPO, etc. How it is utilized is determined by the WC-CL RMA Board of Directors with advisement from the local leaders of our community.