



December 22, 2023

Mr. Marc Williams  
Executive Director  
Texas Department of Transportation  
125 East 11th Street  
Austin, Texas 78701

Submission of Webb County-City of Laredo Regional Mobility Authority (WC-CL RMA) Project Report Pursuant to 43 TAC §26.65(b)

Dear Mr. Williams:

Attached is a copy of the WC-CL RMA's Project Report for the 2023 Fiscal Year. This Report is submitted in satisfaction of the requirement set forth in 43 TAC §26.65(b).

As the Chair of the Board of Directors of the WC-CL RMA, I hereby certify that the enclosed Project Report is correct.

If you have any questions, please feel free to call me at 956.286.7200 or email me at brown.wccl.rma@gmail.com.

Sincerely,

Jed A. Brown.  
Chair, WC-CL RMA Board of Directors

Attachment

cc: Epigmenio "Epi" Gonzalez, P.E., District Engineer, TxDOT Laredo District  
Sara Garza, Transportation Planning and Programming Division, TxDOT Laredo District



## **2023 PROJECT REPORT**

**By: Antonio Rodriguez, PE, LGPP & Melisa Montemayor, LGPP, LJA Engineering  
WC-CL RMA General Engineering Consultant (GEC) Deputy Program Manager and Program Manager**

**December 22, 2023**

### **Background -**

The Webb County City of Laredo Regional Mobility Authority (WC-CL RMA) was formally petitioned jointly by Webb County and the City of Laredo to the Texas Transportation Commission for its formation on April 15, 2013 (City of Laredo) and August 18, 2013 (Webb County). The Texas Transportation Commission approved the creation of the WC-CL RMA on February 27, 2014.

The WC-CL RMA is unique in Texas as it is the only RMA that was jointly formed by both a City and a County. The WC-CL RMA Board of Directors consists of nine (9) members. Four members of the Board of Directors are jointly selected by City Council Districts 1 and 2, Districts 3 and 4, District 5 and 6 and Districts 7 and 8. Four members of the Board of Directors are individually selected by members of Commissioners Court from each of the four precincts. The ninth member is the Chair of the Board of Directors who is directly appointed by the Governor of the State of Texas. Each Director serves as a volunteer and is not compensated for any of his or her time spent in service on the Board of Directors. Furthermore, no Director can have any financial interest that would benefit from the actions of the WC-CL RMA.

Since its formation, the WC-CL RMA Board was entrusted to organize the agency which entailed hiring consultants, developing policy, holding meetings, and filing regulatory annual and periodic reports, including the annual audit. In the last three years the WC-CL RMA has become involved in roadway construction projects throughout the community along with roadway studies and reports. The progress of those projects and future projects will be described later in this report.

The single revenue source for the WC-CL RMA is from the \$10 fee per vehicle registered in Webb County which was approved by the 83<sup>rd</sup> Texas Legislature to fund long-term transportation projects of a regional mobility authority. With these monies, the WC-CL RMA has been able to perform its role in developing solutions for helping to advance mobility priorities for Webb County and the City of Laredo. It should be noted that, at this time, the WC-CL RMA does not have any paid employees or facilities from which to conduct its business; however, it does have operating expenses. It is anticipated that a Project Coordinator position will be filled as a paid employee of the WC-CL RMA in the coming years. TxDOT and other entities such as IBC Bank have provided their facilities and resources for WC-CL RMA Board meetings.



According to the financial summary reported to the Board of Directors at the December 2023 meeting, the WC-CL RMA has an asset balance of **\$12,022,176.31**. The WC-CL RMA also has been granted \$8.95 million of Category 12 – Strategic Partnership funds from TxDOT that is dedicated specifically for the construction of roadway projects.

The members of the Board of Directors are the following:

1. Chairman of the Board of Directors – Mr. Jed A. Brown
2. County Precinct No. 1 Director – Mr. Tony Arce, Jr.
3. County Precinct No. 2 Director – Mr. Oscar O. Lopez, Treasurer
4. County Precinct No. 3 Director – Mr. George Beckelhymer
5. County Precinct No. 4 Director – Ms. Diana Palacios
6. City District 1 & 2 Director – Mr. Jose Murillo
7. City District 3 & 4 Director – Mr. Alfonso Mendiola
8. City District 5 & 6 Director – Mr. Douglas B. Howland, Vice Chair
9. City District 7 & 8 Director – Mr. Arturo Dominguez, Secretary



## WC-CL RMA Projects:

1. **Primary Proposed Project - Vallecillo Road, from FM 1472 to the IH-35 Southbound Frontage Road (February 2015 to Present)** - The Laredo MPO Policy Committee requested that the RMA develop this new location roadway in early 2015, to assist in alleviating congestion on FM 1472. Improvements will consist of the installation of a 5-lane roadway with curb, sidewalk, and utilities for a total length of 2.85 miles. The project limits begin at the eastside of the intersection FM 1472 and Muller Memorial Blvd. and will extend approximately 2.85 miles to the East and terminate at the southbound frontage road of IH 35. WC-CL RMA passed **Resolution 20-16** to participate in the development of the project on August 28, 2022.

The implementation of this project will provide an alternate route for traffic from the World Trade Bridge area to IH 35 which will improve congestion along the currently, highly congested FM 1472. The implementation of this project will also provide a direct egress route for those living in the La Bota Ranch Subdivision and others in residential areas north of Muller Memorial Blvd. This roadway and infrastructure complementing its connection to IH 35 also opens prime property for industrial development and leads to possible future developments east of IH 35.

As the lead agency on the project and to develop an understanding of the cost and scope of it, the WC-CL RMA conducted preliminary environmental studies, as well as the development of a preliminary geometric schematic of the project. The WC-CL RMA also implemented and completed both traffic and geotechnical studies in 2020. The **total project cost** (including the value of the donated ROW which is roughly \$10 million) for the implementation of Vallecillo Road is **\$49,989,762.00**. The current **total construction cost** of the project, without utilities, is **\$31,087,999.00**.

The WC-CL RMA investigated multiple avenues to generate capital for the implementation of the project through local, state, and federal sources and was successful in attaining full project funding. Project partnership with dedicated financial and right of way resources have advanced to a critical point, with backing having been pledged from the WC-CL RMA through Category 12 funds and Vehicle Registration Fees, City of Laredo, Killam Company including the donation of land, Category 7 funds through the LWCAMPO and a federal appropriations earmark made possible by Congressman Henry Cuellar through the U.S. Department of Housing and Urban Development Community Project Funding program for a total amount of \$52,329,088.00 dedicated to the road project.



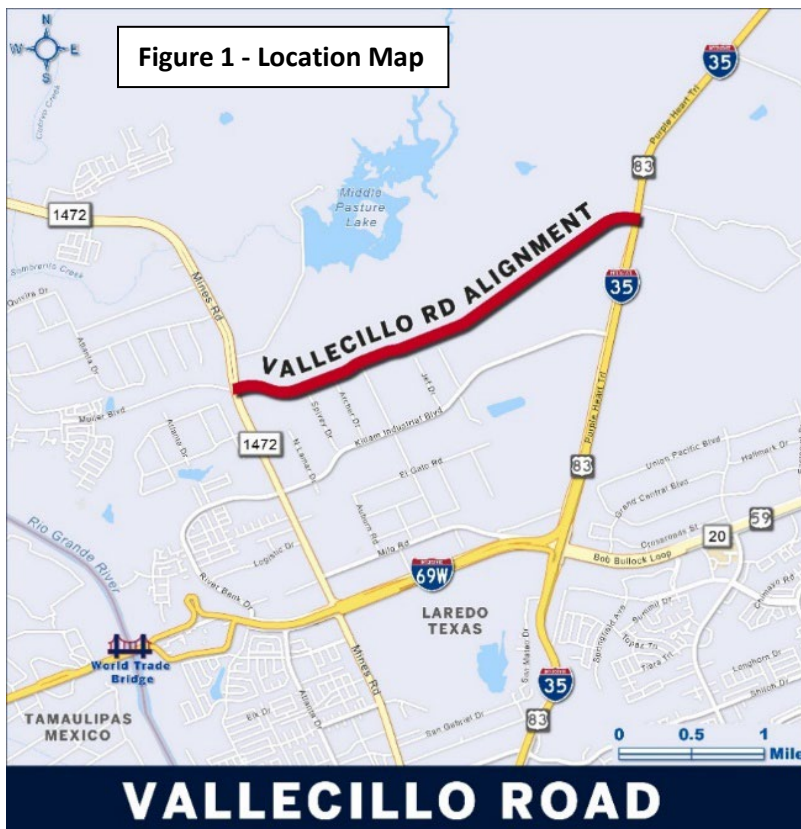
<b>Project Cost and Funding Breakdown</b>		
<b>Project Components</b>	<b>Cost</b>	
Engineering (WC-CL RMA) (Schematic, Environmental, PS&E & CEI)		\$5,258,432
Right-of-Way (Killam Company)		\$10,000,000
Construction (w/o Utilities) (w/ inflation to 8/30/2025)		\$31,087,999
Utilities (Assume Water & Sewer - No Telecom, Gas, Electric) (w/ inflation to 8/30/2025)		\$3,643,331
<b>Total Project Cost</b>		<b>\$49,989,762</b>
<b>Public/Private Partnership Project</b>	<b>Funding</b>	
Webb County-City of Laredo Regional Mobility Authority	11.8%	\$6,180,529
*City of Laredo (Construction and Utility)	16.5%	\$8,643,331
**Killam Company (including Right-of-Way)	31.9%	\$16,692,636
***Category 10 Federal Community Project Funds	5.7%	\$3,000,000
***Category 7 LWCAMPO Project Funds	34.0%	\$17,812,592
<b>****Vallecillo Funding Partnership</b>	<b>100%</b>	<b>\$52,329,088</b>
*Funds includes \$5M dollar commitment to road construction and estimated water and sewer utility cost.		
** ROW is expected to be clean without any structures, easements, or liens in the donation.		
*** Funding requires Local Match (20% for Category 10 and 5.8% for Category 7 funds).		
**** Partnership funding includes \$1,633,133 for Local Match of Category 7 and Category 10 Funding.		

These commitments have been codified via an Inter-Local Agreement between the WC-CL RMA and the City of Laredo, executed on September 18, 2020 (**Resolution 20-17**). It has also been codified via a Memorandum of Understanding between the WC-CL RMA and the Killam Company, executed on October 2, 2020 (**Resolution 20-18**).

The private-public team approached members of the Texas Transportation Commission to request the remaining balance in the funding gap which equated to 42.6% of the total project cost in financial assistance from TxDOT to finalize the funding plan for the project and ultimately take over Vallecillo Road and as on-system State roadway. During these efforts, United States (US) Congressman Henry Cuellar committed \$3,000,000 to the project which reduced the request to the State of Texas. With support from US Congressman Cuellar, State Senator Judith Zaffirini, State Representative Richard Raymond, State Representative Tracy King, and former Laredo Mayor Pete Saenz, Chairman Brown led a series of delegations to Austin, TX. The first meeting with Transportation Commissioner Alvin New took place on June 22, 2022. A follow up meeting with TxDOT Executive Director Marc Williams occurred in early August 2022. In both in-person meetings TxDOT was presented details of the project along with a request for assistance to resolve the funding gap in the 2022 Unified Transportation Plan (UTP).



Funding for the project was not included in the draft UTP, but after extensive meetings and negotiations, Vallecillo made the final UTP with a local commitment to construct the roadway and a TxDOT leadership and Transportation Commission commitment to construct a future overpass that would cross the IH 35 Corridor to allow for the continuation of Vallecillo Road to the East to ultimately reach US 59. With this commitment, the Laredo and Webb County Metropolitan Planning Organization (MPO) passed a resolution to advance \$16,500,000 in Category 7 funds to the project which effectively resolved the funding gap. The LWCAMPO later appropriated an additional \$1,312,592 million dollars in Category 7 funding to provide for the construction and made the appropriate revisions to the 2020-2045 MTP.



Moving forward as the project sponsor, the WC-CL RMA executed an Advanced Funding Agreement with TxDOT for the use of the Category 7 funds from the MPO and the use of part of the \$8.95 million of Category 12 – Strategic Partnership funds. The WC-CL RMA is currently developing the project schematic, conducting environmental studies for the clearance through an Environmental Assessment with TxDOT, development of the Plans, Specifications and Estimate and anticipates advertising the project construction in late

August 2025 and begin constructing the project in early 2026. Construction completion is anticipated for the Summer of 2027.



**II. FHWA Safe Streets and Roads for All (SS4A) Vision Zero Webb Laredo Safety Action Plan Development (August 2023 to Present)** – In partnership with the LWCAMPO and the City of Laredo, the WC-CL RMA developed a \$2M grant application to develop a safety action plan to prevent roadway deaths and serious injuries. The total cost for the development of the grant application was \$25,318. The cost of the application was equally shared between the City of Laredo and the WC-CL RMA with each partner committing to pay \$12,659 to cover the cost of the application. The WC-CL RMA committed to developing, sponsoring, and submitting the grant application on July 20, 2022 (**Resolution 22-19**).

On January 30, 2023, the WC-CL RMA was informed by US Congressman Henry Cuellar’s Office that the grant was approved for \$1.6M in federal funds, with a \$400,000 local match requirement, for a total of \$2M. A formal announcement by Congressman Cuellar was held at City Hall on February 21, 2023. The WC-CL RMA submitted the draft Grant Agreement to the Federal Highway Administration (FHWA) and it was executed on August 3, 2023. The WC-CL RMA and the City of Laredo executed an Inter Local Agreement for the sharing of the local funding match for the grant on September 7, 2023.

The intent of the grant is to establish a comprehensive safety action plan with the goal of developing a holistic, well-defined strategy to prevent roadway fatalities and serious injuries within Webb County, Texas. The Safety Action Plan will expand upon previous plans, new research, and public input to develop a plan that:

- Promotes safety
- Employs low-cost, high-impact strategies that can improve safety
- Ensures equitable investment in an underserved community
- Incorporates evidence-based safety countermeasures into projects and strategies; and
- Aligns with United States Department of Transportation’s (USDOT) mission and priorities.

The tasks associated with delivery of the Safety Action Plan consist of the following:

Project Management	\$254,498.00
Equitable Engagement and Collaboration	\$561,535.00
Data Collection and Analysis	\$221,830.00
Policy and Process Changes	\$47,939.00
Equity Analysis	\$146,788.00
Strategy and Project Selections	\$538,437.00
Other Direct Expenses	\$78,967.00
<b>Total</b>	<b>\$1,849,994.00</b>



This leaves \$150,006 of the \$2M SS4A grant funds available for activities that are eligible for reimbursement from FHWA and supportive of Safety Action Plan implementation that must be expended by August 1, 2025.

The Study effort commenced in September 2023. Activities performed in September include mobilizing the team, data collection, and some preliminary analysis. Activities performed in October included preparation for public engagement and initial data cataloging and cleanup. November activities included assembling a Vision Zero Working Group and Safe Transportation Advisory Council (STAC), completing the initial project website and beginning the safety and equity analyses. The WC-CL RMA Board has identified Board member Arturo Dominguez to chair the STAC representing the Board of Directors during development of the Safety Action Plan. Analysis is expected to be completed in January 2024 and initial committee meetings will begin in preparation for a public commitment to Zero fatalities and severe injuries by 2040, and the first round of public engagement expected to occur in February 2024. The Study effort is expected to conclude in October 2024 with final delivery of the Vision Zero Webb Laredo Safety Action Plan anticipated in December 2024. As the Safety Action Plan is developed during 2024, additional eligible tasks that support implementation of the Safety Action Plan will be brought to the WC-CL RMA Board of Directors for consideration to access the remaining \$150,006 of SS4A grants funds as appropriate.

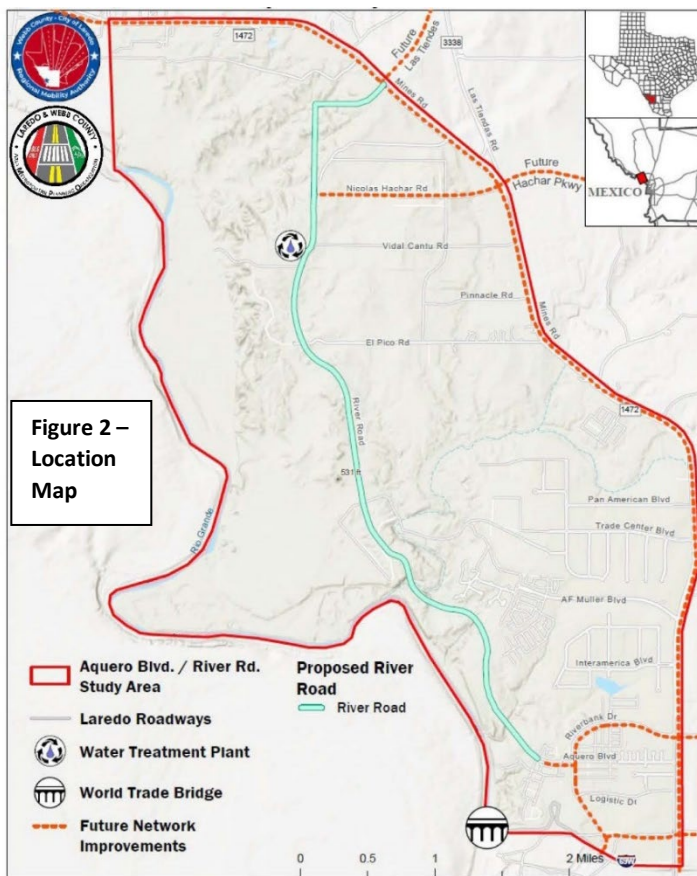
- III. River Road from Aquero Blvd. to FM 1472 Implementation Study (Completed)** – The WC-CL RMA commenced an alignment study for a new location roadway called River Road from Aquero Blvd. to FM 1472. This is a follow-up action item to the North Laredo Webb County Transportation Planning Study which is the **Master Plan for the North Area of the community**. The study area limits spanned from North of IH 69-W to SH 255 and is bounded by the Rio Grande to the West and IH 35 to the East and provided a list of projects to implement from 2021 to 2040 that would improve mobility in that entire region. The River Road Corridor project was one of the identified projects and this alignment study is part of the project development time frame that was described in the North Laredo Webb County Transportation Planning Study. River Road is a new location roadway in north Laredo and will ultimately serve as a relief route for passenger vehicle traffic by-passing FM 1472 from approximately IH 69W to FM 3338.

The alignment study developed a final alignment of River Road and determined the traffic benefits for the surrounding area. The study investigated two (2) possible alignment routes and a No-Build option. It entailed the following components:





- Alignment will be developed with stakeholder (Private Landowners, City of Laredo, Webb County, LPD, LFD, UISD, CBP, etc.) input via workshops and public meetings
- Environmental Constraints Mapping and Analysis to identify areas of concern to avoid in the alignment (archaeological, biological, cultural, waters of the US, etc.).
- Traffic Analysis to determine the benefits of the movement of traffic to the surrounding roadways such as FM 1472, Killam Industrial Blvd., Riverbank Road, etc.



**Figure 2 –  
Location  
Map**

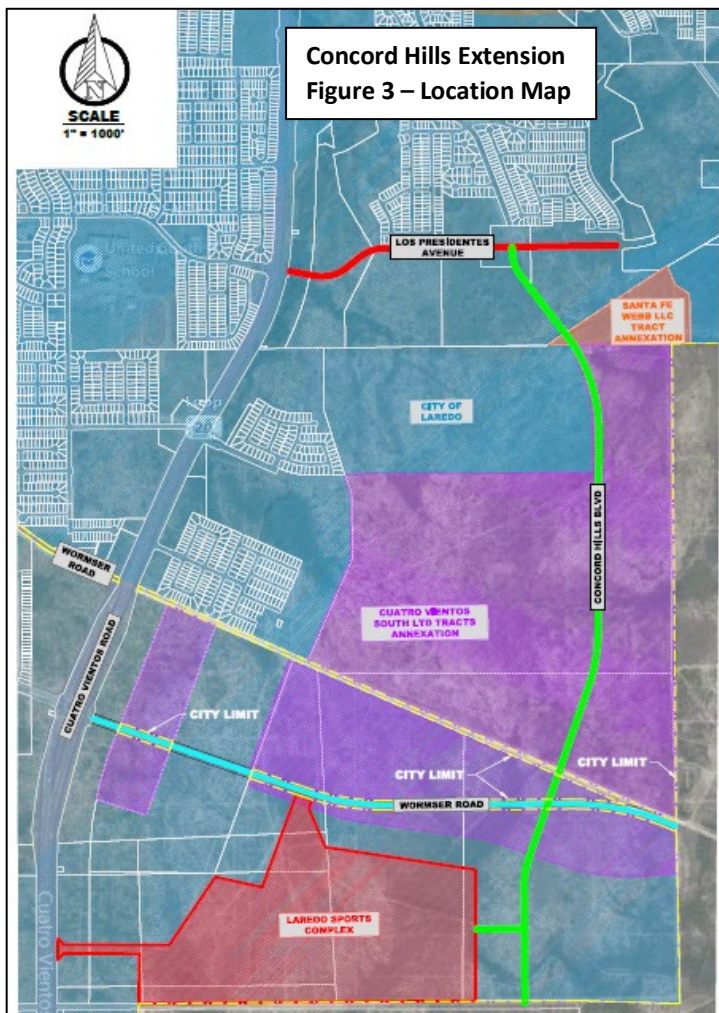
The cost of the study is \$250,000 and was jointly funded by the WC-CL RMA Vehicle Registration Fees and Laredo and Webb County MPO FHWA planning monies. The total duration of study was 10 months. Work on the study commenced in July 2022 and was completed in May 2023. The next steps for the project would consist of the following activities:

- Acceptance of Locally Preferred Alternative by WC-CL RMA Board, LWCAMPO Policy Committee and Laredo City Council by resolution
  - Coordination between WC-CL RMA, City of Laredo, property owners and developers with interest in River Road
  - Formalized partnerships among all participating parties
  - Programming of funding for Schematic and Environmental
- Project scoping and initiation of Environmental
  - Completion of Schematic including environmental mitigations
  - Public comment on Environmental findings
  - Completion of Environmental allowing for property acquisition
  - Identification of all funding for PS&E and Construction



**IV. Concord Hills Extension from Los Presidentes to Wormser Road/ Lomas Del Sur (Future Project)**

– Similar to the Los Presidentes project, at the request of the City of Laredo, the WC-CL RMA will lead the design and construction of a new location 1.3 mile, 2-lane minor arterial roadway extension from Los Presidentes to Wormser Road/ Lomas Del Sur within a nominal ROW width



of 90’ in partnership with the City of Laredo. The project will provide a parallel route to Cuatro Vientos and provide additional access to the new Laredo Sports Complex and the Municipal Water Park. The WC-CL RMA passed a resolution to support the development of the project on March 25, 2022 (**Resolution 22-13**). The WC-CL RMA will contribute \$1.0M to this project, in addition to taking the lead in design and oversight (**Resolution 22-35**).

The bid advertisement and construction of the project will be conducted by City of Laredo staff. The project is located within the City of Laredo Limits except at two crossings (Old Wormser Road & Wormser Road realignment). The sponsorship and implementation are subject to the negotiation of an interlocal agreement between the City and the RMA. Both parties are

currently working to finalize the construction cost estimate and the agreement for the project.

**V. Springfield Phase I, II and Phase IV (Future Project)** – Similar to Springfield Phase III, the WC-CL RMA passed **Resolution 22-37** to approve \$1M in construction funding for the City of Laredo to construct 2 additional phases of the Springfield Avenue Corridor.



Phase II of the project will extend from International Blvd. to Shiloh Drive and construction cost is estimated at \$5.2M. Phase IV of the project will extend from North of San Isidro Parkway to US 59 (Bob Bullock Loop) and the estimated construction cost is approximately \$1.0M. The WC-CL RMA is working with the City of Laredo to update the construction costs and finalize an interlocal agreement.

### Springfield Road Phase I, II, III and IV Extension



- VI. **Springfield Road Extension Project (Phase III) (Completed)** – WC-CL RMA passed a resolution (**Resolution 20-12**) to provide financial support to the City of Laredo in the development and implementation of extending and inter-connecting Springfield Road in north Laredo from Del Mar to US 59 in July 2020. The WC-CL RMA approved a resolution (**Resolution 21-11**) to execute an Inter-Local Agreement with the City of Laredo to provide up to **\$2,000,000** for the construction of the project.



The City of Laredo designed the project and led the development of the project. The project included a 3,170 linear foot extension with five (5) lanes of nine (9)-inch concrete pavement. Other important project items include the installation of a traffic signal at the intersection of Shiloh and Springfield, pavement markings, landscaping, and a 12-foot-wide sidewalk for cyclists and pedestrians to share on both sides of the road. The subsurface infrastructure includes storm drainage structures and a water distribution system. The project was advertised for construction in July 2021. It was awarded to AZAR Services, LLC for a contract amount of **\$4,206,702.55**. The WC-CL RMA funded **47.5% of the construction contract amount**. NTP for construction was provided in December 2021. The project was opened to traffic on August 2, 2023.

### Springfield Road Phase III Extension

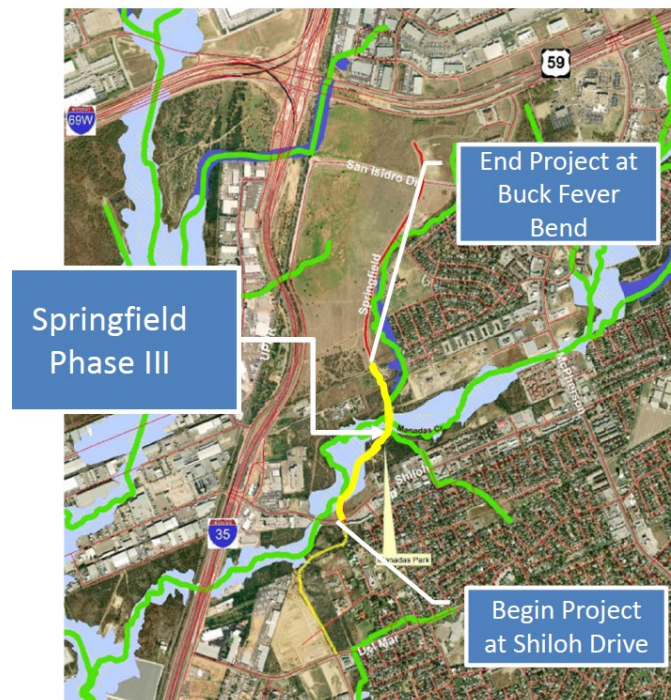


Figure 5 – Location Map

- VII. **Loop 20 South Transportation Reinvestment Zone (TRZ) Study and Update Study from US 59 to The Rio Grande River (Completed)** – In 2018, the WC-CL RMA commissioned its GEC to perform a TRZ Study for the advancement of Loop 20 South from US 59 to US 83 to upgrade the existing rural divided facility to a controlled access freeway facility with a direct connection to the future Port of Entry, International Bridge 5. The study was conducted in partnership with the GEC's consultant team, TXP.



The 2018 study was a follow-up to City Council action taken on 9/18/2017. City Council requested that the WC-CL RMA perform a 2-mile wide TRZ study along Loop 20 South that would extend from US 59 to the Rio Grande. The study focused on the performance of a possible 2-mile wide TRZ. The study focused on the following major tasks:

- Economic & Real Estate Assessment of the Loop 20 Area.
- Collect and Analyze Webb County Appraisal District Data.
- Establish a Loop 20 TRZ Preliminary Tax Revenue Forecast.
- Create 30 Year Tax Revenue Forecast.

The results of the 2018 study developed a 30-year revenue projection using the following 3 scenarios:

- Scenario 1 is based the most recent five-year pattern of residential building permits within the TRZ buffer area to project household growth. TXP held the countywide ratio of population to employment constant for 30 years.
- Scenario 2 combines the Laredo MPO TAZ forecast data with estimated home value based on stakeholder feedback. The consensus was south Laredo would begin attracting a more expensive housing product than in the past. This scenario assumes a new home is taxed at \$125,000 (\$2017).
- Scenario 3 uses the Laredo and Webb County MPO Travel Demand Model forecast, but the starting residential value for new units is based on the existing 2017 average value of roughly \$100,000 for the buffer area (house plus land). This reflects uncertainty over how many mobile home units will be attracted to this area and the tax law about whether the mobile home is treated as real or personal property.

TRZ Allocation (\$ Millions)					
	10%	20%	30%	40%	50%
<b>Scenario 1</b>					
Total	\$26.7	\$53.4	\$80.1	\$106.8	\$133.5
NPV @ 5%	\$9.6	\$19.1	\$28.7	\$38.3	\$47.8
<b>Scenario 2</b>					
Total	\$48.9	\$97.9	\$146.8	\$195.7	\$244.6
NPV @ 5%	\$17.3	\$34.6	\$51.9	\$69.1	\$86.4
<b>Scenario 3</b>					
Total	\$42.0	\$84.0	\$125.9	\$167.9	\$209.9
NPV @ 5%	\$14.8	\$29.6	\$44.4	\$59.2	\$74.0

Based on these scenarios, the Study projects a revenue forecast that ranges from \$133.5 million and \$244.6 million in nominal incremental tax revenue assuming a 50 percent allocation to the TRZ.



The Study was completed in the Summer of 2018 and presented to the Laredo and Webb County MPO. Upon final concurrence by the City of Laredo, the WC-CL RMA will work with the City of Laredo to develop a defined zone for Loop 20 South from US 59 to proposed International Bridge 4/5. The next steps for the study were the following:

- Refine the TRZ boundary to exclude existing developed properties in the north and northwestern portion of the study area.
- Consider extending the TRZ boundary east along State Highway 359 to take advantage of pending projects that would access and utilize Loop 20 improvements.
- Collaborate with landowners on annexation within the study area to capture the increment from new development prior to construction beginning.
- Recalculate the TRZ increment value based on the above and move forward with implementation

The WC-CL RMA was approached by the City of Laredo in the 4<sup>th</sup> quarter of 2021 to partner with the City of Laredo and update the TRZ study for the Cuatro Vientos corridor from Hwy 59 south to the proposed bridge 4/5 location. To respond to the request, the WC-CL RMA hosted a TRZ workshop on December 17, 2021, with attendance from Mayor Pete Saenz, Laredo, and Webb County Area MPO Executive Director Juan Mendive and the City of Laredo Economic Development Director Teclo Garcia to strategize the update of the 2018 Loop 20 South TRZ Study and determine next steps. In May 2022, the WC-CL RMA commenced work on the update of the 2018 TRZ Study for Cuatro Vientos from US 59 to the proposed International Bridge 4/5. The 2022 Study was a joint venture with the City of Laredo.

The results of the 2022 study developed a 30-year revenue projection using the following 3 scenarios:

- Scenario 1 uses the most recent five-year pattern of residential building permits (300 per year) within the TRZ buffer area to project household growth. TXP held the countywide ratio of population to employment constant for 30 years.
- Scenario 2 combines the Laredo MPO TAZ forecast data with estimated home value based on stakeholder feedback. The consensus was south Laredo would begin attracting a more expensive housing product than in the past. This scenario assumes a new home is taxed at \$200,000 (\$2022).
- Scenario 3 uses the TXDOT Travel Demand Model. This model has lower growth through 2045. The starting residential value for new units is based on the existing 2022 average value of roughly \$129,100 for the buffer area (house plus land). This reflects uncertainty over how many mobile home units will be attracted to this area.



The 2022 Study accounted for the following changes that occurred from the 2018 Study:

- Due to 2022 State Legislation, Counties are now able to enact TRZs.
- Tax rates have declined as property values have increased
- Home prices in Study Area have increased substantially
- 2017 = \$125,000
- 2022 = \$200,000
- New master planned developments along Loop 20 will continue to increase traffic.
- The increase in interest rates could dampen demand over the subsequent years; thus, impacting the revenue projection.

Based on these scenarios, the Study projects a revenue forecast that ranges from \$131.8 million and \$354.7 million in nominal incremental tax revenue assuming a 50 percent allocation to the TRZ.

	<b>10% Allocation</b>	<b>20% Allocation</b>	<b>30% Allocation</b>	<b>40% Allocation</b>	<b>50% Allocation</b>
<b><u>Scenario 1</u></b>					
Laredo	\$39,549,655	\$79,099,311	\$118,648,966	\$158,198,622	\$197,748,277
Webb	\$26,366,437	\$52,732,874	\$79,099,311	\$105,465,748	\$131,832,185
<b><u>Scenario 2</u></b>					
Laredo	\$70,936,281	\$141,872,563	\$212,808,844	\$283,745,125	\$354,681,407
Webb	\$47,290,854	\$94,581,708	\$141,872,563	\$189,163,417	\$236,454,271
<b><u>Scenario 3</u></b>					
Laredo	\$58,221,897	\$116,443,794	\$174,665,692	\$232,887,589	\$291,109,486
Webb	\$38,814,598	\$77,629,196	\$116,443,794	\$155,258,393	\$194,072,991

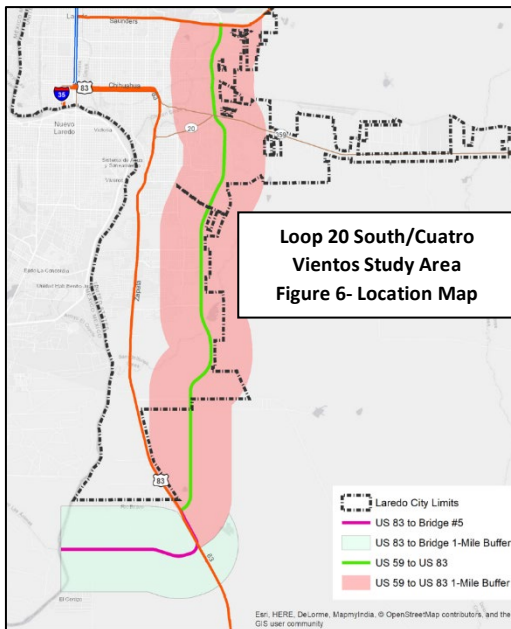
The updated Study was completed on 10/31/22. The WC-CL RMA provided a presentation of the study to the City of Laredo on 11/7/2022. Upon final concurrence by the City of Laredo, the WC-CL RMA will work with the City of Laredo to develop a defined zone for Loop 20 South from US 59 to proposed International Bridge 4/5.



The next steps for the 2022 study are the following:

- Refine the TRZ boundary to exclude existing developed properties in the north and northwestern portion of the study area.
- Collaborate with landowners on annexation within the study area to capture the increment from new development prior to construction beginning.
- Recalculate the TRZ increment value based on the above and move forward with implementation

Utilizing the data from the 2022 study, the WC-CL RMA hosted two Transportation Reinvestment Zone workshops together with local elected officials, including Mayor Dr. Treviño, Mayor Pro Tempore, Council Member Vanessa Perez, and Council Member Alyssa Cigarroa; Gilbert Gonzalez; Dr. Tyler King; and Melissa Cigarroa.



The members of the RMA board collaborated with its team of consultants, specifically economist, Travis James of TXP and Brian O'Reilly of Locke Lord. Data shown informs decisions for the present and impacts the future of funding for transportation projects in Laredo, Webb County, Texas. Between the two workshops, one in July and another in August 2023, staff from the City of Laredo Economic Development, Fire, City Managers, Traffic, Planning, Bridge, Airport, Budget, and the Laredo-Webb County Area Metropolitan Planning Committee were present during the workshops. Additionally, members of the WC-CL RMA innovative financing committee, Robert Morris, and partner organizations from the private sector, including representatives from Crane Engineering and Killam Development,

attended. The City of Laredo officials stated that they would be considering implementation and are looking to the next steps in the process. The Webb County-City of Laredo RMA will continue collaborating with City staff and officials to assist and have pledged funding to initiate the possible study for north Laredo.





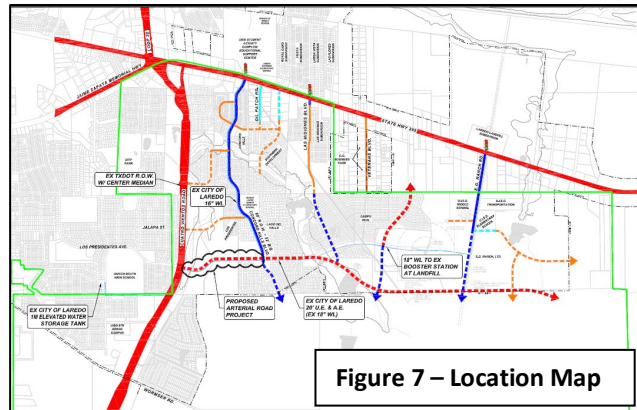
- VIII. North Laredo Area Transportation Reinvestment Zone (TRZ) Study (August 2023 to Present)** – The City of Laredo City Council has asked the WC-CL RMA to work in partnership to perform a TRZ Study in the North Laredo Area. The actual limits and the possible alignment of the TRZ have not been established and is still under discussion with the City of Laredo. The WC-CL RMA board approved **Resolution 23-09** on August 1, 2023 to negotiate and enter into an interlocal agreement with the City of Laredo and has committed to funding up to 50% of the study cost. The WC-CL RMA conducted a TRZ Workshop to the City of Laredo on July 19, 2023 and August 28, 2023. The City of Laredo and the WC-CL RMA are developing and Inter Local Agreement to codify the share of the funding cost for the development of the Study.
- IX. Los Presidentes Phase 1 and Phase 2A from Loop 20 South (Cuatro Vientos) to Brownwood Street (Completed)** – WC-CL RMA developed plans, specifications and estimate for the implementation of a new location Modified Major Arterial that extends East from the intersection of Los Presidentes and Loop 20 South (Cuatro Vientos) for a length of 0.85 miles to the intersection of Los Presidentes and Brownwood Street in 2020. Construction of the project let in November 2020 and began construction in 2021, overseen by the City of Laredo. The project also includes an acceleration and deceleration lane on Loop 20 South (Cuatro Vientos) that was let for construction by TxDOT-Laredo District in October 2021. Originally, the City portion of the project extended from Cuatro Vientos to Concord Hills, known as Phase 1. The WC-CL RMA implemented additional project development efforts to extend the limits of the project from Concord Hills to Brownwood Street as part of the overall construction advertisement (**Resolution 20-13, Resolution 20-20, Resolution 20-21, and Resolution 20-22**), known as Phase 2A. The construction contract for Los Presidentes was awarded in January 2021 to MTZ Construction. The current contract amount was \$5,251,710.84 and began construction in March 2021. The TxDOT portion of the project was awarded in October 2021 to Anderson Columbia for \$877,029.58 and commenced construction in **Early 2022**. The project opened to traffic on Wednesday, February 1, 2023, marking an important milestone for this organization being the first major transportation infrastructure investment attaining completion since the WC- CL RMA was established in 2014.



A breakdown of the funding of obligation of the projects is as follows:

- |  |                |
|--|----------------|
| 1. WC-CL RMA =                           | \$2,064,550.00 |
| 2. City of Laredo =                      | \$3,218,110.00 |
| 3. Webb County Drainage District No. 1 = | \$924,700.00   |
| 4. TxDOT =                               | \$877,029.58   |

### Los Presidentes



- X. **Killam Industrial Blvd and FM 1472 Turn Lane Additions (August 2018 to Present)** – The WC-CL RMA developed plans, specifications and estimate for the implementation of proposed right turn lanes on FM 1472 northbound approaching Killam Industrial Blvd. and on Killam Industrial Blvd. westbound approaching FM 1472. Construction of the project let in November 2020 and is being constructed by the TxDOT-Laredo District as part of a larger TxDOT project called FM 1472 from Big Bend to Killam Industrial Blvd. As part of the project development, the WC-CL RMA developed plans, specifications and estimate for the relocation of a 12-inch water line (**Resolution 20-04**). The WC-CL RMA also entered into an Advanced Funding Agreement with TxDOT for construction of the project and inclusion in the larger FM 1472 project (**Resolution 20-07** and **Resolution 20-08**).

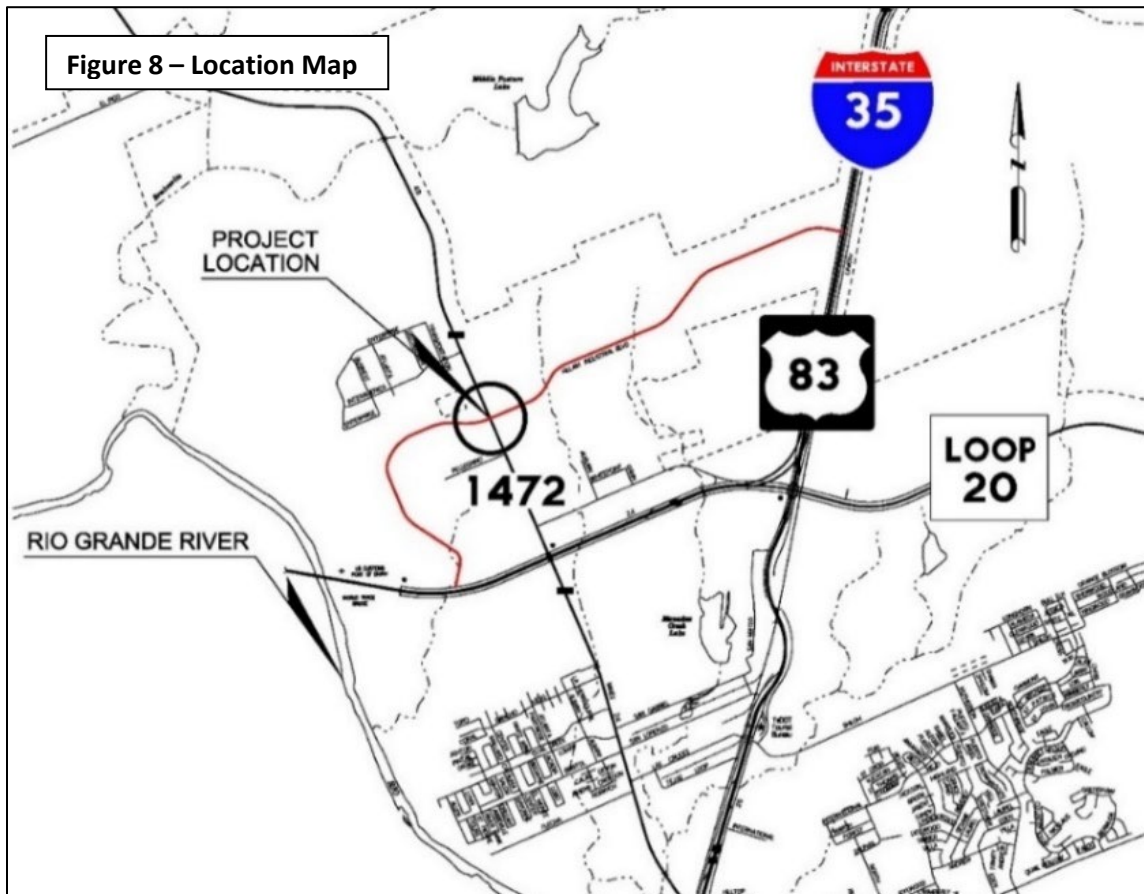
Total cost of the Killam Industrial Blvd. and FM 1472 project was \$2,121,568.80. A breakdown of the funding of the project is below:

- |                            |                |
|----------------------------|----------------|
| 1. WC-CL RMA =             | \$861,408.05   |
| 2. City of Laredo =        | \$1,161,158.75 |
| 3. TxDOT-Laredo District = | \$99,002.00    |



This project began construction in **December 2021**. It is 99% complete and is pending final walk-through, TDLR inspection and final Close-Out Construction Changer Order.

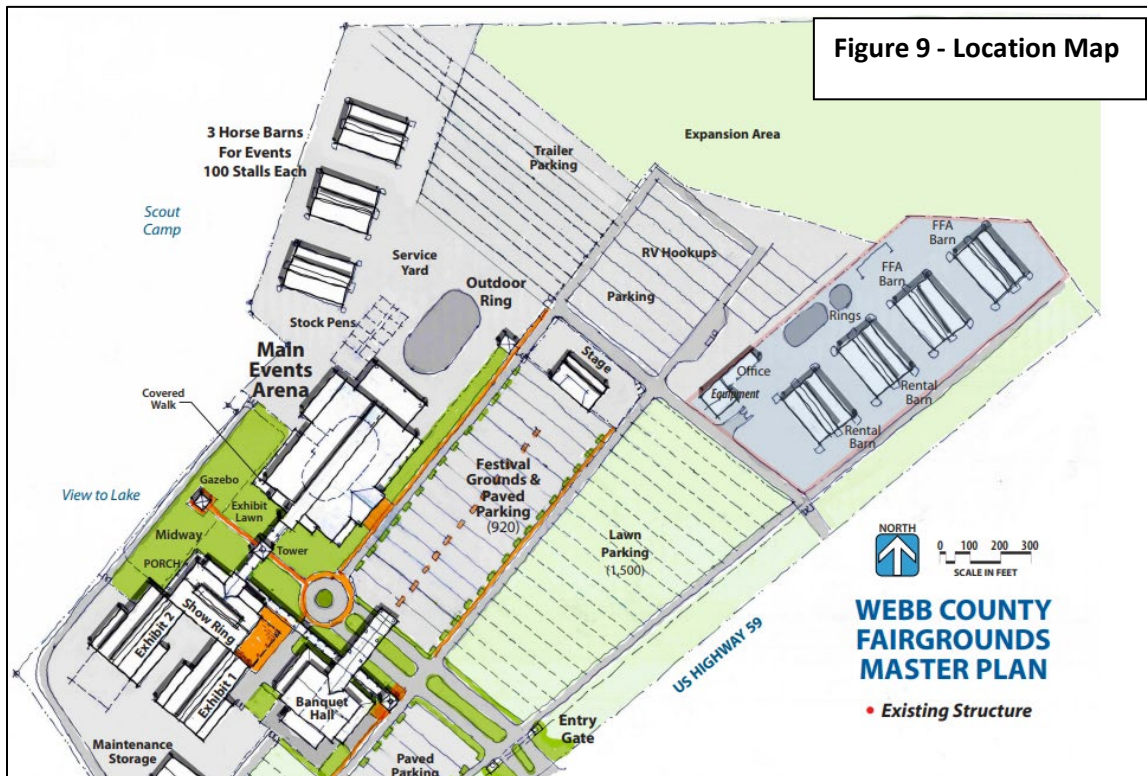
### Killam Industrial Blvd. Turn Lanes Additions





XI. **Webb County Fairgrounds (Life Downs) Master Plan Traffic Study (Completed)** – WC-CL RMA passed a resolution (**Resolution 20-14**) to support Webb County in developing a traffic study to forecast the traffic impacts of the proposed improvements from the recently developed master plan and provide recommendations of traffic operation improvements for the surrounding roadway facilities to mitigate the increase in traffic. The support for the study was increased monetarily on **November 16, 2021 (Resolution 21-13)**. The WC-CL RMA provided **\$69,000 in funding** for the traffic study and performed the study with their consultants. The County revised the master plan for the Fair Grounds in January/ February 2022. The traffic study was completed in February 2023 and submitted to Webb County. The WC-CL RMA is awaiting a request from the County to provide an overview of the Study.

### Webb County Fairgrounds Traffic Study





**XII. North Laredo Webb County Transportation Planning Study (Completed)** - The RMA completed a long-term transportation study for mobility improvements in North Webb County from Loop 20 to Camino Columbia along FM 1472 to remove the current and future congestion on FM 1472 in 2020. The WC-CL RMA took action to develop the Study on May 07, 2018 (**Resolution 18-10**). The Study provided a clear assessment of mobility conditions in North Laredo and to provide a roadmap for growing the transportation network that can meet increasing mobility demands into the future. The goals of the study were to:

- Identify feasible projects that will help relieve congestion impacts in North Laredo
- Promote safety for all uses of the transportation network.
- Coordinate implementation and planning efforts comprehensively with International Bridge, Port-of-Entry logistics and the Freight Network.
- Coordinate private land development and public investments in mobility infrastructure
- Promote efficient movement of goods while reducing impacts of freight operations on neighborhoods and sensitive land.
- Improve overall transportation network connectivity and resiliency in North Laredo.

The study process included public input in the form of stakeholder meetings and public meetings, planning, and engineering to define and evaluate transportation solutions for the development of an ultimate implementation plan that will have a list of project priorities for the community to program and execute over the next 20 years. Total estimated cost of the Study was \$634,421. Funding for the study consisted of both federal and local vehicle registration fees monies. Eighty percent of the study was funded by the Coordinated Border Infrastructure (CBI) money which is federal money that is supervised by the Texas Department of Transportation (TxDOT). The remaining twenty percent was funded by the Webb County Vehicle Registration Fees which is supervised by the WC-CL RMA. Below was a breakdown of the funding for the study:

1. TxDOT = \$507,538.80
2. WC-CL RMA = \$126,884.20
3. **Final Study Cost at Completion = \$608,429.57**



At the completion of the study, the study was forwarded to the Laredo & Webb County Area MPO Executive Director and staff, the TxDOT-Laredo District, the City of Laredo City Engineer, the Webb County Engineer, the Honorable Mayor Pete Saenz, the Honorable Council Member George Altgelt, the Honorable Judge Tano Tijerina, the Honorable Commissioner Cindy Liendo, the Honorable State Representative Richard Raymond, the Honorable State Representative Tracey King, the Honorable State Senator Judith Zaffirini and the Honorable Congressman Henry Cuellar.

### North Laredo Webb County Transportation Planning Study

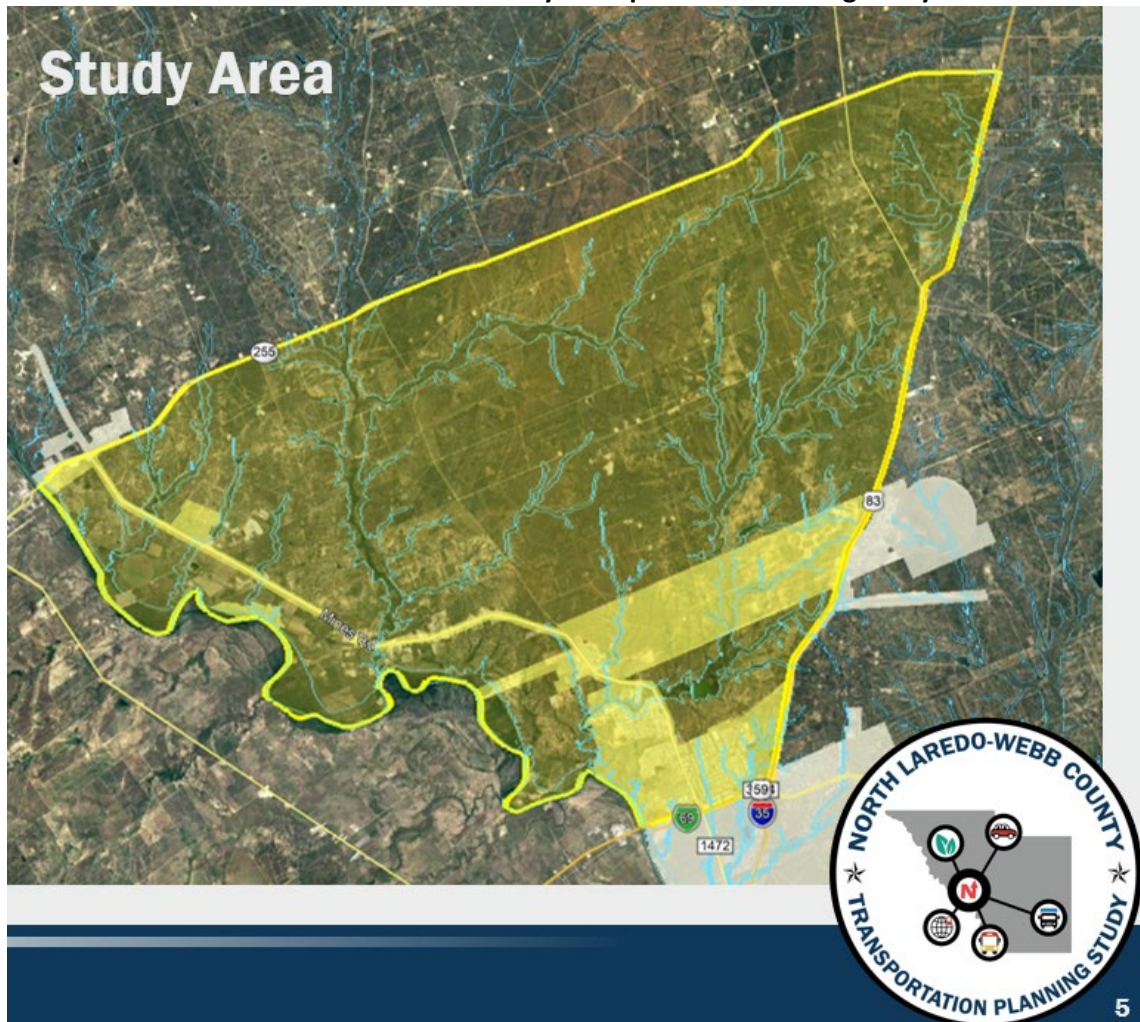


Figure 10 – Study Area



- XIII. WC-CL RMA Plans for 2024 and Beyond (Including, but not limited to the following)**
- A. Vallecillo Road
    - 1. Vallecillo overpass at Vallecillo Rd and IH35
    - 2. Vallecillo Direct connectors/ Overpass with dedicated right turn lanes
      - North bound FM 1472 to East bound Vallecillo
      - South bound/ Overpass with dedicated left turn lanes from FM1472 to East Bound Vallecillo
    - 3. Vallecillo Loop from IH 35 to SH59 - Possible expressway/ freeway section (main lanes and frontage roads)
  - B. Loop 20 (Cuatro Vientos)
    - 1. Southern Extension from Mangana Hein Road to US 83
    - 2. Overpasses at main intersecting roadways along Cuatro Vientos (Lomas del Sur, Sierra Vista, Cielito Lindo)
    - 3. Extend Loop 20 (Cuatro Vientos) South of US 83 to intersect with the Future Outer Loop and Ultimately the International Bridge 4/5.
  - C. FM 1472 (Mines Road)
    - 1. Mines Road – Consideration for Business IH-35
    - 2. FM 3338 Improvements and connections to FM 1472 and SH255
    - 3. Extension of Mines Road to Eagle Pass
  - D. Proposed application to the LWCAMPO Carbon Reduction Program for the construction of a shared use path along Riverbank Drive in northwest Laredo
  - E. International Bridge 4-5 & Colombia Solidarity Bridge – Monitor activity of City of Laredo and Webb County
  - F. IH-35 at Mile Marker 13 (Unitec Overpass and area Roadways)
  - G. Hachar Road
    - 1. Hachar Rd. Direct connectors: North bound FM 1472 to East bound Hachar Rd, South bound FM1472 to East Bound Hachar
  - H. Outer Loop - Construction of the Outer Loop, from US 83 in southern Webb County to Camino Colombia north of Laredo with priority emphasis on the segment from Hwy 59 to Hwy 359.
  - I. Rail Improvements
    - 1. New International Rail line aligned crossing Bridge 4/5 and aligned with Outer Loop (East Rail By-Pass)
    - 2. Improvements to existing at grade crossings and potential future route for hyperloop/express rail for passenger/light freight



- J. Ports to Plains
  - 1. Improvements (widening) to Hwy 83 to Eagle Pass & Del Rio and to I27
  - 2. Connectors/interchanges at SH255 and Hwy 83
- K. Ports to Ports (IH 69 to the Ports of Corpus Christi and Houston)
- L. Bridge Operations
  - 1. Increase use of automation and dynamic scanning to increase freight movement
  - 2. Best practices at ports should be shared with others
- L. Technology
  - 1. Lanes dedicated to autonomous vehicles
  - 2. Integration of 5G network (or newer) with autonomous vehicles and traffic signalization

In summary, RMAs have historically been utilized by communities in different ways. Due to the broad range of power of RMAs, they have been used as a vehicle for the development of toll roads, to pool the tax bases of multiple pre-dominantly low moderate-income Counties to apply for a State Infrastructure Bank Loan, to develop multi-modal solutions for communities, etc. Here in Laredo, the WC-CL RMA can utilize its funding sources to perform studies to help develop new funding opportunities for transportation, and team with its partner agencies to advance priority roadway projects that improve mobility. In that area, the WC-CL RMA works to develop local roadway projects and make them shovel ready for future funding from the state and federal sources. In recent years, the WC-CL RMA has also acted as a bridge in project delivery between Webb County, the City of Laredo, TxDOT, Laredo and Webb County Area MPO, etc. How it is utilized is determined by the WC-CL RMA Board of Directors with advisement from the local leaders of our community.