



2021 PROJECT REPORT

By: Antonio Rodriguez, PE, LGPP

WC-CL RMA General Engineering Consultant (GEC) Deputy Program Manager

December 31, 2021

Background -

The Webb County City of Laredo Regional Mobility Authority (WC-CL RMA) was formally petitioned jointly by Webb County and the City of Laredo to the Texas Transportation Commission for its formation on April 15, 2013 (City of Laredo) and August 18, 2013 (Webb County). The Texas Transportation Commission approved the creation of the WC-CL RMA on February 27, 2014.

The WC-CL RMA is unique in Texas as it is the only RMA that was jointly formed by both a City and a County. The WC-CL RMA Board of Directors consists of nine (9) members. Four members of the Board of Directors are jointly selected by City Council Districts 1 and 2, Districts 3 and 4, District 5 and 6 and Districts 7 and 8. Four members of the Board of Directors are individually selected by members of Commissioners Court from each of the four precincts. The ninth member is the Chair of the Board of Directors who is directly appointed by the Governor of the State of Texas. Each Director serves as a volunteer and is not compensated for any of his or her time spent in service on the Board of Directors. Furthermore, no Director can have any financial interest that would benefit from the actions of the WC-CL RMA.

Since its formation, the RMA Board was entrusted to organize the agency which entailed hiring consultants, developing policy, holding meetings, and filing regulatory annual and periodic reports, including the annual audit as required by the City and County. In the last two years the WC-CL RMA has become involved in roadway construction projects throughout the community, those projects will be described later in this report.

The single revenue source for the RMA is from the \$10 fee per vehicle registered in Webb County which was approved by the 83rd Texas Legislature to fund long-term transportation projects of a regional mobility authority. With these monies, the RMA has been able to perform its role in developing solutions for helping to advance mobility priorities for Webb County and the City of Laredo. It should be noted that, at this time, the RMA does not have any paid employees or facilities from which to conduct its business; however, it does have operating expenses. It is anticipated that a Project Coordinator position will be filled as a paid employee of the WC-CL RMA in the coming years. TxDOT and other entities such as IBC Bank have provided their facilities and resources for RMA Board meetings.



Due to the COVID-19 Pandemic for all of 2021, the WC-CL RMA has conducted the majority of its day-to-day business virtually via WebEx, Zoom and/or Microsoft Team meetings. The virtual meetings consisted of regular Board meetings, project status meetings or coordination meetings with partner agencies such as the TxDOT-Laredo District and the City of Laredo. On October 5, 2021, the WC-CL RMA convened its first in-person meeting of the Board of Directors since the start of the pandemic. Prior to the pandemic, the last in-person meeting of the Board of Directors was conducted on February 7, 2020.

As of November 30, 2021, the WC-CL RMA has an asset balance of **\$11,656,841.88**. The WC-CL RMA also has been granted \$8.95 million from TxDOT that is dedicated for specifically for construction on on-system projects.

The current members of the Board of Directors are the following:

1. Chairman of the Board of Directors – Mr. Jed A. Brown
2. County Precinct No. 1 Director – Mr. Tony Arce, Jr.
3. County Precinct No. 2 Director – Mr. Oscar O. Lopez, Treasurer
4. County Precinct No. 3 Director – Mr. George Beckelhymmer
5. County Precinct No. 4 Director – Ms. Viridiana Fernandez
6. City District 1 & 2 Director – Mr. Jose Murillo
7. City District 3 & 4 Director – Mr. Alfonso Mendiola
8. City District 5 & 6 Director – Mr. Douglas B. Howland, Vice Chair
9. City District 7 & 8 Director – Mr. Arturo Dominguez, Secretary



What has the WC-CL RMA done to date?

- I. **Primary Proposed Project - Vallecillo Road, from FM 1472 to the IH-35 Southbound Frontage Road (February 2015 to Present)** - The Laredo MPO Policy Committee requested that the RMA develop this new location roadway in early 2015, to assist in alleviating congestion on FM 1472. Improvements will consist of the installation of a 5-lane roadway with curb, sidewalk, lighting, and utilities for a total length of 2.75 miles. The project limits begin at the eastside of the intersection FM 1472 and Muller Memorial Blvd. and will extend approximately 2.75 miles to the East and terminate at the southbound frontage road of IH 35. The implementation of this project will provide an alternate route for traffic from the World Trade Bridge area to IH 35 which will improve congestion along the currently, highly congested FM 1472. The implementation of this project will also provide a direct egress route for the Citizens of Laredo living in the La Bota Ranch Subdivision that is located on the west end of Muller Memorial Blvd. This roadway also opens prime property for industrial development and leads to future developments east of IH 35. To date, the WC-CL RMA has investigated multiple avenues to develop funding for the implementation of the project through local, state, and federal sources as well as the feasibility of a corridor Transportation Reinvestment Zone (TRZ). The current **total project cost** (including the value of the donated ROW which is roughly \$10 million) for the implementation of Vallecillo Road is **\$41,471,000**. The current **total construction cost** of the project is **\$26,825,000**. Due to the importance of the project to the community, the WC-CL RMA, the City of Laredo, and local businesses are taking a Public-Private Development approach to implement the project.

- | | |
|--|--|
| 1. WC-CL RMA = | \$4,000,000 (9.7% of Total Project Cost) |
| 2. City of Laredo = | \$5,000,000 (12.1% of Total Project Cost) |
| 3. Killam Company (Private Business) = | \$5,000,000 cash + \$10,000,000 land (36.2% of Total Project Cost) |

These commitments have been codified via an Inter-Local Agreement between the WC-CL RMA and the City of Laredo, executed on September 18, 2020. It has also been codified via a Memorandum of Understanding between the WC-CL RMA and the Killam Company, executed on October 2, 2020. The private-public team will be approaching members of the Texas Transportation Commission to request approximately \$17,471,000 which equates to 42.0% of the total project cost in financial assistance from TxDOT to finalize the funding plan for the project and ultimately take over Vallecillo Road and as on-system State roadway. As the project sponsor, the WC-CL RMA will enter into an Advanced Funding Agreement with



TxDOT for the funding and ownership component. The WC-CL RMA will continue as the lead agency for the development of the project, completion of the project schematic, completion of the environmental clearance through an Environmental Assessment with TxDOT and development of the Plans, Specifications and Estimate. TxDOT will take the lead in the letting and construction of the project. The WC-CL RMA anticipates construction completion in 2025.

As part of the overall development of the project, the RMA implemented both traffic and geotechnical studies in 2020 (Resolution 20-03 and Resolution 20-11). The RMA completed these studies in December 2020.

Vallecillo Road

NET LENGTH OF PROJECT = 14,918 FT = 2.83 MI
NET LENGTH OF ROADWAY = 14,918 FT = 2.83 MI

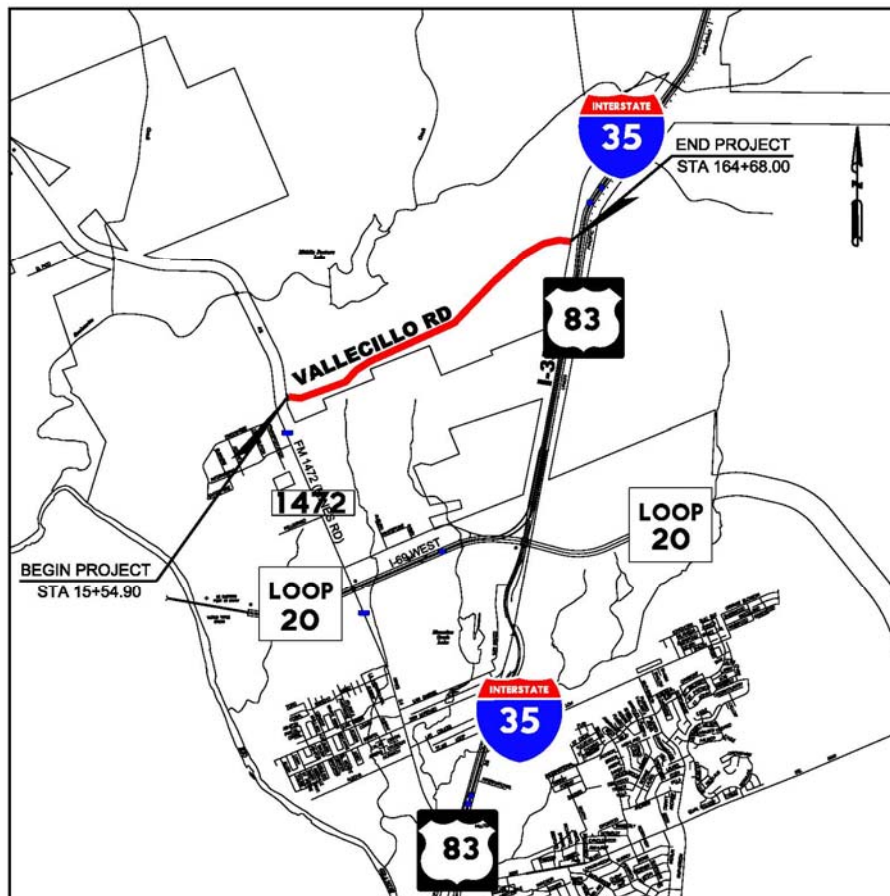


Figure 1 – Location Map



II. **Killam Industrial Blvd and FM 1472 Turn Lane Additions** – RMA developed plans, specifications and estimate for the implementation of proposed right turn lanes on FM 1472 northbound approaching Killam Industrial Blvd. and on Killam Industrial Blvd. westbound approaching FM 1472. Construction of the project let in November 2020 and is being constructed by the TxDOT-Laredo District. As part of the overall project development, the RMA implemented plans, specifications and estimate development for the relocation of a 12-inch water line as part of the overall project (Resolution 20-04). The RMA also entered into an Advanced Funding Agreement with TxDOT for construction of the project (Resolution 20-07 and Resolution 20-08).

Total cost of the project is \$2,121,568.80. A breakdown of the funding of the project is as follows:

- | | |
|----------------------------|----------------|
| 1. WC-CL RMA = | \$861,408.05 |
| 2. City of Laredo = | \$1,161,158.75 |
| 3. TxDOT-Laredo District = | \$99,002.00 |

This project began construction in **December 2021** and scheduled for completion by **June 2022**.

Killam Industrial Blvd. Turn Lanes

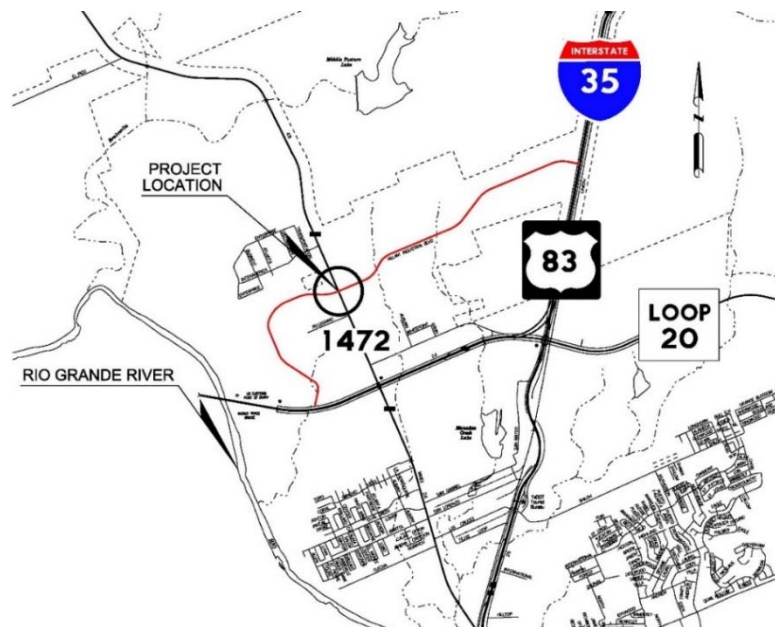


Figure 4 – Location Map



- IV. **Springfield Road Extension Project(Phase III)** – RMA passed a resolution (Resolution 20-12) to provide financial support to the City of Laredo in the development and implementation of extending and inter-connecting Springfield Road in north Laredo from Del Mar to US 59 in July 2020. The RMA approved a resolution (Resolution 21-11) to execute an Inter-Local Agreement with the City of Laredo to provide up to **\$2,000,000** for the construction of the project. The City of Laredo designed the project and is leading the development of the project. The project was advertised for construction in July 2021. It was awarded to AZAR Services, LLC for a contract amount of **\$4,206,702.55**. The WC-CL RMA is funding **47.5% of the construction contract amount**. NTP for construction was provided in December 2021.

Springfield Road Extension

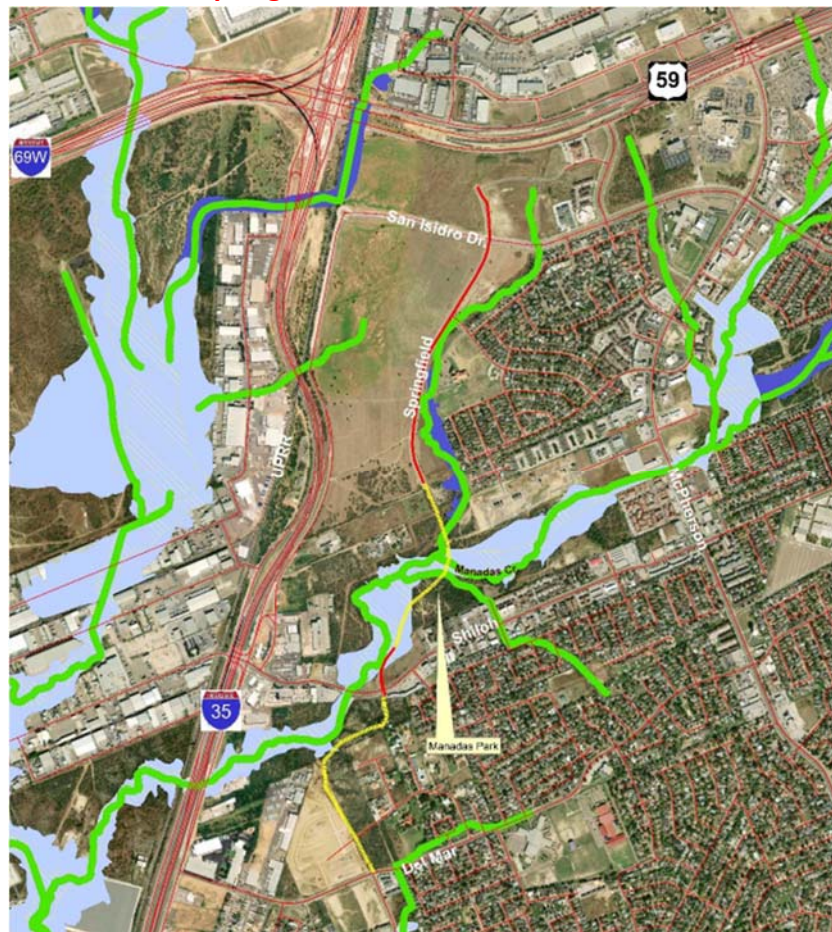


Figure 5 – Location Map



- V. **Webb County Fairgrounds (Life Downs) Master Plan Traffic Study** – RMA passed a resolution (Resolution 20-14) to support Webb County in developing a traffic study to forecast the traffic impacts of the proposed improvements from the recently developed master plan and provide recommendations of traffic operation improvements for the surrounding roadway facilities to mitigate the increase in traffic. The support for the study was increased monetarily on **November 16, 2021 (Resolution 21-13)**. The WC-CL RMA is providing **\$69,000 in funding** for the traffic study and performing the study with their consultants. The County is revising the master plan for the Fair Grounds in January/February 2022. The traffic study will be complete in the **Fall of 2022**.

Webb County Fairgrounds Traffic Study



Figure 6 – Location Map



VI. *IH 69 W Improvements (Upgrade US 59 to Interstate Standards from International Blvd. to Business 59, to Duval County Line and ultimately to Houston, TX.)*

This Project is one of the main reasons for the formation of the RMA. The Corridor is a designated major truck route that provides connectivity between the World Trade Bridge, US 83, and the future I-69W Corridor to Corpus Christi, as well as rail and freight handling facilities on the north and east sides of Laredo. The City of Laredo is arguably the main land port of commerce in the United States with Mexico via the World Trade Bridge with over 15,000 trucks crossing daily millions of dollars of economic value are lost for every minute of delay in Truck traffic. Congestion and other delays associated with traveling this corridor have a direct and indirect impact on jobs in Texas, in the U.S. and in North America. For these reasons, IH 69W is a priority to the WC-CL RMA, the City of Laredo, Webb County, the Laredo MPO, and the TxDOT-Laredo District. As part of the overall effort to improve IH 69W, the RMA GEC has regular representation at the Alliance for I-69 Texas meetings. The Alliance is a coalition made up of cities, counties, port authorities and community leaders building grassroots support for upgrading the entire Interstate 69 route in Texas.

In addition to working with the Alliance to advocate policy makers for the improvement of IH 69W, the RMA developed a financial plan to improve a segment of the Corridor from International Blvd. to US 59 to interstate standards via Design Build with Finance. The financial plan determined that the use of TRZ from IH 35 to US 59 coupled with current funds projected to be dedicated to the Laredo Community from federal and state sources could advance the project for completion within five years. To that end, the RMA conducted an industry review workshop with prospective design build developers to gauge the level of interest from the developer community and followed-up the industry review workshop with a series of one-on-one meetings with prospective design build developers.

Apart from the Design Build with Finance approach, the City of Laredo, Webb County, TxDOT-Laredo District and Laredo MPO is focusing on implementing this section of the Corridor via the Design-Bid-Build approach. As part of this effort, the Laredo MPO has programmed Category 2, 10 and 12 funding for construction letting in 2021, 2022 and 2023, and the TxDOT-Laredo District has contracted multiple consultants for the development of plans, specifications and estimates for the full ultimate corridor improvements (main lanes and frontage roads). To support this effort, the WC-CL RMA submitted a grant application 2016 via the FASTLANE Act and provided grant application services to the City of Laredo and TxDOT to obtain a \$42 million INFRA Grant in 2019 from the Federal Highway Administration. While the RMA is no longer the lead agency in the development of this



project, due to its importance for the overall growth of the community, it remains a long-term priority for the WC-CL RMA.

IH 69-W

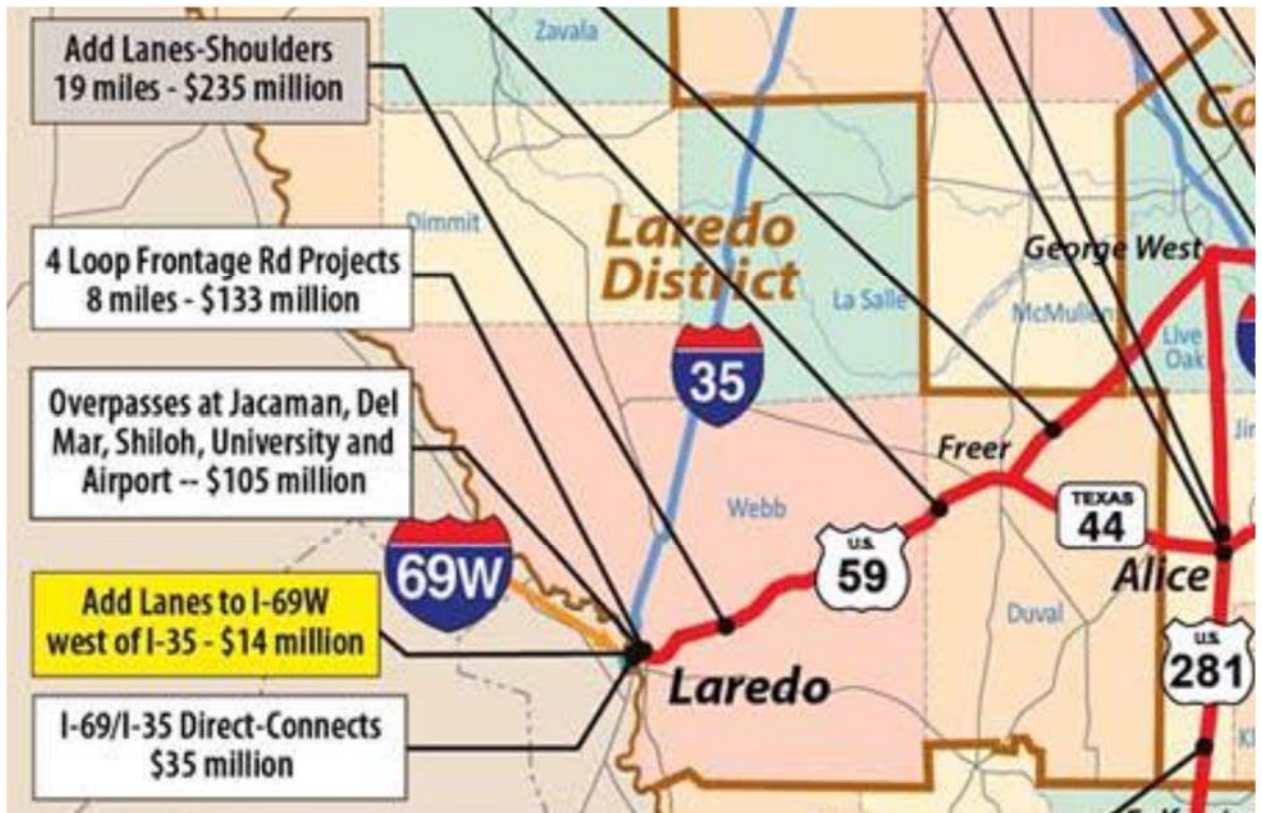


Figure 7 – Location Map



VII. *Transportation Reinvestment Zone Studies (TRZ)* – The RMA has performed the following TRZ efforts to date:

- In its efforts to advance the Vallecillo Road Project and the Loop 20 Project, the RMA commissioned its GEC to perform TRZ Feasibility Studies for the advancement of Vallecillo Road.
- The RMA commissioned its GEC to perform a Countywide TRZ Study for the advancement of all road projects in the Webb County area.
- In 2018, the RMA commissioned its GEC to perform a TRZ Study for the advancement of Loop 20 South from US 59 to US 83 to upgrade the existing rural divided facility to a controlled access freeway facility with a direct connection to the future Port of Entry, International Bridge 5.
 - Upon final concurrence by the City of Laredo, the RMA will work with the City of Laredo to develop a defined zone for Loop 20 South from US 59 to proposed International Bridge 4/5. The Zone could also be extended along SH 359, westward from Loop 20. The WC-CL RMA hosted a TRZ workshop on December 17, 2021 with attendance from Mayor Pete Saenz, Laredo, and Webb County Area MPO Executive Director Juan Mendive and the City of Laredo Economic Development Director Tecló Garcia to strategize the update of the Loop 20 South TRZ Study and determine next steps.
- The WC-CL RMA was approached by the City of Laredo in the 4th quarter of 2021 to partner with the City and update the TRZ study for the Cuatro Vientos corridor from Hwy 59 south to the proposed bridge 4/5 location. The WC-CL RMA held a TRZ workshop in December 2021 with participants from the City, the MPO, TxDOT and other attendees. During 2022 it is anticipated that this Cuatro Vientos TRZ study will be updated which could lead to further partnerships with the City on this TRZ. The Mines Road-area River Road project is also another candidate for a TRZ.

VIII. *North Laredo Webb County Transportation Planning Study (Completed)* - The RMA completed a long-term transportation study for mobility improvements in North Webb County from Loop 20 to Camino Columbia along FM 1472 in order to remove the current and future congestion on FM 1472 in 2020. The Study provided a clear assessment of mobility conditions in North Laredo and to provide a roadmap for growing the transportation network that can meet increasing mobility demands into the future. The goals of the study were to:

- Identify feasible projects that will help relieve congestion impacts in North Laredo
- Promote safety for all uses of the transportation network.



- Coordinate implementation and planning efforts comprehensively with International Bridge, Port-of-Entry logistics and the Freight Network.
- Coordinate private land development and public investments in mobility infrastructure
- Promote efficient movement of goods while reducing impacts of freight operations on neighborhoods and sensitive land.
- Improve overall transportation network connectivity and resiliency in North Laredo.

The study process included public input in the form of stakeholder meetings and public meetings, planning, and engineering to define and evaluate transportation solutions for the development of an ultimate implementation plan that will have a list of project priorities for the community to program and execute over the next 20 years. Total estimated cost of the Study was \$634,421. Funding for the study consisted of both federal and local vehicle registration fees monies. Eighty percent of the study was funded by the Coordinated Border Infrastructure (CBI) money which is federal money that is supervised by the Texas Department of Transportation (TxDOT). The remaining twenty percent was funded by the Webb County Vehicle Registration Fees which supervised by the WC-CL RMA. Below was a breakdown of the funding for the study:

1. TxDOT = \$507,538.80
2. WC-CL RMA = \$126,884.20
- 3. Final Study Cost at Completion = \$608,429.57**

At the completion of the study, the study was forwarded to the Laredo MPO Executive Director and staff, the TxDOT-Laredo District, the City of Laredo City Engineer, the Webb County Engineer, the Honorable Mayor Pete Saenz, the Honorable Council Member George Altgelt, the Honorable Judge Tano Tijerina, the Honorable Commissioner Cindy Liendo, the Honorable State Representative Richard Raymond, the Honorable State Representative Tracey King, the Honorable State Senator Judith Zaffirini and the Honorable Congressman Henry Cuellar.



North Laredo Webb County Transportation Planning Study

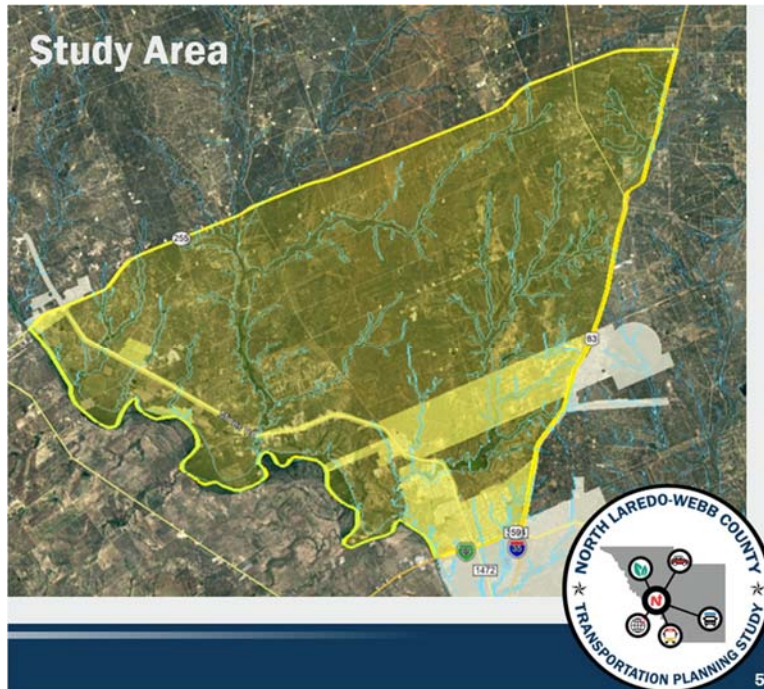


Figure 2 – Study Area

- IX. WC-CL RMA Plans for 2022 and Beyond(Including, but not limited to the following)**
- A. Vallecillo Road
 - 1. Vallecillo overpass at Vallecillo Rd and IH35
 - 2. Vallecillo Direct connectors/ Overpass with dedicated right turn lanes
 - North bound FM 1472 to East bound Vallecillo
 - South bound/ Overpass with dedicated left turn lanes from FM1472 to East Bound Vallecillo
 - 3. Vallecillo Loop from IH 35 to SH59 - Possible expressway/ freeway section (main lanes and frontage roads)
 - B. River Bend Road from Aquero Rd to FM 1472 Implementation Study
 - C. Loop 20 (Cuatro Vientos)
 - 1. Southern Extension from Mangana Hein Road to US 83
 - 2. Overpasses at main intersecting roadways along Cuatro Vientos (Lomas del Sur, Sierra Vista, Cielito Lindo)



3. Extend Loop 20 (Cuatro Vientos) South of US 83 to intersect with the Future Outer Loop and Ultimately the International Bridge 4/5.
- D. FM 1472 (Mines Road)
 1. Mines Road – Superstreet Improvements
 2. FM 3338 Improvements and connections to FM 1472 and SH255
 3. Extension of Mines Road to Eagle Pass
 - E. International Bridge 4-5
 - F. Hachar Road
 1. Hachar Rd. Direct connectors: North bound FM 1472 to East bound Hachar Rd, South bound FM1472 to East Bound Hachar
 - G. Outer Loop - Construction of the Outer Loop, from US 83 in southern Webb County to Camino Colombia north of Laredo with priority emphasis on the segment from Hwy 59 to Hwy 359.
 - H. Rail Improvements
 1. New International Rail line aligned crossing Bridge 4/5 and aligned with Outer Loop (East Rail By-Pass)
 2. Improvements to existing at grade crossings and potential future route for hyperloop/express rail for passenger/light freight
 - I. Ports to Plains
 1. Improvements (widening) to Hwy 83 to Eagle Pass & Del Rio and to I27
 2. Connectors/interchanges at SH255 and Hwy 83
 - K. Ports to Ports (IH 69 to the Ports of Corpus Christi and Houston)
 - L. Bridge Operations
 1. Increase use of automation and dynamic scanning to increase freight movement
 2. Best practices at ports should be shared with others
 - L. Technology
 1. Lanes dedicated to autonomous vehicles
 2. Integration of 5G network (or newer) with autonomous vehicles and traffic signalization

In summary, the RMA has historically been utilized by communities in different ways. Due to the vast powers of the RMA, it has been used as a vehicle for the development of toll roads, to pool the tax bases of multiple pre-dominantly low moderate-income Counties to apply for a State Infrastructure Bank Loan, to develop multi-modal solutions for communities, etc. Here in Laredo, the RMA can utilize its funding sources to perform studies to help develop new funding sources for transportation, team with its partner agencies to advance local projects that improve mobility, work to develop projects and make them shovel ready for future funding from the state and federal sources, and can act as bridge in project



delivery between the County, the City, TxDOT, Mexico, etc. How it is utilized is at the behest of the leaders of our community, the Chair of the WC-CL RMA, and the WC-CL RMA Board of Directors.