

WELCOME

North Laredo-Webb County Transportation Planning Study

PUBLIC MEETING

November 6, 2019

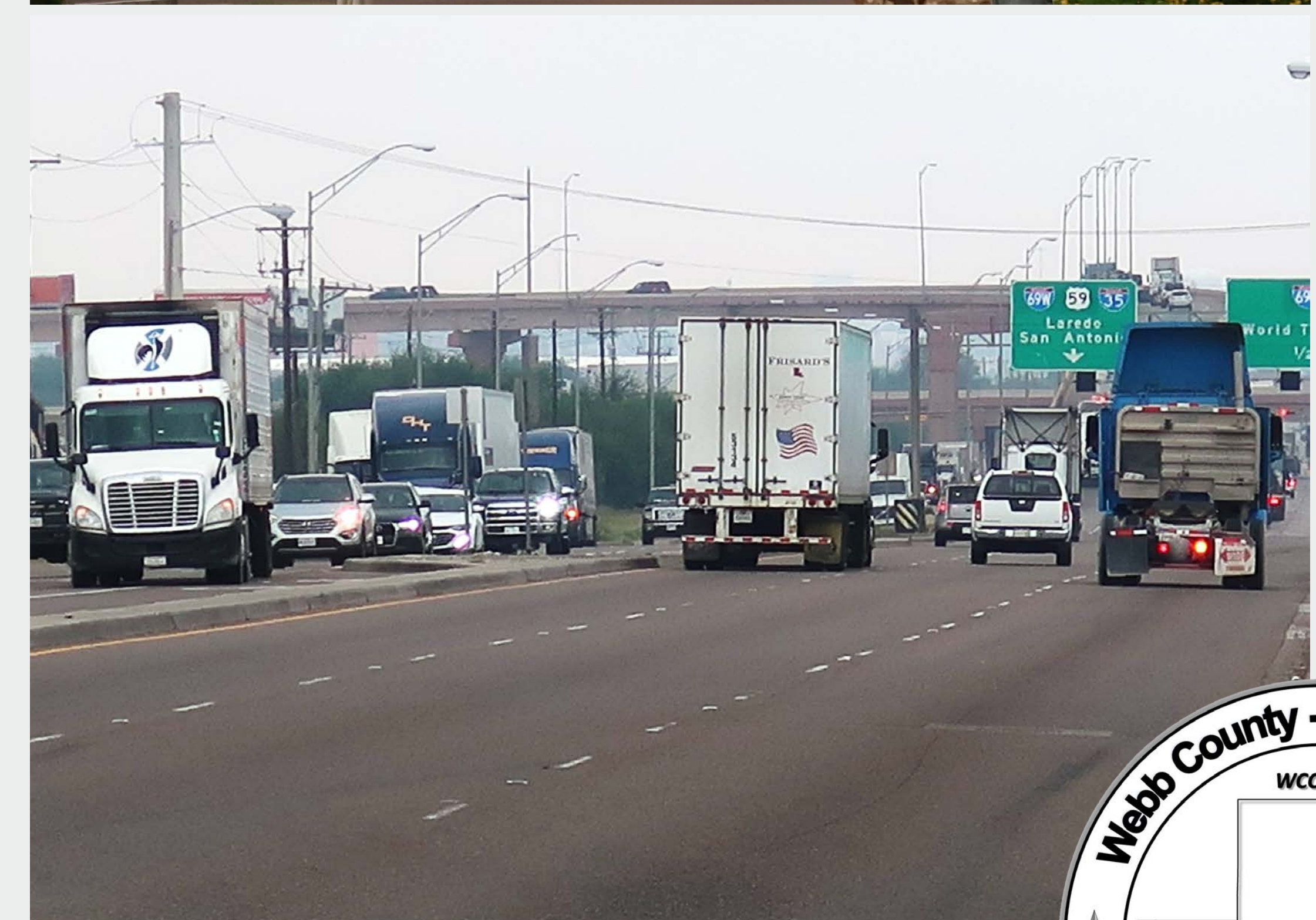
Study Purpose

- **Provide a clear assessment of mobility conditions in North Laredo**
- **Provide a roadmap for growing the transportation network to meet increasing mobility demands into the future**



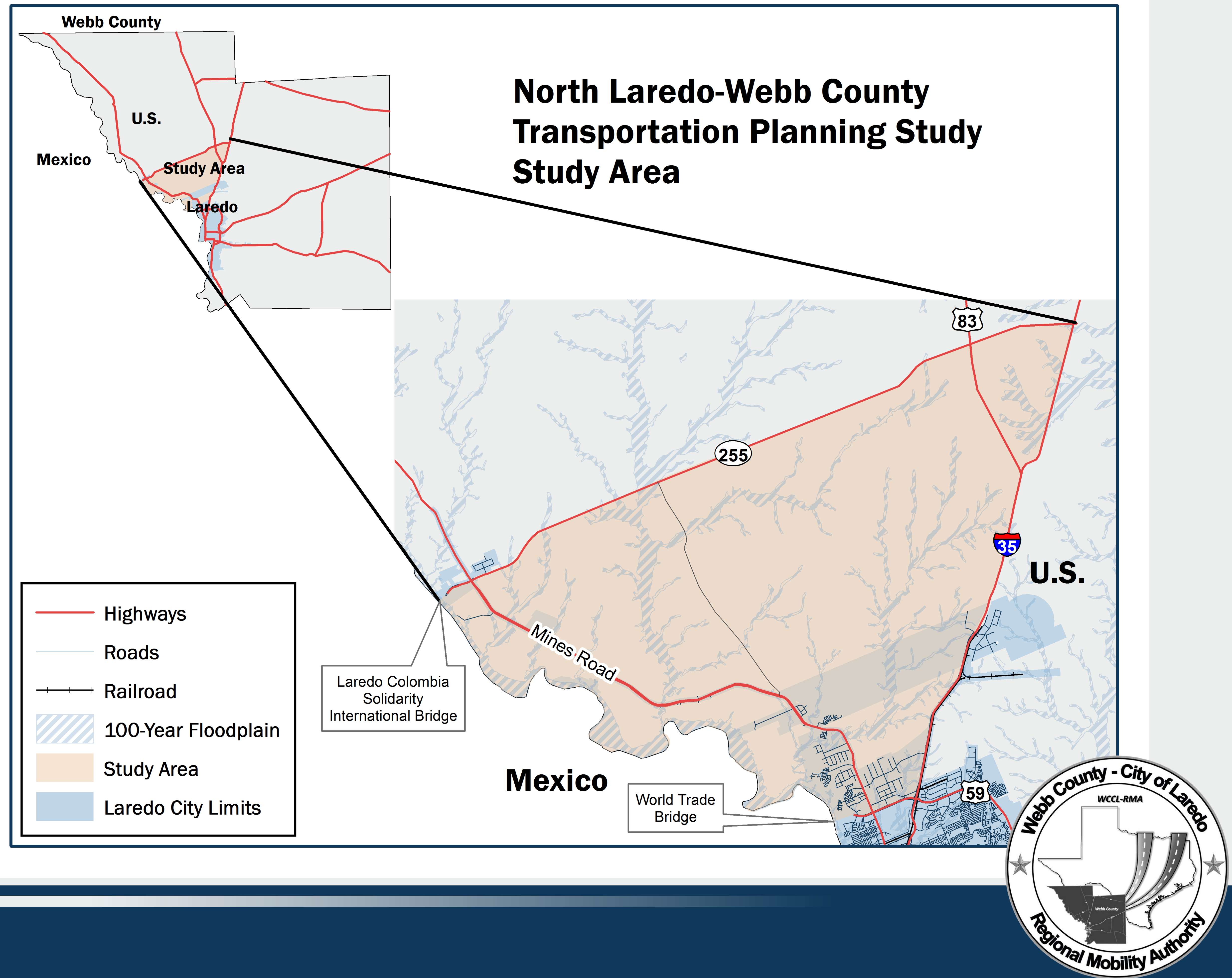
Study Goals

- **Identify roadway improvement projects to relieve congestion in North Laredo**
- **Promote safety for all users of the transportation network**
- **Coordinate planning and implementation efforts with international bridge and port of entry operations**
- **Coordinate private land development and public investments in mobility infrastructure**
- **Promote efficient movement of goods while reducing impacts of freight operations on neighborhoods and sensitive lands**
- **Improve overall transportation network connectivity and resiliency**



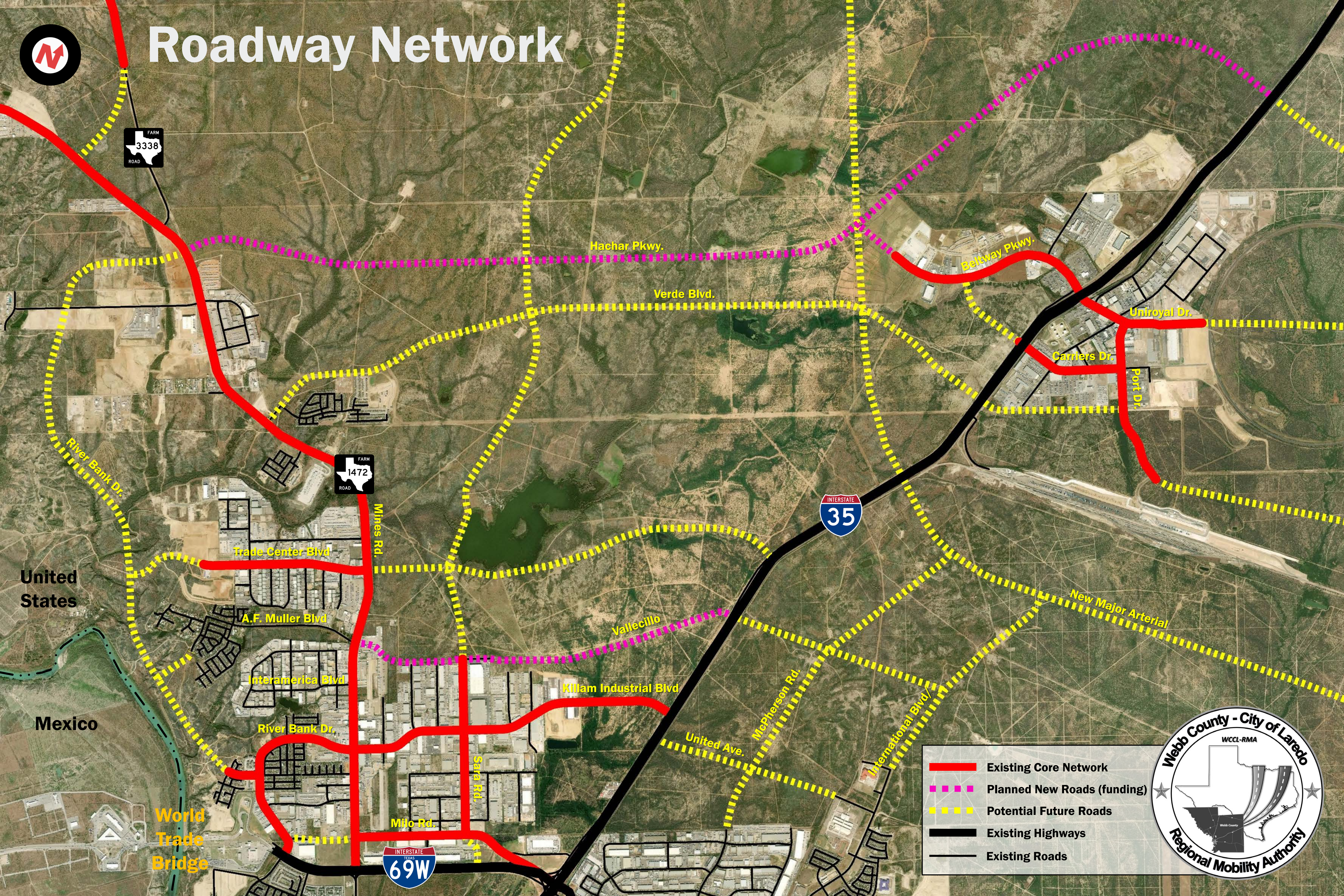
Study Area

The area of focus is located between the World Trade and Colombia Solidarity Bridges and bound by I-35, I-69W, the Rio Grande and TX 255.





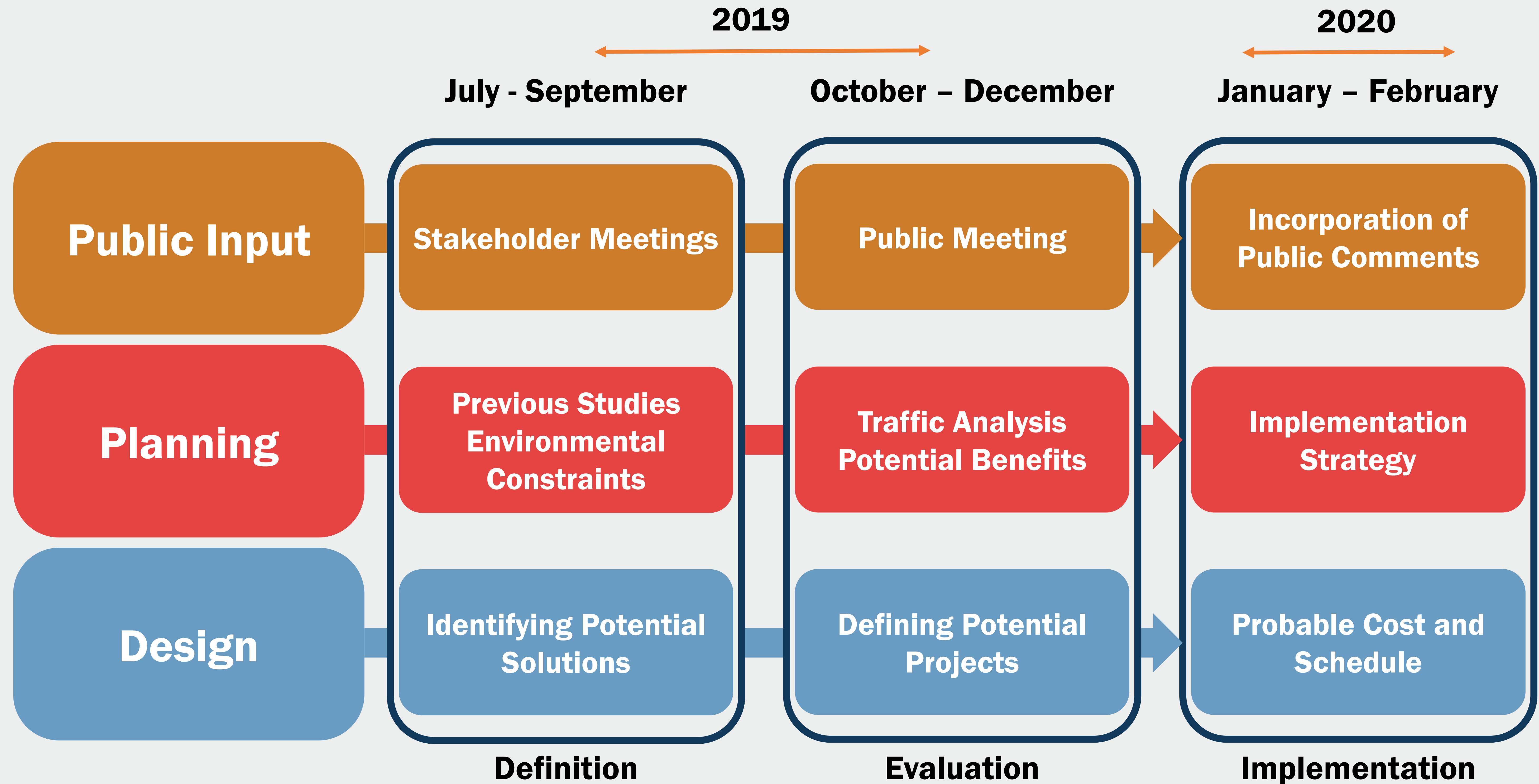
Roadway Network



- Existing Core Network
- Planned New Roads (funding)
- Potential Future Roads
- Existing Highways
- Existing Roads



Study Process & Timeline



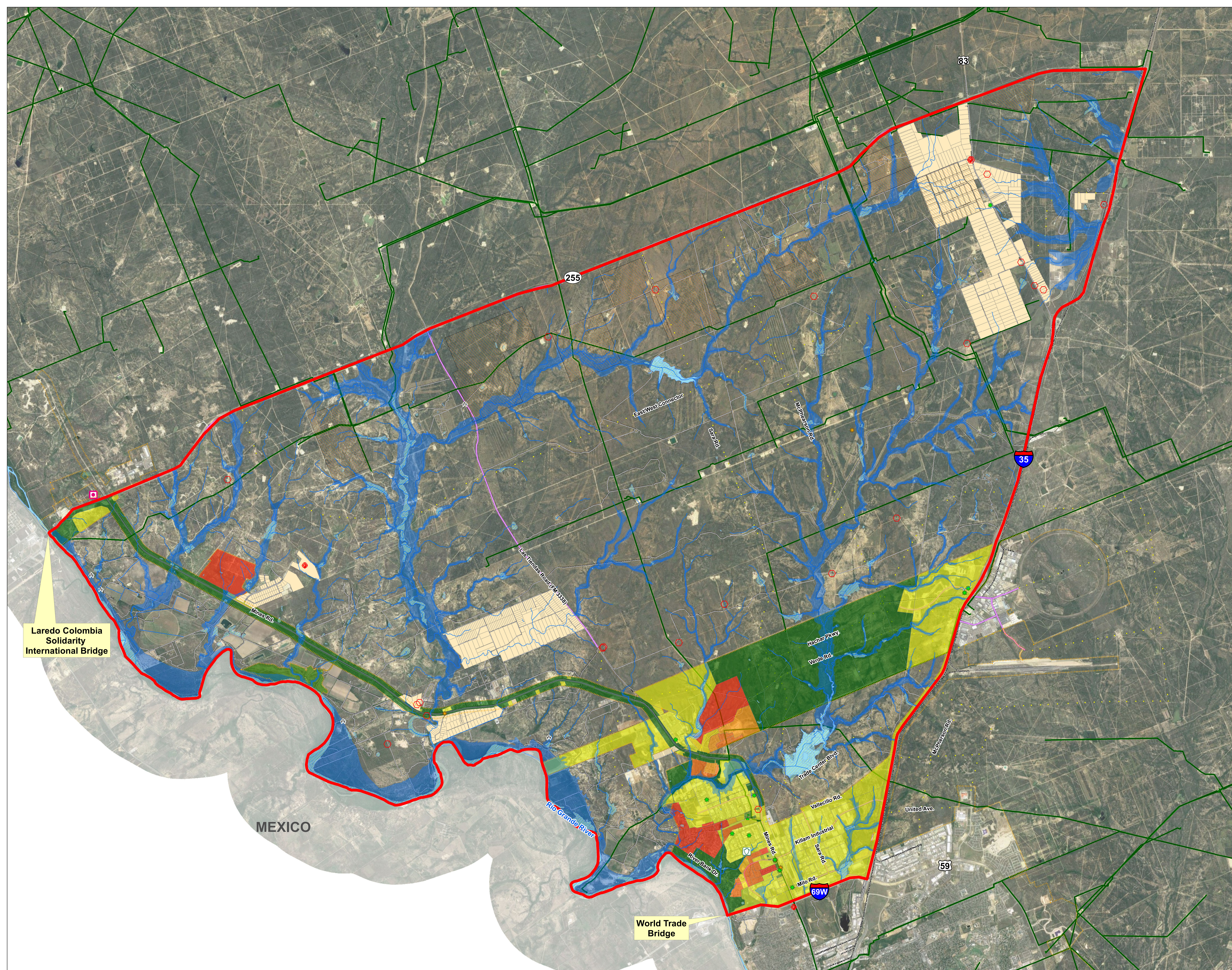


Roadway Priorities

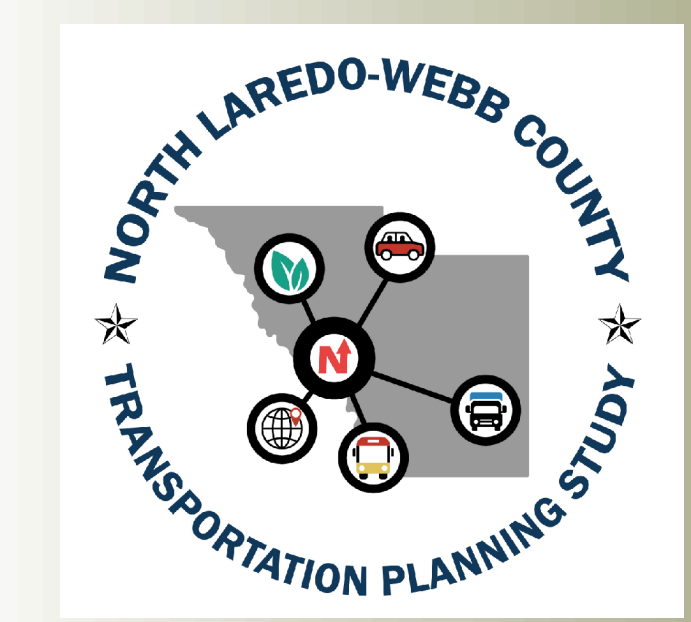
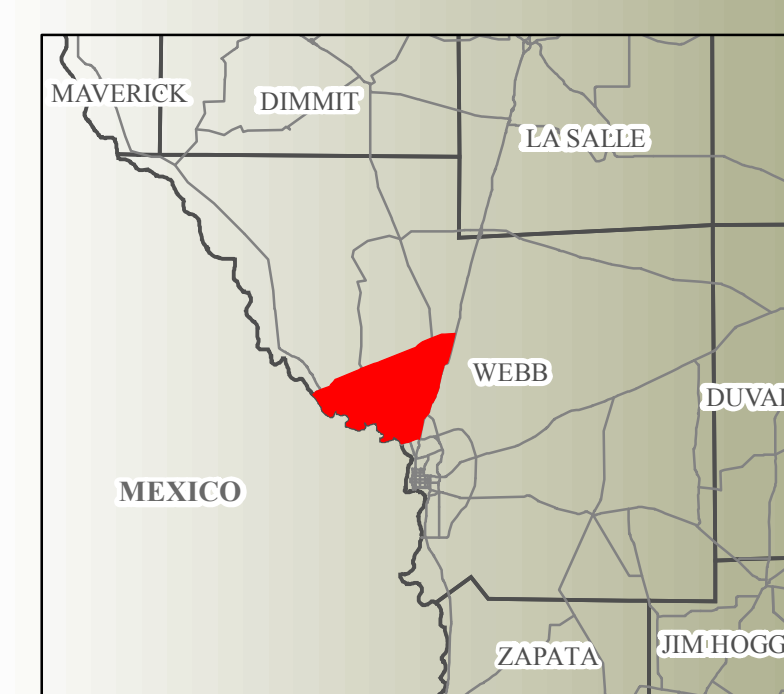
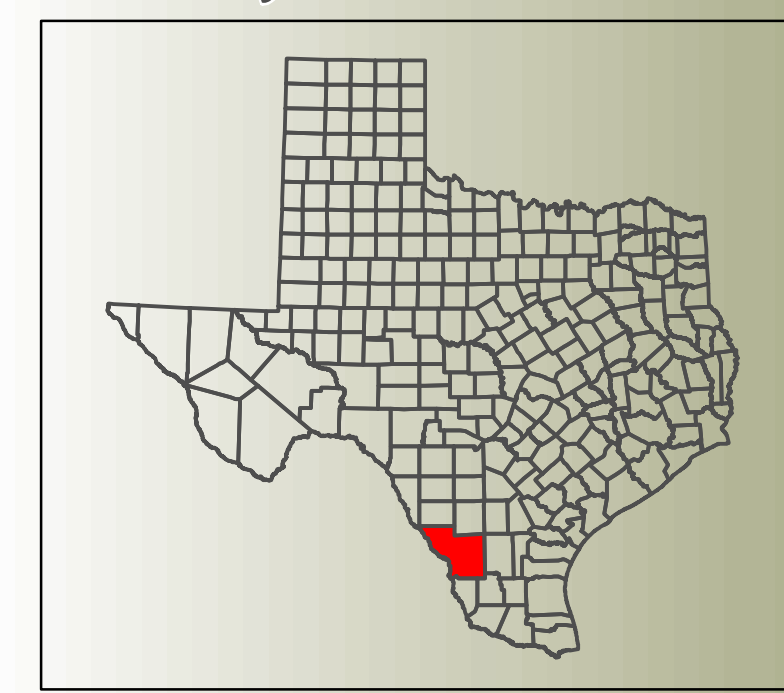


- Existing Roads to Improve
- Roads to Build
- Potential Future Roads
- Existing Highways
- Existing Roads



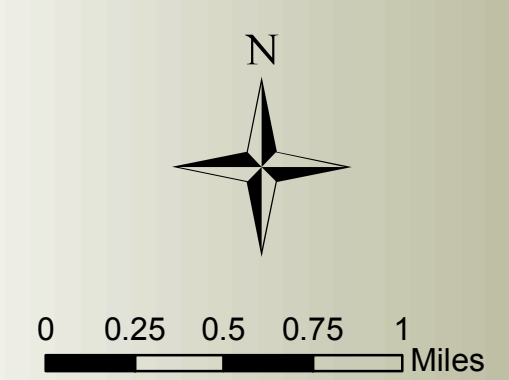


Project Location



Legend

- Laredo Constraints Study Area
- Laredo City Limits
- Colonia Subdivision Plat
- Existing Roadway
- Existing Roadway with Proposed Improvement
- Proposed Roadway
- Railroad
- Stream
- NWI Wetland
- Waterbody
- 100-YR Floodplain
- Well
- School
- Park
- Fire Station
- Cemetery
- Historical Marker
- Petroleum Storage Tank
- Leaking Petroleum Storage Tank
- Oil and/or Gas Pipeline
- Active Oil and Gas Lease
- Zoning District**
- Agriculture
- Community Business
- Heavy Manufacturing
- Highway Commercial
- Light Manufacturing
- Limited Business
- Multi-Family Residential
- Single Family Manufactured Housing
- Single Family Reduced Area
- Single Family Residential

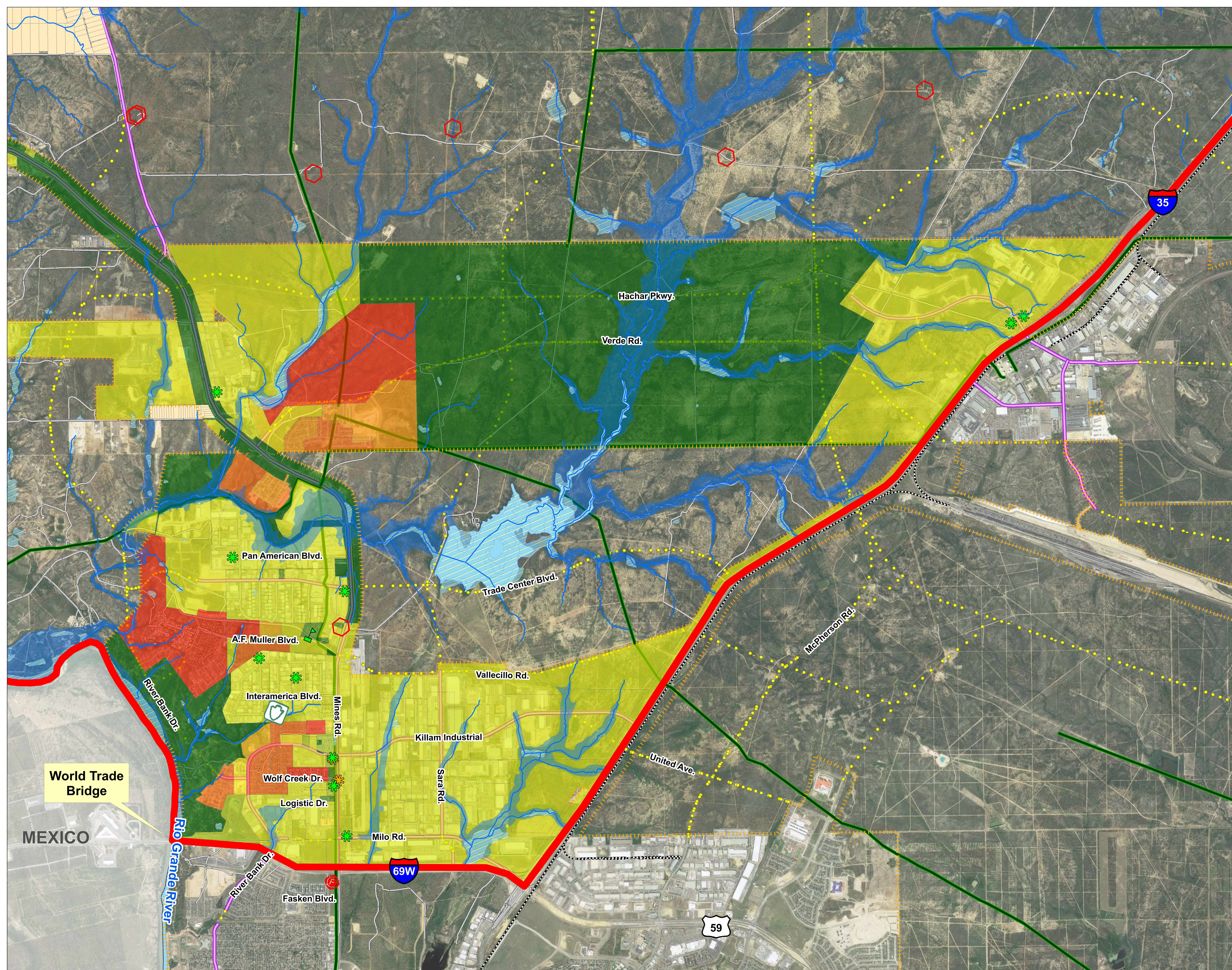


Date: 10/31/2019

Source: 2019 Imagery and transportation data from TNRIS; City of Laredo; FEMA; GLO; TCEQ; THC; TWDB; TxDOT; USFWS; USGS; RRC and Webb County.

Disclaimer: This map was generated by HNTB Corporation using GIS (Geographic Information Systems) software. No claims are made for the accuracy or completeness of the information shown herein nor for its suitability for a particular use. The scale and location of all mapped data are approximate.

ENVIRONMENTAL CONSTRAINTS



Project Location

NORTH LAREDO-WEBB COUNTY
TRANSPORTATION PLANNING STUDY

HNTB

Legend

- Laredo Constraints Study Area
- Laredo City Limits
- Colonia Subdivision Plat
- Existing Roadway
- Existing Roadway with Proposed Improvement
- Proposed Roadway
- Railroad
- Stream
- NWI Wetland
- Waterbody
- 100-YR Floodplain
- Well
- School
- Park
- Fire Station
- Cemetery
- Historical Marker
- Petroleum Storage Tank
- Leaking Petroleum Storage Tank
- Oil and/or Gas Pipeline
- Active Oil and Gas Lease

Zoning District

- Agriculture
- Community Business
- Heavy Manufacturing
- Highway Commercial
- Light Manufacturing
- Limited Business
- Multi-Family Residential
- Single Family Manufactured Housing
- Single Family Reduced Area
- Single Family Residential

0 0.1 0.2 0.3 0.4 Miles

Date: 10/31/2019

Source: 2019 Imagery and transportation data from TNRIS; City of Laredo; FEMA; GLO; TCEQ; THC; TWDB; TxDOT; USFWS; USGS and Webb County.

Disclaimer: This map was generated by HNTB Corporation using GIS (Geographic Information Systems) software. No claims are made to the accuracy or completeness of the information shown herein due to its suitability for a particular use. The scale and location of all mapped data are approximate.

ENVIRONMENTAL CONSTRAINTS

Tell us what you think!

Submit a comment by:

- Providing input at tonight's meeting
 - Complete a written comment card
 - Provide your comments at the Mapping Station
- Emailing your comment to **NLaredoWebbStudy@hntb.com**
- Mailing your comments to:
HNTB - Attn: Cynthia Coss
RE: NLWC Transportation Study
9601 McAllister Freeway, Suite 1001
San Antonio, TX 78216

Deadline for comments: November 21, 2019

For more information, please visit our website
www.webbrma.com/n-laredo-transportation-planning-st

