



Public Meeting Discussion

Transportation Solutions for North Laredo

November 6, 2019

Alleviating Traffic along Mines Road

FM 1472

60,000 average daily traffic

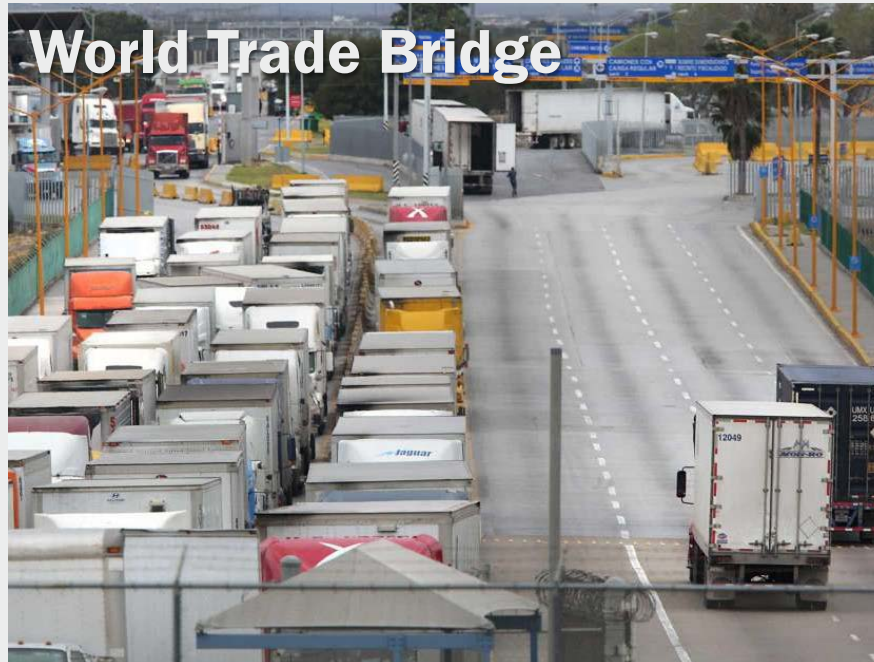
60% freight trucks
(36,000 trucks per day)

Farm-to-Market Road

IH-35

58,000 average daily traffic

Interstate Highway



“...\$20 Billion in trade during the month of March...”

Laredo, Texas becomes No. 1 U.S. trade hub



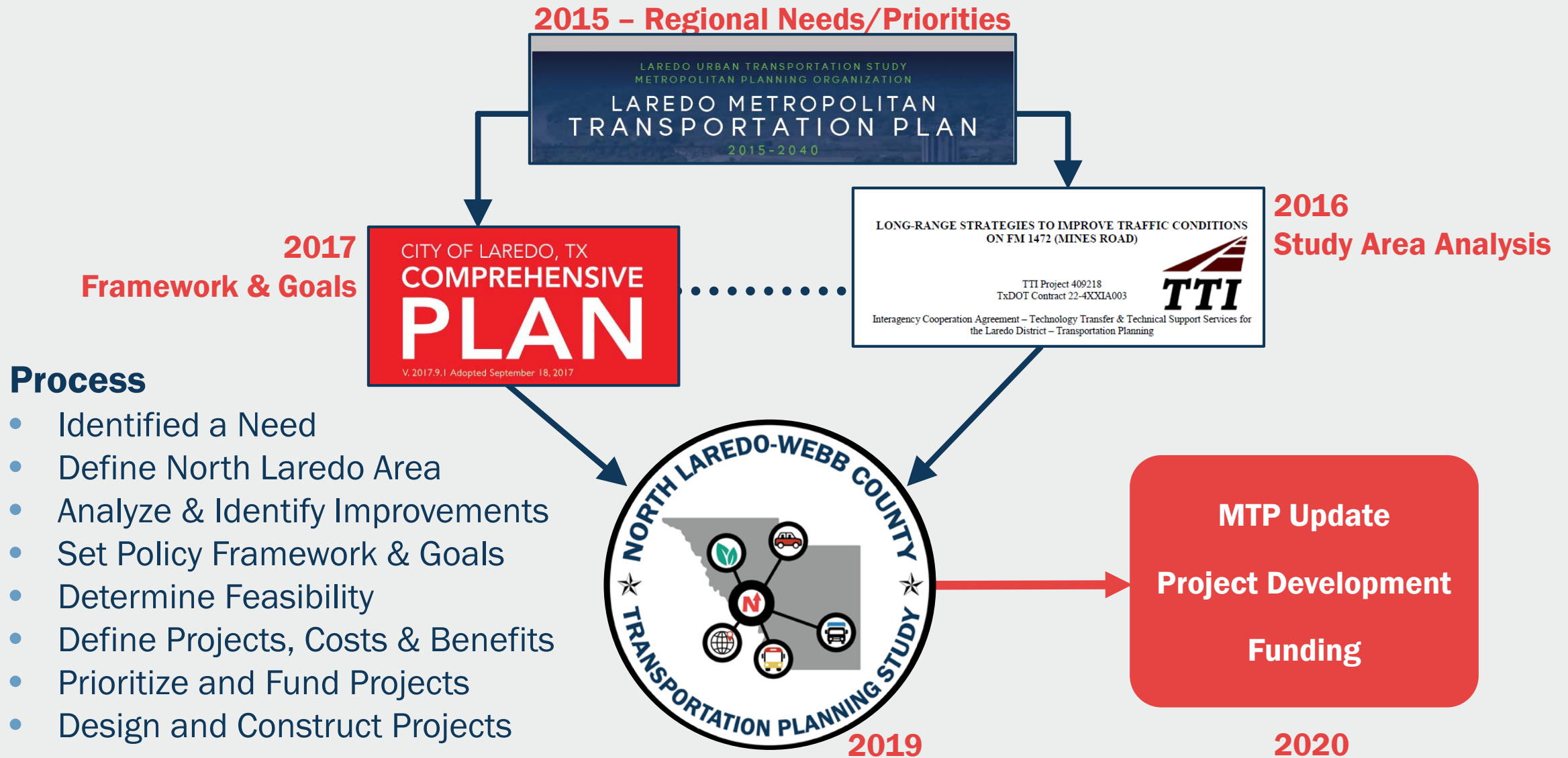
Noi Mahoney · 06/06/2019

 **FREIGHT**WAVES®

1 🔥 2,645 📖 2 minutes read



Building upon previous work



Study Purpose & Goals

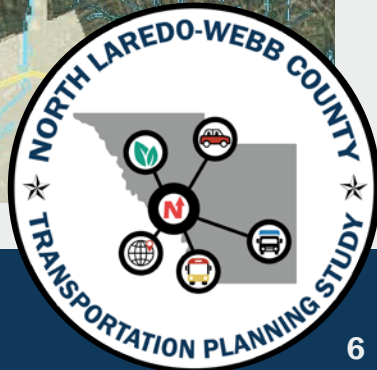
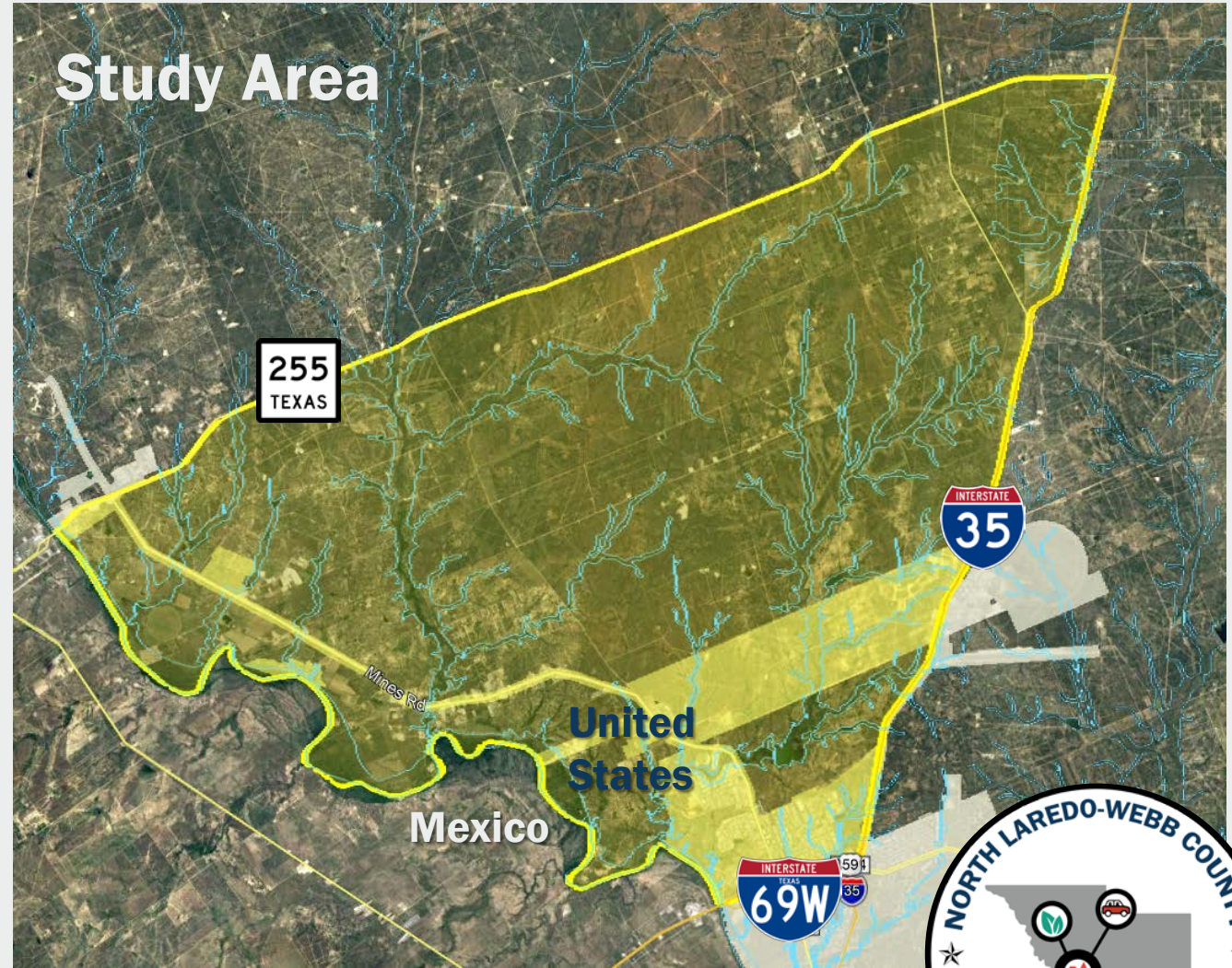
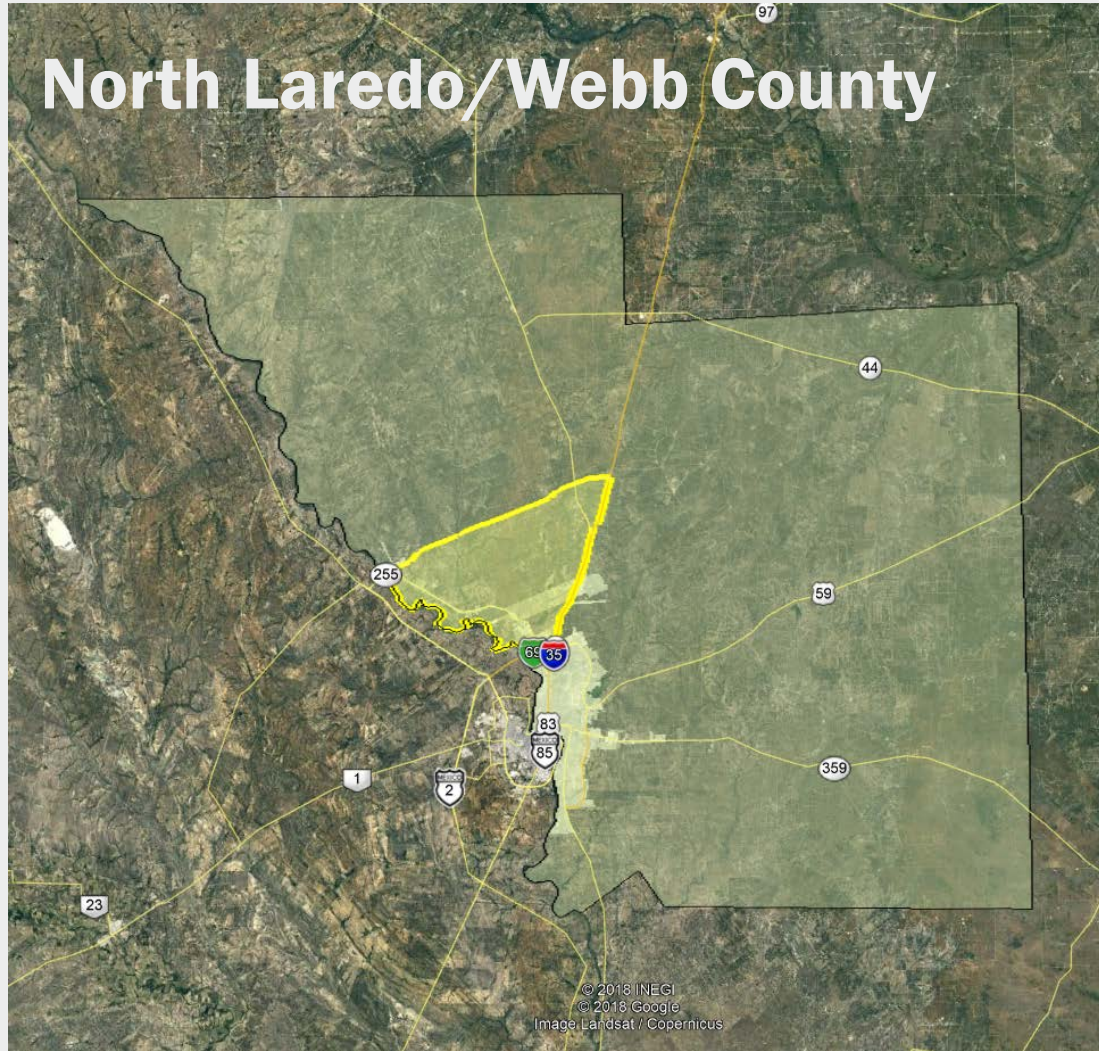
Study Purpose

The purpose of the **North Laredo-Webb County Transportation Planning Study** is to provide a clear assessment of mobility conditions in North Laredo and to provide a roadmap for growing the transportation network to meet increasing mobility demands into the future.

Goals

- **Identify feasible projects** that will help relieve congestion impacts in North Laredo
- **Promote safety** for all users of the transportation network
- **Coordinate implementation** and planning efforts comprehensively with international bridge, port-of-entry logistics and the freight network
- **Coordinate** private land **development and public investments** in mobility infrastructure
- **Promote efficient movement of goods while reducing impacts** of freight operations on neighborhoods and sensitive lands
- **Improve overall transportation network** connectivity and resiliency in North Laredo

Study Area



Study Process



On the Ground





Roads in the Area
Current roadway network

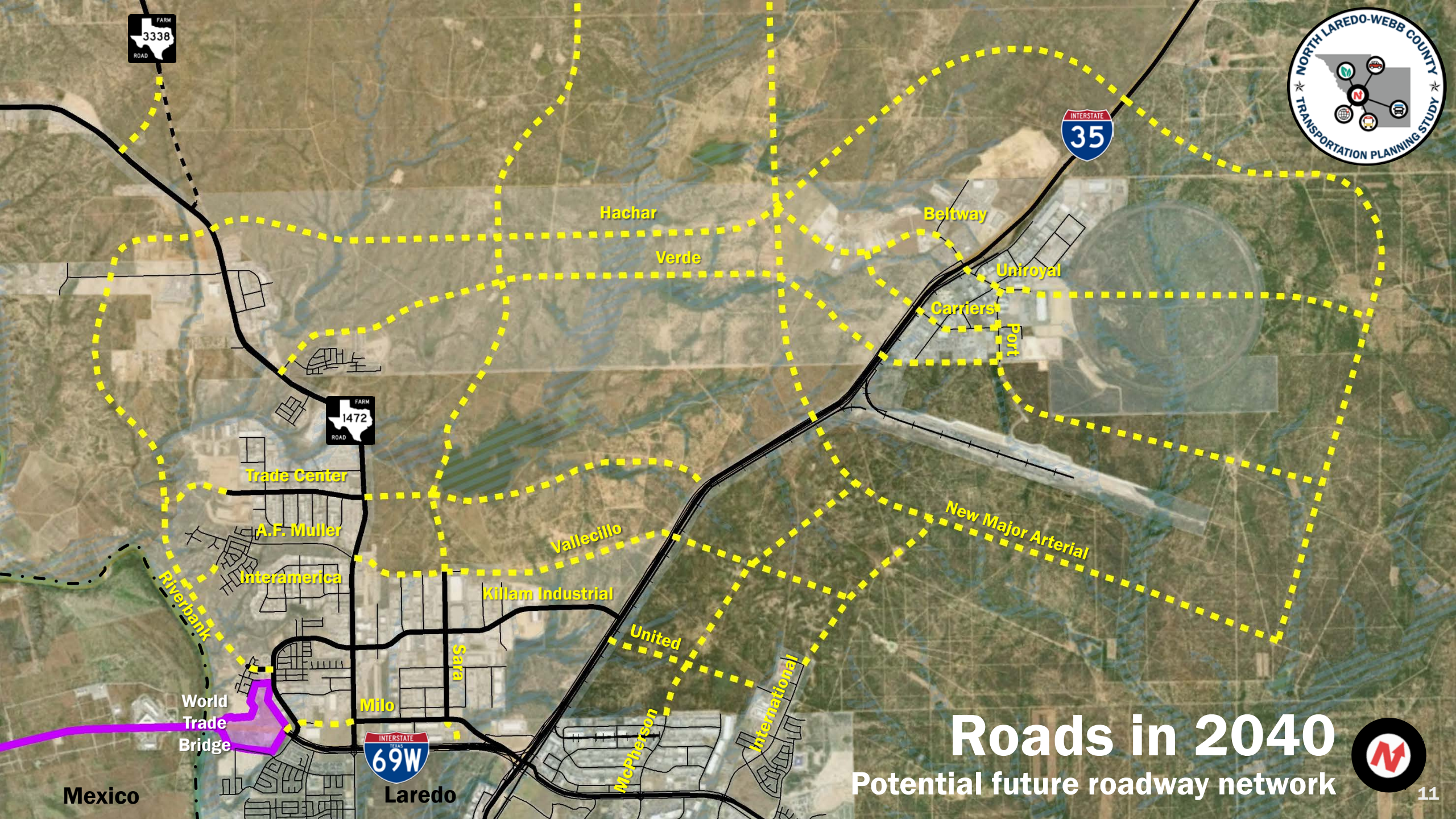




Planned New Roads

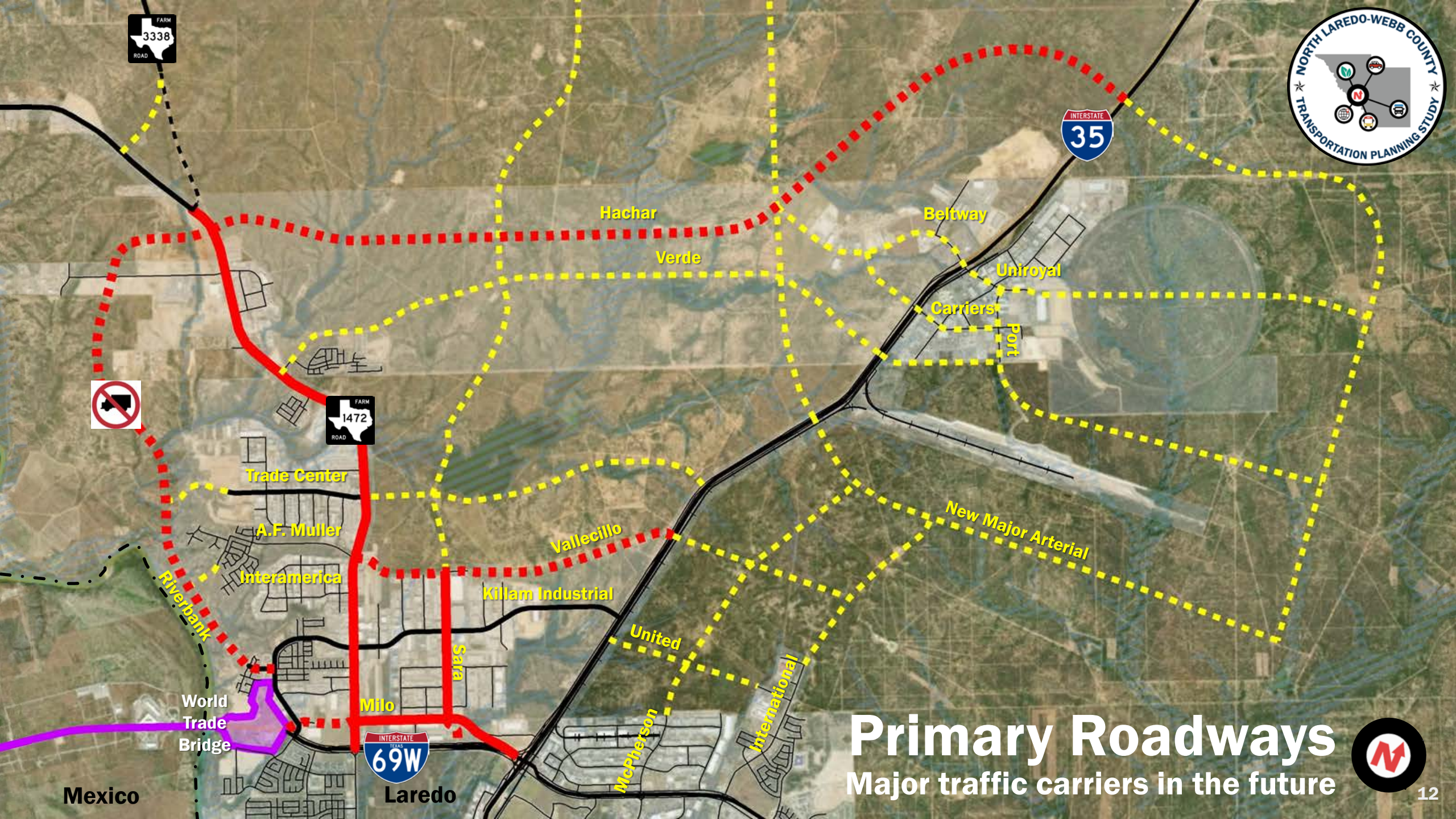
Vallecillo Rd. and Hachar Pkwy.

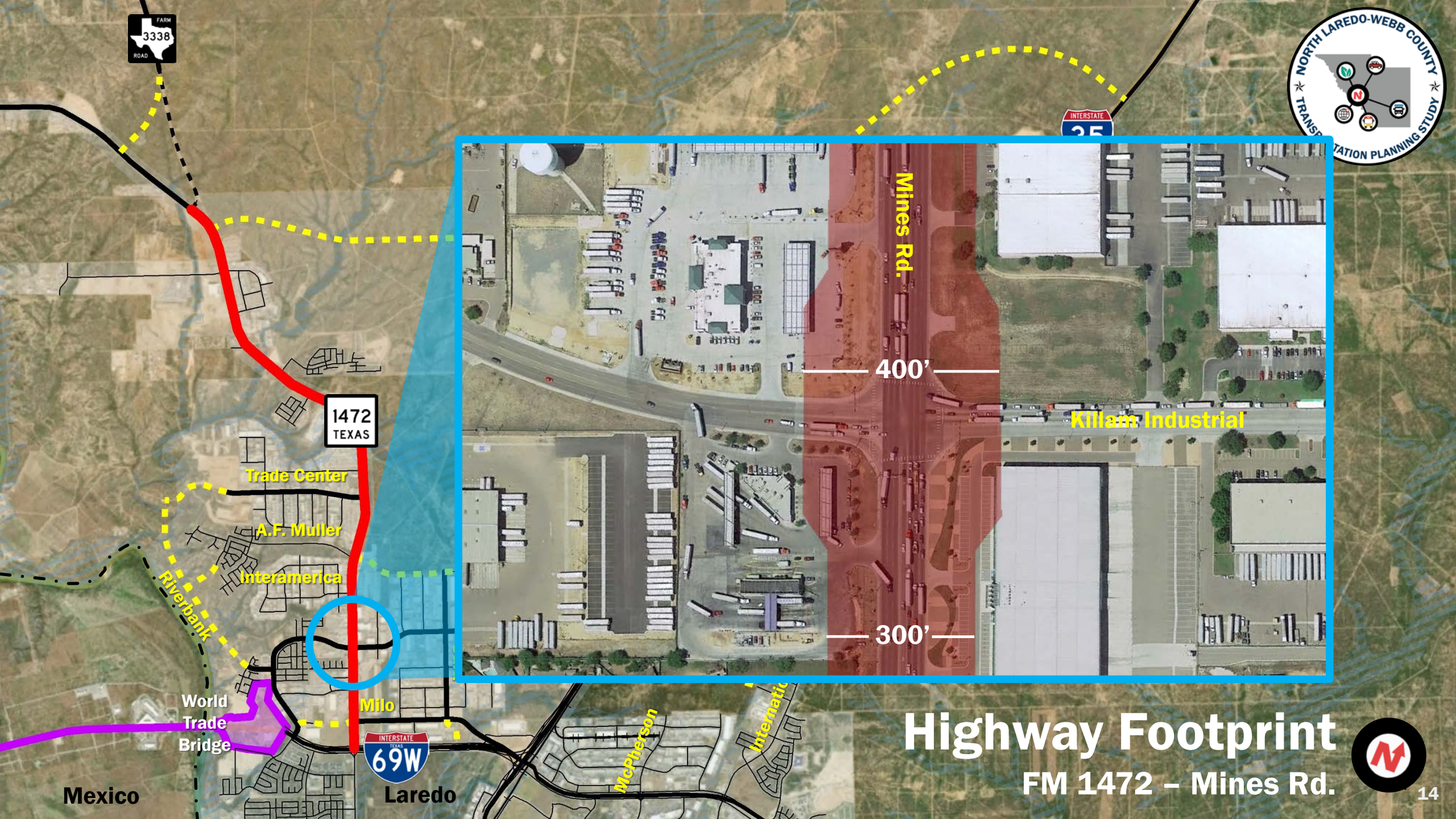




Roads in 2040
Potential future roadway network

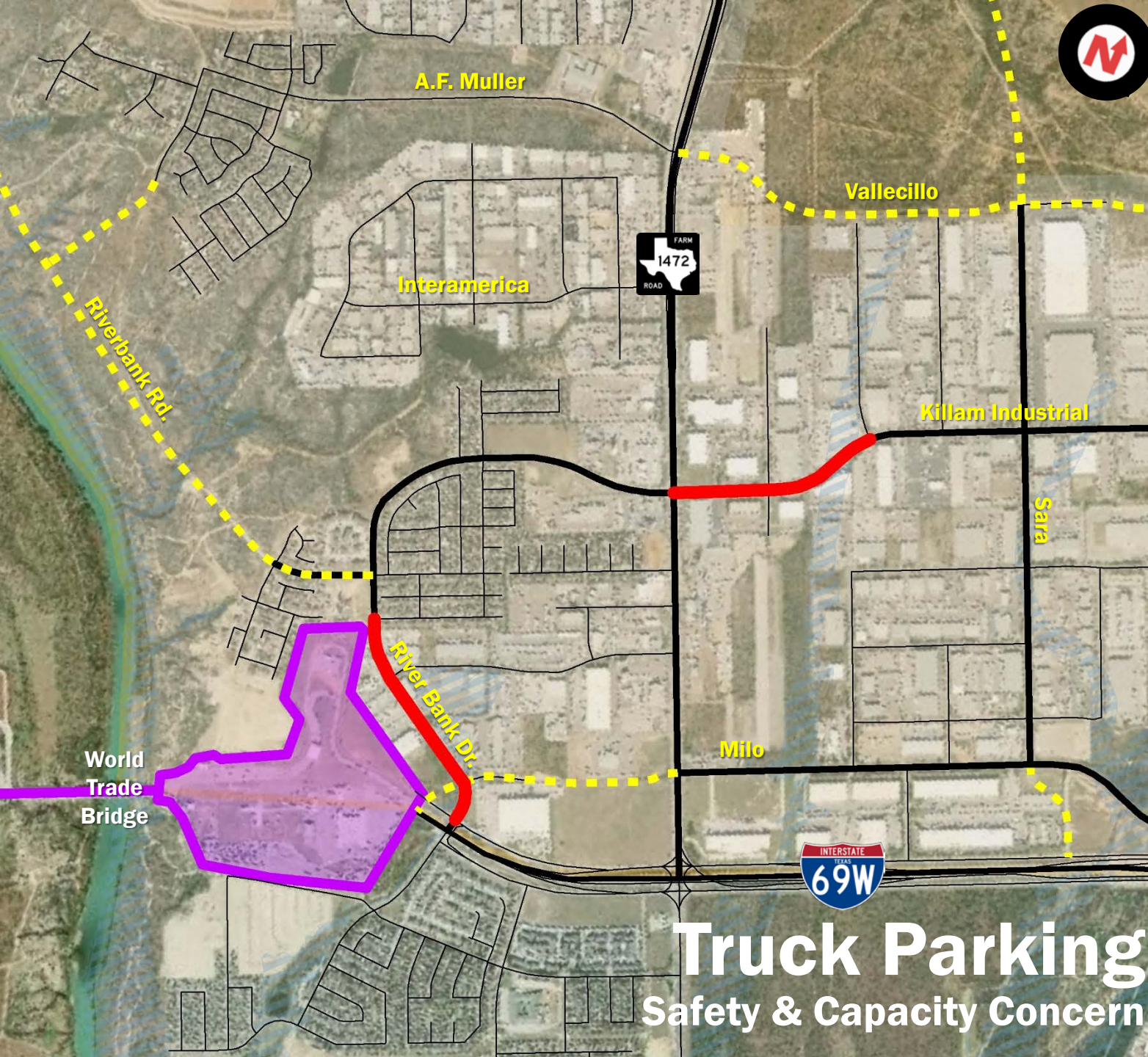






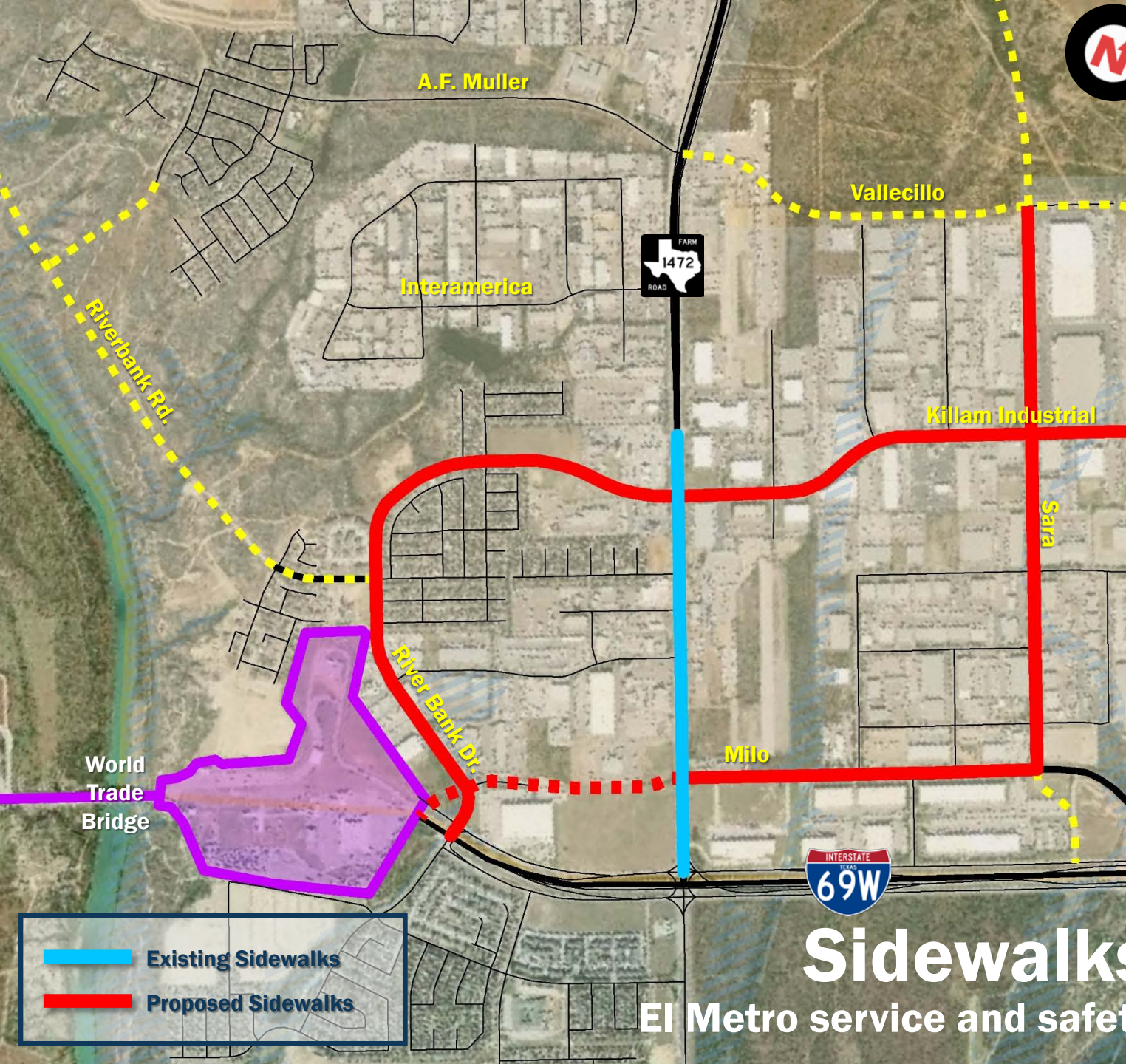
Highway Footprint
FM 1472 – Mines Rd.





Truck Parking

Safety & Capacity Concern



Killam Industrial



River Bank



Tell us what you think!

Submit a comment by:

- Complete a written comment card at tonight's meeting
- Provide your comments on the maps
- Email your comment to **NLaredoWebbStudy@hntb.com**
- Mail your comments to:
HNTB - Attn: Cynthia Coss
RE: NLWC Transportation Study
9601 McAllister Freeway, Suite 1001
San Antonio, TX 78216

Deadline for comments: November 21, 2019