



Webb Co.-Laredo RMA Public Hearing Summary

Held on February 4, 2014 at the TxDOT Laredo
District Headquarters

TxDOT – Laredo District

TABLE OF CONTENTS

Section 1	Public Hearing Summary and Analysis
Section 2	Photos Taken at the Hearing
Section 3	Public Hearing Newspaper Advertisements, Invitation Letters and News Coverage
Section 4	Public Hearing Hand-Outs and Attendance Sign-In Sheets
Section 5	Public Hearing Exhibits, Layouts, Presentation & Hearing Transcript
Section 6	Comments and Responses

SECTION 1

PUBLIC HEARING SUMMARY AND ANALYSIS

City: Laredo, Texas

District and County: TxDOT – Laredo District, Webb County

Time and Place Held: 5:00 to 7:00 PM on Tuesday, February 4, 2014 at the TxDOT – Laredo District Headquarters Meeting Room, Laredo, Texas 78043. The Public Hearing was started at 6:00 PM.

Proposal: Webb County and the City of Laredo, in conjunction with the Texas Department of Transportation, has petitioned TxDOT and the Texas Transportation Commission to form the Webb County-City of Laredo Regional Mobility Authority (Webb Co.-Laredo RMA).

The purpose of this public hearing was to present the proposed Webb Co.-Laredo RMA to the public for comment as part of the RMA petition process.

RMA Petition Approval: The Webb Co.-Laredo RMA Petition has been reviewed by TxDOT in anticipation of the February 4, 2014 Public Hearing and the eventual Petition approval by the Texas Transportation Commission. It is anticipated that the Petition will be approved by the TTC in its February 27, 2014 meeting that will be held in Laredo.

Notices and Pre-Event Media Articles: The Public Notice was advertised in both English and Spanish in the *Laredo Morning Times* on January 10 and 26, 2014 and in the Texas Register on January 24, 2014. Public Officials and landowners affected by the project were identified and were notified phone calls, e-mails and January 28, 2014 letters (a complete invitation list is attached below in Section 3).

No pre-event news articles (other than the publications of the Public Notice) were published prior to the hearing; however, one local news station included the upcoming Hearing in its early show updates.

Public Hearing Presiding Officer: Melisa D. Montemayor – TxDOT Laredo District Administrator

Post-Event Media Articles: No post-event newspaper articles were published within the 10-day post-event comment period.

Attendance: A total of 36 people were present at the hearing. Of these persons, seventeen were private citizens; five were Webb County or City of Laredo officials or staff; fourteen were TxDOT Laredo District staff. In addition, there was one court reporter and two persons from the local TV/print media. One elected official, Webb County Judge Danny Valdez, attended the hearing. The Laredo City Manager, Carlos Villarreal, also attended to represent the Laredo City Council.

Exhibits:

- Excerpts from the Webb Co.-Laredo RMA Petition (city council and county precinct boundaries that would be represented by RMA board members; potential funding; primary project costs / map).
- Larger scale view of the preliminary schematic/plan views of the Loop 20/US 59/Future IH-69 corridor from 2007 and 2013 to illustrate the long-term efforts on improving this portion of Loop 20.
- The typical section for the RMA proposed Loop 20/US 59/Future IH-69 project.

There was a formal presentation, as well as informal one-on-one discussions with the persons attending the hearing.

Verbal Questions, Comments Recorded During the Public Hearing: Verbal comments were centered on the support of the proposed Webb Co.-Laredo RMA by the five individuals making comments at the Hearing. Persons making comments included:

- Webb County Judge Danny Valdez; Carlos Villarreal;
- Laredo City Manager on the behalf of the Laredo City Council;
- Mr. Jorge Verduzco, a leader of the I-69 Alliance group;
- Mr. Gerry Schwebel, president of IBC Bank headquartered in Laredo;
- One member of the general public.

Overall, all verbal comments were in strong support for the Webb Co.-Laredo RMA. One person indicated reservations about the upgrade of Loop 20 would lead to tolling and that the construction of the Laredo Outer Loop project would help to separate the commercial truck traffic from the personal vehicle traffic on Loop 20.

Response letters were mailed on February 20, 2014 to the persons who made verbal comments at the hearing. The letters thanked them for their participation at the public hearing

and answering the question about tolling and the selection of the primary RMA sponsored project. These verbal comments are included on pages 16-28 of the hearing transcript; copies of these response letters are included in Section 6.

Material Requests and Responses:

One affected property requested a copy of the Hearing presentation on February 10th; the requested information was sent out on in electronic format that same day.

Written Comments and Responses: Two sets of written comments were received via e-mail and are summarized below.

- Mr. Mario Pena provided strong support for the formation of the Webb Co.-Laredo RMA but wanted to see more effective outreach for this and future outreach events.
- Mr. Radcliffe Killam II provided strong support for the formation of the Webb Co.-Laredo RMA. He noted that his family company's interests would be greatly affected by the proposed RMA's primary project (upgrade of northern Loop 20). Mr. Killam also would like to see more outreach by the City and County as the RMA board members are selected and the innovative funding mechanisms are developed by the City, the County and the RMA.

Overall Public Comments: Verbal and written comments by the public were definitely in strong support of the proposed Webb Co.-Laredo RMA and no verbal or written comments have been received in opposition.

Recommendation: The Webb County-City of Laredo RMA Petitioners, with the concurrence of the TxDOT, recommends that the project move forward as no substantial public opposition has been expressed to date.

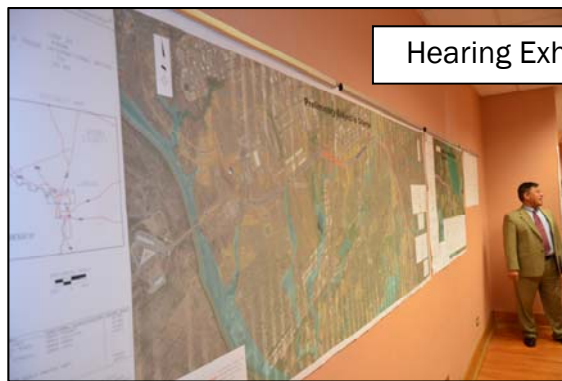
SECTION 2 PHOTOS TAKEN AT THE HEARING



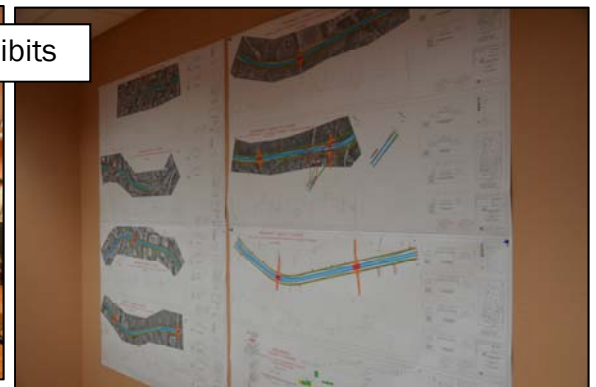
Laredo District Hearing Staff



Laredo District Staff
Discussing the Webb Co.-
Laredo RMA with Laredo
Morning Times Reporter



Hearing Exhibits



Informal Discussions with the Public Before
and After the Formal Hearing Presentation



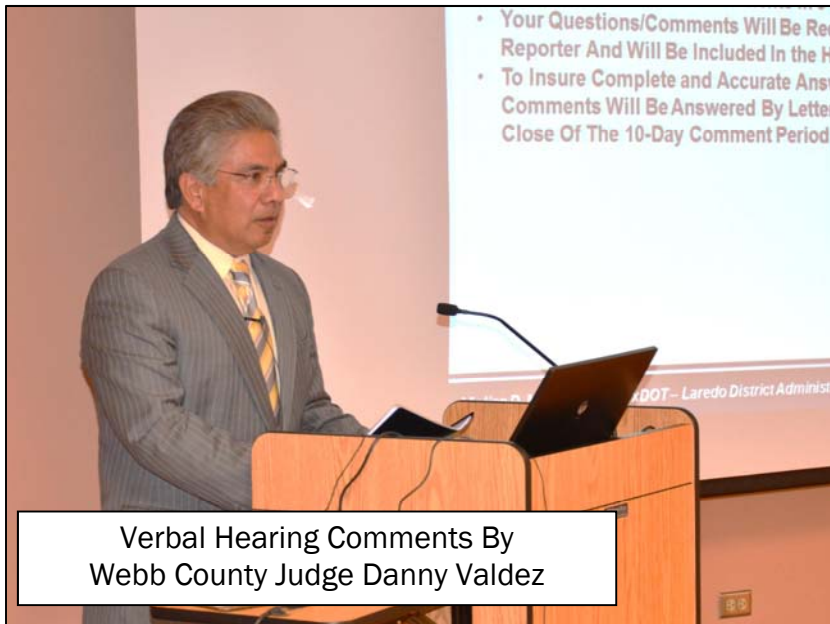
Melisa Montemayor – Laredo District Administrator Presiding At The Formal Hearing Presentation



The Formal Hearing Presentation Audience



Public Comments Received During the Formal Hearing Presentation



SECTION 3

Public Hearing Newspaper / Texas Register Notices and Invitation Letters

(No News Articles Were Published)

FRIDAY, JANUARY 10, 2014

HELP WANTED 122

Customs Agency IMZA FORWARDING, INC.

Requires:
Warehouse Man
Please send your
resume to
empleo@asmurris.com.mx
or fax (956) 791-6390
or contact the human
resources department

Hiring CDL Drivers.

Flexible Runs, .35
cpm. **MINIMUM** 1
year experience.
Call

(956) 231-7260,
(956) 290-5790

PETS & SUPPLIES 128

Pug puppy 1M, 10 weeks
old, 1st shots, \$300.
(956) 568-4553

Schnauzer puppy, 1 m, 2080.
months, \$200.00 call
956-764-9959

Teacup French Poodles,
male and females, 1st
shots, tall clipped,
dewormed, \$280. Located
in Laredo! 214-418-4300

Tiger-striped Boxers, 2 1/2
months old, 2M/1F, clipped,
ped tall, dewormed, \$250, a/c,
each. (956) 326-6381

UKC Reg purple ribbon
Pit Bull puppies, 4F
\$175. (956) 337-8851

Vendo perrita pastor
man de 2 meses,
desparasitada y vacunada

Enrollment.

L-63

Enrollment.

Enrollment.

Enrollment.

Enrollment.

Enrollment.

Enrollment.

Enrollment.

Enrollment.

Enrollment.

Enrollment.

Enrollment.

Enrollment.

Enrollment.

Enrollment.

Enrollment.

Enrollment.

Enrollment.

Enrollment.

Enrollment.

Enrollment.

Enrollment.

Enrollment.

Enrollment.

Enrollment.

Enrollment.

Enrollment.

Enrollment.

Enrollment.

Enrollment.

Enrollment.

Enrollment.

Enrollment.

Enrollment.

Enrollment.

Enrollment.

Enrollment.

Enrollment.

Enrollment.

Enrollment.

Enrollment.

Enrollment.

Enrollment.

Enrollment.

Enrollment.

Enrollment.

Enrollment.

TRUCKS FOR SALE 198

2006 F 150, double cab,
auto, elec, a/c, \$6,800.
(956) 786-9832

FORD F150 1996
6 cylinder in line, \$1,800.
(956) 744-2268

'08 FORD
ESCAPE,
4DR, AUTO,
A/C, \$9,500.00
CALL 727-9907

'10 CHEVY
IMPALA, 4DR,
AUTO, A/C,

'10 CHEVY
IMPALA, 4DR,
AUTO, A/C,

'10 CHEVY
IMPALA, 4DR,
AUTO, A/C,

'10 CHEVY
IMPALA, 4DR,
AUTO, A/C,

'10 CHEVY
IMPALA, 4DR,
AUTO, A/C,

'10 CHEVY
IMPALA, 4DR,
AUTO, A/C,

'10 CHEVY
IMPALA, 4DR,
AUTO, A/C,

'10 CHEVY
IMPALA, 4DR,
AUTO, A/C,

'10 CHEVY
IMPALA, 4DR,
AUTO, A/C,

'10 CHEVY
IMPALA, 4DR,
AUTO, A/C,

'10 CHEVY
IMPALA, 4DR,
AUTO, A/C,

'10 CHEVY
IMPALA, 4DR,
AUTO, A/C,

'10 CHEVY
IMPALA, 4DR,
AUTO, A/C,

'10 CHEVY
IMPALA, 4DR,
AUTO, A/C,

'10 CHEVY
IMPALA, 4DR,
AUTO, A/C,

'10 CHEVY
IMPALA, 4DR,
AUTO, A/C,

'10 CHEVY
IMPALA, 4DR,
AUTO, A/C,

'10 CHEVY
IMPALA, 4DR,
AUTO, A/C,

'10 CHEVY
IMPALA, 4DR,
AUTO, A/C,

'10 CHEVY
IMPALA, 4DR,
AUTO, A/C,

'10 CHEVY
IMPALA, 4DR,
AUTO, A/C,

'10 CHEVY
IMPALA, 4DR,
AUTO, A/C,

'10 CHEVY
IMPALA, 4DR,
AUTO, A/C,

'10 CHEVY
IMPALA, 4DR,
AUTO, A/C,

'10 CHEVY
IMPALA, 4DR,
AUTO, A/C,

'10 CHEVY
IMPALA, 4DR,
AUTO, A/C,

'10 CHEVY
IMPALA, 4DR,
AUTO, A/C,

'10 CHEVY
IMPALA, 4DR,
AUTO, A/C,

'10 CHEVY
IMPALA, 4DR,
AUTO, A/C,

'10 CHEVY
IMPALA, 4DR,
AUTO, A/C,

'10 CHEVY
IMPALA, 4DR,
AUTO, A/C,

'10 CHEVY
IMPALA, 4DR,
AUTO, A/C,

'10 CHEVY
IMPALA, 4DR,
AUTO, A/C,

'10 CHEVY
IMPALA, 4DR,
AUTO, A/C,

'10 CHEVY
IMPALA, 4DR,
AUTO, A/C,

'10 CHEVY
IMPALA, 4DR,
AUTO, A/C,

'10 CHEVY
IMPALA, 4DR,
AUTO, A/C,

'10 CHEVY
IMPALA, 4DR,
AUTO, A/C,

'10 CHEVY
IMPALA, 4DR,
AUTO, A/C,

'10 CHEVY
IMPALA, 4DR,
AUTO, A/C,

'10 CHEVY
IMPALA, 4DR,
AUTO, A/C,

'10 CHEVY
IMPALA, 4DR,
AUTO, A/C,

'10 CHEVY
IMPALA, 4DR,
AUTO, A/C,

'10 CHEVY
IMPALA, 4DR,
AUTO, A/C,

'10 CHEVY
IMPALA, 4DR,
AUTO, A/C,

'10 CHEVY
IMPALA, 4DR,
AUTO, A/C,

'10 CHEVY
IMPALA, 4DR,
AUTO, A/C,

'10 CHEVY
IMPALA, 4DR,
AUTO, A/C,

'10 CHEVY
IMPALA, 4DR,
AUTO, A/C,

'10 CHEVY
IMPALA, 4DR,
AUTO, A/C,

'10 CHEVY
IMPALA, 4DR,
AUTO, A/C,

'10 CHEVY
IMPALA, 4DR,
AUTO, A/C,

'10 CHEVY
IMPALA, 4DR,
AUTO, A/C,

CARS FOR SALE 200

1997 Chevy Lumina, very
good condition, \$2,900.
285-0879

2001 Volkswagen Jetta,
excellent condition, 5
speed standard, new tires
\$2,950. (956) 763-4734

2002 Mazda Protege
automatic, 4 door, 4
cylinder, excelentes
condiciones, \$3,000.
(956) 898-2303

2002 Pontiac
Aztec, extra limpia,
equipada, toda
elctrica, 110mil

2002 Pontiac
Aztec, extra limpia,
equipada, toda
elctrica, 110mil

2002 Pontiac
Aztec, extra limpia,
equipada, toda
elctrica, 110mil

2002 Pontiac
Aztec, extra limpia,
equipada, toda
elctrica, 110mil

2002 Pontiac
Aztec, extra limpia,
equipada, toda
elctrica, 110mil

2002 Pontiac
Aztec, extra limpia,
equipada, toda
elctrica, 110mil

2002 Pontiac
Aztec, extra limpia,
equipada, toda
elctrica, 110mil

2002 Pontiac
Aztec, extra limpia,
equipada, toda
elctrica, 110mil

2002 Pontiac
Aztec, extra limpia,
equipada, toda
elctrica, 110mil

2002 Pontiac
Aztec, extra limpia,
equipada, toda
elctrica, 110mil

2002 Pontiac
Aztec, extra limpia,
equipada, toda
elctrica, 110mil

2002 Pontiac
Aztec, extra limpia,
equipada, toda
elctrica, 110mil

2002 Pontiac
Aztec, extra limpia,
equipada, toda
elctrica, 110mil

2002 Pontiac
Aztec, extra limpia,
equipada, toda
elctrica, 110mil

2002 Pontiac
Aztec, extra limpia,
equipada, toda
elctrica, 110mil

2002 Pontiac
Aztec, extra limpia,
equipada, toda
elctrica, 110mil

2002 Pontiac
Aztec, extra limpia,
equipada, toda
elctrica, 110mil

2002 Pontiac
Aztec, extra limpia,
equipada, toda
elctrica, 110mil

2002 Pontiac
Aztec, extra limpia,
equipada, toda
elctrica, 110mil

2002 Pontiac
Aztec, extra limpia,
equipada, toda
elctrica, 110mil

2002 Pontiac
Aztec, extra limpia,
equipada, toda
elctrica, 110mil

2002 Pontiac
Aztec, extra limpia,
equipada, toda
elctrica, 110mil

2002 Pontiac
Aztec, extra limpia,
equipada, toda
elctrica, 110mil

2002 Pontiac
Aztec, extra limpia,
equipada, toda
elctrica, 110mil

2002 Pontiac
Aztec, extra limpia,
equipada, toda
elctrica, 110mil

2002 Pontiac
Aztec, extra limpia,
equipada, toda
elctrica, 110mil

2002 Pontiac
Aztec, extra limpia,
equipada, toda
elctrica, 110mil

2002 Pontiac
Aztec, extra limpia,
equipada, toda
elctrica, 110mil

2002 Pontiac
Aztec, extra limpia,
equipada, toda
elctrica, 110mil

2002 Pontiac
Aztec, extra limpia,
equipada, toda
elctrica, 110mil

2002 Pontiac
Aztec, extra limpia,
equipada, toda
elctrica, 110mil

2002 Pontiac
Aztec, extra limpia,
equipada, toda
elctrica, 110mil

2002 Pontiac
Aztec, extra limpia,
equipada, toda
elctrica, 110mil

2002 Pontiac
Aztec, extra limpia,
equipada, toda
elctrica, 110mil

2002 Pontiac
Aztec, extra limpia,
equipada, toda
elctrica, 110mil

2002 Pontiac
Aztec, extra limpia,
equipada, toda
elctrica, 110mil

2002 Pontiac
Aztec, extra limpia,
equipada, toda
elctrica, 110mil

2002 Pontiac
Aztec, extra limpia,
equipada, toda
elctrica, 110mil

2002 Pontiac
Aztec, extra limpia,
equipada, toda
elctrica, 110mil

2002 Pontiac
Aztec, extra limpia,
equipada, toda
elctrica, 110mil

2002 Pontiac
Aztec, extra limpia,
equipada, toda
elctrica, 110mil

2002 Pontiac
Aztec, extra limpia,
equipada, toda
elctrica, 110mil

2002 Pontiac
Aztec, extra limpia,
equipada, toda
elctrica, 110mil

2002 Pontiac
Aztec, extra limpia,
equipada, toda
elctrica, 110mil

2002 Pontiac
Aztec, extra limpia,
equipada, toda
elctrica, 110mil

2002 Pontiac
Aztec, extra limpia,
equipada, toda
elctrica, 110mil

2002 Pontiac
Aztec, extra limpia,
equipada, toda
elctrica, 110mil

2002 Pontiac
Aztec, extra limpia,
equipada, toda
elctrica, 110mil

2002 Pontiac
Aztec, extra limpia,
equipada, toda
elctrica, 110mil

2002 Pontiac
Aztec, extra limpia,
equipada, toda
elctrica, 110mil

2002 Pontiac
Aztec, extra limpia,
equipada, toda
elctrica, 110mil

2002 Pontiac
Aztec, extra limpia,
equipada, toda
elctrica, 110mil

2002 Pontiac
Aztec, extra limpia,
equipada, toda
elctrica, 110mil

CARS FOR SALE 200

2006 BMW 525i, 104K
Miles, excellent condition,
1 owner, \$11,500.
956-286-1089

2006 Ford Mustang V6
Mileage 88,000
\$6,500 OBO
Call: (936) 404-6588
Cell: (936) 404-9488

2008 Mercedes
Benz 350, 6
cyl., auto., a/c,
leather, all
power, \$14,500.
(956) 771-9416

2008 Mercedes
Benz 350, 6
cyl., auto., a/c,
leather, all
power, \$14,500.
(956) 771-9416

2008 Mercedes
Benz 350, 6
cyl., auto., a/c,
leather, all
power, \$14,500.
(956) 771-9416

2008 Mercedes
Benz 350, 6
cyl., auto., a/c,
leather, all
power, \$14,500.
(956) 771-9416

2008 Mercedes
Benz 350, 6
cyl., auto., a/c,
leather, all
power, \$14,500.
(956) 771-9416

2008 Mercedes
Benz 350, 6
cyl., auto., a/c,
leather, all
power, \$14,500.
(956) 771-9416

2008 Mercedes
Benz 350, 6
cyl., auto., a/c,
leather, all
power, \$14,500.
(956) 771-9416

2008 Mercedes
Benz 350, 6
cyl., auto., a/c,
leather, all
power, \$14,500.
(956) 771-9416

2008 Mercedes
Benz 350, 6
cyl., auto., a/c,
leather, all
power, \$14,500.
(956) 771-9416

2008 Mercedes
Benz 350, 6
cyl., auto., a/c,
leather, all
power, \$14,500.
(956) 771-9416

2008 Mercedes
Benz 350, 6
cyl., auto., a/c,
leather, all
power, \$14,500.
(956) 771-9416

2008 Mercedes
Benz 350, 6
cyl., auto., a/c,
leather, all
power, \$14,500.
(956) 771-9416

2008 Mercedes
Benz 350, 6
cyl., auto., a/c,
leather, all
power, \$14,500.
(956) 771-9416

2008 Mercedes
Benz 350, 6
cyl., auto., a/c,
leather, all
power, \$14,500.
(956) 771-9416

2008 Mercedes
Benz 350, 6
cyl., auto., a/c,
leather, all
power, \$14,500.
(956) 771-9416

2008 Mercedes
Benz 350, 6
cyl., auto., a/c,
leather, all
power, \$14,500.
(956) 771-9416

2008 Mercedes
Benz 350, 6
cyl., auto., a/c,
leather, all
power, \$14,500.
(956) 771-9416

2008 Mercedes
Benz 350, 6
cyl., auto., a/c,
leather, all
power, \$14,500.
(956) 771-9416

2008 Mercedes
Benz 350, 6
cyl., auto., a/c,
leather, all
power, \$14,500.
(956) 771-9416

2008 Mercedes
Benz 350, 6
cyl., auto., a/c,
leather, all
power, \$14,500.
(956) 771-9416

2008 Mercedes
Benz 350, 6
cyl., auto., a/c,
leather, all
power, \$14,500.
(956) 771-9416

2008 Mercedes
Benz 350, 6
cyl., auto., a/c,
leather, all
power, \$14,500.
(956) 771-9416

2008 Mercedes
Benz 350

Warehouse for Rent, month.
WS ft. \$1500/month.
B-4, 956-724-8469.

*****725-7686*****
Credit check each adult.
No pets, Application.

Water
L-2

SUNDAY, JANUARY 26, 2014

4E | LAREDO MORNING TIMES

SPORTING GOODS 142

Browning X-Bolt
Hunter 308 Rifle, (unfired)
with accessories, \$800.
(956)235-2247

Fishing Club, 10 miles East
of Laredo. Playground.
Details. (956) 324-5569

From private collection:
New AR15, Government
(M16) style 5.56 Cal HBAR

TRUCKS FOR SALE 198

08 F350 6.4 DIESEL
AUTOMATICA 4X4 LARIAT
CREW CAB, FLAT BED
EXCELENTE ESTADO
\$17,500 CBO.
956 237-8412

CARS FOR SALE 200

2001 Dodge 100,
\$2,500 OBO.
85-2699

2002 Cadillac Escalade,
\$5,500.
(956) 999-0911

2005 Navigator, negra,
70K millas, rines 22", DVD,
\$12,500. (956)237-1419

CARS FOR SALE 200

2001 Ford Escort 4 cil.,
transmision standard, 2
puertas, economico en
gas, \$1,400 OBO.
(956) 237-6542

2003 Jeep Liberty 4x4,
6cyl., automatic, a/c,
\$5,200. Financing Availa-
ble. (956) 775-4695

2009 Dodge Ram RT, 4x4,
4 door, 95K miles,
\$18,500. (956) 324-0667

98" Dodge Ram 1500 V8,
automatic, grey, \$1,800.
(956) 744-2268

CARS FOR SALE 200

2001 BMW 325i, regis-
trado en Texas, buenas
condiciones, \$4,500.
(956)242-3364

2003 Jeep Liberty 4x4,
6cyl., automatic, a/c,
\$5,200. Financing Availa-
ble. (956) 775-4695

2009 Dodge Ram RT, 4x4,
4 door, 95K miles,
\$18,500. (956) 324-0667

98" Dodge Ram 1500 V8,
automatic, grey, \$1,800.
(956) 744-2268

CARS FOR SALE 200

2006 Toyota Corolla, good
condition, \$3,200 OBO.
(956) 775-9573

2007 Mazda 3, 4 puertas,
6 cyl., a/c, 80K mi.,
\$5,700. (956) 645-3089

Se vende
Sterling p
Informes

Refrig, wash/dryer
washer, boilers:

ESTEVIS/ARF
REPAI

washer, dryer
dishwasher & ref
for Sears over

(956)763-5
717-84

Huertas Appliances
Washers, Dryers,
Etc. 10 Years Exp

Sears 956-235

Reparación, Comp
Refrigeradores,
Secadoras, y

Trabajo Gara
(956) 235

Reparo, lavad/se
refrig. y compro

Tony 220-4681

CARPENTRY

Roberto Pacheco
Remodel, electric
roofing, painting

exterior. Call 744

333-24

Kitchen Ca

Bookshel

Wood & Form

Remo

(956)324

SAL'S REMO

Carpentry, Paint

exterior, Kitchen

8 tons, roofing, tile

ing, plumbing, elec

Welding, Back-h

Call Salvi

956-744

Please ca

Webb County, City of Laredo and Texas Department of Transportation - Laredo District Public Hearing On The Formation of the Webb County - City of Laredo Regional Mobility Authority

The Texas Department of Transportation ("department") will conduct a public hearing to receive comments on the proposed formation of the Webb County - City of Laredo Regional Mobility Authority (Webb County - Laredo RMA) by Webb County and the City of Laredo ("RMA petitioners").

On January 8, 2014, the RMA petitioners filed a revised petition requesting authorization from the Texas Transportation Commission to form the Webb County - Laredo RMA. As proposed, the Webb County - Laredo RMA would encompass the boundaries of Webb County, and would be governed by a board of directors consisting of nine members. Four of the nine board members would be appointed by the Webb County Commissioners Court and four board members would be appointed by the Laredo City Council. In addition to the eight board members appointed by the county and city, the presiding officer of the board will be appointed by the Governor. The proposed initial project of the Webb County - Laredo RMA is an approximately 10.8 mile project to upgrade Loop 20 to interstate standards from US 59 to the World Trade International Bridge IV. This project will upgrade Loop 20 from the existing US 59 overpass to the World Trade International Bridge IV to an urban expressway with continuous frontage roads and mainline overpasses at the major street and highway intersections (i.e. Airport Drive, Jacaman Road, University Boulevard, Del Mar Boulevard, Shiloh Road, International Boulevard and the mainlines over the IH 35 mainlines as well as two direct connectors to IH 35). Additional right-of-way will be required from approximately International Boulevard to south of Airport Drive.

This major upgrade of Loop 20 is anticipated to proceed in phases and will involve changing the official highway designation of this portion of Loop 20 to US 59. As a result of this change, US 59 from Loop 20 to IH 35 in central Laredo would, subject to the approval of the Texas Transportation Commission, be re-designated as Business US 59. It is the intent of Webb County, the City of Laredo and TxDOT that this portion of Loop 20/US 59 would become a part of the western leg of IH 69 when this roadway is upgraded to interstate roadway standards. TxDOT intends to submit an application to designate this portion of Loop 20/US 59 as IH 69 after the upgrade is complete.

Pursuant to Title 43, Texas Administrative Code, §26.12, the department will hold a public hearing on the date, time, and location indicated below to receive public comments and assess the level of public support concerning the proposed Webb County - Laredo RMA:

When: Tuesday, February 4, 2014
Open House - 5:00 to 6:00 PM Hearing / After Hearing to 7:00 PM
Hearing - 6:00 PM
Where: Texas Department of Transportation
Laredo District Headquarters Office Large Meeting Room
1817 Bob Bullock Loop, Laredo, Texas 78043

All interested persons are invited to attend this Public Hearing and to provide input. Local officials, their staff members and Laredo District staff will be available before and after the Public Hearing (from 5:00 to 7:00 PM) to informally discuss the Webb County - Laredo RMA formation as well as the initial project for the upgrade of Loop 20/US 59 to interstate highway standards.

Those desiring to make official comments may register starting at 5:00 PM. Oral and written comments may be presented at the public hearing, or written comments may be submitted by mail or electronic mail. To be included in the official record of the public hearing, written comments must be received by 5:00 PM on February 13, 2014. Written comments should be mailed to Melissa D. Montemayor, Laredo District Administrator, Texas Department of Transportation, 1817 Bob Bullock Loop, Laredo, Texas 78043. Comments submitted via electronic mail should be sent to Melissa.Montemayor@TXDOT.gov.

Persons who need special communications or other special needs should contact: Raul Leal, the Texas Department of Transportation - Laredo District Public Information Officer, at (956) 712-7416 / e-mail: Raul.Leal@TXDOT.gov at least two days before the hearing so that appropriate arrangements can be made. Spanish speaking staff will be present at this hearing. This Public Hearing will be documented in a certified verbatim record.

Copies of the draft Webb County - Laredo RMA petition that contains more detailed information will be available at the office of the Webb County Judge Danny Valdez (Webb County Courthouse, 1000 Houston Street - Third Floor, Laredo, Texas), the office of the City of Laredo Mayor Raul Salinas (1110 Houston Street, Laredo, Texas), and the Texas Department of Transportation - Laredo District Headquarters Office (1817 Bob Bullock Loop, Laredo, Texas). Copies of the petition may also be requested by contacting Raul Leal, the Texas Department of Transportation - Laredo District Public Information Officer, at (956) 712-7416 / Raul.Leal@TXDOT.gov.

The department will also public a notice of the Public Hearing in the Texas Register.

Condado de Webb, Ciudad de Laredo y El Departamento De Transporte de Texas Audencia Pública Sobre la Formación de Una Condado de Webb y la Ciudad de Laredo Autoridad de Movilidad Regional

El Departamento De Transporte de Texas ("TxDOT") llevará a cabo una audiencia pública para recibir comentarios sobre la formación de una Autoridad de Movilidad Regional (Condado de Webb - Laredo RMA) propuesta por el Condado de Webb y la ciudad de Laredo ("Peticionarios del RMA").

El 8 de enero del 2014, los peticionarios del RMA presentaron una revisión a la petición solicitando la autorización de la Comisión de Transportes de Texas para formar el Condado de Webb - Laredo RMA. En esta petición, el Condado de Webb - Laredo RMA abarcaría los límites del Condado de Webb y se regiría por una junta directiva compuesta por nueve miembros. Cuatro de los nueve miembros del Consejo serían designados por los Comisionados del Condado de Webb y cuatro miembros del Consejo sería designado por el Concejo de Laredo. Además de los ocho miembros del Consejo nombrados por el condado y la ciudad, el Presidente de la Junta Directiva será nombrado por el gobernador. El proyecto inicial propuesto por el Condado Webb - Laredo RMA es uno de aproximadamente 10.8 millas. Este consiste en la actualización a carretera interestatal del Loop 20 desde el Puente Internacional del Comercio Mundial hasta la Carretera US 59. Este proyecto convertirá la Carretera Loop 20 desde el puente de la carretera US 59 hasta el Puente Internacional del Comercio Mundial en una autopista urbana tipo interestatal con caminos de acceso laterales. Además incluye pasos a desnivel en las principales intersecciones y carreteras (Airport Drive, Jacaman Road, University Boulevard, Del Mar Boulevard, Shiloh Road, International Boulevard y el paso a desnivel sobre la IH 35, así como dos conectores directos para IH 35). Esta actualización del Loop 20 se procederá en fases y propondrá cambiar la designación oficial de una porción de la carretera Loop 20 a US 59. Como resultado de este cambio, la actual carretera US 59 desde el Loop 20 a IH 35 en Laredo sería re-designada como Business 59. La intención del TxDOT, la ciudad de Laredo y TxDOT es que esta porción del Loop 20 se convertiría en una parte de la futura autopista IH 69-occidental. Para esto será necesario adquirir derecho de vía adicional desde aproximadamente International Boulevard hacia al sur del aeropuerto.

En virtud del título 43, §26.12, del código administrativo de Texas, el departamento celebrará una audiencia pública en la fecha, hora y lugar indicados a continuación para recibir comentarios públicos y evaluar el nivel de apoyo del público con respecto a la propuesta del Condado de Webb - Laredo RMA:

Cuando: Martes, Febrero 4, del 2014
Open House - 5:00 a 6:00 PM Audiencia / Después de la Audiencia hasta las 7:00 PM
Audiencia - 6:00 PM
Dónde: Texas Department of Transportation
Laredo District Headquarters Office Large Meeting Room
1817 Bob Bullock Loop, Laredo, Texas 78043

Todos los interesados están invitados a asistir a esta audiencia pública y aportar sus comentarios. Funcionarios locales y personal de TxDOT del distrito de Laredo estará disponible antes y después de la audiencia pública (de 5:00 a 7:00 PM) para discutir informalmente la formación del Condado de Webb - Laredo RMA, así como el proyecto inicial de la actualización de Loop 20 / US 59 a autopista interestatal.

Aquellos que deseen hacer comentarios oficiales podrán registrarse a partir de las 5:00 PM. Comentarios orales y escritos pueden ser presentados en la audiencia pública, o por escrito a través de correo postal o correo electrónico. Para que sus comentarios puedan ser incluidos en el registro oficial de la audiencia pública, estos deben ser recibidos antes de las 5:00 PM el 13 de febrero del 2014. Comentarios por escrito deberán ser enviados a Melissa D. Montemayor, Administrador del Distrito de Laredo, Texas Department of Transportation, 1817 Bob Bullock Loop, Laredo, Texas 78043. Los comentarios a presentar por correo electrónico deben enviarse a Melissa.Montemayor@TXDOT.gov.

Las personas que requieran de necesidades especiales de comunicación, favor de contactar a: Raul Leal, Departamento de Transporte de Texas - Distrito de Laredo, Oficina de Comunicación pública al (956) 712-7416 / e-mail: Raul.Leal@TXDOT.gov al menos dos días antes de la audiencia para poder hacer los arreglos. Personal que habla español estará presente en esta audiencia. Esta audiencia pública será documentada en un Archivo de Acta.

Copias de la petición con información más detallada están disponibles en la oficina de la Juez del Condado Webb Danny Valdez (Webb County Courthouse, 1000 Houston Street - Tercer piso, Laredo, Texas), en la oficina del alcalde de la ciudad de Laredo Raul Salinas (1110 Houston Street, Laredo, Texas) o en el Departamento de Transporte de Texas - oficina del distrito de Laredo (1817 Bob Bullock Loop, Laredo, Texas). Copias de la petición también pueden solicitarse contactando al Sr. Raul Leal, Departamento de Transporte de Texas - Distrito de Laredo, Oficina de Comunicación pública, al (956) 712-7416 / Raul.Leal@TXDOT.gov.

L-77

also contains information on federally funded projects in rural areas that are not included in any MPO area, and other statewide programs as listed.

Title 23, United States Code, §134 and §135 require each designated MPO and the state, respectively, to develop a TIP and STIP as a condition to securing federal funds for transportation projects under Title 23 or the Federal Transit Act (49 USC §5301, et seq.). Section 134 requires an MPO to develop its TIP in cooperation with the state and affected public transit operators and to provide an opportunity for interested parties to participate in the development of the program. Section 135 requires the state to develop a STIP for all areas of the state in cooperation with the designated MPOs and, with respect to non-metropolitan areas, in consultation with affected local officials, and further requires an opportunity for participation by interested parties as well as approval by the Governor or the Governor's designee.

A copy of the proposed January 2014 Out of Cycle Revisions to the FY 2013-2016 STIP will be available for review, at the time the notice of hearing is published, at each of the department's district offices, at the department's Transportation Planning and Programming Division offices located in Building 118, Second Floor, 118 East Riverside Drive, Austin, Texas, or (512) 486-5033, and on the department's website at: <http://www.txdot.gov/government/programs/stips.html>

Persons wishing to speak at the hearing may register in advance by notifying Lori Morel, Transportation Planning and Programming Division, at (512) 486-5033 not later than Friday, February 14, 2014, or they may register at the hearing location beginning at 9:00 a.m. on the day of the hearing. Speakers will be taken in the order registered. Any interested person may appear and offer comments or testimony, either orally or in writing; however, questioning of witnesses will be reserved exclusively to the presiding authority as may be necessary to ensure a complete record. While any persons with pertinent comments or testimony will be granted an opportunity to present them during the course of the hearing, the presiding authority reserves the right to restrict testimony in terms of time or repetitive content. Groups, organizations, or associations should be represented by only one speaker. Speakers are requested to refrain from repeating previously presented testimony. Persons with disabilities who have special communication or accommodation needs or who plan to attend the hearing may contact the Transportation Planning and Programming Division, at 118 East Riverside Drive, Austin, Texas 78704-1205, (512) 486-5038. Requests should be made no later than three days prior to the hearing. Every reasonable effort will be made to accommodate the needs.

Interested parties who are unable to attend the hearing may submit comments regarding the proposed January 2014 Out of Cycle Revisions to the FY 2013-2016 STIP to Marc Williams, P.E., Director of Planning, P.O. Box 149217, Austin, Texas 78714-9217. In order to be considered, all written comments must be received at the Transportation Planning and Programming office by 4:00 p.m. on Tuesday, February 25, 2014.

TRD-201400123

Angie Parker

Associate General Counsel

Texas Department of Transportation

Filed: January 14, 2014



Public Notice - Public Hearing, Webb County-City of Laredo Regional Mobility Authority

The Texas Department of Transportation (department) will conduct a public hearing to receive comments on the proposed formation of the Webb County-City of Laredo Regional Mobility Authority (Webb

County-Laredo RMA) by Webb County and the City of Laredo (RMA petitioners).

The RMA petitioners filed a revised petition requesting authorization from the Texas Transportation Commission to form the Webb County-Laredo RMA. As proposed, the Webb County-Laredo RMA would encompass the boundaries of Webb County and would be governed by a board of directors consisting of nine members. Four of the nine board members would be appointed by the Webb County Commissioners Court and four board members would be appointed by the Laredo City Council. In addition to the eight board members appointed by the county and city, the presiding officer of the board will be appointed by the Governor. The proposed initial project of the Webb County-Laredo RMA is an approximately 10.8 mile project to upgrade Loop 20 to Interstate standards from US 59 to the World Trade International Bridge IV. This project will upgrade Loop 20 from the existing US 59 overpass to World Trade International Bridge IV to an urban expressway with continuous frontage roads that contain mainline overpasses at the major street and highway intersections (i.e., Airport Drive, Jacaman Road, University Boulevard, Del Mar Boulevard, Shiloh Road, International Boulevard and the mainlanes over the IH 35 mainlanes as well as two direct connectors to IH 35). Additional right-of-way for the project will be required from approximately International Boulevard to south of Airport Drive.

This major upgrade of Loop 20 is anticipated to proceed in phases and will involve changing the official highway designation of this portion of Loop 20 to US 59. As a result of this change, US 59 from Loop 20 to IH 35 in central Laredo would, subject to the approval of the Texas Transportation Commission, be designated as Business US 59. It is the intent of Webb County, the City of Laredo and TxDOT that this portion of Loop 20/US 59 would become a part of the western leg of IH 69 when this roadway is upgraded to Interstate roadway standards. The department intends to submit an application to designate this portion of Loop 20/US 59 as IH 69 after the upgrade is completed.

Pursuant to 43 TAC §26.12, the department will hold a public hearing on the date, time, and location indicated below to receive public comments and assess the level of public support concerning the proposed Webb County-Laredo RMA:

Tuesday, February 4, 2014, 6:00 p.m.

Texas Department of Transportation - Laredo District Headquarters Office

Large Meeting Room

1817 Bob Bullock Loop

Laredo, Texas 78043

All interested persons are invited to attend this Public Hearing and to provide input. Local officials, their staff members and Laredo District staff will be available before and after the Public Hearing (from 5:00 to 7:00 p.m.) to informally discuss the Webb County-Laredo RMA formation as well as the initial project for the upgrade of Loop 20/US 59 to Interstate highway standards.

Those desiring to make official comments may register starting at 5:00 p.m.. Oral and written comments may be presented at the public hearing, or written comments may be submitted by mail or electronic mail. To be included in the official record of the public hearing, written comments must be received by 5:00 p.m. on February 13, 2014. Written comments should be mailed to Melisa D. Montemayor, Laredo District Administrator, Texas Department of Transportation, 1817 Bob Bullock Loop, Laredo, Texas 78043. Comments submitted via electronic mail should be sent to Melisa.Montemayor@txdot.gov.

Persons who need special communications or other special needs should contact: Raul Leal, the Texas Department of Transportation - Laredo District Public Information Officer, at (956) 712-7416 or e-mail: Raul.Leal@txdot.gov at least two days before the hearing so that appropriate arrangements can be made. Spanish speaking staff will be present at this hearing. This Public Hearing will be documented in a verbatim record.

Copies of the Webb County-Laredo RMA petition that contains more detailed information will be available at the office of the Webb County Judge Danny Valdez (Webb County Courthouse, 1000 Houston Street - Third Floor, Laredo, Texas), the office of the City of Laredo Mayor Raul Salinas (1110 Houston Street, Laredo, Texas), and the Texas Department of Transportation - Laredo District Headquarters Office (1817 Bob Bullock Loop, Laredo, Texas). Copies of the petition may also be requested by contacting Raul Leal, the Texas Department of Transportation - Laredo District Public Information Officer, at (956) 712-7416 or Raul.Leal@txdot.gov.

The department will also publish notices of the public hearing concerning the formation of the Webb County-Laredo RMA in the *Laredo Morning Times* newspaper.

TRD-201400124

Joanne Wright

Deputy General Counsel

Texas Department of Transportation

Filed: January 14, 2014

The Texas A&M University System

Notice of Sale of Oil and Gas Lease

The Board of Regents of The Texas A&M University System, pursuant to provisions of V.T.C.A., Education Code, Chapter 85, as amended, and subject to all policies and regulations promulgated by the Board of Regents, offers for sale at public auction in Room 743, The Texas A&M University System, Moore-Connally Building, 301 Tarrow, College Station, Texas, at 10:00 a.m., Wednesday, February 19, 2014, an oil and gas lease on the following described land in Loving County, Texas.

The property offered for lease contains 360 net mineral acres, more or less, and is more particularly described as follows:

Section 20, Block 54, Township 1, T&P RR Co. Survey, Loving County - 3/8th mineral interest; Section 24, Block 54, Township 1, T&P RR Co. Survey, Loving County - 3/16th mineral interest.

The minimum lease terms, which apply to this tract, are as follows:

- (1) Bonus: Market rate, but in no event will it be less than \$1,400 per net mineral acre
- (2) Royalty: 25%
- (3) Primary term: Three (3) years
- (4) Delay Rental: \$25 per acre
- (5) Net Mineral Acres: 360 (more or less)

The lease will be without warranty of any kind.

Each bidder will be required to conduct its own due diligence to confirm title to, and availability of, the mineral interests being leased.

Prior to bidding at the auction, your company will be required to register and sign a Certification Statement agreeing to be bound by the terms thereof.

The successful bidder shall pay 25% of the bonus amount by 5:00 p.m. the day of the auction.

The balance shall be paid within 24 hours after notification that the bid was accepted.

All payments shall be by certified check, cashier's check or wire transfer.

Failure to pay the balance of the amount bid will result in forfeiture of the 25% paid.

The Texas A&M University System RESERVES THE RIGHT TO REJECT ANY AND ALL BIDS.

Should The Texas A&M University System reject all bids, the bid bonus will be returned to you if you are the successful bidder; however, administration/advertisement fees are not refundable.

Further inquiries concerning oil and gas leases on A&M System land should be directed to: Melody Meyer, System Real Estate, The Texas A&M University System, 301 Tarrow, 6th Floor, College Station, Texas 77840-7896; (979) 458-6350.

TRD-201400101

Don Barwick

HUB and Procurement Manager

The Texas A&M University System

Filed: January 13, 2014

Workforce Solutions Brazos Valley Board

Notice of Release of Request for Proposals for Workforce Investment Act Youth In-School Machinist Training Services

On January 15, 2014, Workforce Solutions Brazos Valley Board (WSBVB) and its fiscal/administrative agent Brazos Valley Council of Government (BVCOG) released a Request for Proposal (RFP) for Workforce Investment Act (WIA) in-school youth machinist training services. The board is seeking a single contractor to provide machinist occupational training to 7 WIA eligible high school seniors, enrolled in a Brazos Valley public independent school district. WSBVB provides publicly funded employment and training services within Brazos, Washington, Robertson, Burleson, Madison, Leon and Grimes counties. WSBVB will accept proposals from public and private organizations or individuals to provide these training services.

Potential respondents may view and print the RFQ at www.bvjobs.org. Difficulties downloading the RFP document should be referred to Vonda Morrison at (979) 595-2800 or vmorrison@bvcog.org. The contact person for this RFQ is Vonda Morrison. A non-mandatory bidders conference call will be conducted Friday, January 24, 2014 from 1:00 p.m. to 2:00 p.m. CST. Potential proposers should call Vonda Morrison no later than 9:00 a.m., CST, on the day of the call to receive the phone number for the call. Potential proposers may submit questions by email to Vonda Morrison up until noon January 23, 2014. All questions and answers will be posted on www.bvjobs.org by January 28, 2014.

Proposals in response to this RFP are due no later than 4:00 p.m., CST, February 14, 2014. They may be hand-delivered to Workforce Solutions Brazos Valley Board at 3991 East 29th, Bryan, Texas 77802 or, if mailed, proposals should be addressed to WSBVB, P.O. Box 4128, Bryan, Texas 77805. Proposals arriving after the due date and time will not be accepted regardless of postmarked date.

This is an equal opportunity employer/program. Auxiliary aids and services are available upon request to individuals with disabilities. Re-



January 28, 2014

RE: PUBLIC HEARING
WEBB COUNTY-CITY OF LAREDO REGIONAL MOBILITY AUTHORITY (RMA)

Dear Sir/Madam:

Webb County and the City of Laredo, along with the Texas Department of Transportation, cordially invite you to attend a Public Hearing to discuss the proposed Petition for Authorization to Form a Regional Mobility Authority. This proposal is intended to provide additional mechanisms for improving the transportation system in Webb County and the City of Laredo.

The purpose of this public hearing is to discuss the status and particulars of the proposed RMA, to provide information about the projects involved, and to solicit comments from the general public.

The formal Public Hearing presentation will take place Tuesday, February 4, 2014 and start at 6:00 PM. Webb County, City of Laredo, and TxDOT personnel will be available to answer questions on a one-on-one basis before and after the presentation. Spanish speaking staff will also be present. The public hearing is to take place at the following venue:

**TxDOT-Laredo District Headquarters
1817 Bob Bullock Loop
Large Meeting Room
From 5:00 PM to 7:00 PM**

The TxDOT Meeting Room is located around the rear of the Headquarters Building. Signs will be placed outside the building for your convenience.

The general public is invited to attend and comments and suggestions are encouraged. We welcome your participation and interest in this initiative. You may contact me at (956) 712-7456 or email me at melisa.montemayor@txdot.gov; Mike Graham will also be available and he can be reached at (956) 712-7742 or email him at mike.graham@txdot.gov should you have any questions or need additional details.

Sincerely,

Melisa D. Montemayor
District Administrator

MDM:mec

RMA Public Hearing - Invitation List

City / County Officials

1. Danny Valdez, Judge
2. Leroy Medford, Chief Admin. Officer
3. Raul G. Salinas, Mayor
4. Mike Montemayor, Commissioner
5. Rosaura “Wawi” Tijerina, Commissioner
6. John Galo, Commissioner, Commissioner
7. Jaime Canales, Commissioner
8. Mike Garza, Councilmember
9. Esteban Rangel, Councilmember
10. Alejandro Perez, Councilmember
11. Juan Narvaez, Councilmember
12. Roque Vela, Jr., Councilmember
13. Charlie San Miguel, Councilmember
14. Jorge Vera, Councilmember
15. Cindy Liendo Espinoza, Councilmember
16. Nathan Bratton, Planning Director
17. Carlos R. Villarreal, City Manager
18. Cynthia Collazo, Deputy City Manager
19. Horacio De Leon, Asst. City Manager
20. Jesus Olivares, Asst. City Manager
21. Richard Raymond, State Representative
22. Henry Cuellar, U.S. Representative
23. Tracy O. King, U.S. Representative
24. Judith Zaffirini, State Senator
25. Mr. J. Jorge Verduzco, Exec. VP, IBC Bank
26. Dr. Ray M. Keck, III, TAMIU President
27. Dr. A. Marcus Nelson, Superintendent
28. Roberto J. Santos, Superintendent

Land Owners

29. San Isidro Southeast Loop, Ltd.
30. Killam Development Ltd.
31. Killam Ranch Properties Ltd.
32. Khaledi Commercial Investments Lp.
33. Newman A TS LP
34. Mike’s Bikes L C
35. National Retail Properties
36. Webb Commercial Development Inc.

RMA Public Hearing - Invitation List

37. IBC Bank, Industry Consultant Group Inc.
38. Alexander Residential Dev. Co. LLP
39. Texas A&M University System, Office of General Council
40. Arms Ltd.
41. Laredo HIX II Lp.
42. Patricia Jacaman
43. Service Stop Lp.
44. Stripes LLC
45. K Partners Laredo Lp.
46. Laredo Automotive Properties Ltd.
47. Jacaman Development Inc.
48. Greenway Thunderbird LLC
49. Thunderbird Real Estate III Ltd.
50. Texas Community Bank
51. Zuco Minerals & Development Ltd.
52. Laredo Town Center LLC
53. Juanita Peña
54. Anna Haynes
55. Juan Moreno and Maria Del Carmen
56. Guerra Encarnacion
57. Lilia L. Andrade
58. Mr. & Mrs. Manuel Quintanilla, Jr.
59. Maria & Jesus A. Virlar
60. Mauro G. Gutierrez
61. Jesus Rogelio Sifuentes
62. Eliseo Navarrete
63. Diana Garza
64. Guadalupe & Emiliano Ibarra
65. Mr. & Mrs. Roberto Maldonado
66. Patricia Martinez
67. Roberto Sanchez
68. Eduardo Jose Sanchez
69. Enrique Maldonado
70. Empire Land Company Inc.
71. Correction Corporation
72. Erika & Sergio De La Parra
73. Mark Lawrence Deutsch
74. U.S. General Services Administration
75. Veronica & Clay J. Nicky
76. Jose Luis Contreras

SECTION 4

Public Hearing Hand-Outs and Attendance Sign-in Sheets



February 4, 2014

Dear Sir or Madam:

I want to thank you for attending tonight's Public Hearing concerning the formation of the Webb County – City of Laredo Regional Mobility Authority (RMA) that is a cooperative effort between Webb County, the City of Laredo and TxDOT.

The purpose of tonight's hearing is to discuss the status of the proposed Webb County-Laredo RMA, the RMA's proposed Loop 20/US 59 project information and the RMA's approval schedule by the Texas Transportation Commission. We look forward to informally discussing this project with you on a one-on-one basis before and after the Hearing as well as hearing your comments or questions during the Hearing which will start at 6:00 PM. Due to the formal nature of Public Hearings and to accurately answer your questions or comments, we will take your comments at the Hearing and respond to you by letter shortly after the comment period ends.

We will also be accepting written comments for the proposed Webb County-Laredo RMA in an additional effort to take your input into account. For your convenience a comment form is included in this information packet. Written comments not submitted tonight should be mailed to Texas Department of Transportation-Laredo District, attention: Melisa D. Montemayor, 1817 Bob Bullock Loop, Laredo, Texas 78043 / e-mail: Melisa.Montemayor@txdot.gov / phone: (956) 712-7400. We should receive written comments on or before 5:00 PM, February 13, 2013 for your comments to be included in the official Public Hearing record.

Thank you for attending tonight's Public Hearing. Public involvement is a vital part of this process and we sincerely appreciate your participation.

Sincerely,

A handwritten signature in blue ink, appearing to read "Melisa D. Montemayor".

Melisa D. Montemayor
Laredo District Administrator



4 de Febrero del 2014

Estimado Señor o Señora:

Quiero darle las gracias por asistir a la audiencia pública de esta noche concerniente sobre la formación de una Autoridad de Movilidad Regional (Condado de Webb - Laredo RMA) propuesta por el Condado de Webb y la Ciudad de Laredo.

El propósito de la audiencia de esta noche es para discutir el estado actual sobre la formación de una alianza entre el Condado de Webb - Laredo RMA Autoridad de Movilidad Regional (RMA), el proyecto propuesto por la RMA del Loop 20 / US 59, y el calendario de aprobación de la RMA por la Comisión de Transportación de Texas. Esperamos discutir este RMA de manera informal y personal con usted antes y después de la audiencia, así como escuchar sus comentarios o preguntas durante la audiencia que empezará a las 6:00 PM. Debido a la naturaleza formal de audiencias públicas y para poder responder a sus preguntas o comentarios con precisión, tomaremos sus comentarios en la audiencia y le responderemos por carta poco después que termine el plazo de 13 del Febrero, 2014.

También estaremos aceptando comentarios por escrito para este proyecto como un esfuerzo adicional de tomar en cuenta sus comentarios en el diseño y ejecución final del proyecto. Para su comodidad, un formulario de comentarios está incluido en este paquete de información. Los comentarios por escrito que no se presenten esta noche deben ser enviados por correo al Texas Department of Transportation-Laredo District, attention: Melisa Montemayor, 1817 Bob Bullock Loop, Laredo, Texas 78043 / e-mail: Melisa.Montemayor@txdot.gov / teléfono: (956) 712-7400. Debemos recibir comentarios por escrito dentro en/o antes de las 5:00 PM, 4 de Febrero del 2014) para que sus comentarios sean incluidos en el registro oficial de la audiencia pública.

Gracias por asistir a la audiencia pública de esta noche. La participación del público es una parte importante de estos proyectos y sinceramente agradecemos su participación.

Atentamente,

A handwritten signature in blue ink, appearing to read "Melisa D. Montemayor".

Melisa D. Montemayor
Administradora del Distrito de Laredo

Public Hearing Agenda
Webb County – City of Laredo Regional Mobility Authority (RMA)
TxDOT-Laredo District Headquarters, Laredo, Texas
February 4, 2014

5:00 PM – 6:00 PM

- Viewing of Displays and Informal Discussions with the Project Staff

6:00 PM – Start of Public Hearing

Presiding Officer: Melisa D. Montemayor – TxDOT Laredo District Administrator

- Welcome, Purpose of the Public Hearing and Introductions
- Webb Co.-Laredo RMA Information
- Approval Schedule
- Recess (10-Minutes)
- Public Comments
- Adjournment

**Agenda de Audiencia Pública
Sobre la Formación de Una
Condado de Webb y la Ciudad de Laredo Autoridad de Movilidad Regional
TxDOT-Laredo District Headquarters
4 de febrero del 2014**

5:00 PM – 6:00 PM

- Examinación de las exposiciones y conversaciones informales con personal del proyecto.

6:00 PM – Inicio de la Audiencia Pública

Funcionaria Presentadora: Melisa D. Montemayor – TxDOT Laredo District Administrator

- Bienvenida, propósito de la audiencia pública y Presentaciones
- Información del la Autoridad de Movilidad Regional (RMA) del Condado de Webb – Ciudad de Laredo.
- Calendario del proyecto
- Receso (10 minutos)
- Comentarios Públicos
- Clausura

Please Print (Por favor escriba en letra molde)

I desire to make a verbal statement at this Public Hearing.

(Deseo hacer un comentario oral durante esta Audiencia Pública.)

(Name/Nombre)

(Address/Dirección)

(City/Ciudad)

(State/Estado)

(Zip/ Código Postal)

Note: Time may be limited to 3 minutes and only one speaker per group.

(El Tiempo será limitado a 3 minutos por persona y solamente un representante por grupo.)

February 4, 2014 Public Hearing: Webb Co.-Laredo Regional Mobility Authority

Audiencia Pública, 4 de febrero del 2014: Condado de Webb-Laredo Autoridad de Movilidad Regional

Please Check One: () Citizen/residente () Public Official/Funcionario Público

Por favor escoja uno:

Per Texas Transportation Code, §201.811(a)(5)): check each of the following boxes that would apply to you:

(Según el Código de Transporte de Texas, § 201.811(a)(5)): marque los que apliquen a usted:)

☐ I am employed by TxDOT (Soy empleado de TxDOT)

☐ I do business with TxDOT (Hago negocios con TxDOT)

☐ I could benefit monetarily from the project or other item about which I am commenting

(Podría beneficiar monetariamente del proyecto u otro elemento sobre el que estoy comentando)

Public Hearing Rules:

- *The Hearing Will Follow The Agenda.*
- *Verbal and Written Comments Will Be Accepted As Explained At The Start Of The Comment Period.*
- *This Public Hearing Concerns The Formation Of The Webb County/Laredo RMA.*
- *Public Input on the Proposed RMA Loop 20/US 59/Future IH 69 Construction Project Will Be Specifically Addressed As That Project Moves Into The Preliminary Design Phase.*

Reglas Audiencia Pública:

- *La audiencia seguirá el orden del día.*
- *Se aceptarán comentarios verbales y escritos como se explica en el comienzo del período de comentario.*
- *Esta audiencia pública refiere a la formación del Condado de Webb/Laredo RMA.*
- *Los comentarios del público sobre la formación del RMA y proyectos a futuro de construcción, Loop 20/US 59/IH 69 serán específicamente abordados a medida que el proyecto se mueva en la fase preliminar de diseño.*



Public Hearing Comments

Webb County, the City of Laredo and TxDOT would like to have your comments and questions on the upcoming Webb County - City of Laredo Regional Mobility Authority. You may leave this form with the Hearing staff at tonight's event or you may fold this form and mail it to the address on the reverse side; fax it to (956) 712-7401; or scan and e-mail it to Melisa.Montemayor@TxDOT.gov. **Comments must be received by 5:00 PM, February 13, 2014 to be included in the official Public Hearing Summary.**

1) What are your questions or concerns about the Webb County-City of Laredo Regional Mobility Authority (RMA) as it proceeds?

2) Additional Comments:

Comments By: Name: _____
Address: _____
Phone/e-mail: _____

(Per Texas Transportation Code, §201.811(a)(5)): check each of the following boxes that apply to you:

- ☐ I am employed by TxDOT
- ☐ I do business with TxDOT
- ☐ I could benefit monetarily from the project or other item about which I am commenting

Comments must be received on or before 5:00 PM, February 13, 2014.

Leave this form with the project staff; mail to the address on the reverse side of this form; fax to (956) 712-7401; or e-mail to Melisa.Montemayor@TxDOT.gov.

*Place
Stamp
Here*

Texas Department of Transportation – Laredo District
Melisa D. Montemayor
1817 Bob Bullock Loop
Laredo TX 78043



Comentarios para Audiencia Pública

El Departamento De Transporte de Texas ("TxDOT") llevará a cabo una audiencia pública para recibir comentarios sobre la formación de una Condado de Webb - Laredo Autoridad de Movilidad Regional (RMA) propuesta por el Condado de Webb y la ciudad de Laredo ("Petitionarios del RMA"). Puede dejar este formulario con el personal en la Audiencia Pública de esta noche o puede doblar este formulario y enviarlo por correo a la dirección que aparece en el reverso, por fax al (956) 712-7401, o escanéelo y envíelo por correo electrónico a Melisa.Montemayor@TxDOT.gov. Los comentarios deben ser recibidos para las 5:00 PM, el 13 de febrero del 2014 para ser incluidos en el sumario de la audiencia pública.

- 1) ¿Cuáles son sus preguntas o inquietudes a medida que avanza la formación de la alianza Webb County – Ciudad de Laredo en la creación de la Autoridad de Movilidad Regional (RMA)?

- 2) Comentarios adicionales:

Comentarios por: Nombre: _____
Dirección: _____
Teléfono/e-mail: _____

Según el Código de Transporte de Texas, § 201.811(a)(5)): marque los que apliquen a usted:

- ☐ Soy empleado de TxDOT
- ☐ Hago negocios con TxDOT
- ☐ Podría beneficiar monetariamente del proyecto u otro elemento sobre el que estoy comentando

Comentarios deben recibirse para/antes de las 5:00PM, el 4 de febrero del 2014.

Deje este formulario con el personal del proyecto, envíelo a la dirección que aparece en el reverso de este formulario; o envíelo por E-mail a: Melisa.Montemayor@TxDOT.gov.

*Lugar
sello
aquí*

Texas Department of Transportation – Laredo District
Melisa D. Montemayor
1817 Bob Bullock Loop
Laredo TX 78043

Table 1: Webb Co.-Laredo RMA Public Hearing Attendees.

Name and Affiliation:	Contact Information:
Webb Co. Judge Danny Valdez	1000 Houston St., Laredo, Texas 78040 (956) 523-4600
Leroy Medford (Webb Co. Administrator)	1000 Houston St., Laredo, Texas 78040 (956) 523-4600
Luis Perez Garcia – Webb Co. Engineer	1000 Houston St., Laredo, Texas 78040
Carlos Villarreal – Laredo City Manager	1110 Houston St., Laredo, Texas 78040
Nathan Bratton – City of Laredo Planning Director	1120 San Bernardo, Laredo, Texas 78040 nbratton@ci.laredo.tx.us
Jorge Verduzco – IBC Bank / I-69 Alliance	1200 San Bernardo Ave., Laredo, Texas 78042
Mario A. Pena – Killam Development Corp.	4320 University Blvd., Laredo, Texas 78041
Leo Rodriguez	P.O. Box 3070, Laredo, Texas 78044
Gerry Schwebel – IBC Bank	P.O. Drawer 7359, Laredo, Texas 78042
Luis A. Ramirez (representing Manuel Quintanilla)	308 Lake Louise, Laredo, Texas 78041
Miguel A. Conchas-Laredo Chamber of Commerce	2310 San Bernardo, Laredo, Texas 78041
Claudia Gonzalez-Liendo	101 Lake Superior, Laredo, Texas 78041
Arturo Smith, Jr.	4313 Centennial Court, Laredo, Texas 78046
Harry Hardwick	(361) 816-9640
Nativido Lozano II	nlozano@ibc.com / (956) 722-7611
Pat Murphy	pmurphy@sanisidortx.com / (956) 796-1101
Olivia Varela – Laredo Development Foundation	616 Leal, Laredo, Texas 78041 / 722-0653 / ovarela@ldfonline.org
Joseph Mendiola – Laredo Development Foundation	616 Leal, Laredo, Texas 78041 / 722-0653 jmendiola@ldfonline.org
Fernando Santos – IBC Bank	722-7611
Rolando Ortiz – Killam Development	4320 University, Laredo, Texas 78041 Rolando@Killamcompanies.com
Danny Zaragoza – Killam Development	111 Esperanza Drive

Name and Affiliation:	Contact Information:
<u>TxDOT Staff:</u>	
Eduardo DeLeon – TxDOT Laredo District	
Albert Ramirez – TxDOT Laredo District	
Danny Magee – TxDOT Laredo District	
Carlos G. Rodriguez – TxDOT Laredo District	
David Salazar – TxDOT Laredo District	
Mike Graham – TxDOT Laredo District	
Melisa M. Montemayor – TxDOT Laredo District	
Chris Kloss – TxDOT Laredo District	
Marissa Montoya – TxDOT Laredo District	
Roberto Rodriguez – TxDOT Laredo District	
Humberto Gonzalez, Jr. – TxDOT Laredo District	
Jesus Saavedra – TxDOT Laredo District	
Sara Garza – TxDOT	
David Plutowski – TxDOT TP&P	

[illegible]

[illegible]



Public Hearing Sign-In Sheet General Public

Webb County-City of Laredo Regional Mobility Authority
February 4, 2014 Held at the TxDOT-Laredo District Headquarters,
1817 Bob Bullock Loop, Laredo, Texas

<u>Print Name & Title & Affiliation</u>	<u>Contact Information</u> Address, City, State, Zip Code / Telephone / E-mail
JORGE VERDUZCO	IBC BANK
MARIO A. PEÑA	IBC BANK
D. TUENNA	KILLAM Dev.
CEO RODRIGUEZ	P.O. BOX 3076 LAREDO, TX 78044
GERM SCHWESER	IBC BANK P
Luis A. Ramirez	MANUEL GUTIERREZ 302 LAKE LOUISE (LAKESIDE) LAREDO, TEXAS
MIGUEL A. CONCHAS	LAREDO CHAMBER OF COMMERCE 2310 SAN BERNARDO AVE 78041
CLAUDIA GONZALEZ-LIENDO	101 LAKE SUPERIOR LAREDO, TX 78041
Arturo Smith JR.	4313 CENTENNIAL CT. LAREDO, TX 78046

[illegible]



Public Hearing Sign-In Sheet General Public

Webb County-City of Laredo Regional Mobility Authority
February 4, 2014 Held at the TxDOT-Laredo District Headquarters,
1817 Bob Bullock Loop, Laredo, Texas

<u>Print Name & Title & Affiliation</u>	<u>Contact Information</u> Address, City, State, Zip Code / Telephone / E-mail
Nativido Lozano Jr	(956) 722-7611 nlozano@ibc.com
Pat Murphy	(956) 796-1101 pmurphy@laredotx.gov
Olivia Varela	Laredo Development Foundation 616 Leal St. 78041 722-0563 ovarela@ldfonline.org
Joseph Mendez	" "

[illegible]

[illegible]



Public Hearing Sign-In Sheet TxDOT Staff

Webb County-City of Laredo Regional Mobility Authority
February 4, 2014 Held at the TxDOT-Laredo District Headquarters,
1817 Bob Bullock Loop, Laredo, Texas

<u>Print Name & Title & Affiliation</u>	<u>Contact Information</u> <u>Address, City, State, Zip Code / Telephone / E-mail</u>
Eduardo DeLeon TXDOT	1817 Bob Bullock LP, Laredo, TX 78043 (954) 712-7400 eduardo.deleon@txdot.gov
Albert Ramirez	" alberto.ramirez@txdot.gov
Danny Magee	" TXDOT.
Carlos G Rodriguez - AE	1817 Bob Bullock LP Laredo TX 78043
DAVID SANCHEZ	"



Public Hearing Sign-In Sheet TxDOT Staff

Webb County-City of Laredo Regional Mobility Authority
February 4, 2014 Held at the TxDOT-Laredo District Headquarters,
1817 Bob Bullock Loop, Laredo, Texas

<u>Print Name & Title & Affiliation</u>	<u>Contact Information</u> <i>Address, City, State, Zip Code / Telephone / E-mail</i>
Mike Graham	Laredo District
Melisa Montemayor	
David Plutowski	
Chris Kloss	
Marissa Montoya	
Roberto Reduiz	TxDOT-LRD
Humberto Gonzalez Jr,	TxDOT- LRD
Sara R Garza MPO	TxDOT-LRD
Jesus Saavedra	TxDOT LAO

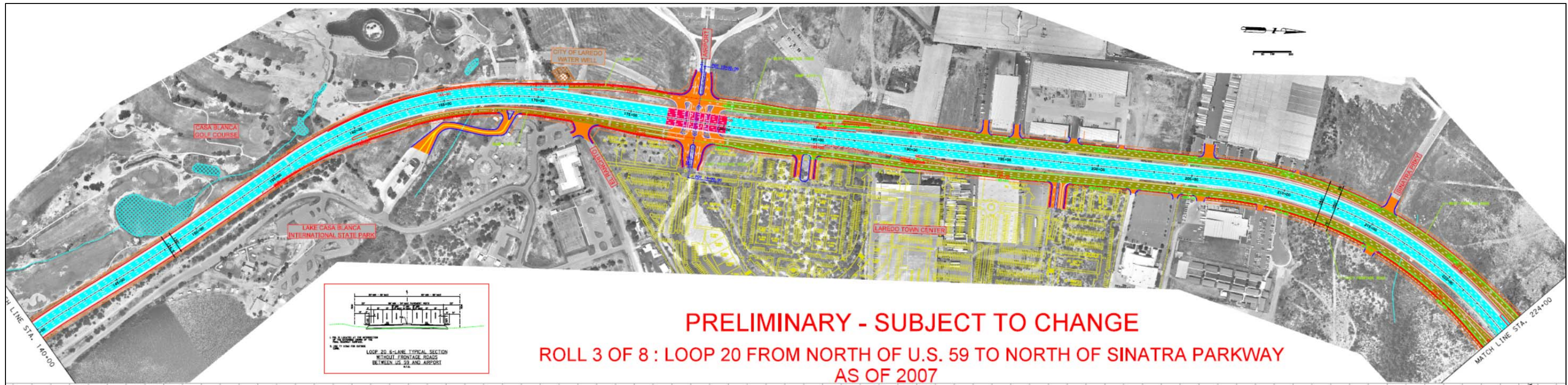
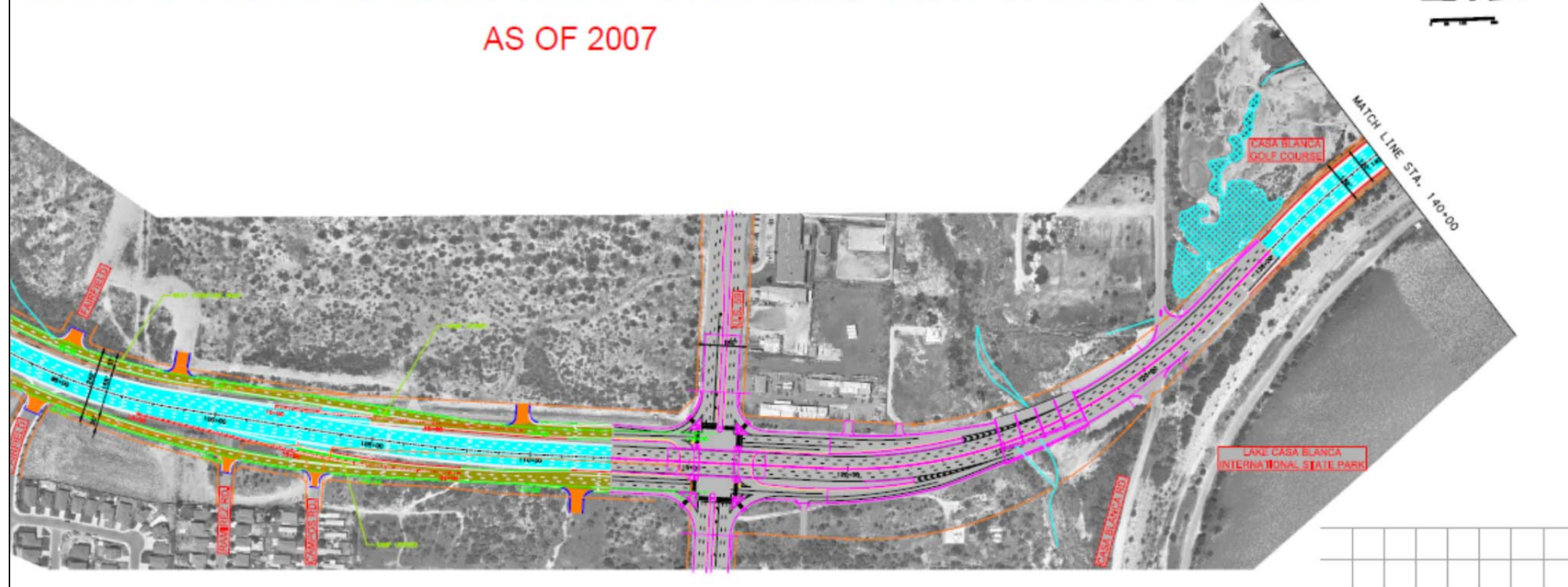
SECTION 5

Public Hearing Exhibits, Layouts, Presentation and Hearing Transcript

PRELIMINARY - SUBJECT TO CHANGE

ROLL 2 OF 8 : LOOP 20 FROM NORTH OF TEX-MEX R.R. BRIDGE TO NORTH OF U.S. 59

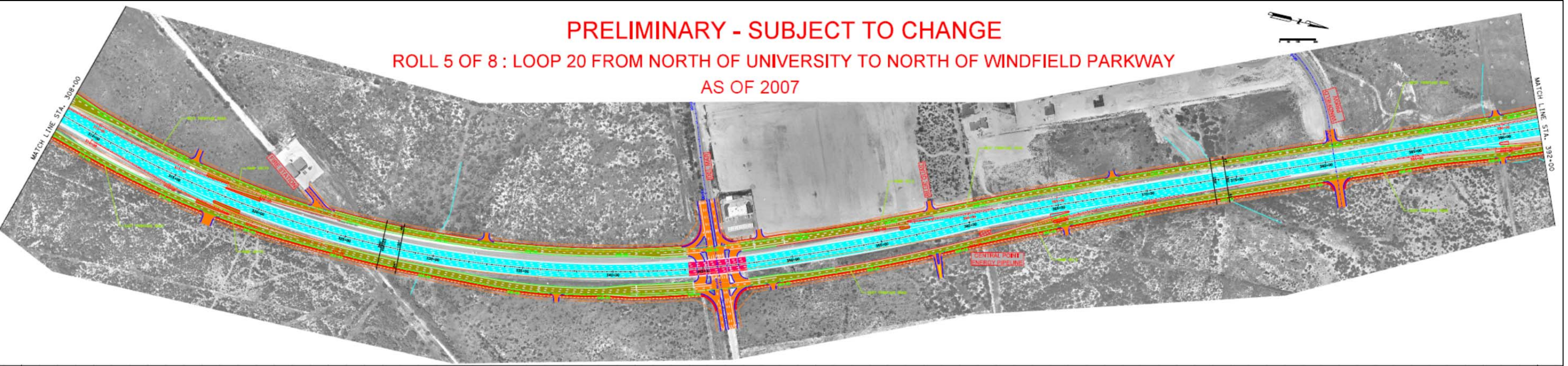
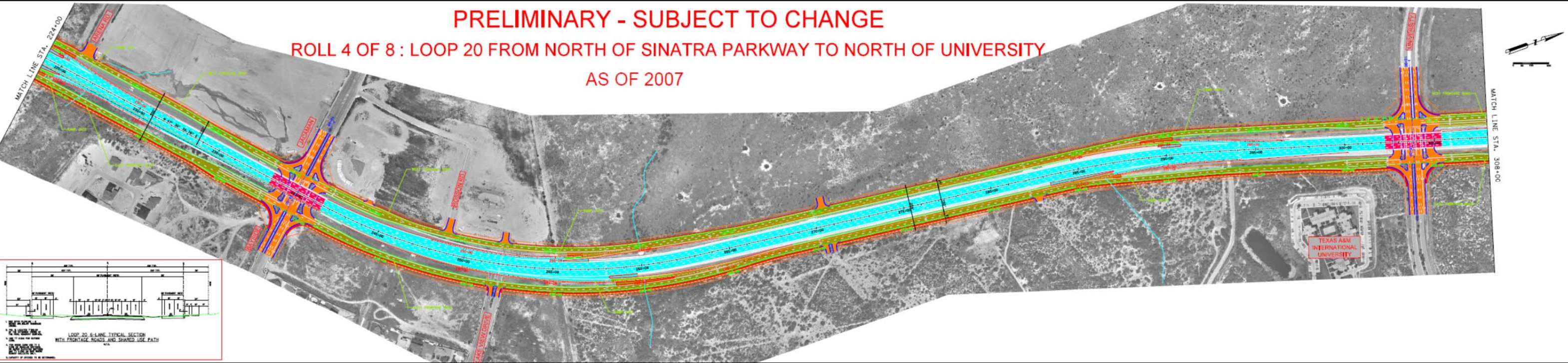
AS OF 2007

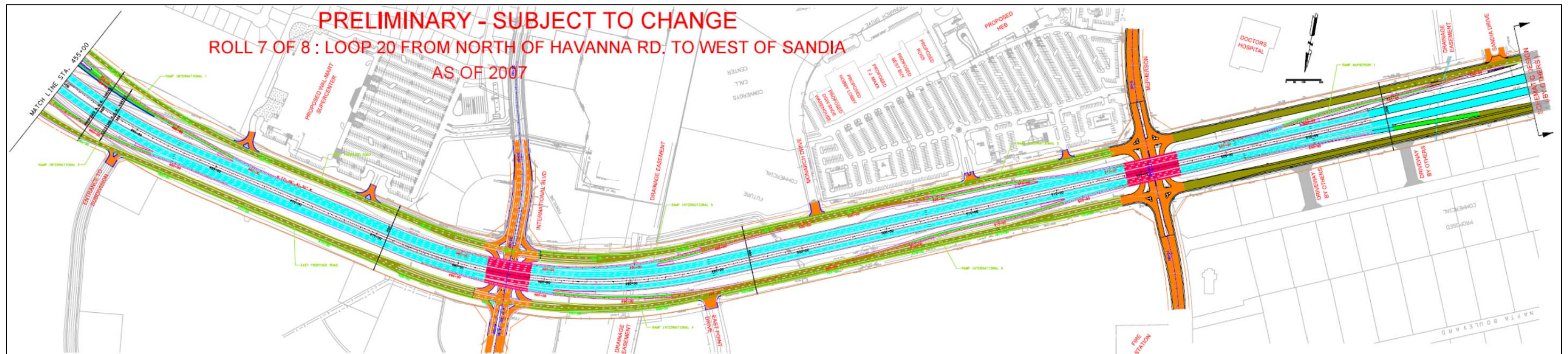
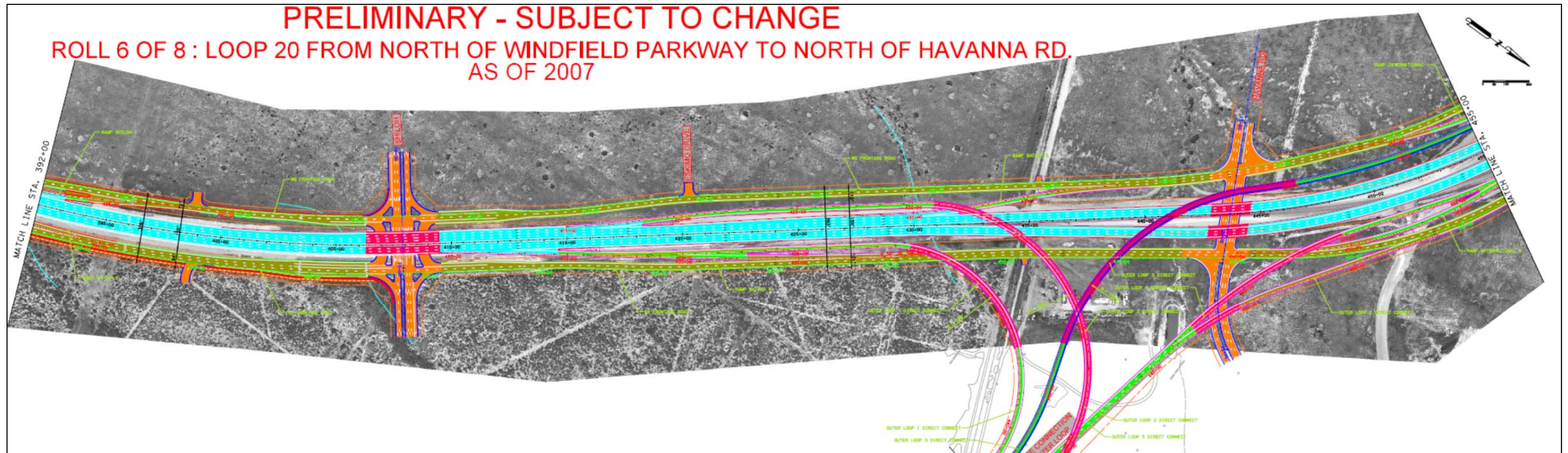


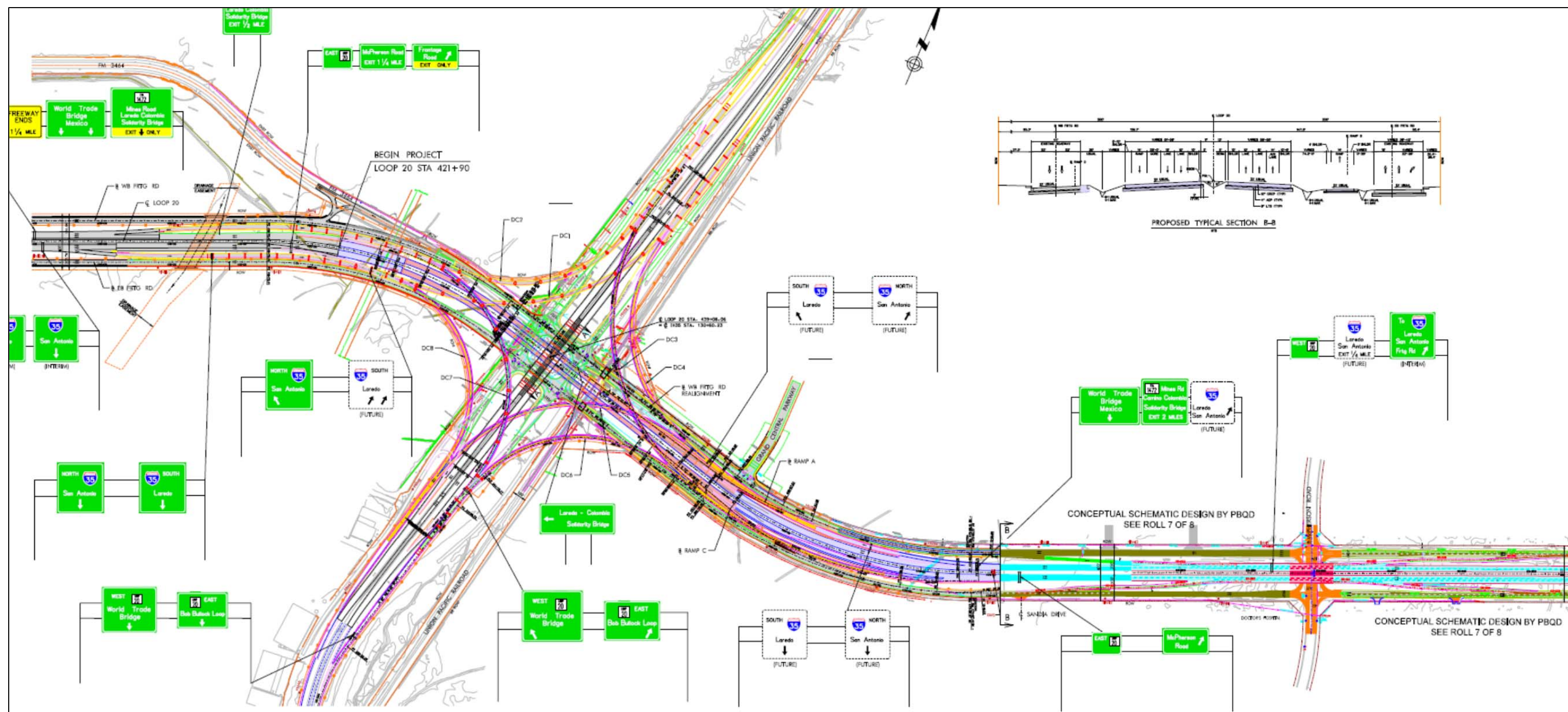
PRELIMINARY - SUBJECT TO CHANGE

ROLL 3 OF 8 : LOOP 20 FROM NORTH OF U.S. 59 TO NORTH OF SINATRA PARKWAY

AS OF 2007








 TEXAS DEPARTMENT OF TRANSPORTATION



WEBB COUNTY-CITY OF LAREDO REGIONAL MOBILITY AUTHORITY PUBLIC HEARING

Melisa D. Montemayor
Laredo District Administrator


Commencement of the Hearing:



Webb County-City of Laredo Regional Mobility Authority (RMA)

February 4, 2014 Public Hearing


Held At: TxDOT-Laredo District, 1817 Bob Bullock Loop, Laredo



Melisa D. Montemayor – TxDOT – Laredo District Administrator:

Agenda of the Webb County-Laredo RMA Public Hearing:


- Welcome & Introductions
- Hearing Rules
- General RMA Information
- Webb County-Laredo RMA Goals, History and Organization
- RMA Formation and Approval Schedule
- Proposed RMA Projects
- Funding Mechanisms
- Environmental Process
- Summary of the Benefits of the Webb County-Laredo RMA
- 10-Minute Recess
- Public Comments
- Adjournment



Melisa D. Montemayor – TxDOT – Laredo District Administrator:

Welcome To The Webb County-Laredo RMA Public Hearing:


- Welcome & Introductions



Melisa D. Montemayor – TxDOT – Laredo District Administrator:

Rules of the Webb County-Laredo RMA Public Hearing:

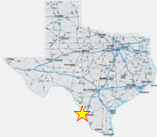
- The Hearing Will Follow The Agenda.



Melisa D. Montemayor – TxDOT – Laredo District Administrator:

Rules of the Webb County-Laredo RMA Public Hearing:

- The Hearing Will Follow The Agenda.
- Verbal and Written Comments Will Be Accepted As Explained At The Start Of The Comment Period.



Melisa D. Montemayor – TxDOT – Laredo District Administrator:

Rules of the Webb County-Laredo RMA Public Hearing:

- The Hearing Will Follow The Agenda.
- Verbal and Written Comments Will Be Accepted As Explained At The Start Of The Comment Period.
- **This Public Hearing Concerns The Formation Of The Webb County/Laredo RMA.**



Melisa D. Montemayor – TxDOT – Laredo District Administrator:

Rules of the Webb County-Laredo RMA Public Hearing:

- The Hearing Will Follow The Agenda.
- Verbal and Written Comments Will Be Accepted As Explained At The Start Of The Comment Period.
- This Public Hearing Concerns The Formation Of The Webb County/Laredo RMA.
- **Public Input on the Proposed RMA Loop 20/ US 59/Future IH 69 Construction Project Will Be Specifically Addressed As That Project Moves Into The Preliminary Design Phase.**



Melisa D. Montemayor – TxDOT – Laredo District Administrator:

The Need For Improved Mobility in Laredo & Webb County:

Melisa D. Montemayor – TxDOT – Laredo District Administrator:

The Need For Improved Mobility in Laredo & Webb County:

- **Effective and Efficient Transportation is Important in Our Community, Our Region, in Texas and in the United States.**

Melisa D. Montemayor – TxDOT – Laredo District Administrator:

The Need For Improved Mobility in Laredo & Webb County:

- Effective and Efficient Transportation is Important in Our Community, Our Region, in Texas and in the United States.
- **Rapidly Increasing Population in Laredo and Webb County:**

Melisa D. Montemayor – TxDOT – Laredo District Administrator:

The Need For Improved Mobility in Laredo & Webb County:

- Effective and Efficient Transportation is Important in Our Community, Our Region, in Texas and in the United States.
- **Rapidly Increasing Population in Laredo and Webb County:**
 - 250,304 persons in Webb Co. in 2010 Census.

Melisa D. Montemayor – TxDOT – Laredo District Administrator:

The Need For Improved Mobility in Laredo & Webb County:

- Effective and Efficient Transportation is Important in Our Community, Our Region, in Texas and in the United States.
- **Rapidly Increasing Population in Laredo and Webb County:**
 - 250,304 persons in Webb Co. in 2010 Census.
 - Increasing to 437,726 by 2030.

Melisa D. Montemayor – TxDOT – Laredo District Administrator:

The Need For Improved Mobility in Laredo & Webb County:

- Effective and Efficient Transportation is Important in Our Community, Our Region, in Texas and in the United States.
- **Rapidly Increasing Population in Laredo and Webb County:**
 - 250,304 persons in Webb Co. in 2010 Census.
 - Increasing to 437,726 by 2030.
- **International Trade Levels Will Continue To Grow, Bringing More Trucks Into Laredo.**

Melisa D. Montemayor – TxDOT – Laredo District Administrator:

The Need For Improved Mobility in Laredo & Webb County:

- Effective and Efficient Transportation is Important in Our Community, Our Region, in Texas and in the United States.
- **Rapidly Increasing Population in Laredo and Webb County:**
 - 250,304 persons in Webb Co. in 2010 Census.
 - Increasing to 437,726 by 2030.
- **International Trade Levels Will Continue To Grow, Bringing More Trucks Into Laredo.**
 - 3.5 million International Truck Crossings In 2013

Melisa D. Montemayor – TxDOT – Laredo District Administrator:

The Need For Improved Mobility in Laredo & Webb County:

- Effective and Efficient Transportation is Important in Our Community, Our Region, in Texas and in the United States.
- **Rapidly Increasing Population in Laredo and Webb County:**
 - 250,304 persons in Webb Co. in 2010 Census.
 - Increasing to 437,726 by 2030.
- **International Trade Levels Will Continue To Grow, Bringing More Trucks Into Laredo.**
 - 3.5 million International Truck Crossings In 2013
- **Traffic Levels Will Increase With The Increasing Population and Trade.**

Melisa D. Montemayor – TxDOT – Laredo District Administrator:

The Need For Improved Mobility in Laredo & Webb County:

- Effective and Efficient Transportation is Important in Our Community, Our Region, in Texas and in the United States.
- **Rapidly Increasing Population in Laredo and Webb County:**
 - 250,304 persons in Webb Co. in 2010 Census.
 - Increasing to 437,726 by 2030.
- **International Trade Levels Will Continue To Grow, Bringing More Trucks Into Laredo.**
 - 3.5 million International Truck Crossings In 2013
- **Traffic Levels Will Increase With The Increasing Population and Trade.**
 - The Traffic Efficiency (*Level of Service – LOS*) On Laredo Roads Will Also Continue to Worsen, Especially On Loop 20.

Melisa D. Montemayor – TxDOT – Laredo District Administrator:

The Need For Improved Mobility in Laredo & Webb County:

- Effective and Efficient Transportation is Important in Our Community, Our Region, in Texas and in the United States.
- **Rapidly Increasing Population in Laredo and Webb County:**
 - 250,304 persons in Webb Co. in 2010 Census.
 - Increasing to 437,726 by 2030.
- **International Trade Levels Will Continue To Grow, Bringing More Trucks Into Laredo.**
 - 3.5 million International Truck Crossings In 2013
- **Traffic Levels Will Increase With The Increasing Population and Trade.**
 - The Traffic Efficiency (*Level of Service – LOS*) On Laredo Roads Will Also Continue to Worsen, Especially On Loop 20.
 - LOS On Loop 20 Will Decline To **LOS F** At Most Intersections By ~2030 Without Major Upgrades.

Melisa D. Montemayor – TxDOT – Laredo District Administrator:

Need For Improved Mobility in Laredo & Webb County:

Bottom Line:

Melisa D. Montemayor – TxDOT – Laredo District Administrator:

Need For Improved Mobility in Laredo & Webb County:

Bottom Line:

- With a Shortage of Funding From “Traditional” Gas-Tax Sources, Innovative Funding Solutions Are Essentials.



Melisa D. Montemayor – TxDOT – Laredo District Administrator:

Need For Improved Mobility in Laredo & Webb County:

Bottom Line:

- With a Shortage of Funding From “Traditional” Gas-Tax Sources, Innovative Funding Solutions Are Essentials.
- This Can Be Done Through A Regional Mobility Authority That Has The Ability To Use “Innovative / Alternative” Transportation Funding Sources Not Available To TxDOT.



Melisa D. Montemayor – TxDOT – Laredo District Administrator:

Background on the Overall RMA Process:

A Detailed Background, Legal Basis and Requirements for All RMAs in Texas is Available at the Sign-In Desk.

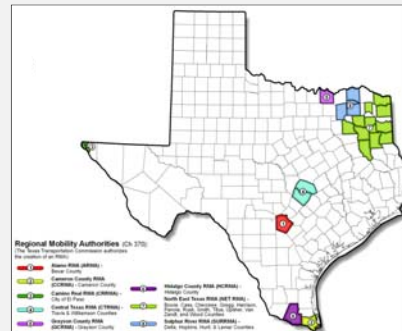
Melisa D. Montemayor – TxDOT – Laredo District Administrator:

Summary of General RMA Facts:

Melisa D. Montemayor – TxDOT – Laredo District Administrator:

Summary of General RMA Facts:

–Currently there are eight RMAs operating in Texas



Melisa D. Montemayor – TxDOT – Laredo District Administrator:

Summary of General RMA Facts:

- Currently there are eight RMAs operating in Texas
- RMAs have a variety of powers and tools to fund and construct projects to aid in solving local transportation issues



Melisa D. Montemayor – TxDOT – Laredo District Administrator:

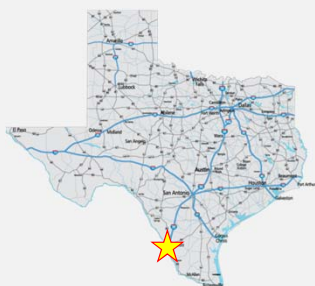
Summary of General RMA Facts:

- Currently there are eight RMAs operating in Texas
- RMAs have a variety of powers and tools to fund and construct projects to aid in solving local transportation issues
- Localized governance that is accountable to the local population



Melisa D. Montemayor – TxDOT – Laredo District Administrator:

Information On The Webb County – City of Laredo RMA



Melisa D. Montemayor – TxDOT – Laredo District Administrator:

Goals and Benefits of the Webb County-Laredo RMA :



Melisa D. Montemayor – TxDOT – Laredo District Administrator:

Goals and Benefits of the Webb County-Laredo RMA :

- ✓ **Improve Mobility In and Around Laredo More Quickly.**



Melisa D. Montemayor – TxDOT – Laredo District Administrator:

Goals and Benefits of the Webb County-Laredo RMA :

- ✓ **Improve Mobility In and Around Laredo More Quickly.**
- ✓ **Help Meet the Transportation Needs of a Rapidly Growing Population.**



Melisa D. Montemayor – TxDOT – Laredo District Administrator:

Goals and Benefits of the Webb County-Laredo RMA :

- ✓ **Improve Mobility In and Around Laredo More Quickly.**
- ✓ **Help Meet the Transportation Needs of a Rapidly Growing Population.**
- ✓ **Help Meet the Transportation Needs of the Growing International Trade & Trucking Businesses.**



Melisa D. Montemayor – TxDOT – Laredo District Administrator:

History of the Webb County-Laredo RMA :

Melisa D. Montemayor – TxDOT – Laredo District Administrator:

History of the Webb County-Laredo RMA (and Loop 20 work):

- **2005-13** – The Laredo District Conducts Studies on Improving Loop 20 To An Urban Arterial Facility.

Melisa D. Montemayor – TxDOT – Laredo District Administrator:

History of the Webb County-Laredo RMA (and Loop 20 work):

- **2005-13** – The Laredo District Conducts Studies on Improving Loop 20 To An Urban Arterial Facility.
- **2011** - The Extension of Loop 20 Into South Laredo (7.25-mile Cuatro Vientos Road) Was Opened To Traffic.

Melisa D. Montemayor – TxDOT – Laredo District Administrator:

History of the Webb County-Laredo RMA (and Loop 20 work):

- **2005-13** – The Laredo District Conducts Studies on Improving Loop 20 To An Urban Arterial Facility.
- **2011** - The Extension of Loop 20 Into South Laredo (7.25-mile Cuatro Vientos Road) Was Opened To Traffic.
- **2012** – Webb County Starts Studies To Upgrade Northern Loop 20 To Interstate Standards (*Ongoing*).

Melisa D. Montemayor – TxDOT – Laredo District Administrator:

History of the Webb County-Laredo RMA (and Loop 20 work):

- **2005-13** – The Laredo District Conducts Studies on Improving Loop 20 To An Urban Arterial Facility.
- **2011** - The Extension of Loop 20 Into South Laredo (7.25-mile Cuatro Vientos Road) Was Opened To Traffic.
- **2012** – Webb County Starts Studies To Upgrade Northern Loop 20 To Interstate Standards (*Ongoing*).
- **2013** – The Interchange At SH 359 Was Opened To Traffic.

Melisa D. Montemayor – TxDOT – Laredo District Administrator:

History of the Webb County-Laredo RMA (and Loop 20 work):

- **2005-13** – The Laredo District Conducts Studies on Improving Loop 20 To An Urban Arterial Facility.
- **2011** - The Extension of Loop 20 Into South Laredo (7.25-mile Cuatro Vientos Road) Was Opened To Traffic.
- **2012** – Webb County Starts Studies To Upgrade Northern Loop 20 To Interstate Standards *(Ongoing)*.
- **2013** – The Interchange At SH 359 Was Opened To Traffic.
- **2013** – Webb County and the City of Laredo (RMA "Petitioners") Officially Initiated the RMA process *(Including County/City Resolutions For Forming The Webb Co.-Laredo RMA and For Using Alternative Funding Mechanisms)*.

Melisa D. Montemayor – TxDOT – Laredo District Administrator:

History of the Webb County-Laredo RMA (and Loop 20 work):

- **2005-13** – The Laredo District Conducts Studies on Improving Loop 20 To An Urban Arterial Facility.
- **2011** - The Extension of Loop 20 Into South Laredo (7.25-mile Cuatro Vientos Road) Was Opened To Traffic.
- **2012** – Webb County Starts Studies To Upgrade Northern Loop 20 To Interstate Standards *(Ongoing)*.
- **2013** – The Interchange At SH 359 Was Opened To Traffic.
- **2013** – Webb County and the City of Laredo (RMA "Petitioners") Officially Initiated the RMA process *(Including County/City Resolutions For Forming The Webb Co.-Laredo RMA and For Using Alternative Funding Mechanisms)*.
- **2014** – "Petitioners" Finalize The RMA Petition.

Melisa D. Montemayor – TxDOT – Laredo District Administrator:

Organization / Capabilities of the Webb County-Laredo RMA :

RMA Boundaries = Webb County

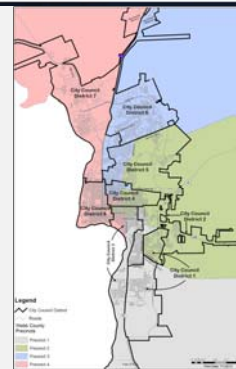


Melisa D. Montemayor – TxDOT – Laredo District Administrator:

Organization / Capabilities of the Webb County-Laredo RMA :

RMA Boundaries

- **The RMA Board Will Consist Of Nine Members:**



Melisa D. Montemayor – TxDOT – Laredo District Administrator:

Organization / Capabilities of the Webb County-Laredo RMA :

RMA Boundaries

- **The RMA Board Will Consist Of Nine Members:**

- The Presiding Officer Will Be Appointed By The Governor.



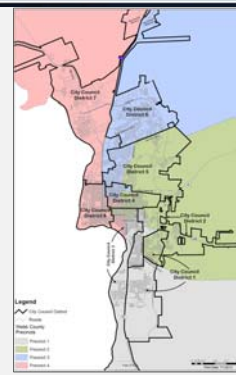
Melisa D. Montemayor – TxDOT – Laredo District Administrator:

Organization / Capabilities of the Webb County-Laredo RMA :

RMA Boundaries

- **The RMA Board Will Consist Of Nine Members:**


- The Presiding Officer Will Be Appointed By The Governor.
- Four Members Appointed By The Webb County Commissioners Court (1 each from Precincts 1, 2, 3, and 4).



Melisa D. Montemayor – TxDOT – Laredo District Administrator:

Organization / Capabilities of the Webb County-Laredo RMA :

- RMA Boundaries
- **The RMA Board Will Consist Of Nine Members:**
 - The Presiding Officer Will Be Appointed By The Governor.
 - Four Members Appointed By The Webb County Commissioners Court (1 each from Precincts 1, 2, 3, and 4).
 - Four Members Appointed By The Laredo City Council (1 each from Districts 1&2 / 3&4 / 5&6 / 7&8)

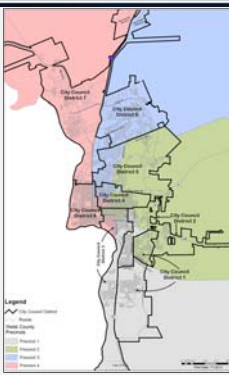


Melisa D. Montemayor – TxDOT – Laredo District Administrator:

Organization / Capabilities of the Webb County-Laredo RMA :

- RMA Boundaries
- **The RMA Board Will Consist Of Nine Members:**

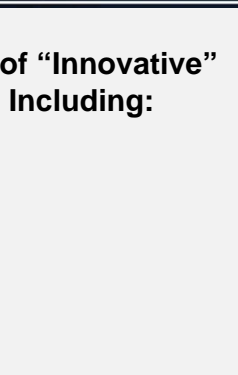
This Board Will Represent The Common Interests In The Region As Well As Providing Representation From Each Political Subdivision In The RMA.



Melisa D. Montemayor – TxDOT – Laredo District Administrator:

Organization / Capabilities of the Webb County-Laredo RMA :

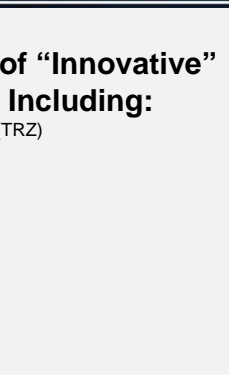
- RMA Boundaries
- RMA Board
- **RMA Implementation of “Innovative” Funding Mechanisms Including:**



Melisa D. Montemayor – TxDOT – Laredo District Administrator:

Organization / Capabilities of the Webb County-Laredo RMA :

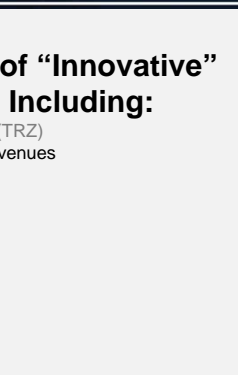
- RMA Boundaries
- RMA Board
- **RMA Implementation of “Innovative” Funding Mechanisms Including:**
 - Transportation Re-Investment Zone (TRZ)



Melisa D. Montemayor – TxDOT – Laredo District Administrator:

Organization / Capabilities of the Webb County-Laredo RMA :

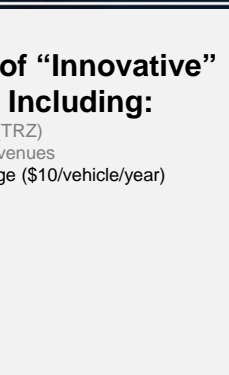
- RMA Boundaries
- RMA Board
- **RMA Implementation of “Innovative” Funding Mechanisms Including:**
 - Transportation Re-Investment Zone (TRZ)
 - City Excess Municipal Enterprise Revenues



Melisa D. Montemayor – TxDOT – Laredo District Administrator:

Organization / Capabilities of the Webb County-Laredo RMA :

- RMA Boundaries
- RMA Board
- **RMA Implementation of “Innovative” Funding Mechanisms Including:**
 - Transportation Re-Investment Zone (TRZ)
 - City Excess Municipal Enterprise Revenues
 - County Vehicle Registration Surcharge (\$10/vehicle/year)



Melisa D. Montemayor – TxDOT – Laredo District Administrator:

Implementation Schedule of the Webb County-Laredo RMA :

Melisa D. Montemayor – TxDOT – Laredo District Administrator:

Final Implementation Schedule of the Webb County-Laredo RMA :

- **January 28, 2014** – Final RMA Petition Submitted To TxDOT

Melisa D. Montemayor – TxDOT – Laredo District Administrator:

Final Implementation Schedule of the Webb County-Laredo RMA :

- **January 28, 2014** – Final RMA Petition Submitted To TxDOT
- **February 4, 2014** – Public Hearing Concerning The Formation Of The Webb Co.-Laredo RMA

Melisa D. Montemayor – TxDOT – Laredo District Administrator:

Final Implementation Schedule of the Webb County-Laredo RMA :

- **January 28, 2014** – Final RMA Petition Submitted To TxDOT
- **February 4, 2014** – Public Hearing Concerning The Formation Of The Webb Co.-Laredo RMA
- **February 13, 2014** – End Of The Written Comment Period

Melisa D. Montemayor – TxDOT – Laredo District Administrator:

Final Implementation Schedule of the Webb County-Laredo RMA :

- **January 28, 2014** – Final RMA Petition Submitted To TxDOT
- **February 4, 2014** – Public Hearing Concerning The Formation Of The Webb Co.-Laredo RMA
- **February 13, 2014** – End Of The Written Comment Period
- **February 27, 2014** – RMA Approval By The Texas Transportation Commission

Melisa D. Montemayor – TxDOT – Laredo District Administrator:

Final Implementation Schedule of the Webb County-Laredo RMA :

- **January 28, 2014** – Final RMA Petition Submitted To TxDOT
- **February 4, 2014** – Public Hearing Concerning The Formation Of The Webb Co.-Laredo RMA
- **February 13, 2014** – End Of The Written Comment Period
- **February 27, 2014** – RMA Approval By The Texas Transportation Commission
- **Spring 2014** – RMA Chairman Appointed By The Governor

Melisa D. Montemayor – TxDOT – Laredo District Administrator:

Final Implementation Schedule of the Webb County-Laredo RMA :

- **January 28, 2014** – Final RMA Petition Submitted To TxDOT
- **February 4, 2014** – Public Hearing Concerning The Formation Of The Webb Co.-Laredo RMA
- **February 13, 2014** – End Of The Written Comment Period
- **February 27, 2014** – RMA Approval By The Texas Transportation Commission
- **Spring 2014** – RMA Chairman Appointed By The Governor
- **Later In 2014** – RMA Board Members Nominated & Approved.

Melisa D. Montemayor – TxDOT – Laredo District Administrator:

Final Implementation Schedule of the Webb County-Laredo RMA :

- **January 28, 2014** – Final RMA Petition Submitted To TxDOT
- **February 4, 2014** – Public Hearing Concerning The Formation Of The Webb Co.-Laredo RMA
- **February 13, 2014** – End Of The Written Comment Period
- **February 27, 2014** – RMA Approval By The Texas Transportation Commission
- **Spring 2014** – RMA Chairman Appointed By The Governor
- **Later In 2014** – RMA Board Members Nominated & Approved.
- **Later In 2014** – RMA Adopts By-Laws and Assembles Staff

Melisa D. Montemayor – TxDOT – Laredo District Administrator:

Proposed Projects of the Webb County-Laredo RMA :

Melisa D. Montemayor – TxDOT – Laredo District Administrator:

Proposed Projects of the Webb County-Laredo RMA :

The Primary Project: Loop 20/US 59/ Future IH 69 Upgrade

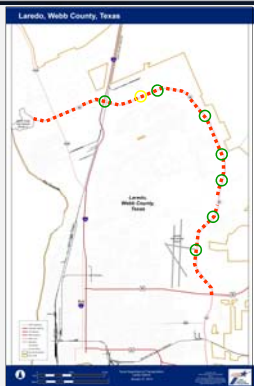


Melisa D. Montemayor – TxDOT – Laredo District Administrator:

Proposed Projects of the Webb County-Laredo RMA :

The Primary Project: Loop 20/US 59/ Future IH 69 Upgrade

- Widen and Construct an Interstate from US 59 to the World Trade International Bridge IV.



Melisa D. Montemayor – TxDOT – Laredo District Administrator:

Proposed Projects of the Webb County-Laredo RMA :

The Primary Project: Loop 20/US 59/ Future IH 69 Upgrade

- Widen and Construct an Interstate from US 59 to the World Trade International Bridge IV.
- This Upgrade would be to Interstate Highway Design Standards. (Note: Loop 20 from IH 35 to World Trade Bridge IV is already at Interstate Standards.)

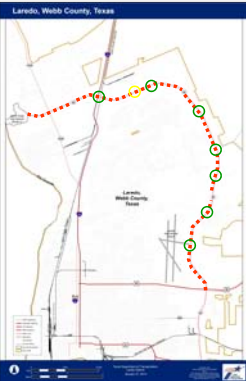


Melisa D. Montemayor – TxDOT – Laredo District Administrator:

Proposed Projects of the Webb County-Laredo RMA :

**The Primary Project:
Loop 20/US 59/
Future IH 69 Upgrade**

- Widen and Construct an Interstate from US 59 to the World Trade International Bridge IV.
- This Upgrade would be to Interstate Highway Design Standards. (Note: Loop 20 from IH 35 to World Trade Bridge IV is already at Interstate Standards.)
- The ROW would be widened from typically 120-ft. to ~400-ft. from north of US 59 to east of International Boulevard.

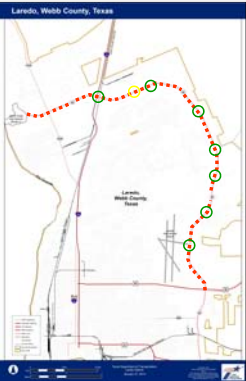


Melisa D. Montemayor – TxDOT – Laredo District Administrator:

Proposed Projects of the Webb County-Laredo RMA :

**The Primary Project:
Loop 20/US 59/
Future IH 69 Upgrade**

- Widen and Construct an Interstate from US 59 to the World Trade International Bridge IV.
- This Upgrade would be to Interstate Highway Design Standards. (Note: Loop 20 from IH 35 to World Trade Bridge IV is already at Interstate Standards.)
- The ROW would be widened from typically 120-ft. to ~400-ft. from north of US 59 to east of International Boulevard.
- The mainlanes would include three travel lanes in each direction.

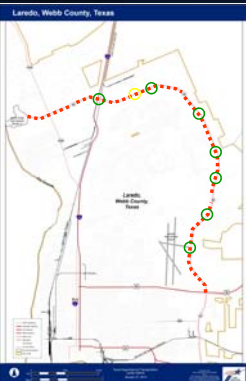


Melisa D. Montemayor – TxDOT – Laredo District Administrator:

Proposed Projects of the Webb County-Laredo RMA :

**The Primary Project:
Loop 20/US 59/
Future IH 69 Upgrade**

- Widen and Construct an Interstate from US 59 to the World Trade International Bridge IV.
- This Upgrade would be to Interstate Highway Design Standards. (Note: Loop 20 from IH 35 to World Trade Bridge IV is already at Interstate Standards.)
- The ROW would be widened from typically 120-ft. to ~400-ft. from north of US 59 to east of International Boulevard.
- The mainlanes would include three travel lanes in each direction.
- Frontage roads would extend from north of US 59 (south of Airport Drive) to World Trade Bridge.

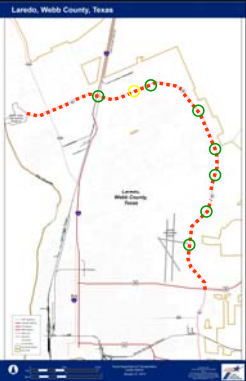


Melisa D. Montemayor – TxDOT – Laredo District Administrator:

Proposed Projects of the Webb County-Laredo RMA :

**The Primary Project:
Loop 20/US 59/
Future IH 69 Upgrade**

- The mainlanes would be elevated over the major highway and street intersections at:
 - IH 35 and U-P Railroad
 - McPherson Road (under construction; opened to traffic in spring 2014)
 - International Boulevard
 - Shiloh Road
 - Del Mar Boulevard
 - University Boulevard
 - Jacaman Road
 - Airport Drive




Melisa D. Montemayor – TxDOT – Laredo District Administrator:

Proposed Projects of the Webb County-Laredo RMA :

**The Primary Project:
Loop 20/US 59/
Future IH 69 Upgrade**

- The mainlanes would be elevated over the major highway and street intersections at:
 - IH 35 and U-P Railroad
 - McPherson Road (under construction; opened to traffic in spring 2014)
 - International Boulevard
 - Shiloh Road
 - Del Mar Boulevard
 - University Boulevard
 - Jacaman Road
 - Airport Drive
- Two additional Direct Connectors To/From IH 35 at the "Milo" Interchange (extending to the east)



Melisa D. Montemayor – TxDOT – Laredo District Administrator:

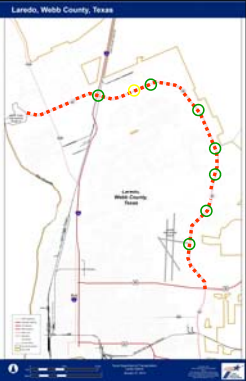
Proposed Projects of the Webb County-Laredo RMA :

**The Primary Project:
Loop 20/US 59/
Future IH 69 Upgrade**

The current estimate to upgrade Loop 20/US 59 to Interstate Standards

\$501 Million*

*Includes Engineering / ROW / Construction / etc.



Melisa D. Montemayor – TxDOT – Laredo District Administrator:

Proposed Projects of the Webb County-Laredo RMA :

**Other Items About The Loop 20/US 59/
Future IH 69 Upgrade:**

Melisa D. Montemayor – TxDOT – Laredo District Administrator:

Proposed Projects of the Webb County-Laredo RMA :

**Other Items About The Loop 20/US 59/
Future IH 69 Upgrade:**

- Loop 20 from US 59 to World Trade Bridge is to be re-designated as US 59 at the February 27th Texas Transportation Commission meeting in Laredo.

Melisa D. Montemayor – TxDOT – Laredo District Administrator:

Proposed Projects of the Webb County-Laredo RMA :

**Other Items About The Loop 20/US 59/
Future IH 69 Upgrade:**

- Loop 20 from US 59 to World Trade Bridge is to be re-designated as US 59 at the February 27th Texas Transportation Commission meeting in Laredo.
- Saunders Street from Loop 20 to IH 35 would become Business US 59.

Melisa D. Montemayor – TxDOT – Laredo District Administrator:

Proposed Projects of the Webb County-Laredo RMA :

**Other Items About The Loop 20/US 59/
Future IH 69 Upgrade:**

- Loop 20 from US 59 to World Trade Bridge is to be re-designated as US 59 at the February 27th Texas Transportation Commission meeting in Laredo.
- Saunders Street from Loop 20 to IH 35 would become Business US 59.
- Loop 20/US 59 will be officially designated on February 27th as part of the "Future" IH 69 corridor.

Melisa D. Montemayor – TxDOT – Laredo District Administrator:

Proposed Projects of the Webb County-Laredo RMA :

**Other Items About The Loop 20/US 59/
Future IH 69 Upgrade:**

- Loop 20 from US 59 to World Trade Bridge is to be re-designated as US 59 at the February 27th Texas Transportation Commission meeting in Laredo.
- Saunders Street from Loop 20 to IH 35 would become Business US 59.
- Loop 20/US 59 will be officially designated on February 27th as part of the "Future" IH 69 corridor.
- When Loop 20/US 59 is constructed to Interstate Standards, TxDOT will petition AASHTO and FHWA to designate it as part of IH 69.

Melisa D. Montemayor – TxDOT – Laredo District Administrator:

Proposed Projects of the Webb County-Laredo RMA :

- The Primary Project: Loop 20/US 59/Future IH 69 Upgrade
- **Other Possible Future Projects Currently Identified By The RMA Include:**

Melisa D. Montemayor – TxDOT – Laredo District Administrator:

Proposed Projects of the Webb County-Laredo RMA :

- The Primary Project: Loop 20/US 59/Future IH 69 Upgrade
- **Other Possible Future Projects Currently Identified By The RMA Include:**
 - Cuatro Vientos Road Southern Extension

Melisa D. Montemayor – TxDOT – Laredo District Administrator:

Proposed Projects of the Webb County-Laredo RMA :

- The Primary Project: Loop 20/US 59/Future IH 69 Upgrade
- **Other Possible Future Projects Currently Identified By The RMA Include:**
 - Cuatro Vientos Road Southern Extension
 - US 59/IH 69 East Of Laredo

Melisa D. Montemayor – TxDOT – Laredo District Administrator:

Proposed Projects of the Webb County-Laredo RMA :

- The Primary Project: Loop 20/US 59/Future IH 69 Upgrade
- **Other Possible Future Projects Currently Identified By The RMA Include:**
 - Cuatro Vientos Road Southern Extension
 - US 59/IH 69 East Of Laredo
 - Green Ranch Parkway

Melisa D. Montemayor – TxDOT – Laredo District Administrator:

Proposed Projects of the Webb County-Laredo RMA :

- The Primary Project: Loop 20/US 59/Future IH 69 Upgrade
- **Other Possible Future Projects Currently Identified By The RMA Include:**
 - Cuatro Vientos Road Southern Extension
 - US 59/IH 69 East Of Laredo
 - Green Ranch Parkway
 - Laredo Outer Loop

Melisa D. Montemayor – TxDOT – Laredo District Administrator:

Possible Funding Mechanisms Utilized By This RMA :

Melisa D. Montemayor – TxDOT – Laredo District Administrator:

Possible Funding Mechanisms Utilized By This RMA :

- **“Traditional” Federal/State Funds**

Melisa D. Montemayor – TxDOT – Laredo District Administrator:

Possible Funding Mechanisms Utilized By This RMA :

- “Traditional” Federal/State Funds
- “Innovative”, Locally-Based Funding Sources Including:

Melisa D. Montemayor – TxDOT – Laredo District Administrator:

Possible Funding Mechanisms Utilized By This RMA :

- “Traditional” Federal/State Funds
- “Innovative”, Locally-Based Funding Sources Including:
 - Transportation Re-Investment Zone (TRZ)

Melisa D. Montemayor – TxDOT – Laredo District Administrator:

Possible Funding Mechanisms Utilized By This RMA :

- “Traditional” Federal/State Funds
- “Innovative”, Locally-Based Funding Sources Including:
 - Transportation Re-Investment Zone (TRZ)
 - City Excess Municipal Enterprise Revenues

Melisa D. Montemayor – TxDOT – Laredo District Administrator:

Possible Funding Mechanisms Utilized By This RMA :

- “Traditional” Federal/State Funds
- “Innovative”, Locally-Based Funding Sources Including:
 - Transportation Re-Investment Zone (TRZ)
 - City Excess Municipal Enterprise Revenues
 - Optional County Fee For Transportation Projects

Melisa D. Montemayor – TxDOT – Laredo District Administrator:

Possible Funding Mechanisms Utilized By This RMA :

- “Traditional” Federal/State Funds
- “Innovative”, Locally-Based Funding Sources Including:
 - Transportation Re-Investment Zone (TRZ)
 - City Excess Municipal Enterprise Revenues
 - Optional County Fee For Transportation Projects

Note: These “Innovative” Funding Mechanisms Will Allow For Bonding Capacity or SIB Loan To Accelerate Construction of Projects.

Melisa D. Montemayor – TxDOT – Laredo District Administrator:

Facts About The Loop 20/US 59 Project Planning Process:

Melisa D. Montemayor – TxDOT – Laredo District Administrator:

Facts About The Loop 20/US 59 Project Planning Process:

- The Loop 20/US 59 Project Is Supported By The Laredo MPO.

Melisa D. Montemayor – TxDOT – Laredo District Administrator:

Facts About The Loop 20/US 59 Project Planning Process:

- The Loop 20/US 59 Project Is Supported By The Laredo MPO.
- It Is Included In The 2010-35 Metropolitan Transportation Plan.

Melisa D. Montemayor – TxDOT – Laredo District Administrator:

Facts About The Loop 20/US 59 Project Planning Process:

- The Loop 20/US 59 Project Is Supported By The Laredo MPO.
- It Is Included In The 2010-35 Metropolitan Transportation Plan.
- It Will Be Included In The Unified Transportation Program (UTP) And The Transportation Improvement Program (TIP) When Construction Funding Is Allocated.

Melisa D. Montemayor – TxDOT – Laredo District Administrator:

Facts About the Environmental Process:

Melisa D. Montemayor – TxDOT – Laredo District Administrator:

Facts About the Environmental Process:

The Environmental Process will follow The National Environmental Protection Act (NEPA) And All Other Environmental Regulations For Construction Projects Implemented or Funded Through the RMA.

Melisa D. Montemayor – TxDOT – Laredo District Administrator:

Facts About the Environmental Process:

A Comprehensive Range of Factors Will Be Studied:

- Socio-Economic Setting.
- Biological Factors (Including Threatened & Endangered Species)
- Waters Of The U.S.
- Historical Or Archeological Resources
- Impacts To Parks
- Air Quality
- Noise Quality
- Hazardous Materials
- Utilities
- Indirect And Cumulative Impacts
- Public Outreach And Gathering Public Input

Melisa D. Montemayor – TxDOT – Laredo District Administrator:

Summary of Benefits of the Webb County-Laredo RMA:

Melisa D. Montemayor – TxDOT – Laredo District Administrator:

Summary of Benefits of the Webb County-Laredo RMA:

- ✓ Invests Local Dollars In Laredo

Melisa D. Montemayor – TxDOT – Laredo District Administrator:

Summary of Benefits of the Webb County-Laredo RMA:

- ✓ Invests Local Dollars In Laredo
- ✓ Leverages The Limited Amount Of Federal/State Construction Funds

Melisa D. Montemayor – TxDOT – Laredo District Administrator:

Summary of Benefits of the Webb County-Laredo RMA:

- ✓ Invests Local Dollars In Laredo
- ✓ Leverages The Limited Amount Of Federal/State Construction Funds
- ✓ Accelerates Upgrades To The Transportation System In Laredo

Melisa D. Montemayor – TxDOT – Laredo District Administrator:

Recess:

10-Minute Recess
Before the
Comment Period

Melisa D. Montemayor – TxDOT – Laredo District Administrator:

Recess:

(The Public Comment Segment Will Now Begin)

**Recess Is
Over**

96

Verbal Comment Period:**To Make Verbal Comments At Tonight's Hearing:**

- Submit Your Comment Request Form With Your Name/Address
- Stand Up/Come Forward When Your Name Is Called
- Please Conclude Your Comments In 3-Minutes
- Your Questions/Comments Will Be Recorded By The Court Reporter And Will Be Included In the Hearing Summary
- To Insure Complete and Accurate Answers, All Questions and Comments Will Be Answered By Letter To You Shortly After The Close Of The 10-Day Comment Period

Melisa D. Montemayor – TxDOT – Laredo District Administrator:

Written Comments:

- Submit Your Written Comments Tonight With Your Name/Address *(A comment form with where to submit your comments are in your handout packet.)*
- Written Comments Must Be Received Before 5:00 PM, February 13, 2014 To Be Included In The Public Hearing Summary
- To Insure Complete and Accurate Answers, All Questions and Comments Will Be Answered By Letter To You Shortly After The Close Of The Written Comment Period

Send Your Comments To:

Texas Department of Transportation
 Attn: Melisa D. Montemayor
 1817 Bob Bullock Loop
 Laredo, Texas 78043
E-Mail: Melisa.Montemayor@TxDOT.gov
Phone: (956) 712-7400

Melisa D. Montemayor – TxDOT – Laredo District Administrator:

Adjournment:

Thank You For
Participating

Melisa D. Montemayor – TxDOT – Laredo District Administrator:

Written Comments:

- Submit Your Written Comments Tonight With Your Name/Address *(A comment form with where to submit your comments are in your handout packet.)*
- Written Comments Must Be Received Before 5:00 PM, February 13, 2014 To Be Included In The Public Hearing Summary
- To Insure Complete and Accurate Answers, All Questions and Comments Will Be Answered By Letter To You Shortly After The Close Of The Written Comment Period

Send Your Comments To:

Texas Department of Transportation
 Attn: Melisa D. Montemayor
 1817 Bob Bullock Loop
 Laredo, Texas 78043
E-Mail: Melisa.Montemayor@TxDOT.gov
Phone: (956) 712-7400

Melisa D. Montemayor – TxDOT – Laredo District Administrator:

TEXAS DEPARTMENT OF TRANSPORTATION
PUBLIC HEARING

WEBB COUNTY-CITY OF LAREDO
REGIONAL MOBILITY AUTHORITY PUBLIC HEARING

Texas Department of Transportation
Laredo District
1817 Bob Bullock Loop
Laredo, Texas

February 4, 2014

BE IT REMEMBERED that on the 4th day of February,
2014, the following proceedings were held at the
Texas Department of Transportation, 1817 Bob Bullock
Loop, Laredo, Webb County, Texas.

ACTION REPORTING

1-800-884-1024 / 956-631-1024

1 MS. MONTEMAYOR: Welcome to the Webb
2 County-City of Laredo Regional Mobility Authority
3 public hearing. This is a required hearing for the
4 formation of a Regional Mobility Authority here in
5 Webb County, City of Laredo, Texas.

6 It's February 4th, 2014 for the record.
7 This is the agenda for tonight. We're gonna follow it
8 strictly. Again, it's a public hearing, I apologize,
9 but I'll be having to read a lot of this just so our
10 court reporter can get it on the record officially, so
11 we can have that, you know, for our future records.

12 But here is our general agenda. Welcome
13 and introductions. Do we have any elected officials
14 with us here? We have Judge Danny Valdez. Judge,
15 thank you so much for being here this evening. Any
16 other elected officials?

17 Okay. We will accept verbal and written
18 comments tonight, and we have with you -- you should
19 have picked up -- Mike has an example of one right
20 here. You should have picked up a packet at the back
21 of the room. In that packet, I believe it's page 3,
22 is a comment card. If you choose to speak here
23 tonight in front of the group, please fill out that
24 card. You can hand it to Mike here in the front, or
25 Marissa in the back, any one of the TxDOT staff. I

1 will call you after our recess period, and you can
2 come to the front and make your comments verbally in
3 front of the group. If you would like not to speak in
4 front of the group, you're welcome on the very last
5 page of that packet is a comment sheet. You're
6 welcome to write your comments in, hand them in
7 tonight or mail them in, or you're welcome to come
8 after the meeting and give a statement to our court
9 reporter.

10 The public inputs on the proposed RMA
11 Loop 20/US 59/future IH 69 construction project,
12 we're gonna be moving into preliminary design phase,
13 that's what's gonna be addressed.

14 The need for improved mobility in Laredo
15 and Webb County. Basically, the need for this project
16 is great. It's going to be very effective in the
17 efficient transportation, which is so important to
18 our community, our region, in Texas and in the entire
19 United States, being that, you know, we are on the
20 border, and because of the ports of entry here in
21 Laredo is such an important factor of our economy here
22 in this area of Texas.

23 Another need is because our population
24 is growing so rapidly here in Laredo and Webb County.
25 You know, on a monthly basis, we have people moving

1 into this area, so, again, a need for the project.
2 The 2010 census told us that we have now over 250,000
3 people in Webb County. We believe that by 2030 those
4 numbers will exceed 400,000 people here in Webb
5 County; substantial increases.

6 Another need for the improvement is the
7 international trade levels, they continue to grow.
8 We have more and more trucks crossing our border,
9 wonderful for the economy. We totally accept them
10 with open arms. Of course, it has its toll on the
11 transportation system. It's something that we need
12 to keep up with. There's three point five million
13 international truck crossings that were recorded in
14 2013. The traffic levels are only going to increase
15 with the increasing population that we're seeing,
16 and, of course, trade levels that increase daily here
17 in Laredo.

18 We measure the efficiency of our
19 roadways in terms of level of service. We call it
20 LOS. We expect that this level of service is only
21 going to worsen, especially on Loop 20, with this
22 increase in population and with trade. We expect that
23 this level of service on Loop 20 will decline to an F,
24 and this is rated on kind of a grading system, A
25 through F, A being the best, F being the worst, so

1 we'll probably decline to a level service F, mainly at
2 the intersections by around 2030, if we do nothing on
3 Loop 20.

4 The bottom line. Because of the
5 shortage of the traditional funding that we have for
6 our roads, which is gas tax sources, we need to think
7 innovative, and these are solutions that are very
8 essential to keeping up with the transportation needs
9 in Laredo.

10 We can do this, like we're going to be
11 talking about tonight, through a regional mobility
12 authority that has the ability to use what we call
13 innovative/alternative transportation funding sources
14 that are not typically available to TxDOT by itself.

15 As far as a detailed background and
16 legal basis and requirements for all the RMA's in
17 Texas, if you would like that detailed information,
18 you can pick up a copy at the back. That copy at the
19 back will go into very detailed processes as how an
20 RMA can get approval for various projects through our
21 Texas Transportation Commission timelines and so
22 forth.

23 A summary of the general RMA facts.
24 Right now there's eight RMA's in Texas. Starting in
25 the south, the yellow one, that is the Cameron County

1 RMA, next to it is the Hidalgo RMA in purple. We head
2 up north to the center of Texas, and that is the Alamo
3 RMA in red. Further towards Austin, Central Texas
4 RMA; and then we head onto East Texas, that purple
5 small RMA is the Grayson County RMA; next to that in
6 blue is the Sulphur River RMA, and then the one in
7 green, the large one, is the Northeast Texas RMA,
8 typically called the NET RMA. So, you know, we will,
9 hopefully, and in the very near future, add a box
10 there in Webb County, which would be the Webb County-
11 City of Laredo RMA.

12 RMA's have a variety of powers and tools
13 to fund transportation construction projects so it
14 can solve our transportation issues. Localized
15 governances accountable to the local population.

16 Information on this RMA, the goals and
17 benefits. First and foremost, it's to improve
18 mobility in and around Laredo. Basically, we can be
19 able to get around Laredo in our vehicles, trucks,
20 whatever that might be, in a more efficient fashion.
21 It helps meet the transportation needs of the rapidly
22 growing population that I spoke about earlier, and it
23 helps meet the transportation needs of the growing
24 international trade and trucking business that's so
25 important to our economy.

1 The history of this RMA. We started
2 back in 2005, and just up to just recently with the
3 district, TxDOT district, conducting studies on how
4 to improve Loop 20 into an urban arterial facility.

5 In 2011, we did the extension of Loop 20
6 into South Laredo, what we call the Cuatro Vientos
7 Road, a 7.25 new location roadway, and we opened that
8 to traffic in 2011.

9 In 2012, Webb County took on Loop 20 as
10 a sponsored project and started studies to upgrade
11 the northern segment of that -- of Loop 20,
12 specifically from I-35 to near Havana International
13 Boulevard, in preparing the PS&E environmental
14 documentation. PS&E is the project specification and
15 estimates. Basically, the set of plans such that we
16 would be ready; in case construction dollars came to
17 the area, we would be ready to let that set of plans
18 for bids and construct that segment of Loop 20. In
19 2013 we opened the interchange at 359 and Loop 20,
20 which we call the Cuatro Vientos Interchange,
21 currently open to traffic.

22 In the same year, Webb County and the
23 City of Laredo, which we will call the RMA
24 Petitioners, officially initiated the RMA process,
25 and this includes the city and the county resolutions

1 for forming the Webb County-Laredo RMA and for using
2 alternative funding mechanisms.

3 2014, currently, the petitioners
4 finalized the RMA within this past month, and within
5 that petition, we included RMA boundaries, which is
6 the boundaries of Webb County that you see on the
7 screen here.

8 The RMA board is proposed to consist of
9 nine members. The presiding officer, Governor Perry,
10 will appoint. Then Webb County Commissioner's Court
11 will appoint four members, one member representing
12 each precinct of the county. The City of Laredo
13 Council will appoint four members; one from Districts
14 1 and 2, another from Districts 3 and 4, 5 and 6, and
15 7 and 8.

16 The map you see here, the colored
17 boundaries are the Webb County precincts. The bold
18 black outline represent the City Council districts.

19 The board will represent the common
20 interests in the region, as well as providing
21 representation from each political subdivision in the
22 RMA.

23 The RMA implementation of innovative
24 funding mechanisms includes -- and these are just
25 some of the ideas, some of the options that the RMA

1 will be able to utilize in terms of obtaining revenue
2 to fund sponsored projects, one being the formation
3 of a transportation re-investment zone. They can
4 look at using city excess municipal enterprise
5 revenues; and, of course, the county vehicle
6 registration surcharge, \$10 per vehicle per year,
7 which, by the way, the State Legislature passed
8 approval on this past legislative session, which
9 actually those revenues cannot be utilized unless a
10 regional mobility authority is formed here in Webb
11 County. Any questions on that?

12 The final implementation -- the
13 implementation schedule of the Webb County-Laredo
14 RMA. On January 28th, the RMA petition was finalized
15 and submitted to our TxDOT offices here in Laredo.

16 On February 4th, that's tonight, we're
17 holding the public hearing concerning the formation
18 of this RMA.

19 On the 13th, we'll end the written
20 comment period. And that's set forth in the packet
21 that you received. There's a comment period. We will
22 receive your comments, if you choose to respond, in
23 writing after this meeting, we'll accept them only up
24 to the 13th. You're welcome to mail them in, or you
25 can come bring them by our office at your convenience.

ACTION REPORTING

1-800-884-1024 / 956-631-1024

1 On February 27th, 2014, the RMA approval
2 will be done by the Texas Transportation Commission.
3 I invite all of you -- you know, it's an exciting time
4 for us. We will be hosting our Texas Transportation
5 Commission meeting here in Laredo. They'll be on the
6 road. I will be at Texas A&M University International
7 with our Texas Transportation Commission here in
8 Laredo, officially approving the RMA on the 27th.
9 Everyone here is welcome to attend.

10 In the spring of 2014, the RMA chairman
11 will be appointed by the governor. I don't have an
12 exact month, but it will be sometime in the spring.
13 And then later on this year the RMA board members will
14 be nominated and approved. Later on within this year,
15 the RMA will adopt their by-laws, and then they'll
16 assemble their staff.

17 Some of the proposed projects that Webb
18 County-Laredo RMA are considering. The primary
19 project, of course, is the Loop 20/59/future I-69
20 upgrade, and that would be upgrading what you see up
21 here in front of the TxDOT office and on up to I-35,
22 which is Loop 20, but to interstate standards. So,
23 you know, you'll have associated overpasses that I'll
24 talk about in a moment, and main lanes and frontage
25 roads. So, again, widen and construct an interstate

1 from US 59 to World Trade International Bridge IV.
2 The upgrade would be to interstate highway design
3 standards. A particular mention. The portion
4 between World Trade Bridge and I-35 is actually
5 already to interstate standards. So we will begin
6 from I-35 headed towards 59 to do the same.

7 The right-of-way would be widened
8 typically from about 120 feet to about 400 feet from
9 north of 59 to east of International Boulevard.

10 The main lanes will include three travel
11 lanes in each direction, and the frontage roads would
12 extend from north of 59, which is south of Airport
13 Drive, to World Trade Bridge.

14 Some of the particular areas where we'll
15 have, you know, major intersections, that would be
16 I-35 and the U-P Railroad. There we would widen that
17 overpass and add frontage roads.

18 The McPherson road, actually, that's
19 already under construction, and again I invite you,
20 tentatively, we'll hopefully have the ribbon cutting
21 for the McPherson overpass on February 24th. It's
22 still tentative, but again I invite all of you to
23 attend.

24 One of the proposed interchanges that
25 would be part of this RMA would be the International

1 Boulevard interchange, Shiloh Road, Del Mar
2 Boulevard, University Boulevard, Jacaman, and
3 Airport. And you can see those as the green circles
4 on the map there in front of you.

5 Two additional direct connectors to and
6 from I-35 at the Milo interchange, and those would be
7 extending to the east, would also be included.

8 The current estimate for that upgrade to
9 Loop 20 is right now at 501 million. That includes,
10 though, all the preliminary engineering to the plans,
11 the environmental documentation, utilities, the
12 right-of-way acquisition, and construction. Again,
13 this is a draft figure based on what we know right
14 now.

15 Other items about Loop 20/US 59 and the
16 future I-69 upgrade. Loop 20 from US 59 to World
17 Trade Bridge is to be re-designated as 59 -- US 59 at
18 the February 27th Texas Transportation Commission
19 meeting here in Laredo. So with that said, Saunders
20 Street from Loop 20 to 35 will become Business 59; not
21 US 59, but Business 59. Then Loop 20/US 59 will be
22 officially designated on February 27th as part of the
23 future I-69 corridor. I stress future.

24 When Loop 20/US 59 is constructed to
25 interstate standards -- so once the construction is

1 done to interstate standards, then we, TxDOT, will
2 petition to AASHTO and Federal Highway Administration
3 to designate it as part of I-69. And this is a
4 process that we must follow, because it is a federally
5 funded facility.

6 Other possible future projects currently
7 identified by the RMA include the Cuatro Vientos Road
8 southern extension. This would be to extend Loop 20
9 from currently Mangana-Hein Road south to US 83.; US
10 59/I-69 east of Laredo. This would be 59 as you see
11 it today east towards Freer and ending at the Duval
12 County line. Why end at the Duval County line?
13 Because that's the limits of the Laredo -- Laredo
14 District. As far as the RMA, that would end at the
15 Webb County line, but typically we would look at that
16 as a corridor with our neighboring district, which
17 would be Corpus Christi District.

18 Another possible project would be the
19 Green Ranch Parkway. This is a roadway that would
20 extend off of 1472, FM 1472 near FM 30 -- 338 and
21 connect to IH 35.

22 And, of course, the Laredo outer loop, a
23 project that extends to the east of Laredo,
24 approximately, six miles east of Loop 20, that would
25 serve as a relief route to the existing Loop 20.

1 Traditional state and federal funds are
2 one of the possible mechanisms that the RMA could
3 utilize are traditional funds that typically come to
4 TxDOT; innovative locally based funding sources,
5 which would include the TRZ, the transportation
6 re-investment zone; again, the city excess municipal
7 enterprise revenues; and an optional count fee for
8 transportation projects.

9 A special note. These innovative
10 funding mechanisms will allow for bonding capacity or
11 perhaps a SIB loan to accelerate construction of any
12 of these projects. A SIB loan, for those of you that
13 don't know, is a state infrastructure bank loan.
14 That's a low interest loan the State of Texas can
15 afford the County, or the City, or in this case the
16 RMA for transportation infrastructure projects.

17 Facts about Loop 20/59 project planning
18 process. The Loop 20/59 project is totally supported
19 by the Laredo Metropolitan Planning Organization. It
20 is included in the MPO's 2010-35 Metropolitan
21 Transportation Plan, and this is the MPO's short,
22 medium and long-range plan for projects, specifically
23 transportation projects, within the MOP boundaries.

24 It will be included in what we call our
25 Texas Department of Transportation Unified

1 Transportation Program, the UTP, and the TIP, the
2 Transportation Improvement Program, once construction
3 funding is allocated. These two TxDOT documents or
4 programs are situated such that the construction
5 funding has to be allocated and identified before the
6 project is in these plans.

7 Facts about the environmental process.
8 It will follow NEPA, the National Environmental
9 Policy Act, and environmental regulations for
10 construction projects implemented or funded through
11 the RMA.

12 Some of the factors that the
13 environmental process will look at shown here on the
14 screen. I won't read them all, but you're welcome to
15 look at those. A lot of natural and socioeconomic
16 factors will be looked at.

17 The summary of benefits. It invests the
18 local dollars back into Laredo. It leverages the
19 limited amount of federal and state construction
20 funds that we have. So the amount of funds,
21 traditional funds that we have coming to TxDOT Laredo
22 District would, in essence, be leveraged by funding
23 that the RMA would be eligible for. And so together
24 -- we may not be able to by ourselves be able to
25 construct one project, but if we come together, we

1 would be able to construct these projects today,
2 rather than 30, 40 years from now. And, of course, it
3 accelerates the upgrades to the transportation system
4 in Laredo.

5 That basically concludes our official
6 presentation on the RMA, a little bit about the RMA,
7 the projects about the RMA.

8 We're gonna take a 10 minute recess.
9 This will give us all time. If you would like to,
10 within this 10 minutes, fill out a speaker
11 information card, if you wish to say something in
12 front of the audience, you're welcome to do that.
13 Again, fill out the card, give it to any one of the
14 TxDOT people that you see here, or at the back table.
15 After the 10 minute recess, we'll come back, give
16 those comments, and then continue and conclude the
17 meeting.

18 (10 Minute Break)

19 MS. MONTEMAYOR: All right. We'll begin
20 our verbal comment period. First to the podium I will
21 call Judge Danny Valdez.

22 MR. VALDEZ: Thank you. First of all,
23 Melisa, let me thank you for hosting this public forum
24 or public -- the public to be here with us.

25 Good evening, I'm Danny Valdez, Webb

1 County Judge, and I want to take this opportunity to
2 thank TxDOT, the City of Laredo, for all their efforts
3 in working with Webb County as we move one step closer
4 tonight in finalizing the first ever Webb County-City
5 of Laredo RMA in the state of Texas.

6 As the City and County continue to grow
7 at an accelerated rate, so, too, do the demands on the
8 necessary transportation infrastructure that needs to
9 be in place to keep up with the times. This proposed
10 RMA will help deliver this infrastructure that is
11 desperately needed much sooner and with less delays.

12 As you know, the proposed project is to
13 upgrade to interstate standards Loop 20 from US 59 to
14 the World Trade Bridge in hopes of designating this
15 roadway as part of the future I-69 corridor.

16 Webb County is committed to making the
17 financial investment locally to help accelerate this
18 project, which is estimated at well over 300 million
19 dollars. The County has passed legislation allowing
20 for an optional county fee for vehicle transportation
21 projects, which will be allocated to the RMA. This
22 will allow us to invest our local dollars, along with
23 the City of Laredo and TxDOT, in an effort to expedite
24 the completion of the additional phases needed to
25 bring Loop 20 to interstate highway standards, which

1 will improve the flow of traffic by increasing
2 mobility, and promote and enhance the safety and
3 welfare of this community.

4 I wholeheartedly support the effort
5 being made to form and approve this RMA, and I look
6 forward to the Texas Transportation Commission's
7 favorable consideration in the upcoming weeks.

8 I thank you for this opportunity, and
9 hopefully this is the first step in developing the
10 RMA. Thank you.

11 MS. MONTEMAYOR: Thank you so much,
12 Judge.

13 Next our Laredo City Manager, Carlos
14 Villarreal.

15 MR. VILLARREAL: Thank you, Melisa.
16 Good evening, my name is Carlos Villarreal, and I'm
17 the city manager of the City of Laredo.

18 It is no secret that Laredo is marked
19 the number three of all ports in the United States.
20 Laredo did more trade with Mexico in 2012 and 2013
21 than any other customs district with any nation in
22 history. The implications of the continued trade
23 growth experienced by Laredo are not just regional or
24 statewide, but national.

25 However, this astounding volume of trade

1 does not come with it's own adverse effects.
2 Currently, Loop 20 operates at a C or D level of
3 service, and 2035 forecast traffic volumes of almost
4 35,000 vehicles per day along the Laredo section of US
5 59.

6 Laredo and Webb County need to be
7 prepared. The City of Laredo and Webb County are
8 working as a unified team to move the development of
9 State Loop 20 and US Highway 59 to interstate highway
10 standards. The City and County agree there must be a
11 plan which sets for the priorities to be implemented,
12 especially since Loop 20 has been recognized by the
13 I-69 Segment 4 and 5 committee for future project
14 development. The City and County both realize what
15 the priorities are. Upgrade and construct Loop 20 to
16 interstate highway standards.

17 We need to insure that the state and
18 federal government continue to support the
19 development of the Laredo segment of I-69. There's no
20 better way to insure that federal and state support
21 continue than by the City and County actively
22 participating in the funding of this project. This
23 creates the framework for a strategic partnership
24 between Webb County, the City of Laredo, TxDOT, the
25 Federal Highway Administration, with each partner

1 contributing to the overall goal. All parties would
2 prefer complete funding for the loop. We all realize
3 that this may not be possible.

4 And let me say this, more trucks and CBP
5 is expecting this year that there will be about 800
6 more trucks handling perishables, the ones going
7 right now to Nogales and to -- to Arizona. Once the
8 Highway 40 project is complete, we will have more than
9 800 trucks coming our way.

10 It is incumbent upon us to move forward
11 for the betterment of this community, and one of the
12 best ways is to participate in the development and
13 implementation of transportation projects. This is
14 why the city council authorized me to pursue a
15 regional mobility authority in partnership with Webb
16 County.

17 The petition requesting authorization to
18 form an RMA has been signed, sealed and delivered by
19 the City and by the County. The RMA is one of the
20 recognize mechanisms to move transportation projects
21 forward, and the City of Laredo is in full support of
22 its creation.

23 I do want to emphasize, Melisa, and
24 we've had the discussion that we had recently when we
25 attended the meeting on the high speed rail in

1 Washington with Commissioner Jeff Austin, who was
2 present, and we told him that we feel that we need to
3 be a part of it. But we need TxDOT to bring more skin
4 to the game. We should not expect what we normally
5 get on a year to year basis. We expect for TxDOT to
6 put in more, the City of Laredo and Webb County are
7 prepared to put in more, to make sure that we finalize
8 construction of all these grade separations so that
9 we can avoid headaches for the public and TxDOT will
10 eventually save money in its construction.

11 We are prepared, we're looking at other
12 options, just for your knowledge, we are looking at a
13 possible pipeline were I can sell the effluent that we
14 get, that right now we do not get credit for if we
15 dump it back into the river, but to be able to run it
16 to the Eagle Ford Shale at a point, a dispenser, and
17 we can be able to sell water, derive a benefit that we
18 can invest part of it, not all of it, but part of it
19 in the construction of this corridor.

20 My instructions were to be able to come
21 and to let everybody know, of course, with the
22 partnership we have with Webb County, that we move
23 forward, that we support this endeavor. It will be
24 good for Laredo, but it also will be good for the
25 state of Texas and the United States.

1 Thank you very much.

2 MS. MONTEMAYOR: Thank you so much, Mr.
3 Villarreal.

4 Next we have Mr. Gerry Schwebel, IBC
5 Bank.

6 MR. SCHWEBEL: Good evening. For the
7 record, my name is Gerry Schwebel. I am here as
8 citizen, private sector, also participant, and also
9 as a representative of my company who has a great
10 investment in our community, as well, that's IBC
11 Bank.

12 First of all, let me commend, also,
13 TxDOT, Ms. Montemayor, the City and the County for
14 having the vision to step forward and really consider
15 the importance of what an RMA is, and what its role
16 will be, not just now but in the future. I think it's
17 long coming, that we need to be engaged together, both
18 public and private sector initiatives, to plan
19 accordingly what's best for our community. The
20 growth is very relevant.

21 I'm not here with prepared remarks, but
22 a lot of it will come from up here -- from my head and
23 from my heart. That it's important that we all, you
24 know, work together and plan, and plan accordingly,
25 because if we don't plan, we're destined to fail.

1 So what we've got here is, quite
2 frankly, what has been said before. We have an area
3 of the country that's already generated over 229
4 billion dollars of trade, and, yet, we must insure
5 that we have a vision and a plan to how we plan for
6 that continued growth. Not just the cross border
7 business, but as a result of the Eagle Ford Shale
8 role, and the importance in development of our part of
9 the world.

10 So how we participate, what stakeholder
11 is involved? The challenge I think that is before us,
12 it will be before the County, it will be before the
13 City, if you select the members of the RMA to be
14 individuals that have the knowledge base and have the
15 passion and the interest to be engaged and work
16 together and try to come up with the best and most
17 effective solution to our growing pains that we're
18 all experiencing; but at the same time understand
19 that if we are going to continue to grow in an
20 effective manner, and with an effective plan, it
21 revolves -- it involves a stakeholder participation,
22 both private and public sector involvement.

23 So my objective here commenting, and I
24 will submit some more written comments, as well, that
25 we -- those of us that are involved in the private

1 sector are willing participants, we want to be
2 engaged in the planning, in fact, we believe we should
3 be engaged in the planning so that we can go forth and
4 have all stakeholders be part of the process.

5 Like I said, I commend the City and the
6 County for having the vision to create a regional
7 mobility authority. Some of us are involved at the
8 state, national, and international level, and other
9 plans, freight mobility, as well as all other forms of
10 mobility. One form of transportation that we're not
11 even talking about will be pipeline transportation,
12 when we talk about the energy sector. So keep that in
13 mind.

14 So I invite you all and I thank you all
15 for having this public hearing, and for the record,
16 I'll be submitting some written comments as well.

17 Thank you.

18 MS. MONTEMAYOR: Thank you, Mr.
19 Schwebel.

20 Next we have Ms. Claudia Gonzalez-
21 Liendo.

22 MS. GONZALEZ-LIENDO: Thank you, Melisa.
23 I just want to apologize for the way I'm dressed. I
24 didn't realize I was going to have to stand in front
25 of a podium.

1 So good evening to everybody. I'm here
2 as a concerned citizen. I am fully in support of the
3 RMA. I think it's a great planning tool for everybody
4 that lives around this area.

5 I do have some concerns, however, and
6 that's what I'm here to express. As a mother of a 26
7 year old that drives back and forth on Loop 20, and as
8 an aunt to many many nephews and nieces that drive
9 along Loop 20, I'm a little concerned -- as Mr.
10 Villarreal said, our traffic here has increased
11 tremendously, and I'm a little concerned for the
12 improvements of Loop 20 possibly converting into an
13 I-69, with respect to getting the commercial traffic
14 mixed up with the typical public traffic. So I'm here
15 in support of -- I'm curious, you mentioned earlier
16 that there are plans to -- for a outer loop study, so
17 I'm wondering and I am proposing if possibly maybe --
18 there is the possibility of maybe pushing the I-69
19 commercial traffic -- or not pushing the I-69
20 commercial traffic, but any plans for maybe pushing
21 the traffic that would be on I-69 to the outer loop,
22 and possibly bringing the outer loop forward, as far
23 as the planning is concerned, and getting that
24 traffic outside of Laredo, so that we don't get the
25 commercial traffic mixed up with the public non-

1 commercial traffic. That would be my first concern.

2 My second concern was as far as the
3 funding is concerned. I travel Loop 20 every day to
4 and from work, and I was wondering were there -- are
5 there any plans or is there any possibility that this
6 I-69/Loop 20 corridor would ever become a toll
7 facility.

8 So those are my two concerns at this
9 point. And I just wanted to share that with you guys,
10 and maybe -- if you could consider that and take that
11 into account as we're planning, and as the RMA is
12 created, maybe they can take that into consideration.

13 Thank you.

14 MS. MONTEMAYOR: Thank you.

15 Are there any other verbal comments that
16 anyone would like to express tonight? Jorge
17 Verduzco, please come up, sir.

18 MR. VERDUZCO: Good evening. My
19 solutes, congratulations to Melisa, the District
20 Director of Transportation for our hometown, and as
21 well as the public officials who work in harmony with
22 her, and with the public sector, of which I have
23 witnessed, and I have been enthusiastic about it.

24 I have been associated with the Texas
25 Alliance for I-69 for over 20 years, since its

1 founding, as a matter of fact. I was one of the
2 founders, and I still serve in a capacity. And one of
3 the things that we thought when we got together with
4 Laredo group was interesting is that we had to create
5 that partnership, the City, the County, and the
6 private sector. And Texas Alliance, how it's set up
7 structurally throughout the state, Laredo went ahead,
8 went forward and paid its membership for over 20 years
9 now. We divided the membership of this section of
10 Texas that we belong to, three parts, the City, the
11 County, and the private sector, and we have done so
12 for over 20 years. And it was the only segment of all
13 of the alliance that had that peculiar
14 characteristic. The only one in Texas that publicly
15 held in record, and I know the Judge knows, you know,
16 the Mayor and Carlos knows, they wrote the membership
17 checks. So for over 20 years, the three created one.

18 And we're getting closer. We see a lot
19 of dreams in here, and we need those dreams so my
20 grandchildren can grow and enjoy the profitability
21 that is going to be created now. And, personally,
22 more important, my son is a truck driver, my son is a
23 truck driver. So I pray a little extra prayer, not
24 only for our leadership in creating a better life for
25 our community, but for those who serve, the rubber on

1 the road. And every time I hear those trucks on the
2 highways, Gerry, it reminds me, yes, of the old NAFTA
3 days and Ross Perot, but he had it all mixed up, and
4 he has to come in here and realize that trucks is
5 money. They create jobs and they bring prosperity to
6 our -- to our region.

7 So the CRM is something that is an
8 addition will bring credit to our facilities and to
9 our region. But I can tell you that the only way it
10 has worked and worked well, compared to other places
11 in Texas, is because our region made one team composed
12 of the City, the County, and the private sector. So
13 all the bills we pay, we get the money, we divide by
14 three.

15 So let's keep on doing that, working as
16 one, and we will continue to be successful, and even
17 so more successful.

18 So thank you for what you've done, thank
19 you for what the citizens have done, because I know
20 that personally it touches me very deeply, and I'm
21 sure you have your reasons, too.

22 Thank you and good day.

23 MS. MONTEMAYOR: Thank you, Mr.
24 Verduzco. Any other comments here that anybody would
25 like to share with us tonight. If not, we will still

1 accept your written comments tonight. Your packet,
2 again, has a comment form. They must be received, as
3 you see here on the screen before five o'clock p.m.,
4 February the 13th, 2014, to be included in the public
5 hearing summary, and to insure complete and accurate
6 answers.

7 As a reminder, we will not reply here
8 tonight to your questions and comments. We will reply
9 formally, in writing, about -- within 10 days after
10 this February 13th deadline, when we receive your
11 comments. So either your verbal comments here
12 tonight, if you had a question or a comment that
13 requires a response, or the court reporter will
14 transcribe that, give it to us, and we will in turn
15 give you a written comment mailed back to your
16 address.

17 So with that, I will thank you all for
18 coming here tonight. Hope to see you soon. Drive
19 safe.

20
21 (The hearing was concluded at 6:56 p.m.)
22
23
24
25

TEXAS DEPARTMENT OF TRANSPORTATION
PUBLIC HEARING

WEBB COUNTY-CITY OF LAREDO
REGIONAL MOBILITY AUTHORITY PUBLIC HEARING

REPORTER'S CERTIFICATION
Taken on 2-4-14

I, GERALD SMITH, Certified Shorthand Reporter in and for the State of Texas, do hereby certify that the above and foregoing contains a true and correct transcription of the Public Hearing held on the 4th day of February, 2014.

Certified to by me this 11th day of February, 2014.

A handwritten signature in cursive script, reading "Gerald Smith", is written over a horizontal line.

GERALD SMITH, CSR #2305
Expiration Date: 12-31-15
Action Reporting, Firm #13
P. O. Box 4513
McAllen, Texas 78502
(956) 631-1024

SECTION 6

Written Comments And Responses To Verbal And Written Comments

Table 1: Webb Co.-Laredo RMA Public Hearing – Persons Making Verbal Comments.

Name and Affiliation:	Contact Information:
Webb County Judge Danny Valdez	1000 Houston St., Laredo, Texas 78040
Carlos Villarreal – Laredo City Manager	1110 Houston St., Laredo, Texas 78040
Gerry Schwebel – IBC Bank	P.O. Drawer 7359, Laredo, Texas 78042
Claudia Gonzalez-Liendo	101 Lake Superior, Laredo, Texas 78041
Jorge Verduzco – I-69 Alliance/IBC Bank	1200 San Bernardo Ave., Laredo, Texas 78040

February 20, 2014

The Honorable Danny Valdez
Webb County Judge
1000 Houston Street
Laredo, Texas 78040

Re: Response to Verbal Comments
Webb County-City of Laredo Regional Mobility Authority (RMA) Public Hearing

Dear Judge Valdez:

The City of Laredo and the TxDOT – Laredo District would like to thank you for your positive comments at the public hearing held February 4, 2014 concerning the formation of the Webb County-Laredo RMA. We appreciate your strong comments in support of the Webb County-Laredo RMA.

This has been a long-term cooperative effort between the Webb County, the City of Laredo and TxDOT. We are now entering a new phase where these efforts can start leading to actual, on-the-ground improvements in the transportation system in Webb County through the use of innovative, locally-based funding initiatives. This local funding initiative will leverage traditional state and federal funding in our community.

Please know that we will continue to be of assistance in the formation and operation of the Webb County-Laredo RMA as needed. Again, we thank you for your participation and interest in this much needed effort to improve our community.

Sincerely,



Melisa D. Montemayor
Laredo District Administrator

February 20, 2014

Mr. Carlos Villarreal
City Manager
City of Laredo
1110 Houston Street
Laredo, Texas 78040

Re: Response to Verbal Comments
Webb County-City of Laredo Regional Mobility Authority (RMA) Public Hearing

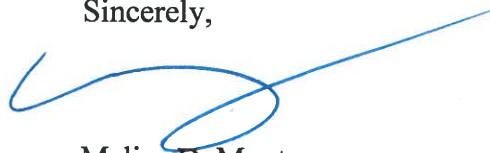
Dear Mr. Villarreal:

Webb County and the TxDOT – Laredo District would like to thank you for your positive comments at the public hearing held February 4, 2014 concerning the formation of the Webb County-Laredo RMA. We appreciate your strong comments in support of the Webb County-Laredo RMA.

This has been a long-term cooperative effort between the Webb County, the City of Laredo and TxDOT. We are now entering a new phase where these efforts can start leading to actual, on-the-ground improvements in the transportation system in Webb County through the use of innovative, locally-based funding initiatives. This local funding initiative will leverage traditional state and federal funding in our community.

Please know that we will continue to be of assistance in the formation and operation of the Webb County-Laredo RMA as needed. Again, we thank you for your participation and interest in this much needed effort to improve our community.

Sincerely,



Melisa D. Montemayor
Laredo District Administrator

February 20, 2014

Mr. Jorge Verduzco
Vice President
IBC Bank
P.O. Drawer 7359
Laredo, Texas 78042

Re: Response to Verbal Comments
Webb County-City of Laredo Regional Mobility Authority (RMA) Public Hearing

Dear Mr. Verduzco:

The City of Laredo, Webb County and the TxDOT – Laredo District would like to thank you for your positive comments at the public hearing held February 4, 2014 concerning the formation of the Webb County-Laredo RMA. We appreciate your strong comments in support of the Webb County-Laredo RMA.

This has been a long-term cooperative effort between the Webb County, the City of Laredo and TxDOT. We are now entering a new phase where these efforts can start leading to actual, on-the-ground improvements in the transportation system in Webb County through the use of innovative, locally-based funding initiatives. This local funding initiative will leverage traditional state and federal funding in our community. We recognize this cooperative effort will require the ongoing participation of the RMA, the Webb County, the City of Laredo, TxDOT and private sector stakeholders.

Again, we thank you for your participation and interest in this much needed effort to improve our community, as well as, your long-term work on the I-69 Alliance.

Sincerely,



Melisa D. Montemayor
Laredo District Administrator



February 20, 2014

Mr. Jerry Schwebel
Vice President
IBC Bank
P.O. Drawer 7359
Laredo, Texas 78042

Re: Response to Verbal Comments
Webb County-City of Laredo Regional Mobility Authority (RMA) Public Hearing

Dear Mr. Schwebel,

The City of Laredo, Webb County and the TxDOT – Laredo District would like to thank you for your positive comments at the public hearing held February 4, 2014 concerning the formation of the Webb County-Laredo RMA. We appreciate your strong comments in support of the Webb County-Laredo RMA.

This has been a long-term cooperative effort between the Webb County, the City of Laredo and TxDOT. We are now entering a new phase where these efforts can start leading to actual, on-the-ground improvements in the transportation system in Webb County through the use of innovative, locally-based funding initiatives. This local funding initiative will leverage traditional state and federal funding in our community. We recognize this cooperative effort will require the ongoing participation of the RMA, the Webb County, the City of Laredo, TxDOT and private sector stakeholders.

Again, we thank you for your participation and interest in this much needed effort to improve our community.

Sincerely,

Melisa D. Montemayor
Laredo District Administrator

OUR GOALS

MAINTAIN A SAFE SYSTEM • ADDRESS CONGESTION • CONNECT TEXAS COMMUNITIES • BEST IN CLASS STATE AGENCY

An Equal Opportunity Employer



February 20, 2014

Ms. Claudia Gonzalez-Liendo
101 Lake Superior
Laredo, Texas 78041

Re: Response to Verbal Comments
Webb County-City of Laredo Regional Mobility Authority (RMA) Public Hearing

Dear Ms. Gonzalez-Liendo,

In this letter, Webb County, the City of Laredo and the TxDOT – Laredo District would like to thank you for your comments you made at the February 4th public hearing concerning the formation of the Webb Co.-Laredo RMA. We appreciate your comments in support of the Webb Co.-Laredo RMA.

We take note of your concern for mixing personal vehicle traffic with commercial truck traffic on Loop 20. We would like to point out that the Webb County and City of Laredo officials who drafted the petition to the Texas Transportation Commission to form the Webb Co.-Laredo RMA identified the Loop 20/US 59/IH-69 route from US 59 to World Trade International Bridge IV as the primary project to be undertaken by the RMA. Please note that the US 59/IH-69 in Webb County outside of Loop 20, Cuatro Vientos Road Southern Extension, the Green Ranch Parkway, along with the Laredo Outer Loop are identified in the RMA Petition as additional project that will have RMA consideration.

To date, there have been no discussions on proposing direct tolling on roadways on Laredo roadways.

We would like to also point out that, as stated in the Hearing, the purpose of the February 4th Hearing was to complete the public outreach for the formation of the Webb Co.-Laredo RMA and that specific outreach for future RMA projects would be undertaken as each of those projects progressed into the engineering and environmental phases.

As you know this has been a long-term cooperative effort between the County, the City and TxDOT that is now entering a new phase when these efforts can start leading to actual, on-the-ground improvements in the transportation system in Webb County through the use of innovative, locally-based funding initiatives. This local funding initiative will leverage traditional state and federal funding in our community. We recognize that this cooperative effort will require the ongoing participation of the RMA, the County, the City, TxDOT and private sector stakeholders to develop the RMA sponsored projects.

Again, we thank you for your interest in this much needed effort to improve our community.

Sincerely,

Melisa D. Montemayor
Laredo District Administrator

OUR GOALS

MAINTAIN A SAFE SYSTEM • ADDRESS CONGESTION • CONNECT TEXAS COMMUNITIES • BEST IN CLASS STATE AGENCY

An Equal Opportunity Employer



Public Hearing Comments

Webb County, the City of Laredo and TxDOT would like to have your comments and questions on the upcoming Webb County - City of Laredo Regional Mobility Authority. You may leave this form with the Hearing staff at tonight's event or you may fold this form and mail it to the address on the reverse side; fax it to (956) 712-7401; or scan and e-mail it to Melisa.Montemayor@TxDOT.gov. **Comments must be received by 5:00 PM, February 13, 2014 to be included in the official Public Hearing Summary.**

1) What are your questions or concerns about the Webb County-City of Laredo Regional Mobility Authority (RMA) as it proceeds?

Letter Attached

2) Additional Comments:

Letter Attached

Comments By: Name:

Radcliffe Killam II

Address:

4320 University Blvd.

Laredo, Tx. 78041

Phone/e-mail:

956-724-7141

(Per Texas Transportation Code, §201.811(a)(5)): check each of the following boxes that apply to you:

☐ I am employed by TxDOT

☐ I do business with TxDOT

☒ I could benefit monetarily from the project or other item about which I am commenting

Comments must be received on or before 5:00 PM, February 13, 2014.

Leave this form with the project staff; mail to the address on the reverse side of this form; fax to (956) 712-7401; or e-mail to Melisa.Montemayor@TxDOT.gov.



4320 University Boulevard
P. O. Box 499
Laredo, Texas 78042

Phone 956.727-7141
Fax 956.724-2546

February 13, 2014

Ted Houghton, Chairman
Texas Transportation Commission
125 E. 11th Street
Austin, Texas 78701

RE: Public Hearing Comments regarding the formation of the Laredo-Webb Regional Mobility Authority

Dear Chairman Houghton and Transportation Commissioners:

As a major land owner and active Real Estate Development Company in the City of Laredo and Webb County, Killam Development, Ltd. (Killam) looks forward with positive anticipation to the Commission's plan to designate a Regional Mobility Authority (RMA) for Webb County. Killam understands from our discussions with the TxDOT Laredo District Director Melisa Montemayor that the initial focus of the RMA will be the upgrading and enhancement of Texas State Highway Loop 20 (Bob Bullock Loop) to full interstate standards. As you are aware, our unique position along the I-35 corridor and the growing border region places tremendous strains on our local transportation infrastructure. Killam believes that the improvement of this roadway will have a positive impact on the local quality of life.

Although this is a positive stride in the right direction, Killam offers the following concerns. After reviewing and discussing this project with the Laredo District office, Killam is aware that this project will require a significant amount of right of way which will have a direct impact on several real estate projects that Killam currently has planned. One project in particular is the Coves at Winfield, a 765 acre master planned, mixed use community directly abutting the proposed roadway project. Through this process, Killam has already expended additional capital in order to have our engineering team redesign a portion of the Coves project due to right of way needs that were not previously communicated.

This leads to Killam's second concern; Killam feels that the process for the formation of the RMA has not allowed for much participation and collaboration with us and other property owners along the Bob Bullock Loop. Killam feels that the City of Laredo and Webb County have not been open and sharing regarding what is being proposed. Killam would respectfully request that upon formation of the RMA, Killam be included in all discussions regarding the upgrading of this roadway in order to enable our development team to better coordinate Killam's planned real estate projects.

In addition, Killam's final concern involves the creation of the proposed Transportation Reinvestment Zone (TRZ) that is being considered to help finance some of the proposed capital improvements to the Bob Bullock Loop. In our discussions with the Laredo District office, the City, and the County, Killam has

proposed the use of a tax increment reinvestment zone (TIRZ) for the Coves Master Planned Community. This economic development mechanism is needed to help mitigate significant development capital costs related to infrastructure to render the land developable. Killam has proposed this mechanism as an alternative to the TRZ to allow for priority refunding of development capital costs, and for the partial funding of some of the roadway improvements through the future tax incremental revenues. The details would still need to be worked out once that zone is created. Killam understands that the financial model prepared by the TxDOT consultant did exclude the land where this development would occur in anticipation that the TIRZ would be created. Killam appreciates the Laredo District Director's willingness to collaborate with Killam on this project and hope to render an agreement that will ultimately be mutually beneficial to all parties. Killam would also like to state that Killam has a number of other real estate projects for which Killam may seek similar partial reimbursement for infrastructure costs. Killam respectfully requests that there be consideration of our and other developer's interests when discussions turn toward what areas of the City will be included in the proposed TRZ. Formation of a TRZ without due consideration and collaboration with Killam may negatively impact investment along this corridor which is needed by the proposed RMA to help finance this critical project.

Lastly, Killam respectfully requests that a more open dialogue be entertained by the City of Laredo and Webb County regarding the appointment of the RMA Board of Directors. To date, there has been no information regarding this issue. Given the powers and duties of the proposed RMA and its impact on current and future generations in our community, Killam believes that transparency in this board appointment process is critical.

Respectfully,



Radcliffe Killam II, Partner
Killam Development, Ltd.

February 20, 2014

Mr. Radcliffe Killam II
4320 University Boulevard
Laredo, Texas 78041

Re: Response to Verbal Comments
Webb County-City of Laredo Regional Mobility Authority (RMA) Public Hearing

Dear Mr. Killam:

The City of Laredo and the TxDOT – Laredo District would like to thank you for your positive comments at the public hearing held February 4, 2014 concerning the formation of the Webb County-Laredo RMA. We appreciate your strong comments in support of the Webb County-Laredo RMA.

This has been a long-term cooperative effort between the Webb County, the City of Laredo and TxDOT. We are now entering a new phase where these efforts can start leading to actual, on-the-ground improvements in the transportation system in Webb County through the use of innovative, locally-based funding initiatives. This local funding initiative will leverage traditional state and federal funding in our community. We recognize this cooperative effort will require the ongoing participation of the RMA, the Webb County, the City of Laredo, TxDOT and private sector stakeholders.

We take note of your land and business location along the route of the proposed RMA's primary project and the potential impacts to your interests. We thank you for your interest in the appointment of the RMA board as well as this much needed effort to improve our community.

Sincerely,



Melisa D. Montemayor
Laredo District Administrator



Public Hearing Comments

Webb County, the City of Laredo and TxDOT would like to have your comments and questions on the upcoming Webb County - City of Laredo Regional Mobility Authority. You may leave this form with the Hearing staff at tonight's event or you may fold this form and mail it to the address on the reverse side; fax it to (956) 712-7401; or scan and e-mail it to Melisa.Montemayor@TxDOT.gov. **Comments must be received by 5:00 PM, February 13, 2014 to be included in the official Public Hearing Summary.**

1) What are your questions or concerns about the Webb County-City of Laredo Regional Mobility Authority (RMA) as it proceeds?

Because this is such an important initiative for our city, it is paramount that both the government entities (County of Webb, City of Laredo, and TexDot) and the private business sector work jointly as one team throughout the entire process. I believe it was mentioned in your presentation that there was a need for "innovative funding" for this project, and I can attest that business leaders and owners have a strong reputation when it comes to "creative thinking" for finding new revenue sources. I hope that the City and the County select some of our strong business leaders in our community that have the "passion and drive" to serve on this board and help guide this project to a successful completion.

2) Additional Comments: I would recommend that communication improve as we move forward. I was very concerned that notice of the public hearing was not thoroughly and effectively sent out. An email from the City was sent to the Chamber of Commerce at 9:19 A.M. that same morning. The Chamber in turn distributed the email to all Board Members, so I personally first learned of the hearing date and time only hours prior to the meeting time. I have no idea if all the other business organizations were notified, i.e., Logistic & Manufacturing Association, Lic. U.S. Customhouse Brokers Assoc., Assoc. of Laredo Forwarding Agents, and members of the Transportation Industry. In my opinion, members from all of these organizations should have been present at this hearing and I only saw Rolando Ortiz from the Laredo Development Foundation.

Comments By: Name: Mario A. Pena
Address: 8816 Justice Drive
Laredo, TX 78045
Phone/e-mail: 956-236-9566 mariopena@ibc.com or mpena002@stx.rr.com

(Per Texas Transportation Code, §201.811(a)(5)): check each of the following boxes that apply to you:

- ☐ I am employed by TxDOT
- ☐ I do business with TxDOT
- ☐ I could benefit monetarily from the project or other item about which I am commenting

Comments must be received on or before 5:00 PM, February 13, 2014.

Leave this form with the project staff; mail to the address on the reverse side of this form; fax to (956) 712-7401; or e-mail to Melisa.Montemayor@TxDOT.gov.

*Place
Stamp
Here*

Texas Department of Transportation – Laredo District
Melisa D. Montemayor
1817 Bob Bullock Loop
Laredo TX 78043

February 20, 2014

Mr. Mario A. Pena
8816 Justice Drive
Laredo, Texas 78045

Re: Response to Verbal Comments
Webb County-City of Laredo Regional Mobility Authority (RMA) Public Hearing

Dear Mr. Pena:

The City of Laredo and the TxDOT – Laredo District would like to thank you for your positive comments at the public hearing held February 4, 2014 concerning the formation of the Webb County-Laredo RMA. We appreciate your strong comments in support of the Webb County-Laredo RMA.

This has been a long-term cooperative effort between the Webb County, the City of Laredo and TxDOT. We are now entering a new phase where these efforts can start leading to actual, on-the-ground improvements in the transportation system in Webb County through the use of innovative, locally-based funding initiatives. This local funding initiative will leverage traditional state and federal funding in our community. We recognize this cooperative effort will require the ongoing participation of the RMA, the Webb County, the City of Laredo, TxDOT and private sector stakeholders.

We take note of your comment on the need for effective notifications for public outreach events and will continue to strive to improve those efforts. Again, we thank you for your participation and interest in this much needed effort to improve our community, as well as, your long-term work on the I-69 Alliance.

Sincerely,



Melisa D. Montemayor
Laredo District Administrator